

O.D.O.T. DISTRICT 2 SURVEY OFFICE (USE ONLY)

PERSONNEL

REFERENCE NO. 5

SHEET 6 OF 22

NOTES RHOADES

DATE 4/16/13

ROUTE SR 300

H.C. CODER

WEATHER RAIN

COUNTY SANDUSKY

R.C. RHOADES

TEMP. 51°

TOWNSHIP MADISON

SECTION 25

T 5 N R 13 E

TYPE MONUMENT PK/WASHER

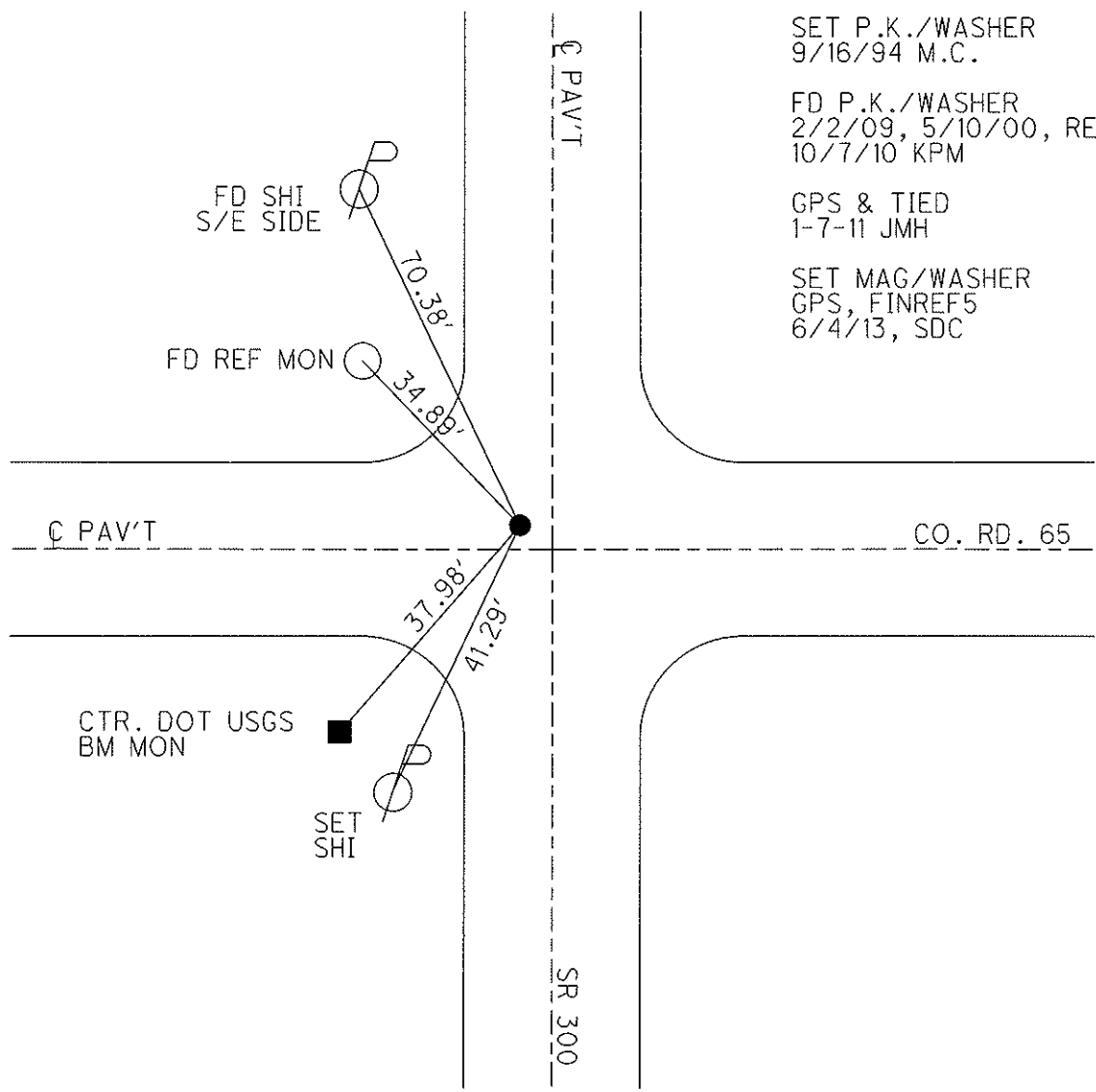
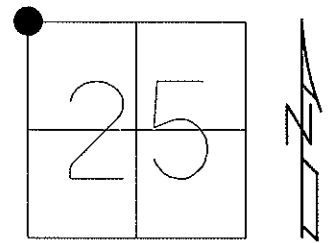
ON SURFACE - ~~BELOW~~ ON         

LEFT - ~~Q PAV'T~~ - RIGHT 2.4'

         TO          EDGE PAVEMENT

S.L.M. 106+07.24

Grid: Northing: 621645.757 Easting: 1743248.120



SET P.K./WASHER  
9/16/94 M.C.

FD P.K./WASHER  
2/2/09, 5/10/00, RESUF.  
10/7/10 KPM

GPS & TIED  
1-7-11 JMH

SET MAG/WASHER  
GPS, FINREF5  
6/4/13, SDC

O.D.O.T. DISTRICT 2 SURVEY OFFICE

PERSONNEL \_\_\_\_\_

REFERENCE NO. 5

SHEET 5 OF 17

NOTES MOSER

DATE 10-7-10

ROUTE SR 300

H.C. HARBAUGH

WEATHER CLOUDY

COUNTY SANDUSKY

R.C. FINGER

TEMP. 75°

TOWNSHIP MADISON

SECTION 23-24-25-26

T 5 N R 13 E

TYPE MONUMENT PK/WASHER

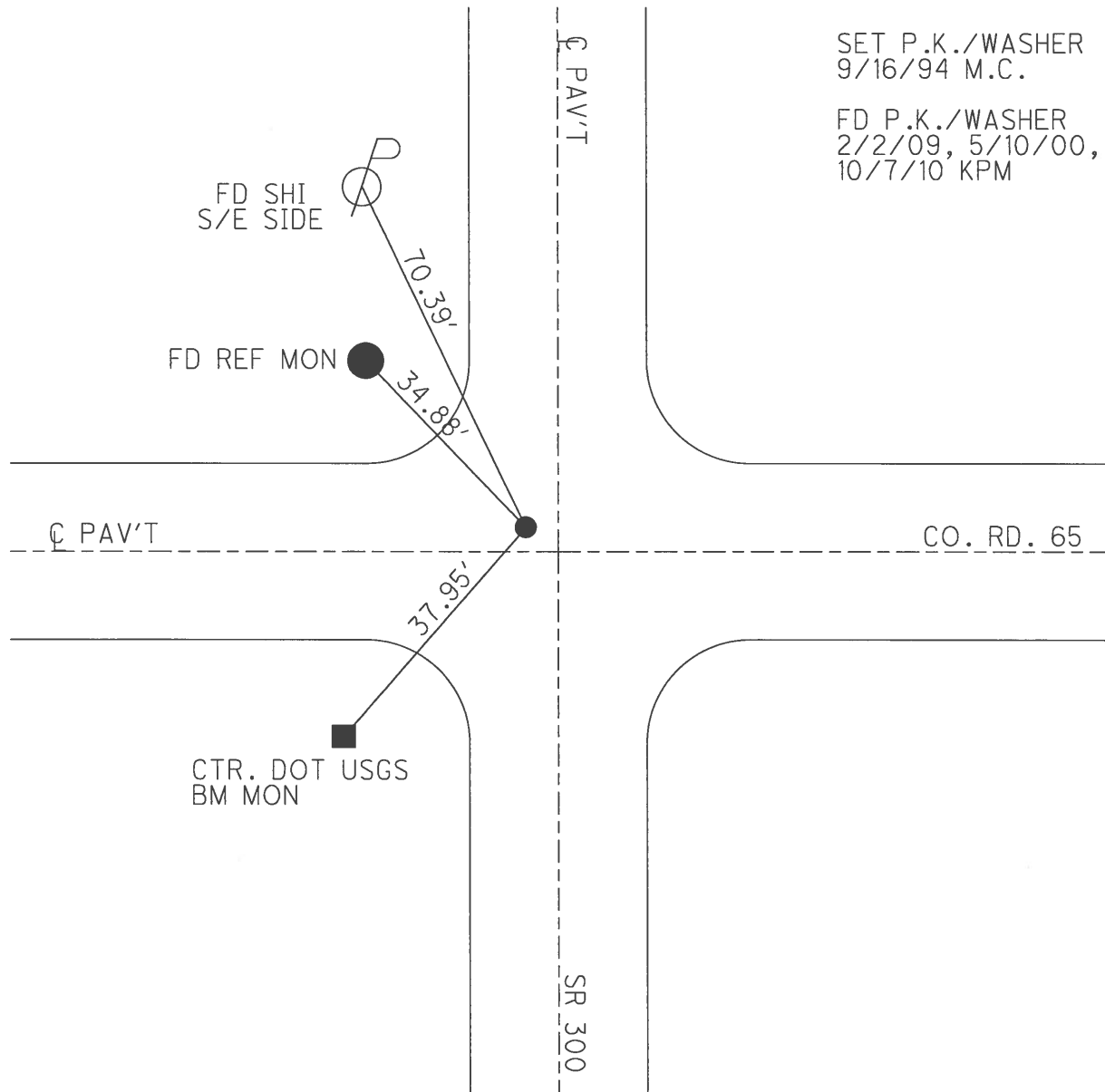
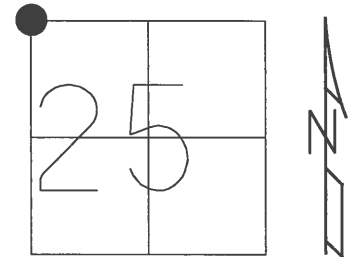
ON SURFACE - ~~BELOW~~ ON

LEFT - C PAV'T - ~~RIGHT~~ 2' LT.

TO EDGE PAVEMENT

S.L.M. 106+07.24

Grid: Northing: \_\_\_\_\_ Easting: \_\_\_\_\_



SET P.K./WASHER  
9/16/94 M.C.

FD P.K./WASHER  
2/2/09, 5/10/00, RESUF.  
10/7/10 KPM

County Sandusky S.R. 300

Date 28 Feb. 85

Township Madison

Weather Cool

Section 23-24-25-26

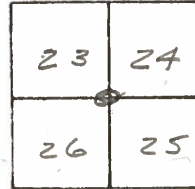
Temp. 36°

T N, R E

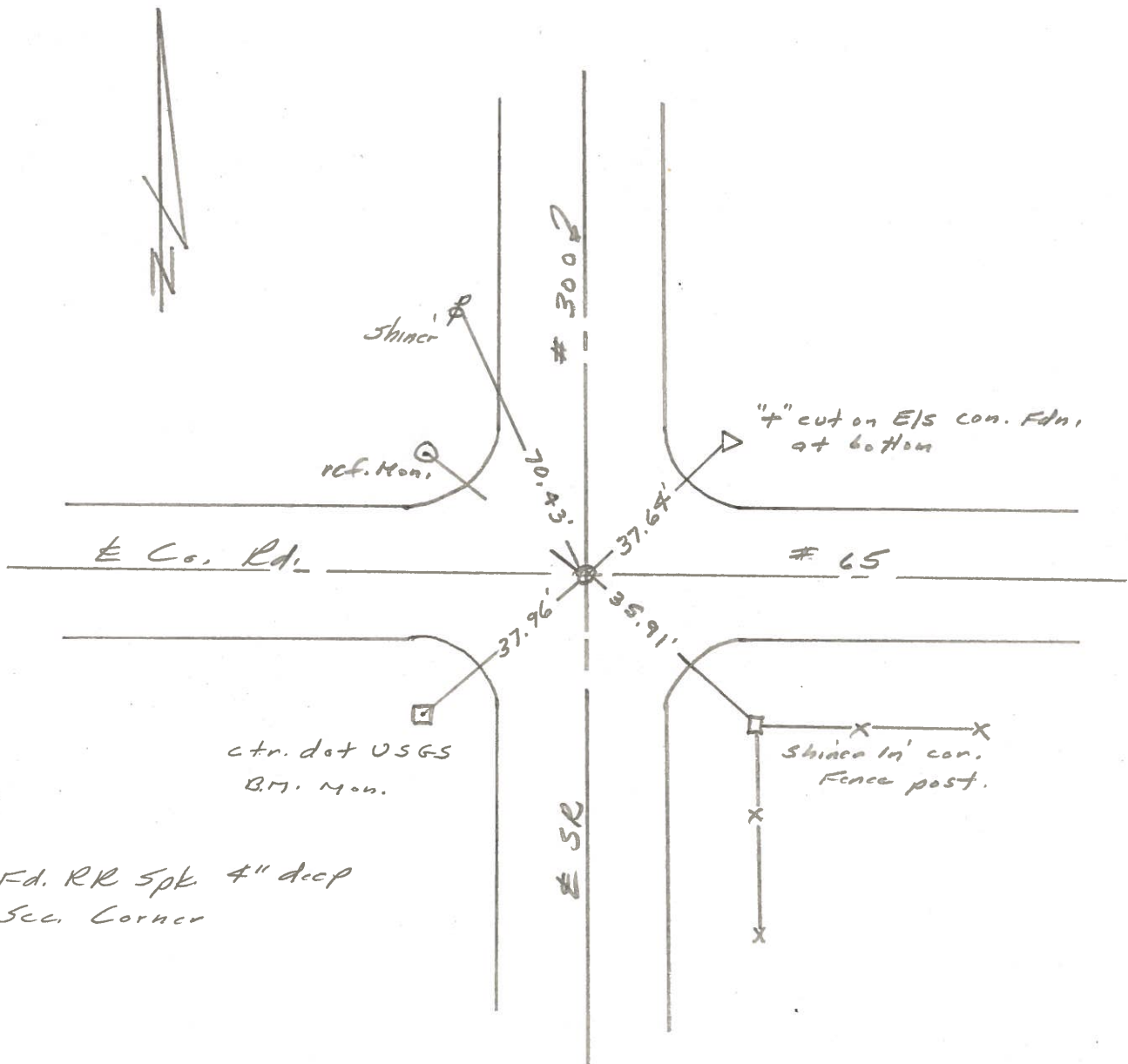
Personnel L. Stone

J. Householder

5



REF. No. 5



PERSONNEL TITLE PERSONNEL TITLE

Cronin  
Ash  
Ripple

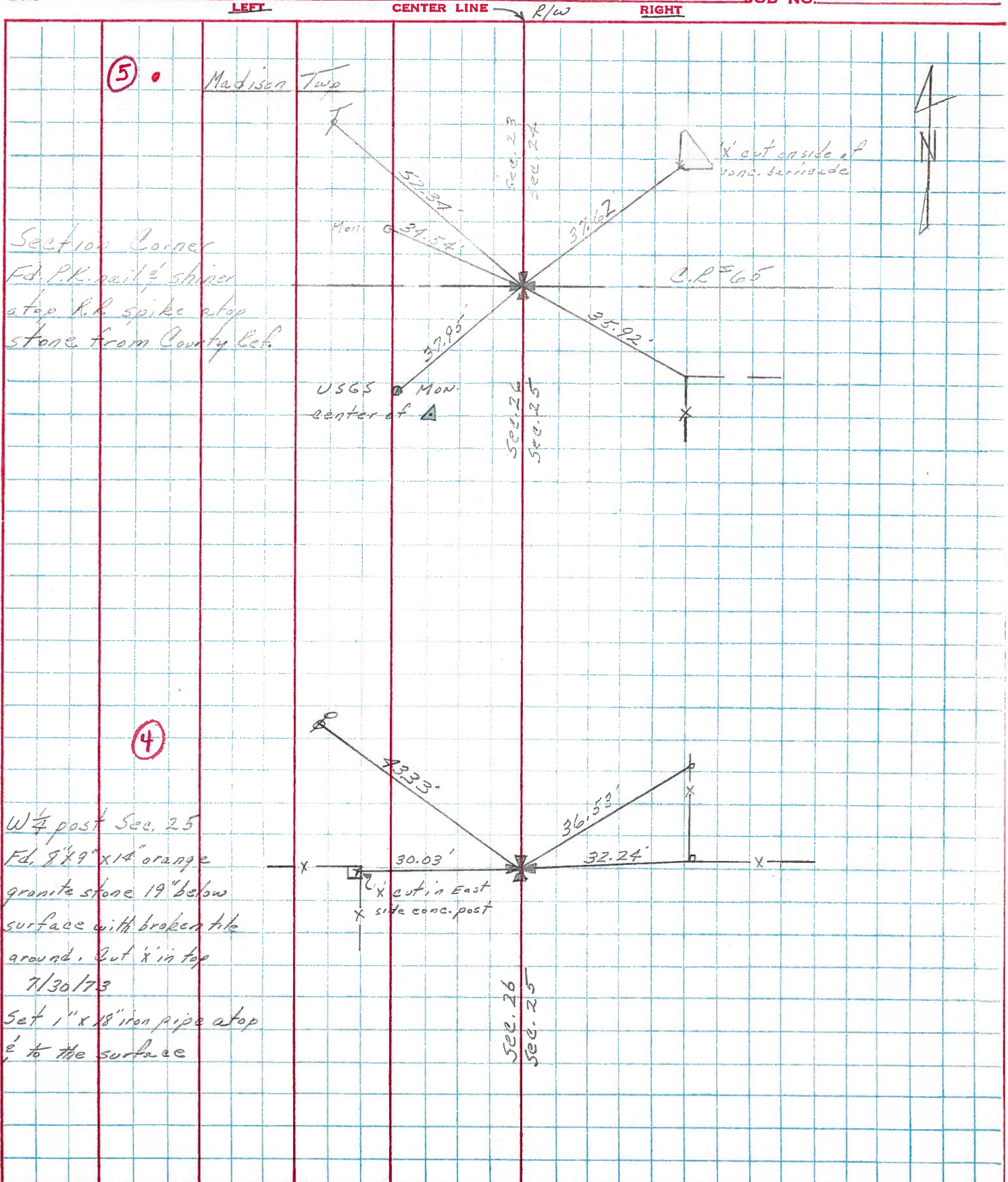
COUNTY Sandusky DATE Drawn 11/5/73

S. R. # 300 WEATHER

SEC. U.S. #6 to U.S. #20 TEMP.

DESCRIPTION Ties for Control Points

JOB NO.





PERSONNEL	TITLE	PERSONNEL	TITLE	COUNTY	DATE
Schneider		Potts		Sandusky	4-17-68
Mosser				S. R. 300	WEATHER cloudy
Barbour				SEC. 0.00	TEMP. 65°
Redding					

DESCRIPTION Ties for Control Points JOB NO. \_\_\_\_\_

