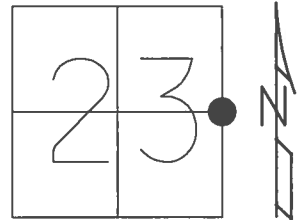


O.D.O.T. DISTRICT 2 SURVEY OFFICE (USE ONLY)

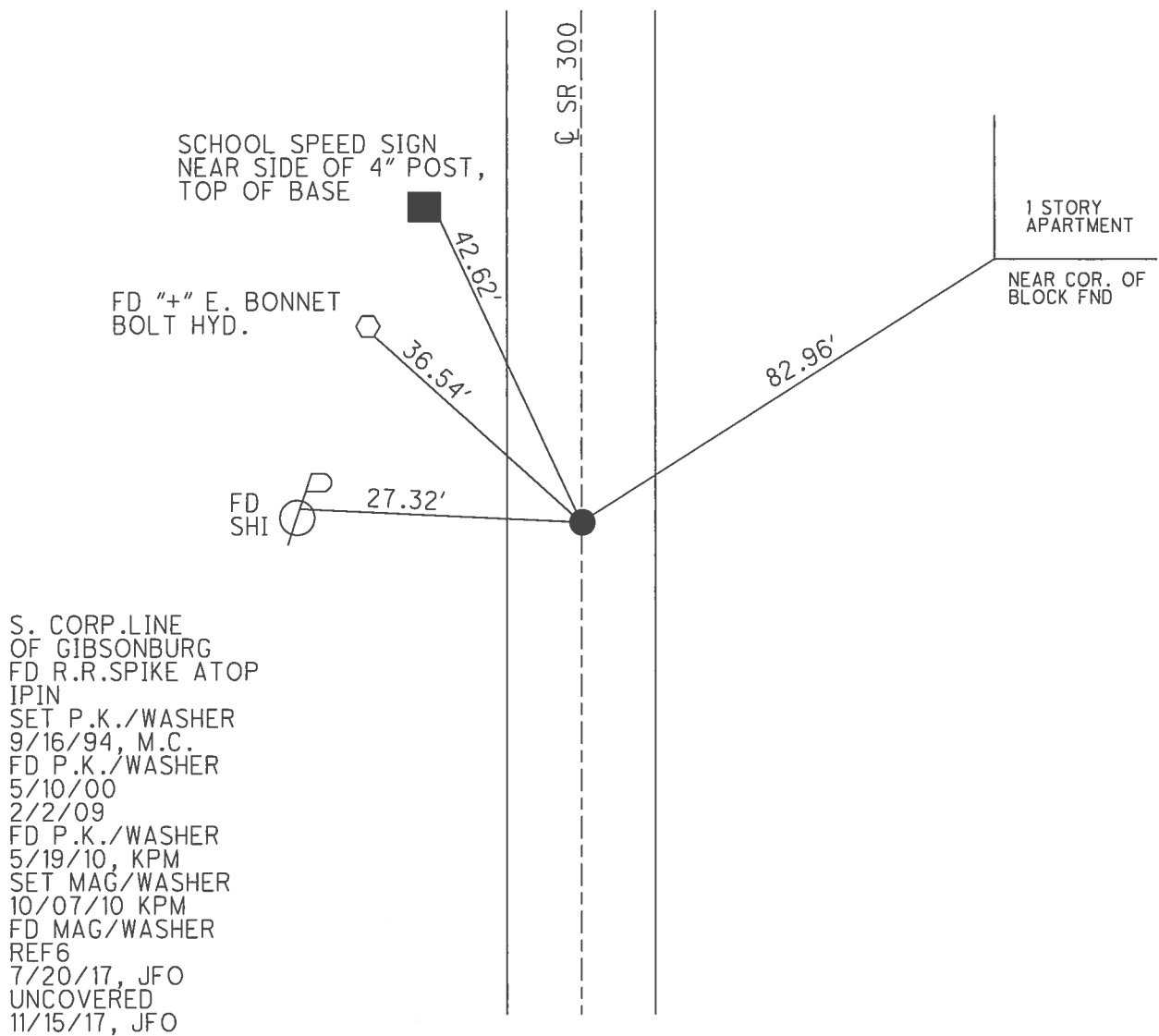
PERSONNEL \_\_\_\_\_ REFERENCE NO. 6 SHEET 9 OF 22

NOTES RHOADES DATE 7/20/17 ROUTE SR 300  
 H.C. O'DONNELL WEATHER SUNNY COUNTY SANDUSKY  
 R.C. POORE TEMP. 78° TOWNSHIP MADISON  
 \_\_\_\_\_ SECTION 23  
 \_\_\_\_\_ T 5 N R 13 E

TYPE MONUMENT \_\_\_\_\_ MAG/WASHER  
 ON SURFACE - ~~BELOW~~ ON \_\_\_\_\_  
 LEFT - ☉ PAV'T - RIGHT ON \_\_\_\_\_  
10.2 TO LT EDGE PAVEMENT  
 S.L.M. 132+46.87



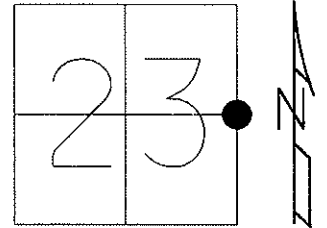
GRID: NORTHING: 624282.715 EASTING: 1743365.473



O.D.O.T. DISTRICT 2 SURVEY OFFICE (USE ONLY)

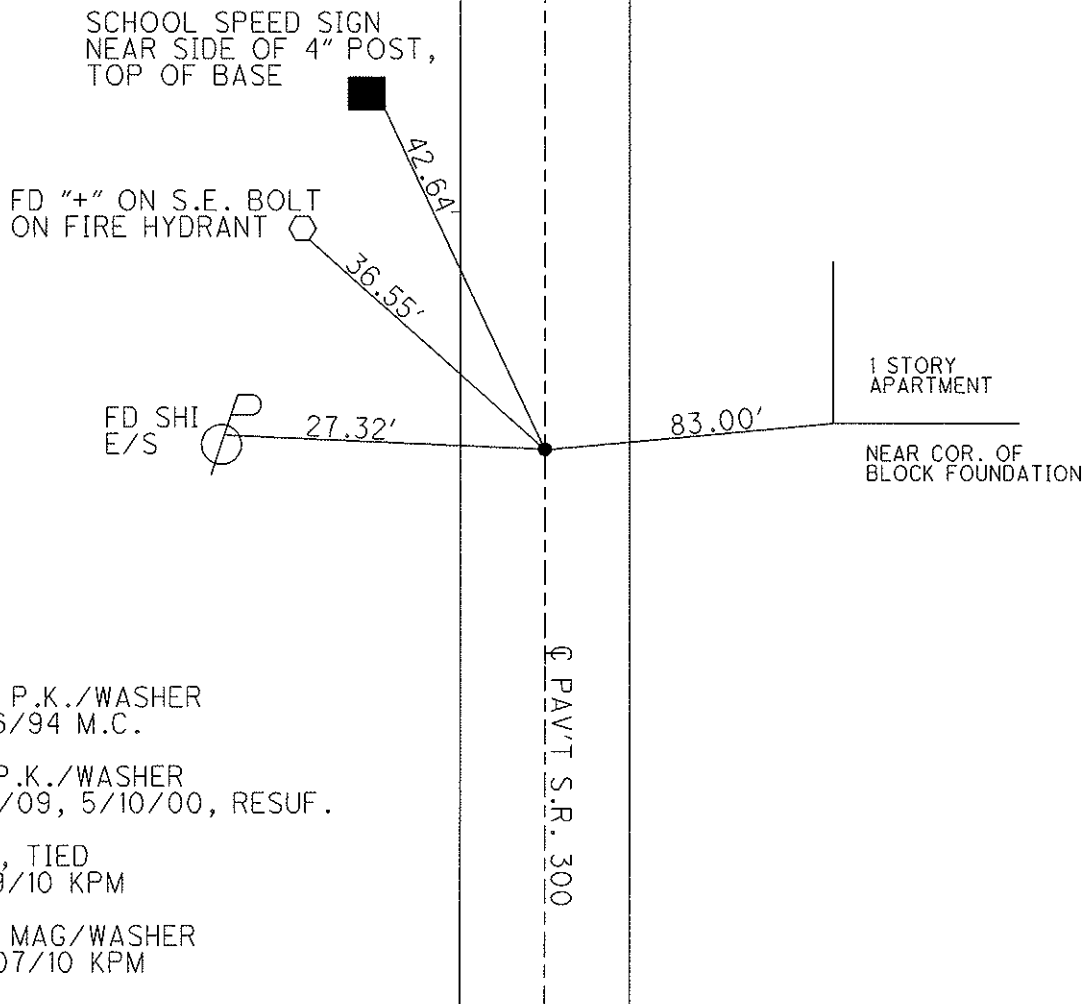
PERSONNEL \_\_\_\_\_ REFERENCE NO. 6 SHEET 9 OF 22  
 NOTES MOSER DATE 5/19/10 ROUTE SR 300  
 H.C. GOLDBERG WEATHER SUNNY COUNTY SANDUSKY  
 R.C. HARBAUGH TEMP. 75° TOWNSHIP MADISON  
 \_\_\_\_\_ SECTION 23  
 \_\_\_\_\_ T 5 N R 13 E

TYPE MONUMENT P.K./WASHER  
 ON SURFACE - ~~BELOW~~ ON  
 LEFT - ☉ PAV'T - RIGHT ON  
10.2 TO LT EDGE PAVEMENT  
 S.L.M. 137+27



Grid: Northing: 624282.795 Easting: 1743365.362

W 1/4 POST SEC 24 S. CORP  
 LINE OF GIBSONBURG. FD R.R.SPK.  
 ATOP IRON PIN FROM CO.REF.



PERSONNEL TITLE PERSONNEL TITLE

Cronin  
Ash  
Ripple

COUNTY Sandusky

DATE Drawn 11/5/73

S. R. #300

WEATHER

SEC. U.S. #6 to U.S. #20

TEMP.

DESCRIPTION

Ties for Control Points

JOB NO.

LEFT

CENTER LINE

R/W

RIGHT

⑦

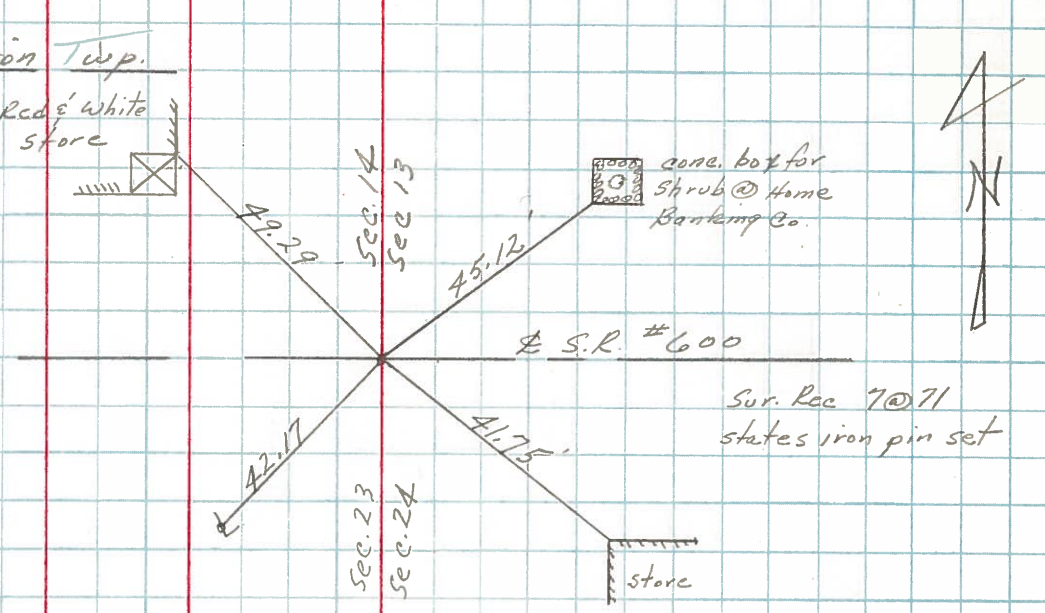
Madison Twp.

Red & white store

Section Corner

Inters. S.R. #300 & S.R. #600

Fd. punched bolt with washer - County Records state Mon. Box by state

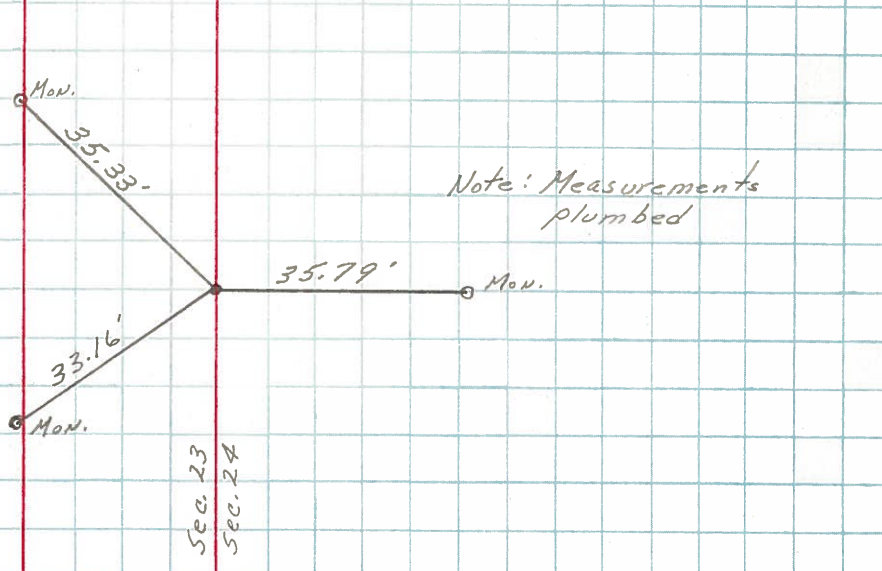


⑥

W 1/4 post Sec. 24

South Corp. Line of Gibsonburg

Fd. R.R. spike atop iron rod from County Ref.



PERSONNEL	TITLE	PERSONNEL	TITLE	COUNTY	DATE
Schneider		Potts		Sandusky	4-17-68
Mosser				S. R. 300	WEATHER Cloudy
Barbour				SEC. 0.00	TEMP. 65°
Redding					

DESCRIPTION Ties for Control Points JOB NO. \_\_\_\_\_

