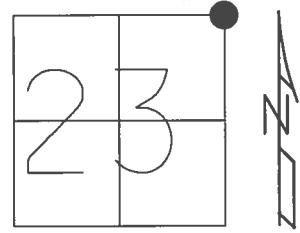


O.D.O.T. DISTRICT 2 SURVEY OFFICE (USE ONLY)

PERSONNEL _____ REFERENCE NO. 7 SHEET 10 OF 22

NOTES RHOADES _____ DATE 7/20/17 _____ ROUTE SR 300
 H.C. O'DONNELL _____ WEATHER SUNNY _____ COUNTY SANDUSKY
 R.C. POORE _____ TEMP. 78° _____ TOWNSHIP MADISON
 _____ SECTION 23
 _____ T 5 N R 13 E

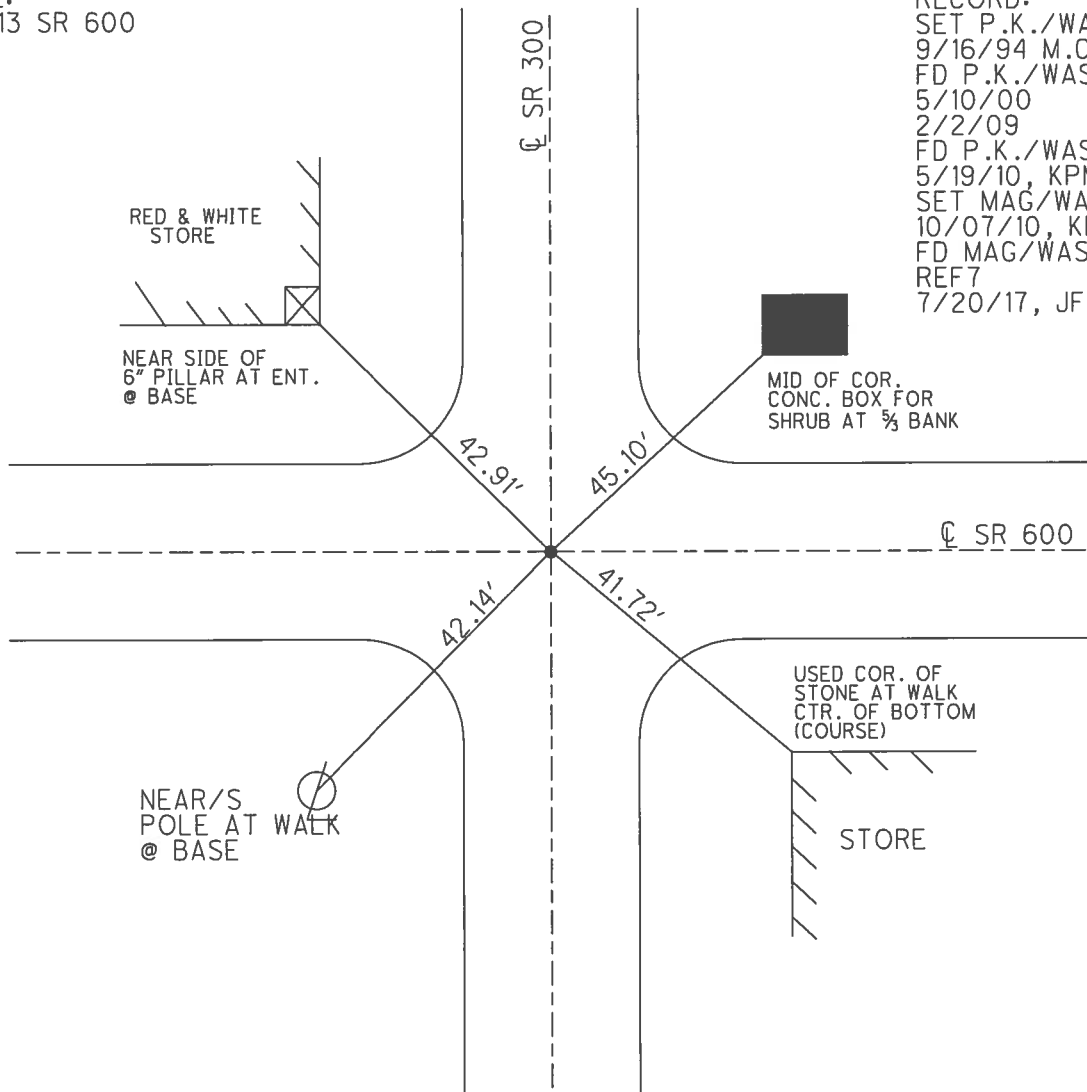
TYPE MONUMENT MAG/WASHER
 ON SURFACE - ~~BELOW~~ ON _____
 LEFT - ☉ PAV'T - RIGHT ON _____
10.2 TO LT EDGE PAVEMENT
 S.L.M. 158+92.8



GRID: NORTHING: 626926.206 EASTING: 1743480.517

NOTE:
REF 13 SR 600

RECORD:
 SET P.K./WASHER
 9/16/94 M.C.
 FD P.K./WASHER
 5/10/00
 2/2/09
 FD P.K./WASHER
 5/19/10, KPM
 SET MAG/WASHER
 10/07/10, KPM
 FD MAG/WASHER
 REF7
 7/20/17, JFO



O.D.O.T. DISTRICT 2 SURVEY OFFICE (USE ONLY)

PERSONNEL

REFERENCE NO. 7

SHEET 10 OF 22

NOTES MOSE

DATE 5/20/10

ROUTE SR 300

H.C. GOLDBERG

WEATHER CLOUDY

COUNTY SANDUSKY

R.C. HARBAUGH

TEMP. 65°

TOWNSHIP MADISON

SECTION 23

T 5 N R 13 E

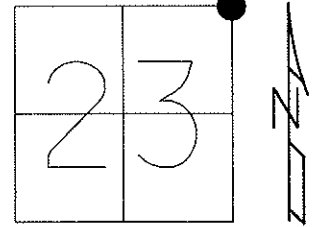
TYPE MONUMENT P.K./WASHER

ON SURFACE - ~~BELOW~~ ON

LEFT - Q PAV'T - RIGHT ON

10.2 TO LT EDGE PAVEMENT

S.L.M. 158+92.8



Grid: Northing: 626926.173 Easting: 1743480.457

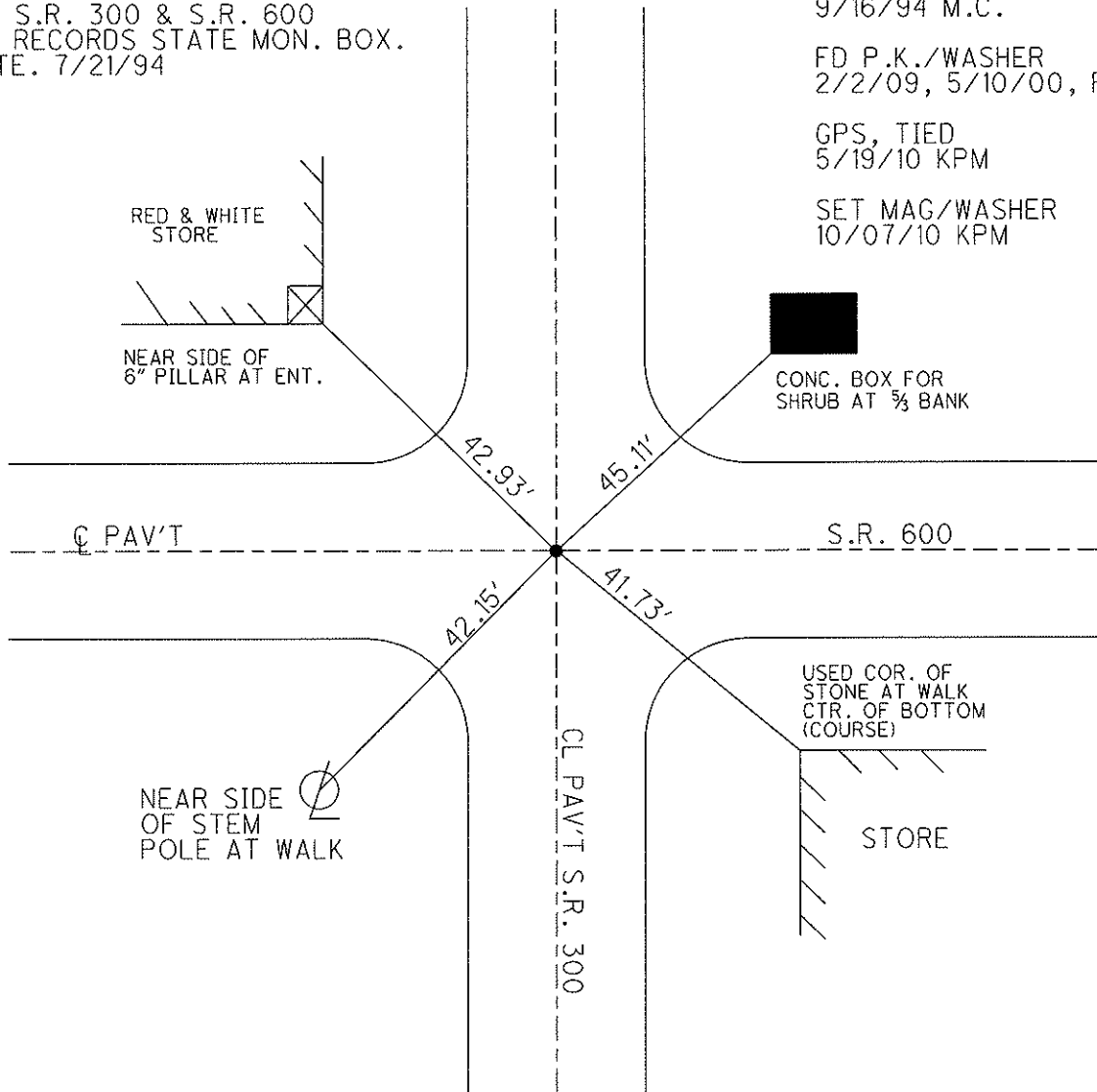
NOTE: SECTION CORNER
INTERS. S.R. 300 & S.R. 600
COUNTY RECORDS STATE MON. BOX.
BY STATE. 7/21/94

SET P.K./WASHER
9/16/94 M.C.

FD P.K./WASHER
2/2/09, 5/10/00, RESUF.

GPS, TIED
5/19/10 KPM

SET MAG/WASHER
10/07/10 KPM



NEAR SIDE OF STEM
POLE AT WALK

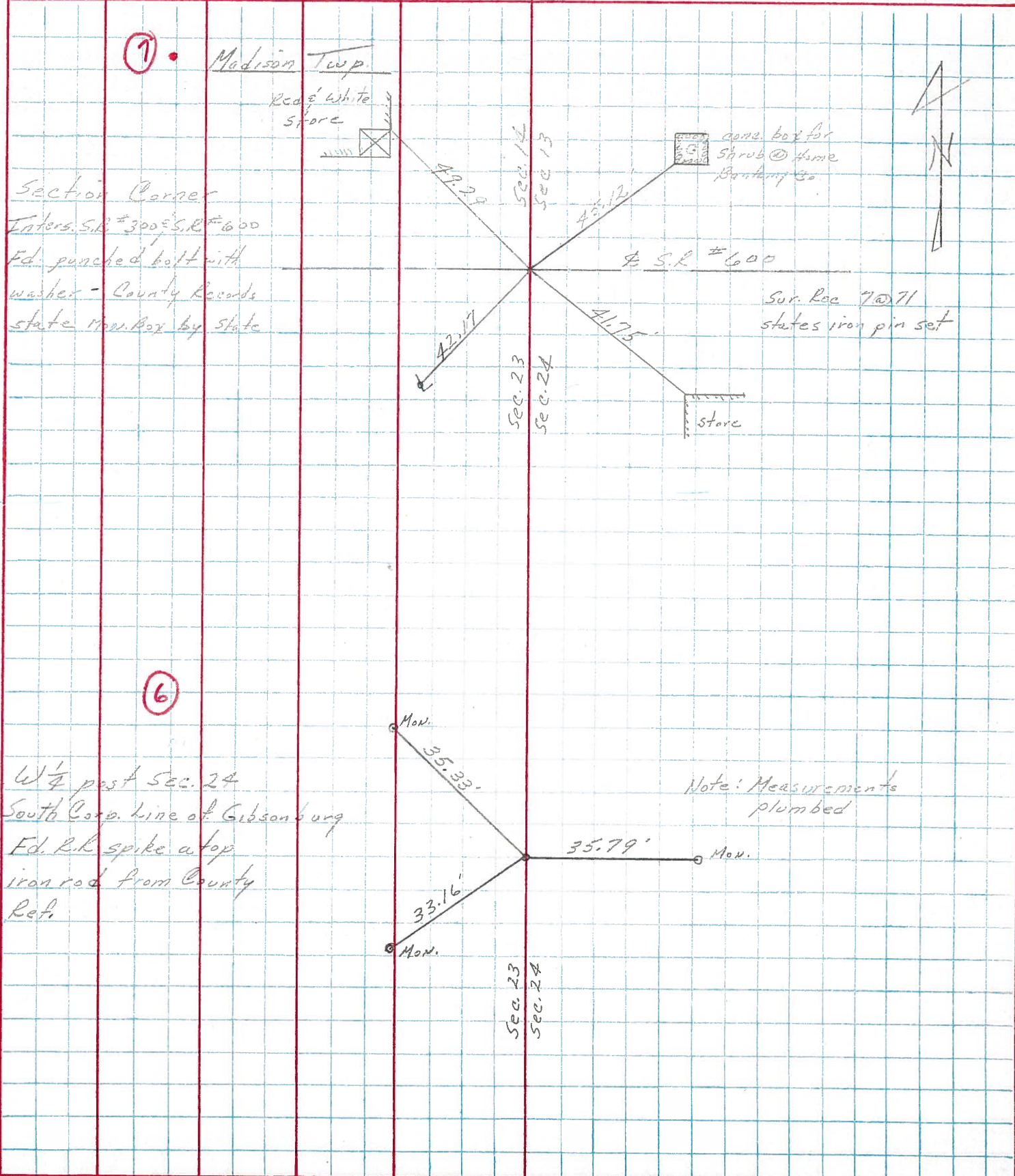
USED COR. OF
STONE AT WALK
CTR. OF BOTTOM
(COURSE)

STORE

PERSONNEL	TITLE	PERSONNEL	TITLE
Cronin			
Ash			
Ripple			

COUNTY Sandusky DATE Drawn 11/5/73
 S. R. # 300 WEATHER _____
 SEC. U.S. #6 to U.S. #20 TEMP. _____

DESCRIPTION Ties for Control Points JOB NO. _____



①

Madison Twp.

Red & White store

Section Corner
 Inters. S.R. #300 & S.R. #600
 Ed. punched bolt with washer - County Records state Mon. Box by State

corn box for Shrub @ Home Bankery Co.

S.R. #600

Sur. Rec 7@71 states iron pin set

store

⑥

W 1/4 past Sec. 24
 South Corp. line of Gibsonburg
 Ed. R.K. spike atop iron rod from County Ref.

Note: Measurements plumbed

Mon. 35.33'

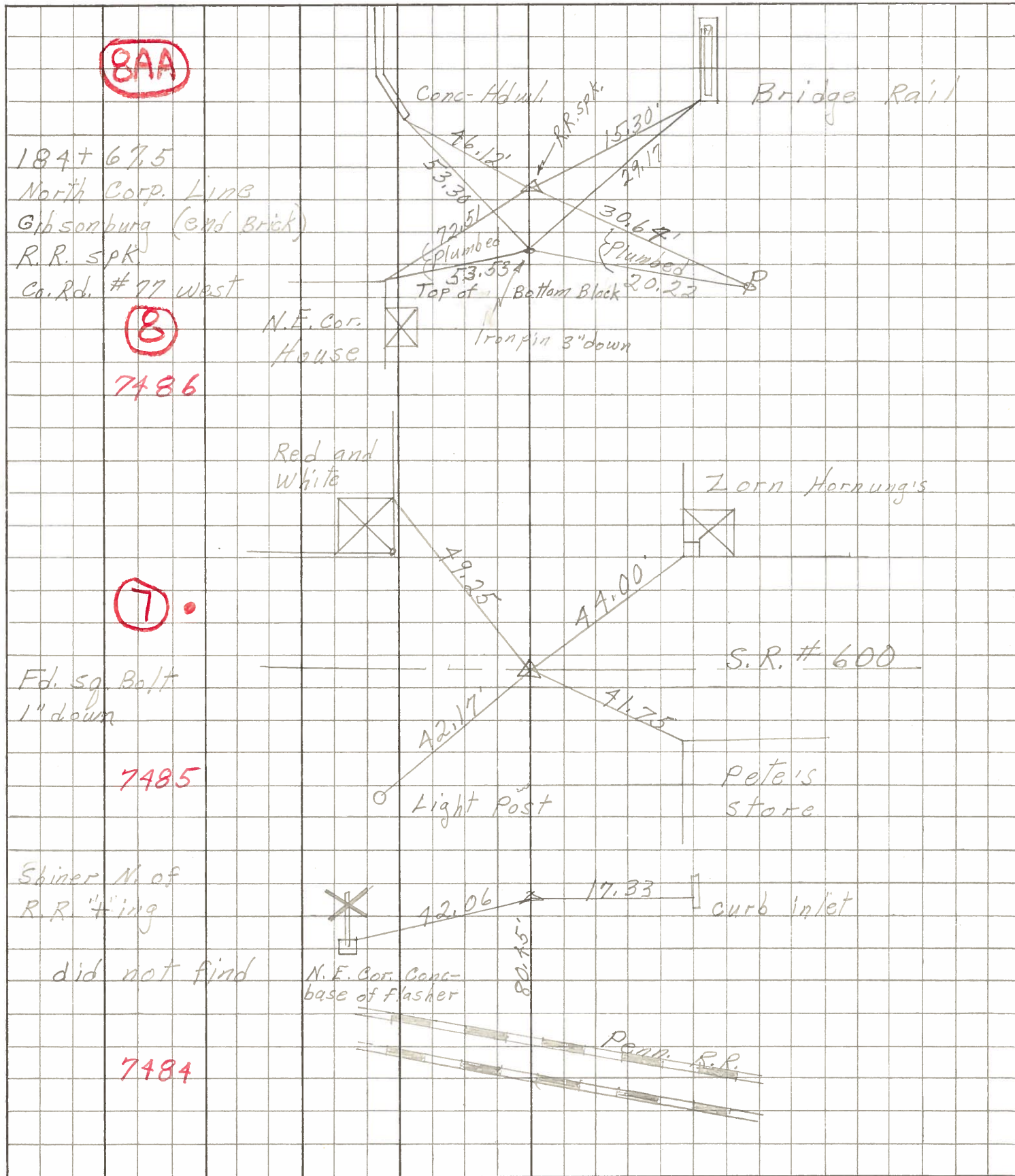
Mon. 33.16'

35.79' Mon.

Sec. 23
Sec. 24

PERSONNEL	TITLE	PERSONNEL	TITLE	COUNTY	DATE	WEATHER	TEMP.
Schneider		Potts		sandusky	4-17-68	Cloudy	65°
Mosser				S. R. 300			
Barbour				SEC. U.S. #6 to U.S. #20			
Redding							

DESCRIPTION Ties for Control Poles JOB NO. _____



PERSONNEL TITLE PERSONNEL TITLE

COUNTY SANDUSKY

DATE MARCH 21, 1950

MORRISON
Swarden
Holcombe.

S. R. 300

WEATHER Rain & Foggy

SEC. _____

TEMP. +45°

DESCRIPTION GIBSONBURG STREETS (MAIN ST.)

JOB NO. _____

LEFT

CENTER LINE

RIGHT

P.I. 184+67.5 iron pipe (Found)

N. Corp. LINE & End of Bridge.

MADISON ST. I.
P.I. 158+39.25
 $\Delta = 0^\circ - 32' Lt.$

Found iron bolt 1' down in 6" pipe.

S.R. 300 & 600 intersection
12/29/50
Morrison
& CREW

7

S.R. 600-E.

NE. Cor Conc.
Base. Flasher

Set Shiner on line N. Side of RR.
Curb Intet.

Backed Stationing from 184+67.5
South to Madison St. Turned Δ of $0^\circ - 32' Lt.$
as of old notes, and produced line to
Shiner Set N. of R.R. King.

