

O.D.O.T. DISTRICT 2 SURVEY OFFICE (USE ONLY)

PERSONNEL

REFERENCE NO. 8

SHEET 11 OF 22

NOTES RHOADES DATE 7/20/22  
 H.C. RHOADES WEATHER WINDY  
 R.C. WHITAKER TEMP. 86°

ROUTE SR 300  
 COUNTY SANDUSKY  
 TOWNSHIP MADISON  
 SECTION 14  
 T 5 N R 13 E

DWG BY WHITAKER PID PVTRN

TYPE MONUMENT MAG/WASHER

ON SURFACE - BELOW ON

OFFSET  $\odot$  PAVEMENT ON LT : RT

11.5' TO LT EDGE PAVEMENT

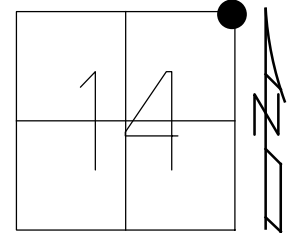
STATION: 185+20.73

HORZ.DATUM: NAD83 (2011)

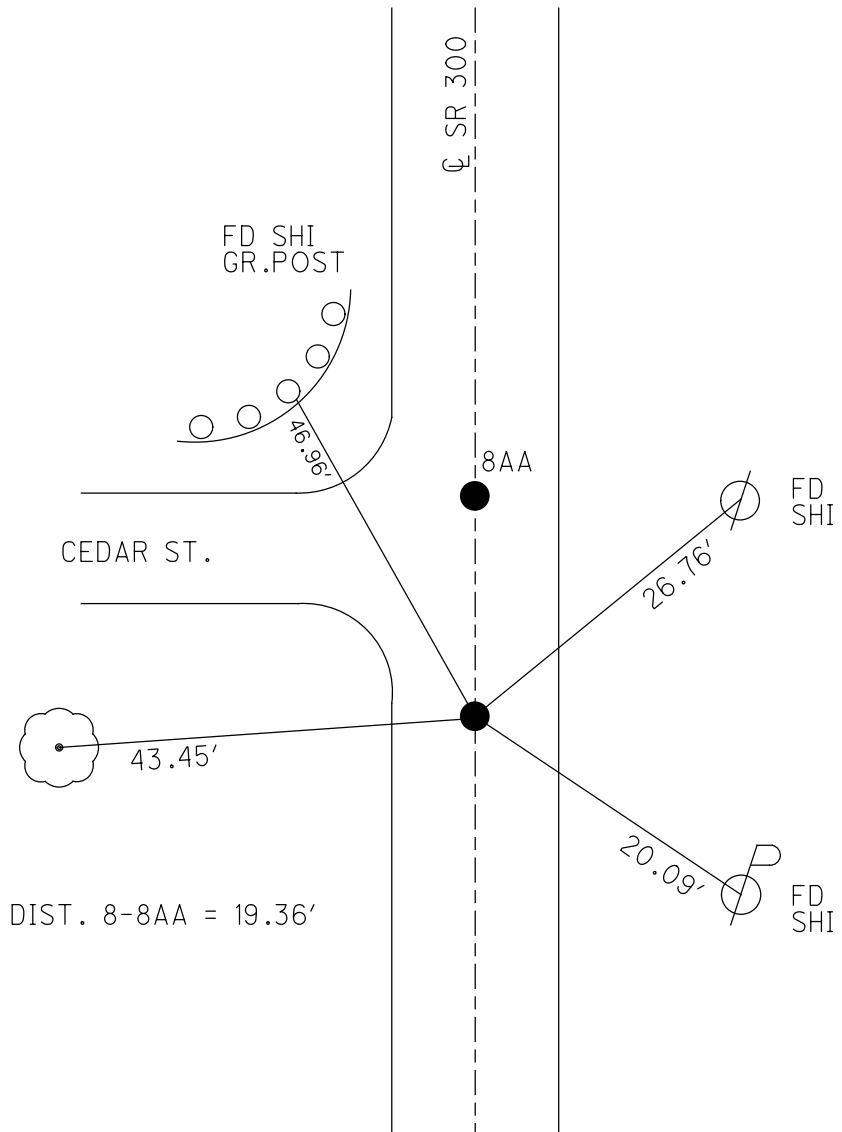
GEOID: 2012A

GRID: NORTHING: 629552.565

EASTING: 1743566.538



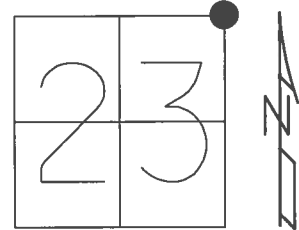
RECORD:  
 FD IPIPE  
 3" DOWN  
 END OF BRICK SEC.  
 1973  
 SET P.K./WASHER  
 9/16/94, M.C.  
 FD P.K./WASHER  
 5/10/00  
 2/2/09  
 FD P.K./WASHER  
 5/19/10, KPM  
 SET MAG/WASHER  
 10/07/10, KPM  
 FD MAG/WASHER  
 REF8  
 7/20/17, JFO  
 11/15/17, JFO  
 FD MAG/WASHER  
 REF8  
 4/22/21, DSA  
 SET MAG/WASHER  
 REF8  
 7/20/22, JMR



O.D.O.T. DISTRICT 2 SURVEY OFFICE (USE ONLY)

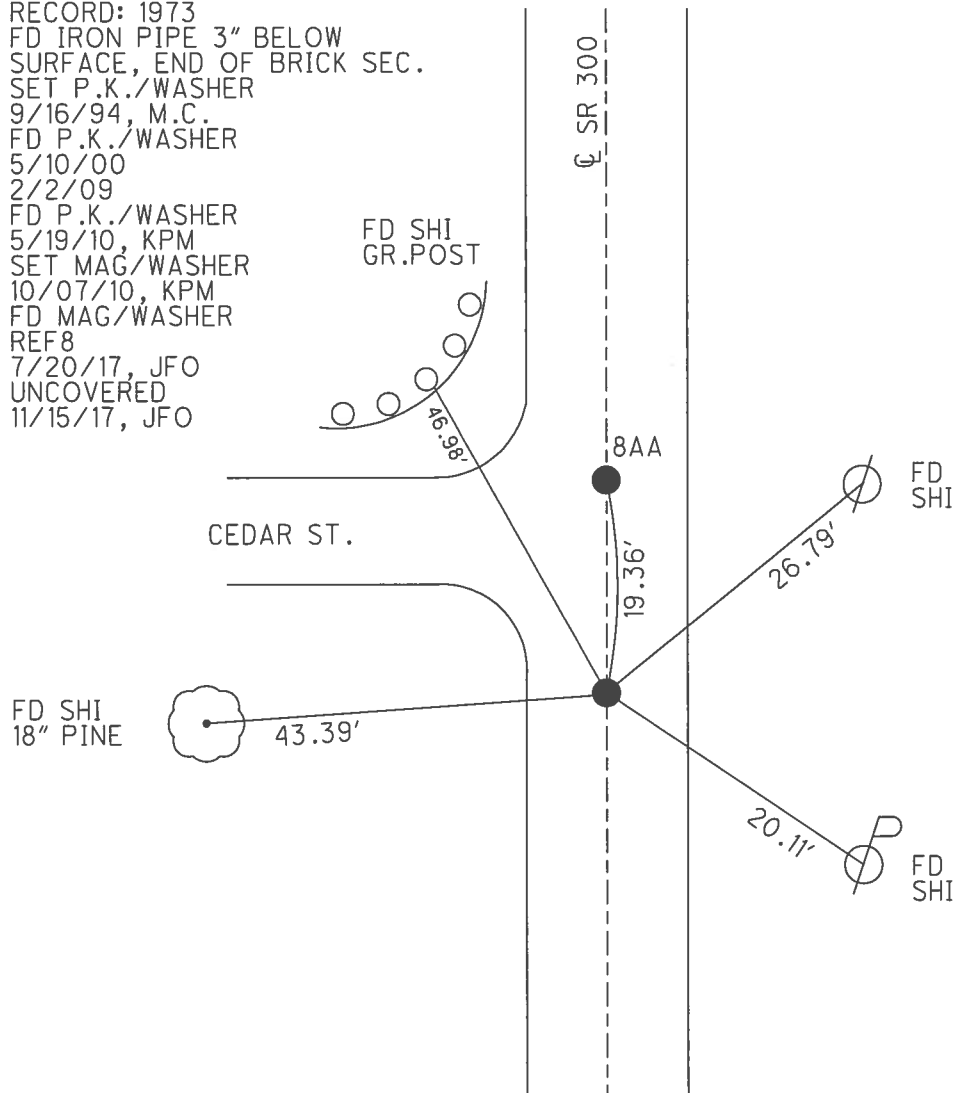
PERSONNEL \_\_\_\_\_ REFERENCE NO. 8 SHEET 11 OF 22  
 NOTES RHOADES \_\_\_\_\_ DATE 7/20/17 ROUTE SR 300  
 H.C. O'DONNELL \_\_\_\_\_ WEATHER SUNNY COUNTY SANDUSKY  
 R.C. POORE \_\_\_\_\_ TEMP. 78° TOWNSHIP MADISON  
 \_\_\_\_\_ SECTION 23  
 \_\_\_\_\_ T 5 N R 13 E

TYPE MONUMENT MAG/WASHER  
 ON SURFACE - ~~BELOW~~ ON \_\_\_\_\_  
 LEFT - ☉ PAV'T - RIGHT ON \_\_\_\_\_  
11.5' TO LT EDGE PAVEMENT  
 S.L.M. 185+20.73



GRID: NORTHING: 629552.566 EASTING: 1743566.607

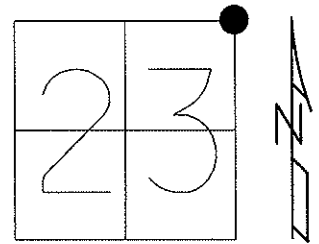
RECORD: 1973  
 FD IRON PIPE 3" BELOW  
 SURFACE, END OF BRICK SEC.  
 SET P.K./WASHER  
 9/16/94, M.C.  
 FD P.K./WASHER  
 5/10/00  
 2/2/09  
 FD P.K./WASHER  
 5/19/10, KPM  
 SET MAG/WASHER  
 10/07/10, KPM  
 FD MAG/WASHER  
 REF8  
 7/20/17, JFO  
 UNCOVERED  
 11/15/17, JFO



O.D.O.T. DISTRICT 2 SURVEY OFFICE (USE ONLY)

PERSONNEL	REFERENCE NO. <u>8</u>	SHEET <u>11</u> OF <u>22</u>
NOTES <u>MOSER</u>	DATE <u>5/19/10</u>	ROUTE <u>SR 300</u>
H.C. <u>GOLDBERG</u>	WEATHER <u>SUNNY</u>	COUNTY <u>SANDUSKY</u>
R.C. <u>HARBAUGH</u>	TEMP. <u>75°</u>	TOWNSHIP <u>MADISON</u>
		SECTION <u>23</u>
		T <u>5</u> N R <u>13</u> E

TYPE MONUMENT A+B= P.K.NAIL/WASHER  
 ON SURFACE - ~~BELOW~~ ON  
 LEFT - Q PAV'T - RIGHT ON  
11.5' TO LT EDGE PAVEMENT  
 S.L.M. 185+17.5



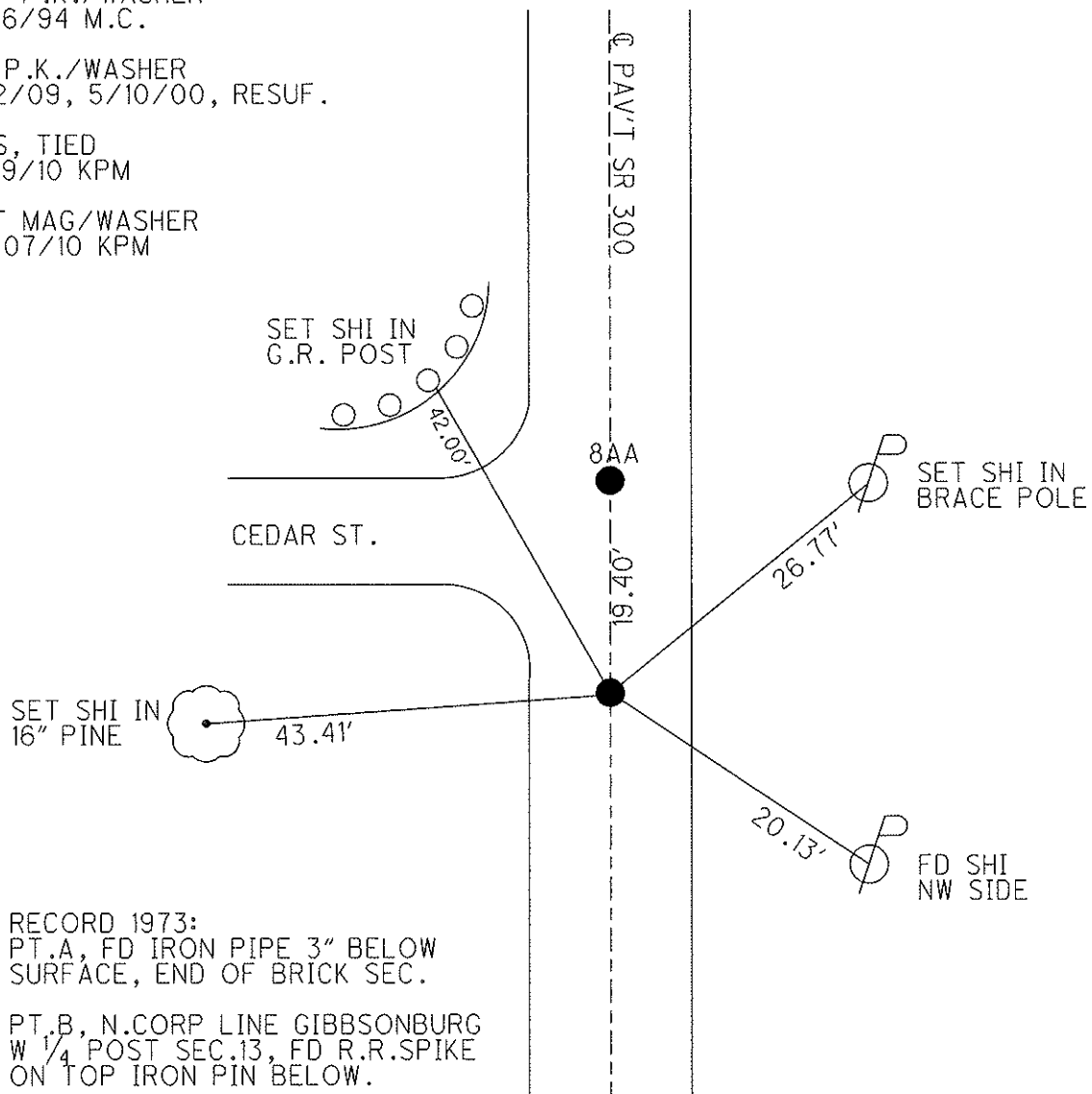
Grid: Northing: 629552.621 Easting: 1743566.445

SET P.K./WASHER  
9/16/94 M.C.

FD P.K./WASHER  
2/2/09, 5/10/00, RESUF.

GPS, TIED  
5/19/10 KPM

SET MAG/WASHER  
10/07/10 KPM



RECORD 1973:  
PT.A, FD IRON PIPE 3" BELOW  
SURFACE, END OF BRICK SEC.

PT.B, N.CORP LINE GIBBSONBURG  
W 1/4 POST SEC.13, FD R.R.SPIKE  
ON TOP IRON PIN BELOW.

PERSONNEL	TITLE	PERSONNEL	TITLE
Cronin			
Ash			
Ripple			

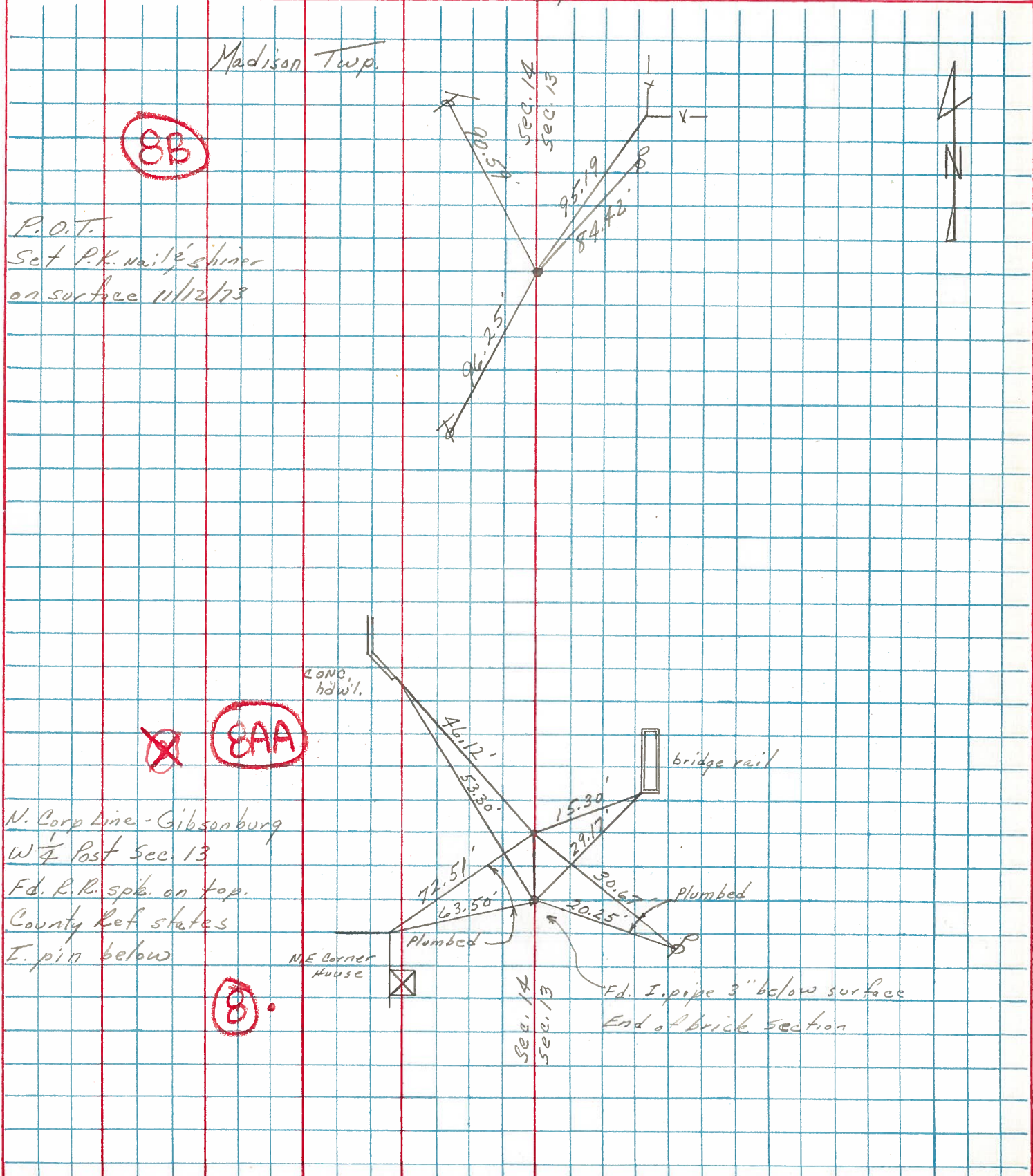
COUNTY Sandusky DATE Drawn 11/7/73

S. R. #300 WEATHER

SEC. U.S #6 to U.S #20 TEMP.

DESCRIPTION Ties for Control Points

LEFT CENTER LINE RIGHT JOB NO.



P.O.T.  
Set P.K. nail & shiner  
on surface 11/12/73

N. Corp Line - Gibsonburg  
W 1/4 Post Sec. 13  
F.d. R.R. spk. on top.  
County Ref states  
I. pin below

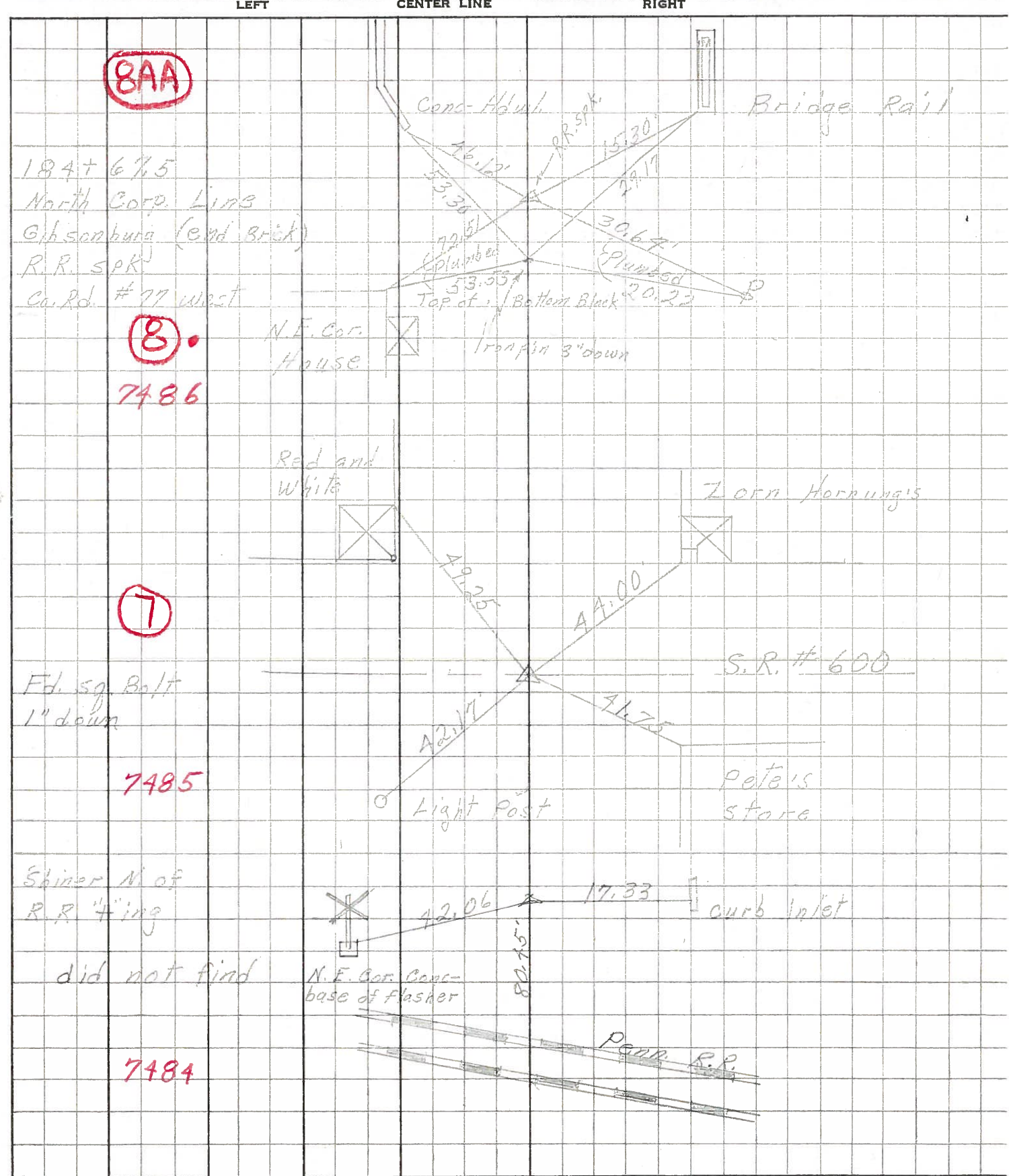
NE Corner House

bridge rail

Plumbed

F.d. I. pipe 3" below surface  
End of brick section

PERSONNEL	TITLE	PERSONNEL	TITLE	COUNTY	sandusky	DATE	4-17-68
Schneider		Potts		S. R.	300	WEATHER	Cloudy
Mosser				SEC. U.S. #	6 to U.S. # 20	TEMP.	65°
Barbour				DESCRIPTION	Ties for Control Points		JOB NO.



PERSONNEL TITLE PERSONNEL TITLE

COUNTY SANDUSKY

DATE MARCH 21, 1950

MORRISON  
Swarden  
Holcombe

S. R. 300

WEATHER Rain & Foggy

SEC. \_\_\_\_\_

TEMP. +45°

DESCRIPTION GIBSONBURG STREETS (MAIN ST.)

JOB NO. \_\_\_\_\_

LEFT

CENTER LINE

RIGHT

P.I. 184+67.5 iron pipe (Found)

8

N. Corp. Line & End of Brick

MADISON ST. E.

P.I. 158+39.25

$\Delta = 0^\circ - 32' Lt.$

Found iron bolt 1' down in 6" pipe.

S.R. 300 & 600 intersection

12/29/60

MORRISON

& CREW

S.R. 600-E.

NE. Cor Cont.  
Base. Fletcher

Set Shiner on line N. Side of RR.

Curb inlet.

Backed Stationing from 184+67.5  
South to Madison St. Turned  $\Delta$  of  $0^\circ 32' Lt.$   
as of old notes, and produced line to  
Shiner Set N. of RR. Xing.

