

O.D.O.T. DISTRICT 2 SURVEY OFFICE (USE ONLY)

PERSONNEL

REFERENCE NO. 8 AA

SHEET 12 OF 22

NOTES NIESE
 H.C. AUBLE
 R.C. NIESE

DATE 4/22/21
 WEATHER SUNNY
 TEMP. 37°

ROUTE SR 300
 COUNTY SANDUSKY
 TOWNSHIP MADISON
 SECTION 14
 T 5 N R 13 E

DWG BY NIESE PID CHIP SEAL

TYPE MONUMENT MAG/WASHER

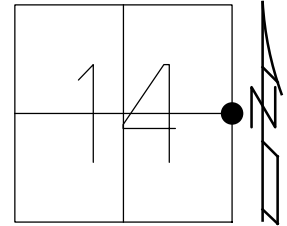
ON SURFACE - ~~BELOW~~ ON

OFFSET C PAVEMENT ON LT : RT
10.7' TO LT EDGE PAVEMENT

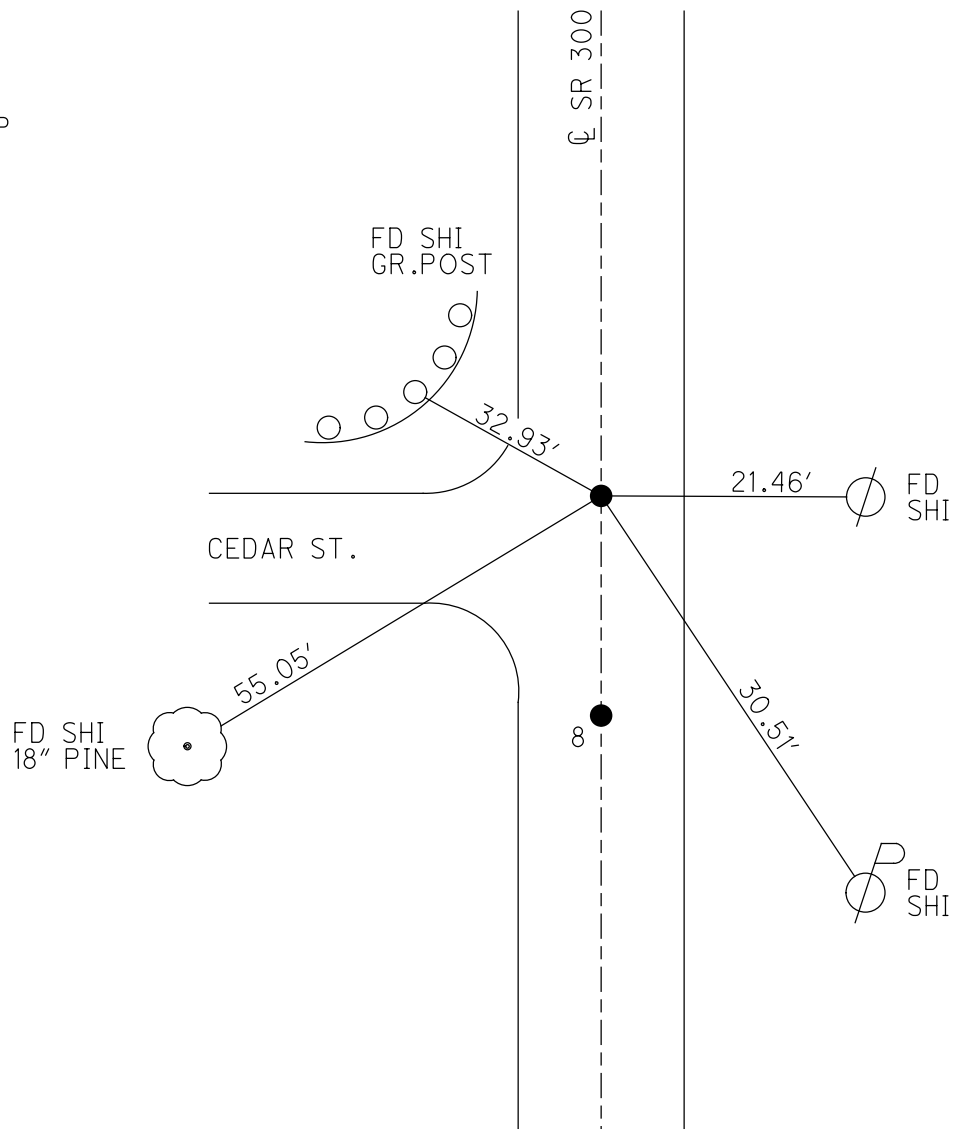
STATION: 185+40.03

HORIZ.DATUM: NAD83(2011) GEOID: 2018

GRID: NORTHING: 629571.890 EASTING: 1743567.629



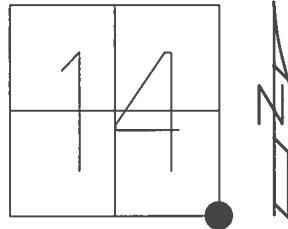
RECORD: 1973
 N.CORP LINE
 GIBBSONBURG
 FD R.R.SPIKE ATOP
 IPIN BELOW
 SET P.K./WASHER
 9/16/94, M.C.
 FD P.K./WASHER
 5/10/00
 2/2/09
 FD P.K./WASHER
 5/19/10, KPM
 SET MAG/WASHER
 10/07/10, KPM
 FD MAG/WASHER
 REFAA8
 7/20/17,
 11/15/17, JFO
 FD MAG/WASHER
 REFAA8
 4/22/21, DSA
 10/6/21, JFO



O.D.O.T. DISTRICT 2 SURVEY OFFICE (USE ONLY)

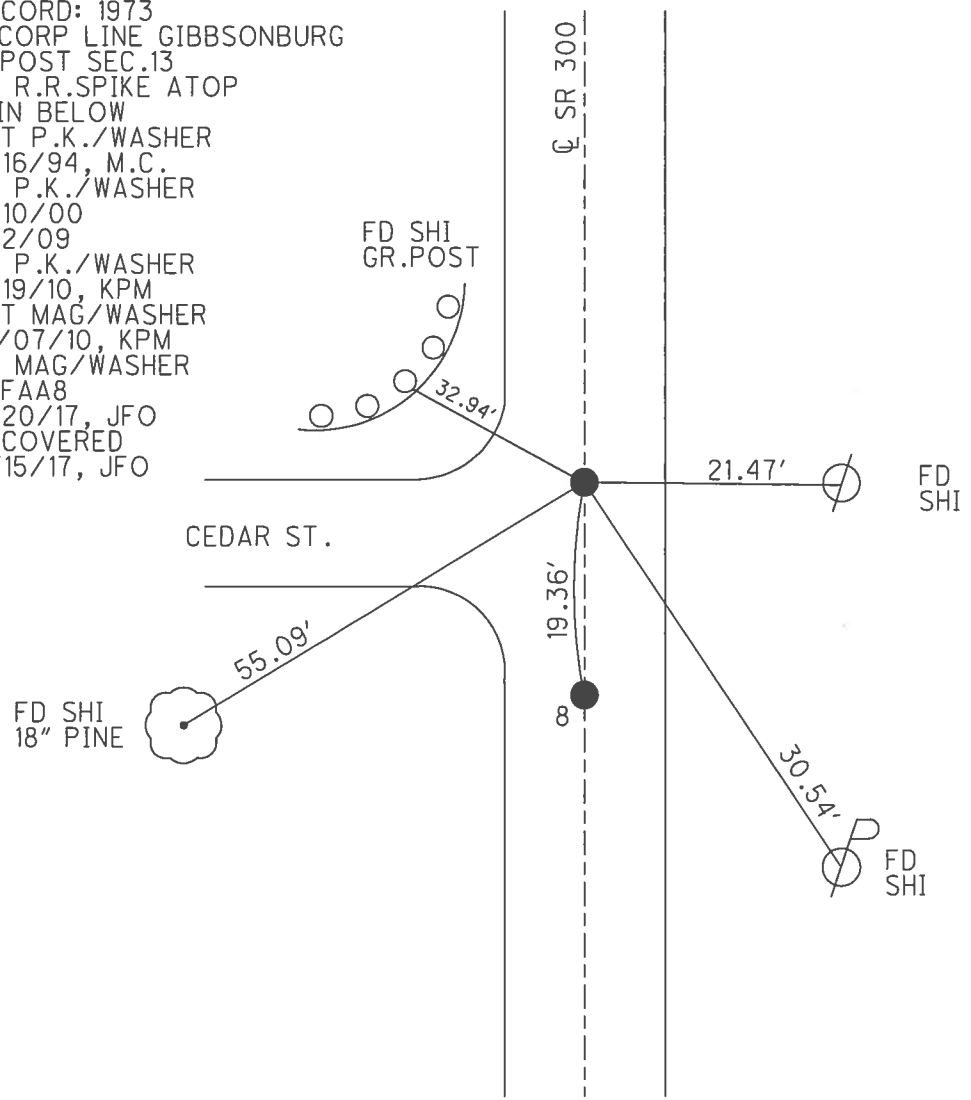
PERSONNEL _____ REFERENCE NO. 8 AA SHEET 12 OF 22
 NOTES RHOADES DATE 7/20/17 ROUTE SR 300
 H.C. O'DONNELL WEATHER SUNNY COUNTY SANDUSKY
 R.C. POORE TEMP. 78° TOWNSHIP MADISON
 _____ SECTION 14
 _____ T 5 N R 13 E

TYPE MONUMENT MAG/WASHER
 ON SURFACE - ~~BELOW~~ ON
 LEFT - Q PAV'T - RIGHT ON
10.7' TO LT EDGE PAVEMENT
 S.L.M. 185+40.03



GRID: NORTHING: 629571.896 EASTING: 1743567.676

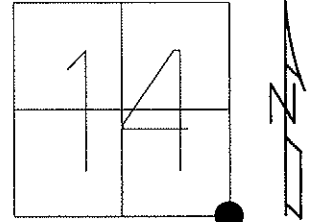
RECORD: 1973
 N.CORP LINE GIBBSONBURG
 W POST SEC.13
 FD R.R.SPIKE ATOP
 IPIN BELOW
 SET P.K./WASHER
 9/16/94, M.C.
 FD P.K./WASHER
 5/10/00
 2/2/09
 FD P.K./WASHER
 5/19/10, KPM
 SET MAG/WASHER
 10/07/10, KPM
 FD MAG/WASHER
 REFAA8
 7/20/17, JFO
 UNCOVERED
 11/15/17, JFO



O.D.O.T. DISTRICT 2 SURVEY OFFICE (USE ONLY)

PERSONNEL _____ REFERENCE NO. 8-AA SHEET 12 OF 22
 NOTES MOSER DATE 5/19/10 ROUTE SR 300
 H.C. GOLDBERG WEATHER SUNNY COUNTY SANDUSKY
 R.C. HARBAUGH TEMP. 75° TOWNSHIP MADISON
 _____ SECTION 14
 _____ T. 5 N R. 13 E

TYPE MONUMENT P.K.NAIL/WASHER
 ON SURFACE - ~~BELOW~~ ON
 LEFT - Q PAV'T - RIGHT ON
10.7' TO LT EDGE PAVEMENT
 S.L.M. 185+37



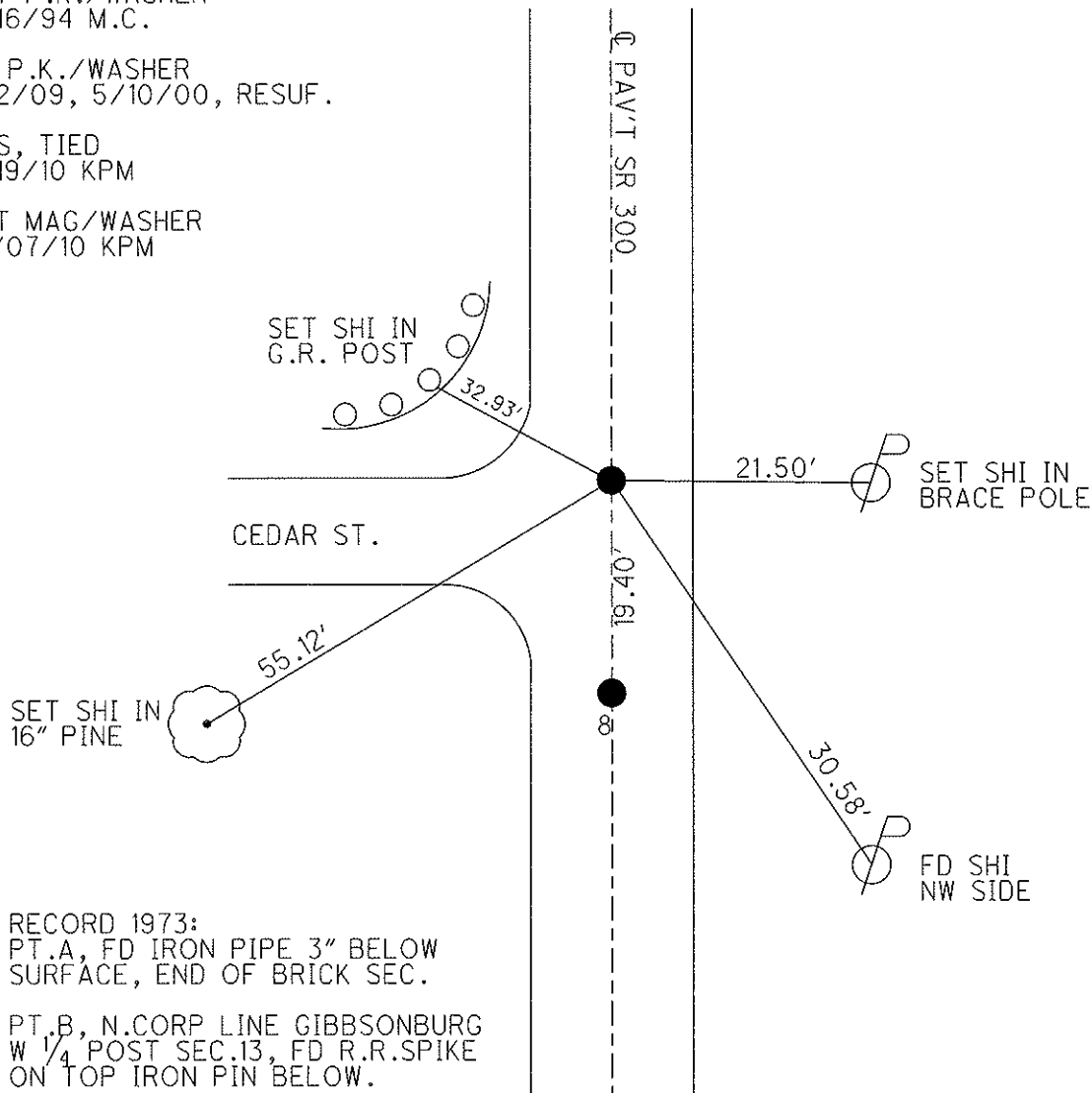
Grid: Northing: 629571.928 Easting: 1743567.550

SET P.K./WASHER
 9/16/94 M.C.

FD P.K./WASHER
 2/2/09, 5/10/00, RESUF.

GPS, TIED
 5/19/10 KPM

SET MAG/WASHER
 10/07/10 KPM

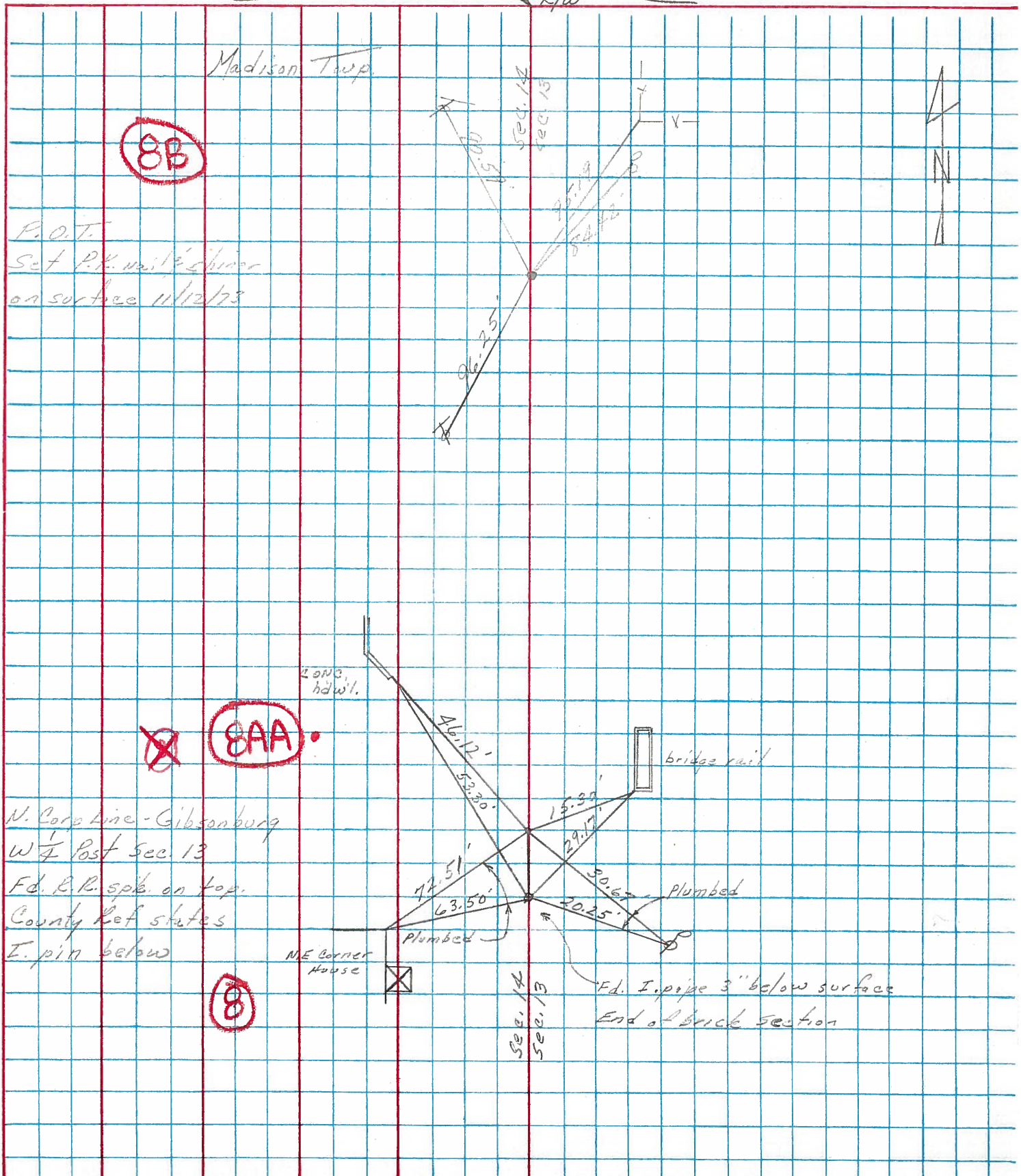


RECORD 1973:
 PT.A, FD IRON PIPE 3" BELOW
 SURFACE, END OF BRICK SEC.

PT.B, N.CORP LINE GIBBSONBURG
 W 1/4 POST SEC.13, FD R.R.SPIKE
 ON TOP IRON PIN BELOW.

PERSONNEL Cronin TITLE _____ PERSONNEL Ash TITLE _____
 COUNTY Sandusky DATE Drawn 11/7/73
 S. R. #300 WEATHER _____
 SEC. U.S #6 to U.S #20 TEMP. _____

DESCRIPTION Ties for Control Points JOB NO. _____



PERSONNEL	TITLE	PERSONNEL	TITLE	COUNTY	<u>sandusky</u>	DATE	<u>4-17-68</u>
<u>Schneider</u>		<u>Potts</u>		S. R.	<u>300</u>	WEATHER	<u>Cloudy</u>
<u>Mosser</u>				SEC. U.S. #	<u>6 to U.S. # 2.0</u>	TEMP.	<u>65°</u>
<u>Barbour</u>				DESCRIPTION	<u>Ties for Control Points</u>		JOB NO.
<u>Redding</u>							

