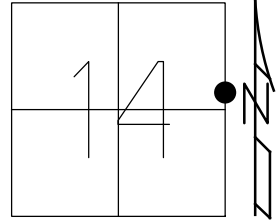


O.D.O.T. DISTRICT 2 SURVEY OFFICE (USE ONLY)

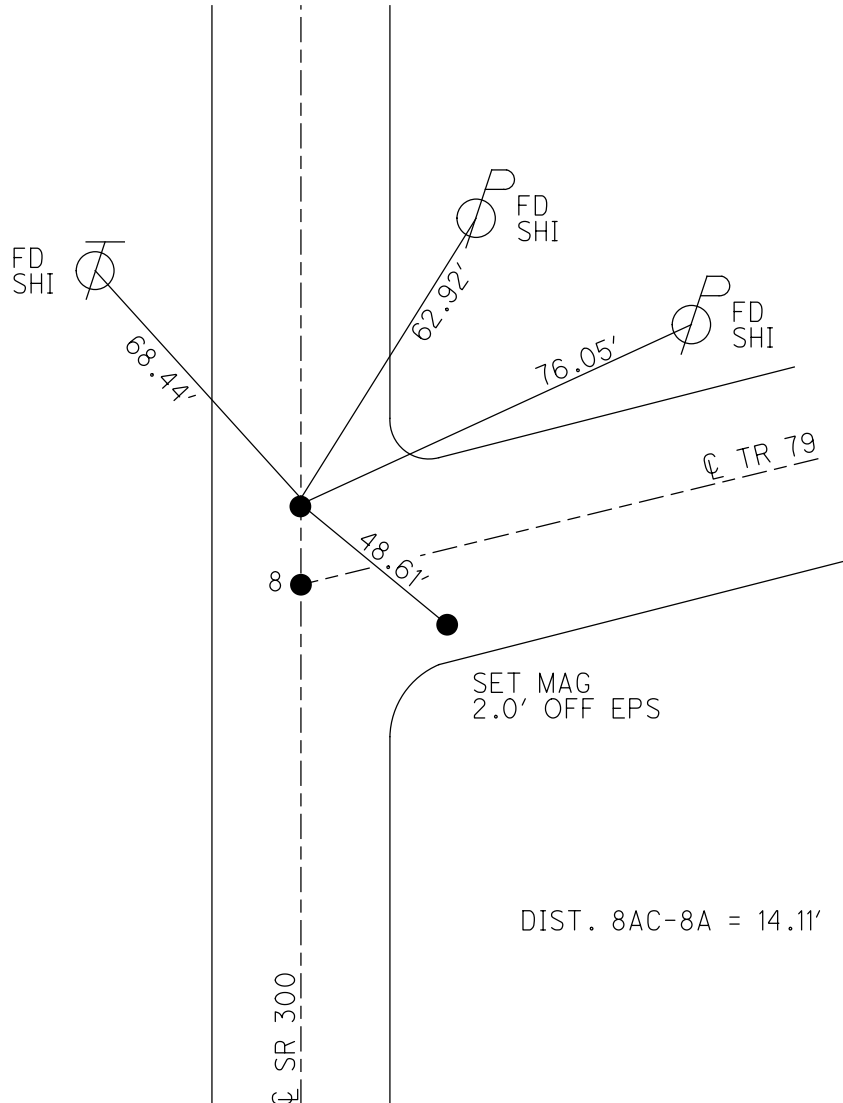
PERSONNEL _____ REFERENCE NO. 8 A SHEET 14 OF 22
 NOTES NIESE DATE 4/22/21 ROUTE SR 300
 H.C. AUBLE WEATHER SUNNY COUNTY SANDUSKY
 R.C. NIESE TEMP. 37° TOWNSHIP MADISON
 DWG BY NIESE PID CHIP SEAL SECTION 14
 T 5 N R 13 E

TYPE MONUMENT MAG/WASHER
 ON SURFACE - ~~BELOW~~ ON
 OFFSET ☉ PAVEMENT ON LT : RT
11.5' TO LT EDGE PAVEMENT
 STATION: 190+05.61



HORIZ.DATUM: NAD83(2011) GEOID: 2018
 GRID: NORTHING: 630024.376 EASTING: 1743582.626

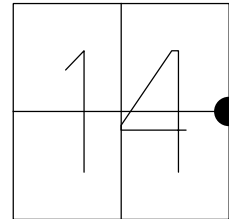
RECORD:
 SET P.K./WASHER
 9/16/94, M.C.
 FD P.K./WASHER
 2/2/09
 5/10/00
 5/19/10, KPM
 3/2/11, KPM
 FD P.K. NAIL
 4/16/13, SDC
 SET MAG/WASHER
 6/4/13, SDC
 FD MAG/WASHER
 REFA8
 4/22/21, DSA
 10/6/21, JFO



O.D.O.T. DISTRICT 2 SURVEY OFFICE (USE ONLY)

PERSONNEL _____ REFERENCE NO. 8 A SHEET 14 OF 22
 NOTES RHOADES DATE 4/16/13 ROUTE SR 300
 H.C. CODER WEATHER CLOUDY COUNTY SANDUSKY
 R.C. RHOADES TEMP. 56° TOWNSHIP MADISON
 _____ SECTION 14
 _____ T 5 N R 13 E

TYPE MONUMENT P.K.NAIL
 ON SURFACE - ~~BELOW~~ ON
~~LEFT~~ - Q PAV'T - ~~RIGHT~~ ON
11.5' TO LT. EDGE PAVEMENT
 S.L.M. 190+05.61



GRID: NORTHING: 630024.325 EASTING: 1743581.985

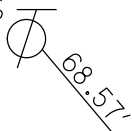
SET P.K./WASHER
 9/16/94 M.C.

FD P.K./WASHER
 2/2/09, 5/10/00, RESRF.
 5/19/10 KPM

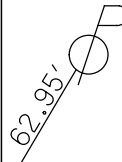
GPS & TIED
 3-2-11, KPM

SET MAG/WASHER
 GPS, FINREFA8
 6/4/13, SDC

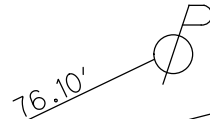
FD N&S
 S/S



FD N&S
 SW/S



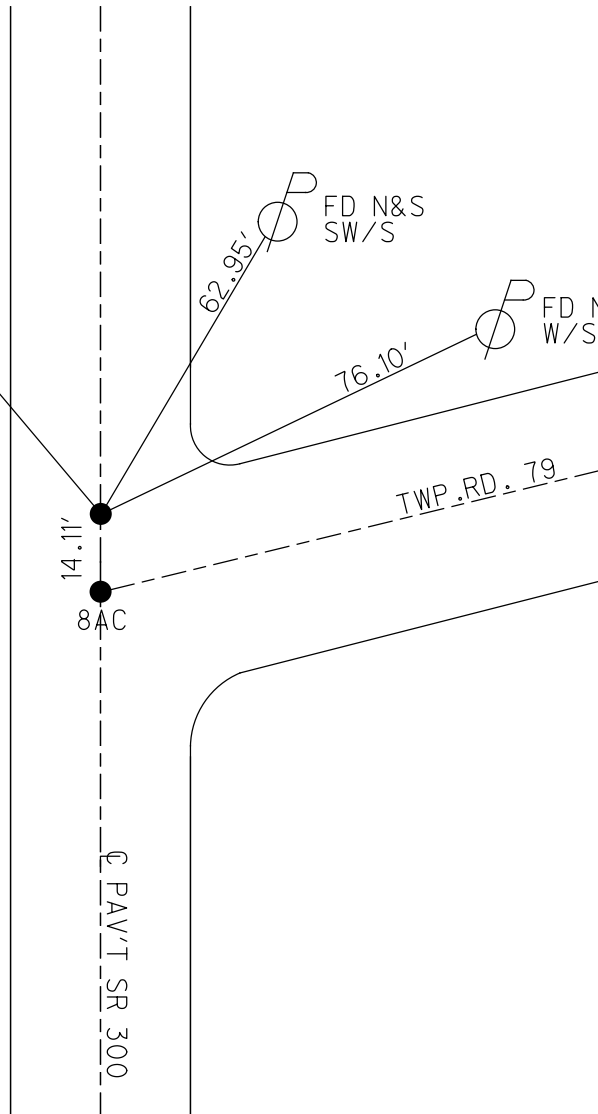
FD N&S
 W/S



14.11'
 8 AC

Q PAV'T SR 300

TWP. RD. 79



O.D.O.T. DISTRICT 2 SURVEY OFFICE

PERSONNEL _____ REFERENCE NO. 8-A SHEET 10 OF 15
 NOTES RIPPLE DATE 7/21/94 ROUTE SR 64
 H.C. BARBOUR WEATHER CLOUDY COUNTY FULTON
 R.C. GEYMAN TEMP. 80° TOWNSHIP MADISON
 _____ SECTION 14, 15
 _____ T 5 N R 13 E

TYPE MONUMENT FD P.K.NAIL
 ON SURFACE - ~~BELOW~~ ON
 LEFT - C PAV'T - RIGHT ON
10.4' TO LT. EDGE PAVEMENT
 S.L.M. 189+91.5'
 Grid: Northing: _____ Easting: _____

