

O.D.O.T. DISTRICT 2 SURVEY OFFICE (USE ONLY)

PERSONNEL

REFERENCE NO. 8 B

SHEET 15 OF 22

NOTES NIESE

DATE 4/22/21

ROUTE SR 300

H.C. AUBLE

WEATHER SUNNY

COUNTY SANDUSKY

R.C. NIESE

TEMP. 37°

TOWNSHIP MADISON

SECTION 14

DWG BY NIESE

PID CHIP SEAL

T 5 N R 13 E

TYPE MONUMENT MAG/WASHER

ON SURFACE - ~~BELOW~~ ON

OFFSET  $\varnothing$  PAVEMENT 1.2' LT : ~~RT~~

9.7' TO LT EDGE PAVEMENT

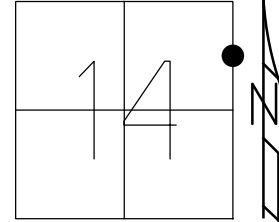
STATION: 197+75

HORIZ.DATUM: NAD83(2011)

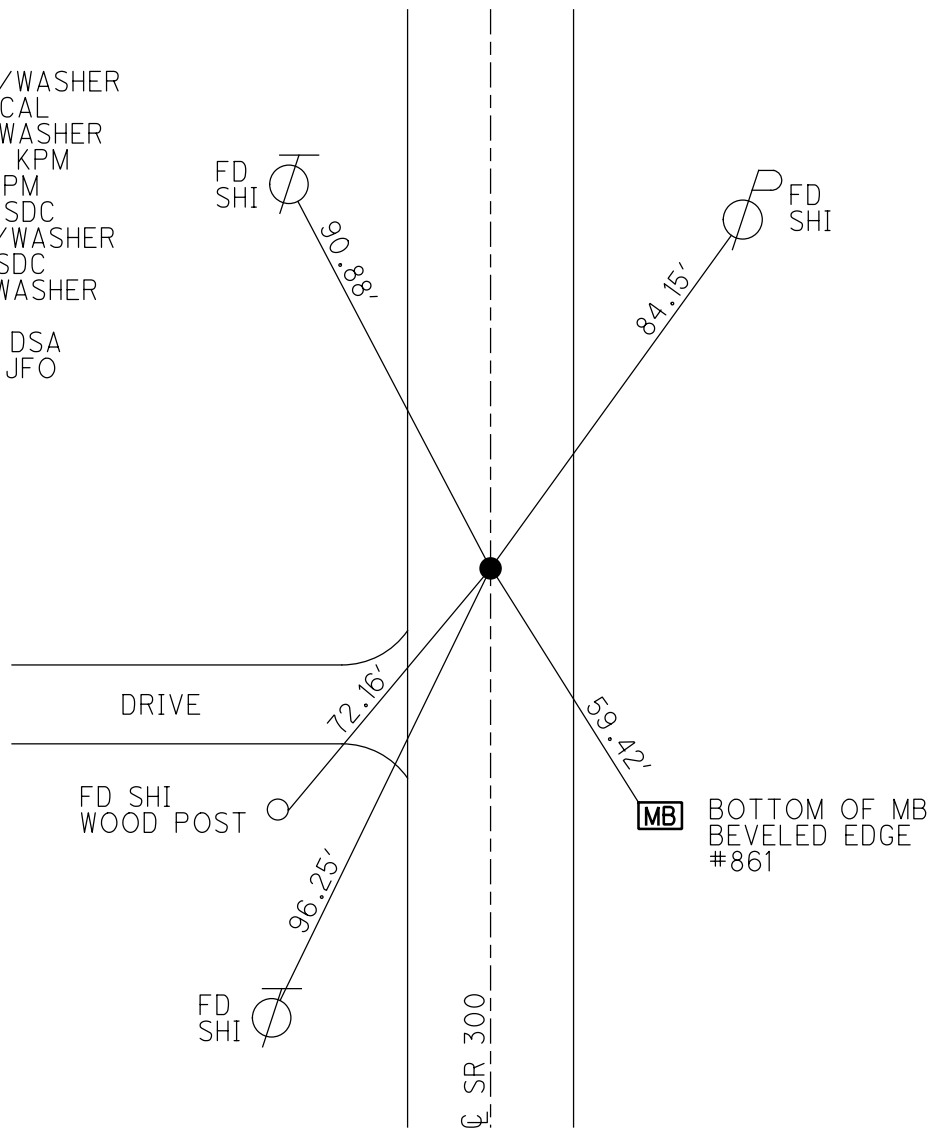
GEOID: 2018

GRID: NORTHING: 630805.650

EASTING: 1743608.632



RECORD:  
 SET P.K./WASHER  
 9/16/94 CAL  
 FD P.K./WASHER  
 5/10/00, KPM  
 3/2/11, KPM  
 4/16/13, SDC  
 SET MAG/WASHER  
 6/4/13, SDC  
 FD MAG/WASHER  
 REFB8  
 4/22/21, DSA  
 10/6/21, JFO



O.D.O.T. DISTRICT 2 SURVEY OFFICE (USE ONLY)

PERSONNEL \_\_\_\_\_

REFERENCE NO. 8 B

SHEET 15 OF 22

NOTES RHOADES

DATE 4/16/13

ROUTE SR 300

H.C. CODER

WEATHER CLOUDY

COUNTY SANDUSKY

R.C. RHOADES

TEMP. 56°

TOWNSHIP MADISON

SECTION 14

T 5 N R 13 E

TYPE MONUMENT P.K./WASHER

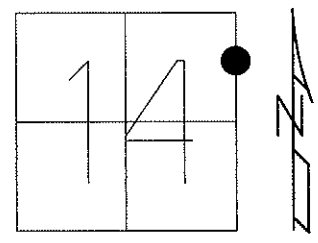
ON SURFACE - ~~BELOW~~ ON

LEFT - ~~C PAV'T~~ - ~~RIGHT~~ 1.2'

9.7' TO LT EDGE PAVEMENT

S.L.M. 197+75

Grid: Northing: 630805.614 Easting: 1743608.592

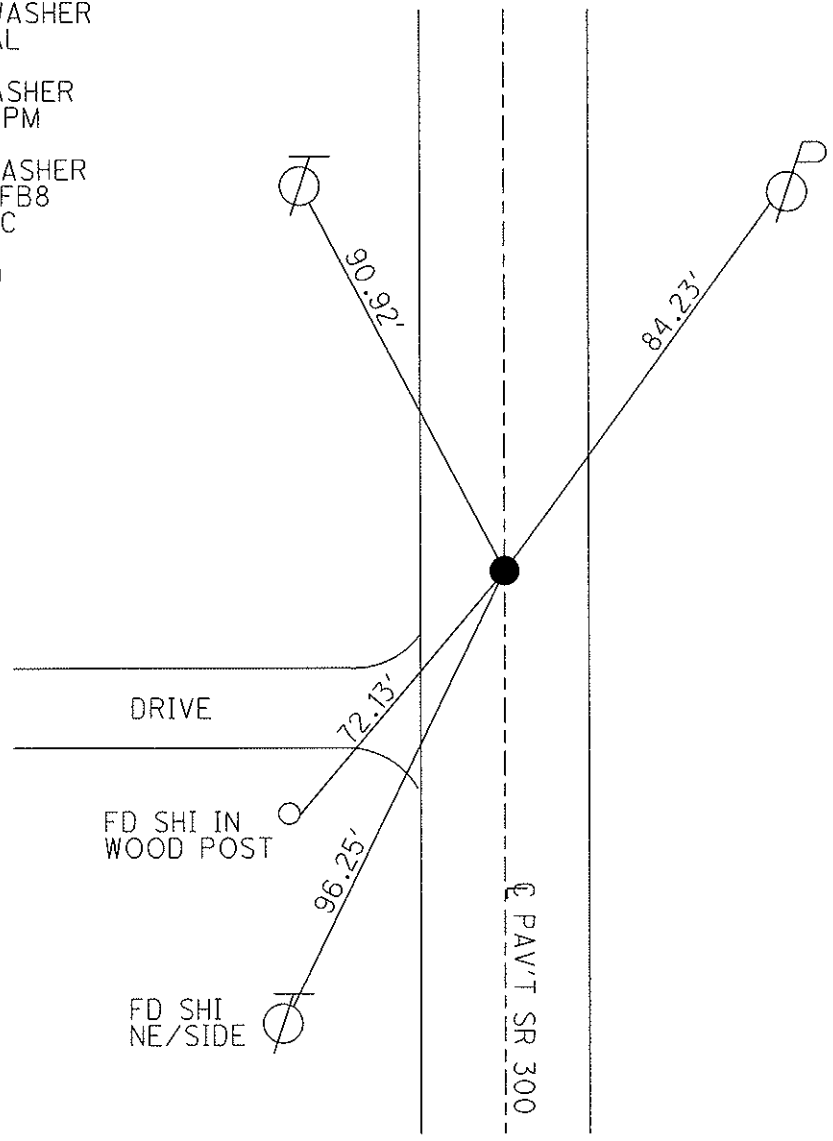


SET P.K./WASHER  
9/16/94 CAL

FD P.K./WASHER  
5/10/00, KPM

SET MAG/WASHER  
GPS, FINREFB8  
6/4/13, SDC

GPS & TIED  
3-2-11  
KPM



# O.D.O.T. DISTRICT 2 SURVEY OFFICE

PERSONNEL

REFERENCE NO. 8-13

SHEET 11 OF 15

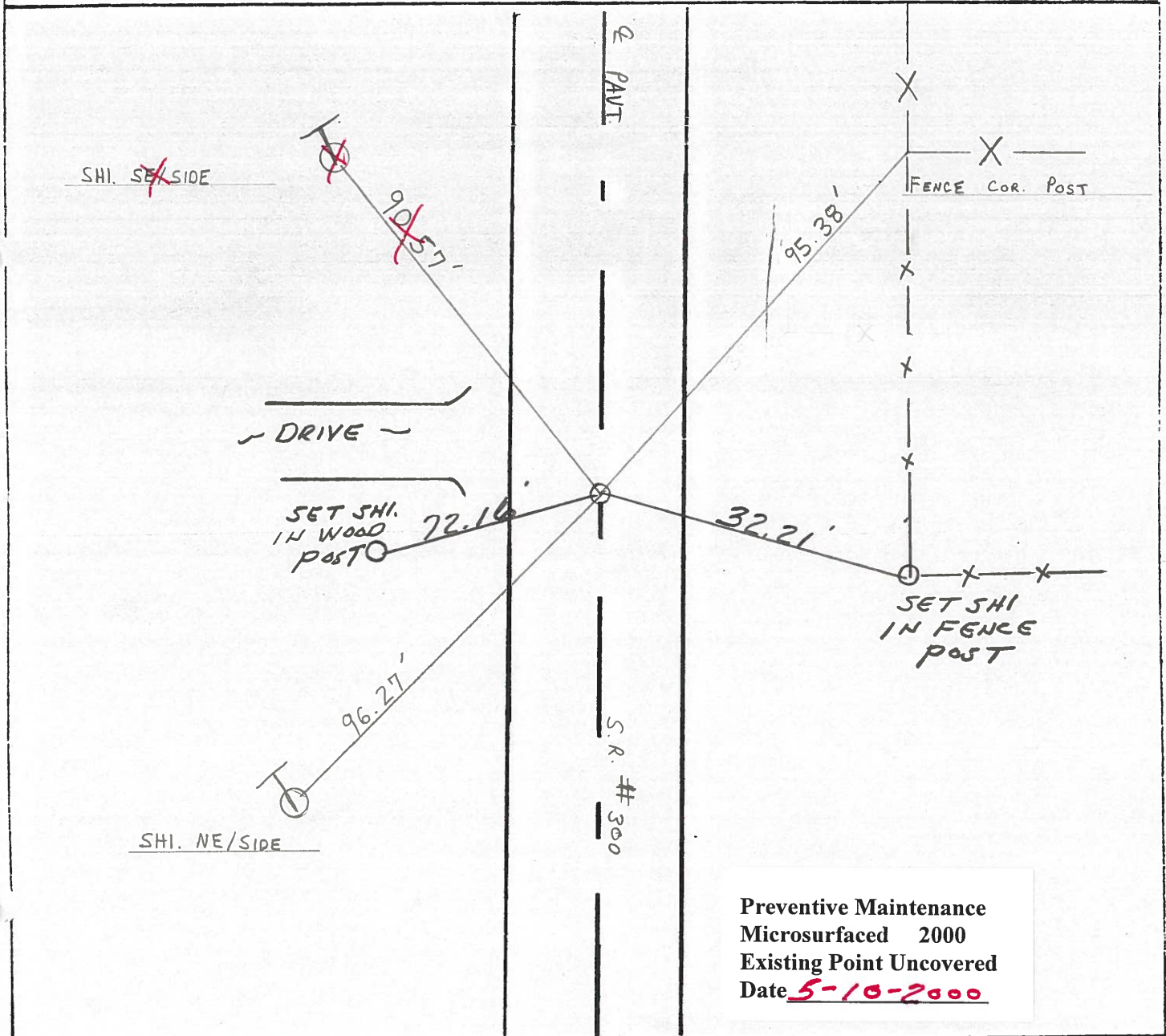
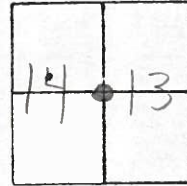
NOTES LOEHRKE  
 H.C. CANTERBURY  
 R.C. HERMILLER  
VOGEL

DATE 7-21-94  
 WEATHER NICE  
 TEMP. +80°

ROUTE S.R. #300  
 COUNTY SANDUSKY  
 TOWNSHIP MADISON  
 SECTION 13, 14  
T 5 N R 13 E

TYPE MONUMENT PK/WASHER  
 ON SURFACE - BELOW ON SURFACE  
 LEFT - Q PAV'T. - RIGHT 1' LT &  
9' TO LT. EDGE PAVEMENT  
 S.L.M. 197 + 75

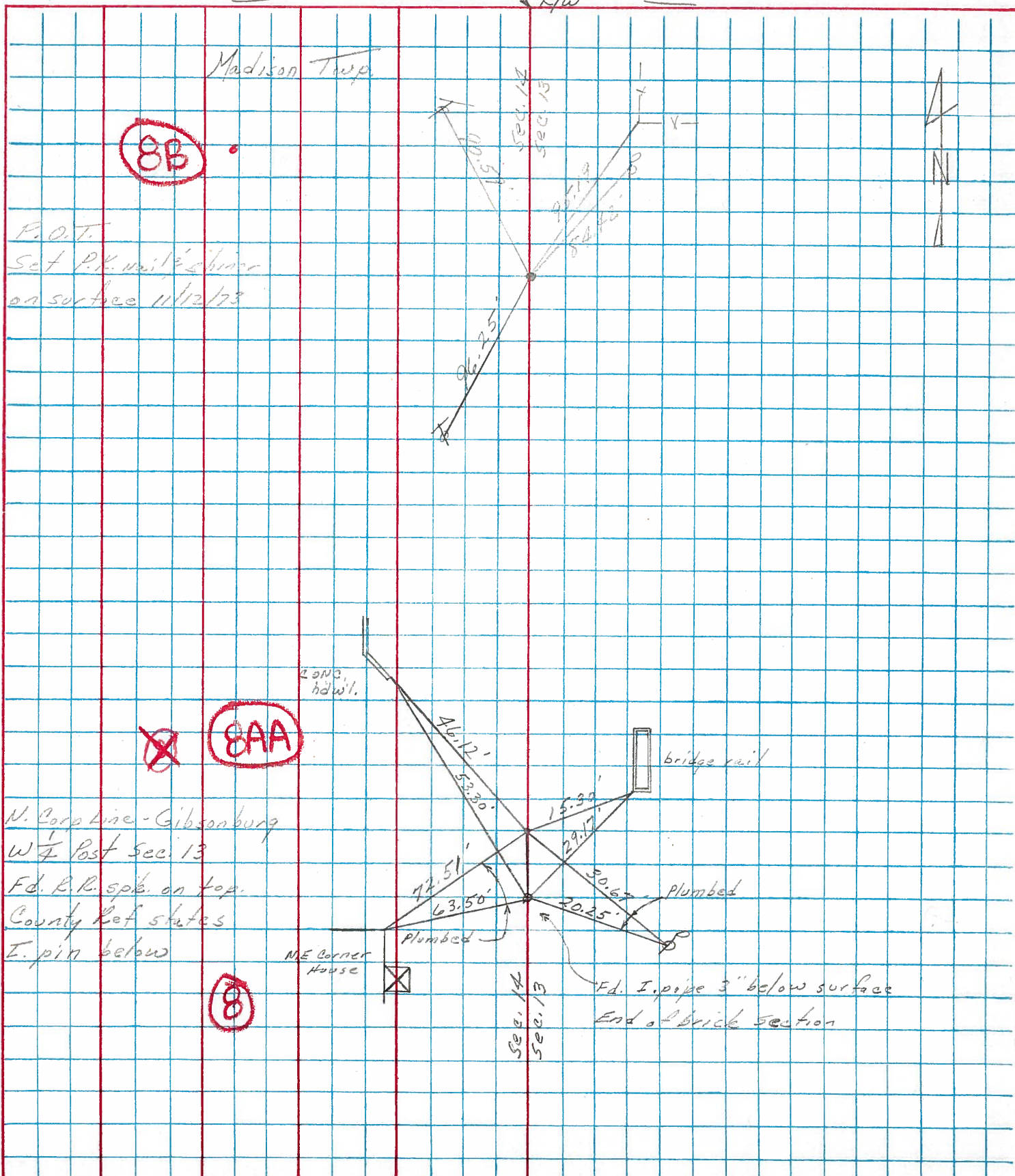
Set P.K. / washer  
 9-16-94  
 CAL



Preventive Maintenance  
 Microsurfaced 2000  
 Existing Point Uncovered  
 Date 5-10-2000

PERSONNEL Cronin TITLE \_\_\_\_\_ PERSONNEL Ash TITLE \_\_\_\_\_ COUNTY Sandusky DATE Drawn 11/7/73  
 PERSONNEL Ripple TITLE \_\_\_\_\_ S. R. #300 WEATHER \_\_\_\_\_  
 SEC. U.S #6 to U.S #20 TEMP. \_\_\_\_\_

DESCRIPTION Ties for Control Points LEFT \_\_\_\_\_ CENTER LINE \_\_\_\_\_ RIGHT \_\_\_\_\_ JOB NO. \_\_\_\_\_





PERSONNEL	TITLE	PERSONNEL	TITLE	COUNTY	DATE
Schneider		Potts		Sandusky	4-18-68
Mosser				S. R.	300
Borbour				WEATHER	Cloudy
Redding				SEC. U.S. #6 to U.S. #20	TEMP. 60°
DESCRIPTION				Ties for Contro	Points
				LEFT	CENTER LINE
					RIGHT
					JOB NO.

