

O.D.O.T. DISTRICT 2 SURVEY OFFICE (USE ONLY)

PERSONNEL

REFERENCE NO. 9

SHEET 16 OF 22

NOTES NIESE

DATE 4/22/21

ROUTE SR 300

H.C. AUBLE

WEATHER CLOUDY/WINDY

COUNTY SANDUSKY

R.C. NIESE

TEMP. 37°

TOWNSHIP MADISON

SECTION 11

DWG BY NIESE PID CHIP SEAL

T 5 N R 13 E

TYPE MONUMENT MAG/WASHER

ON SURFACE - ~~BELOW~~ ON

OFFSET Q PAVEMENT 1.7' LT : ~~RT~~

- TO - EDGE PAVEMENT

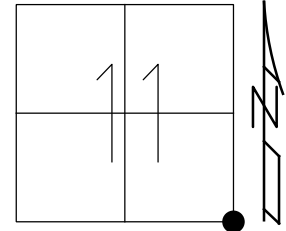
STATION: 211+91

HORZ.DATUM: NAD83(2011)

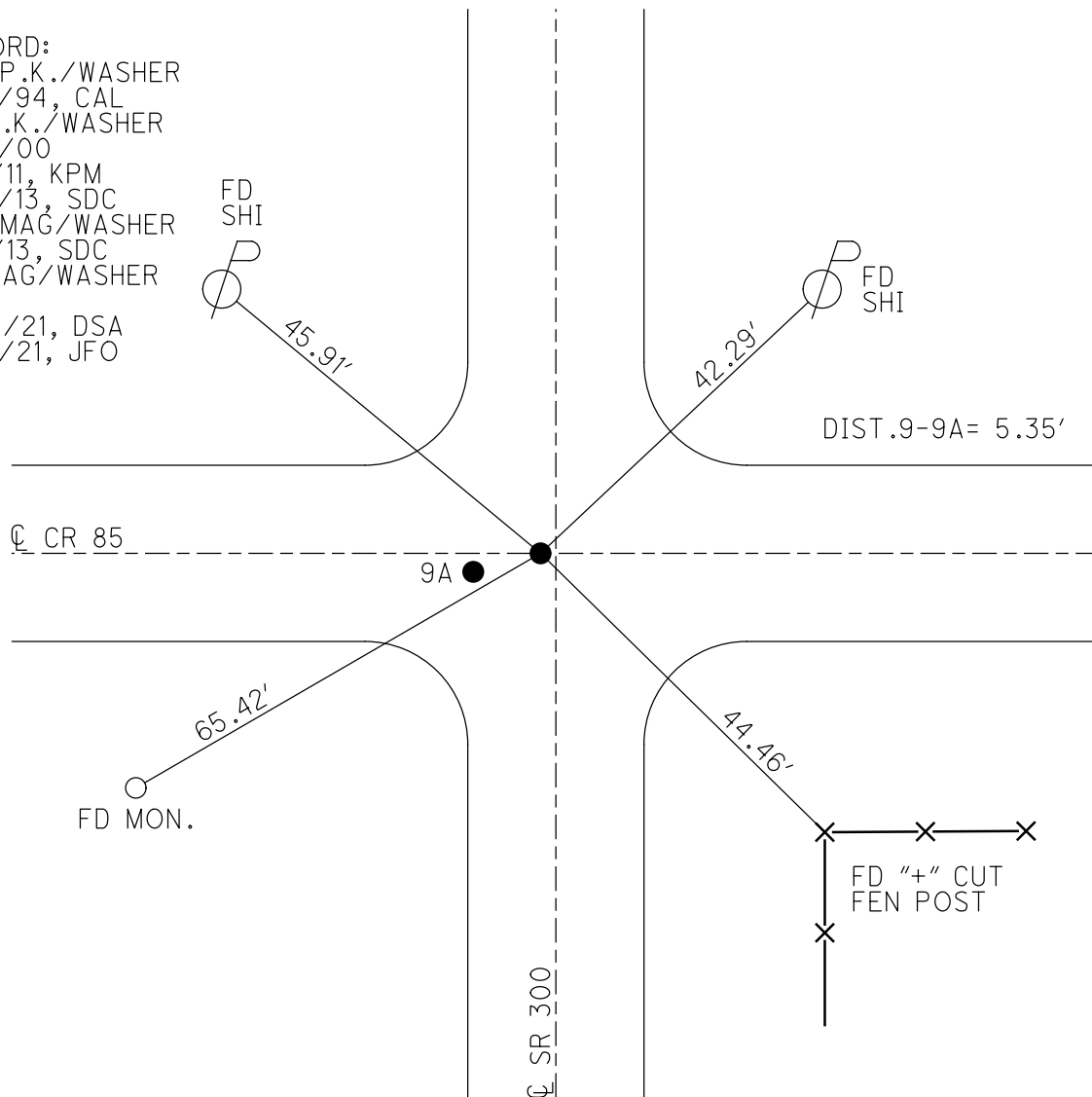
GEOID: 2018

GRID: NORTHING: 632218.440

EASTING: 1743655.404



RECORD:
 SET P.K./WASHER
 9/16/94, CAL
 FD P.K./WASHER
 5/10/00
 3/2/11, KPM
 4/16/13, SDC
 SET MAG/WASHER
 6/4/13, SDC
 FD MAG/WASHER
 REF9
 4/22/21, DSA
 10/6/21, JFO



O.D.O.T. DISTRICT 2 SURVEY OFFICE (USE ONLY)

PERSONNEL

REFERENCE NO. 9

SHEET 16 OF 22

NOTES RHOADES

DATE 4/16/13

ROUTE SR 300

H.C. CODER

WEATHER CLOUDY

COUNTY SANDUSKY

R.C. RHOADES

TEMP. 56°

TOWNSHIP MADISON

SECTION 11

T 5 N R 13 E

TYPE MONUMENT P.K./WASHER

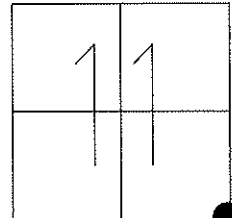
ON SURFACE - ~~BELOW~~ ON

LEFT - ~~C PAV'T~~ - RIGHT 1.7'

TO EDGE PAVEMENT

S.L.M. 211+91

Grid: Northing: 632218.565 Easting: 1743655.311



SET P.K./WASHER
9/16/94 CAL

FD P.K./WASHER
5/10/00

GPS & TIED
3-2-11

SET MAG/WASHER
GPS, FINREF9
6/4/13, SDC

FD SHI
SE/SIDE



45.98'



FD SHI
SW/SIDE

42.33'

© C.R.85

9A

5.35'

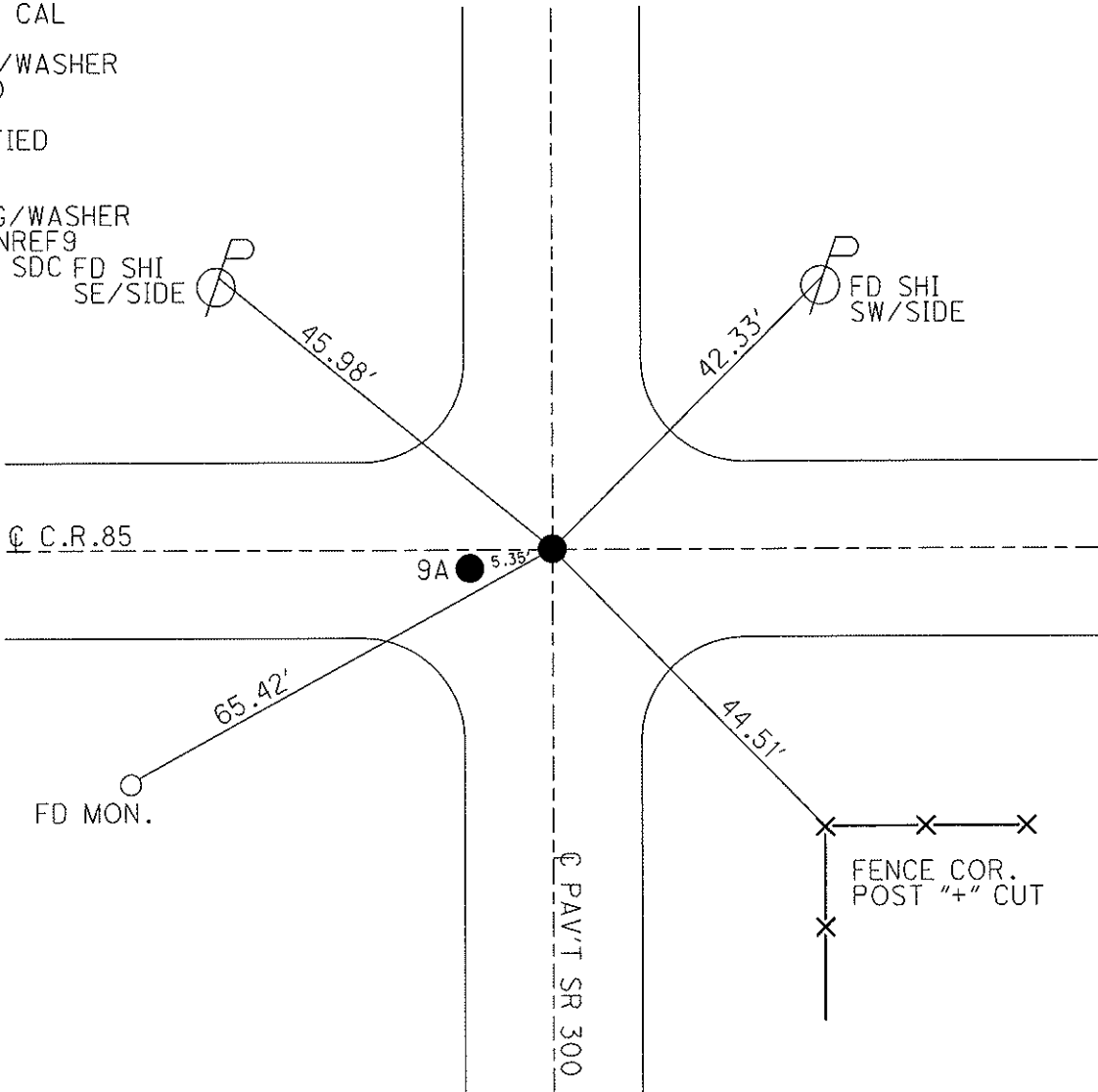
65.42'

FD MON.

44.51'

FENCE COR.
POST "+" CUT

© PAV'T SR 300



O.D.O.T. DISTRICT 2 SURVEY OFFICE

PERSONNEL

REFERENCE NO. 9

SHEET 12 OF 15

NOTES LOEHRKE

H.C. CANTERBURY

DATE 7-21-94

ROUTE S.R. # 300

R.C. HERMILLER

WEATHER NICE

COUNTY SANDUSKY

VOGEL

TEMP. + 80°

TOWNSHIP MADISON

SECTION 11, 12, 13, 14

T 5 N R 13 E

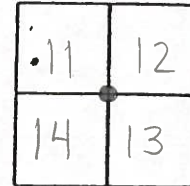
TYPE MONUMENT PK/WASHER

ON SURFACE - ~~BELOW~~ ON SURFACE

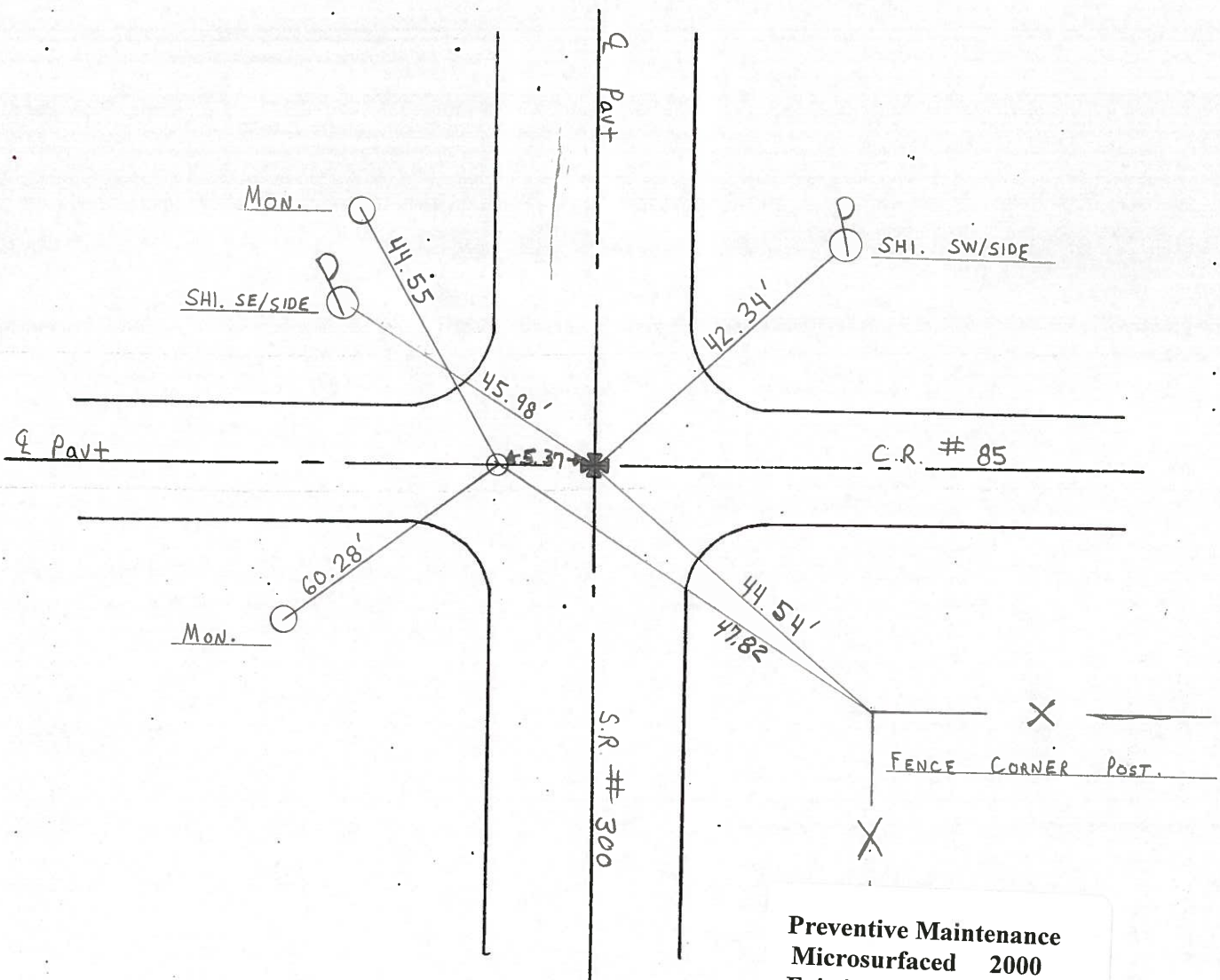
~~LEFT - & PAV'T. - RIGHT~~ & of BOTH

TO EDGE PAVEMENT

S.L.M. 211 + 91



Set P.K./washer
9-16-94 CAC



Preventive Maintenance
Microsurfaced 2000
Existing Point Uncovered
Date 5-10-2000

PERSONNEL TITLE PERSONNEL TITLE

Cronin _____
Ash _____
Ripple _____

COUNTY Sandusky DATE Drawn 11/13/73

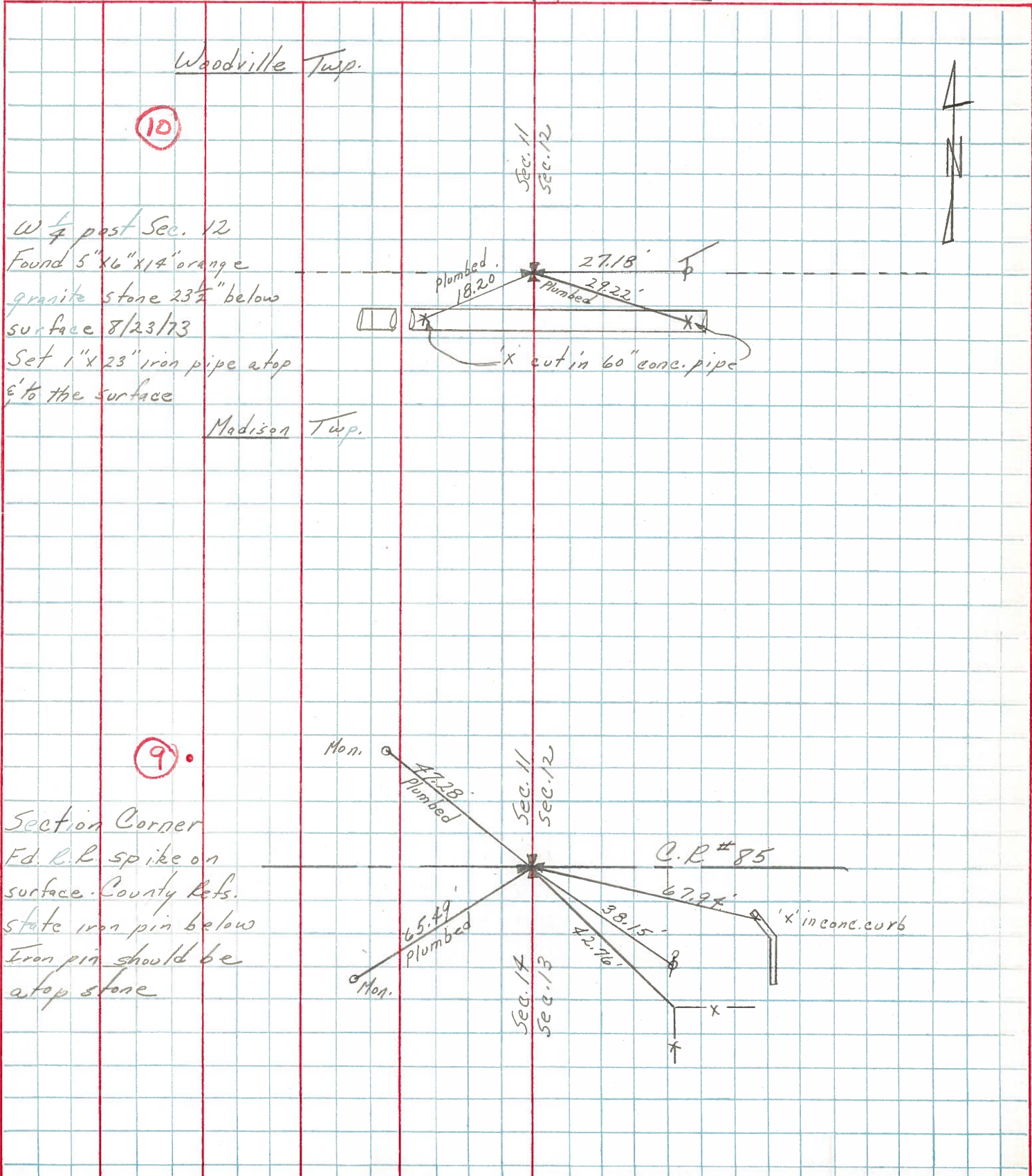
S. R. #300 WEATHER _____

SEC. U.S. #6 to U.S. #20 TEMP. _____

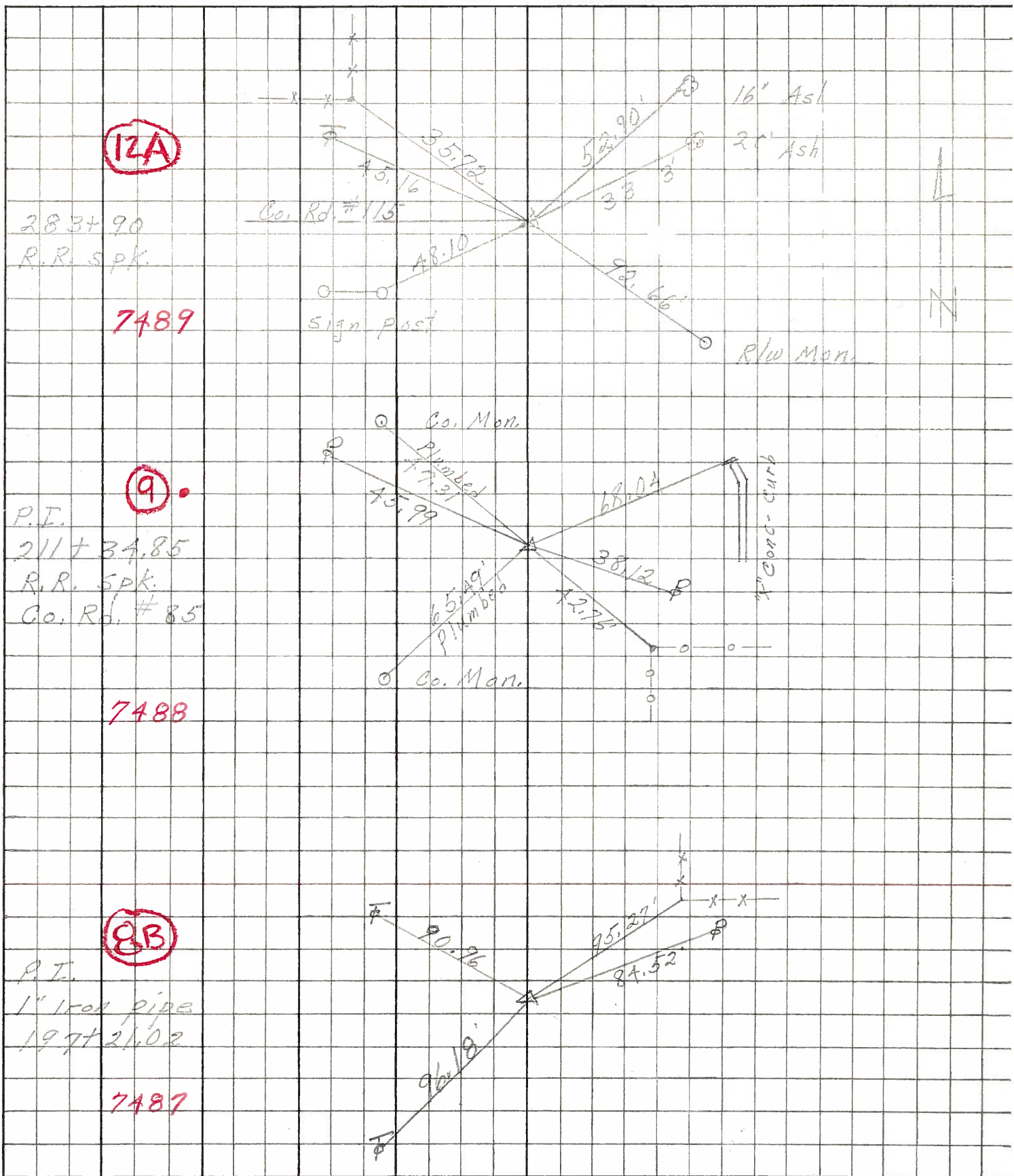
DESCRIPTION Ties for Control Points

JOB NO. _____

LEFT CENTER LINE RIGHT



PERSONNEL	TITLE	PERSONNEL	TITLE	COUNTY	DATE
<u>Schneider</u>		<u>Potts</u>		<u>Sandusky</u>	<u>4-18-68</u>
<u>Masser</u>				S. R.	WEATHER
<u>Barbour</u>				<u>300</u>	<u>Cloudy</u>
<u>Redding</u>				SEC. U.S. #6 to U.S. #20	TEMP.
					<u>60°</u>
DESCRIPTION	<u>Ties for Control Points</u>			JOB NO.	



12A

283+90
R.R. SPK.

7489

9

P.I.
211+34.85
R.R. SPK.
Co. Rd. #85

7488

8B

P.I.
1" iron pipe
197+21.02

7487