

O.D.O.T. DISTRICT 2 SURVEY OFFICE (USE ONLY)

PERSONNEL

REFERENCE NO. 9 A

SHEET 17 OF 22

NOTES NIESE

DATE 4/22/21

ROUTE SR 300

H.C. AUBLE

WEATHER CLOUDY/WINDY

COUNTY SANDUSKY

R.C. NIESE

TEMP. 37°

TOWNSHIP MADISON

SECTION 11

DWG BY NIESE PID CHIP SEAL

T 5 N R 13 E

TYPE MONUMENT MAG/WASHER

ON SURFACE - ~~BELOW~~ ON

OFFSET 7.0' LT : ~~RT~~

- TO - EDGE PAVEMENT

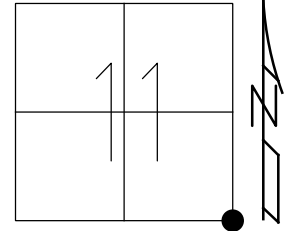
STATION: 211+93.35

HORZ.DATUM: NAD83(2011)

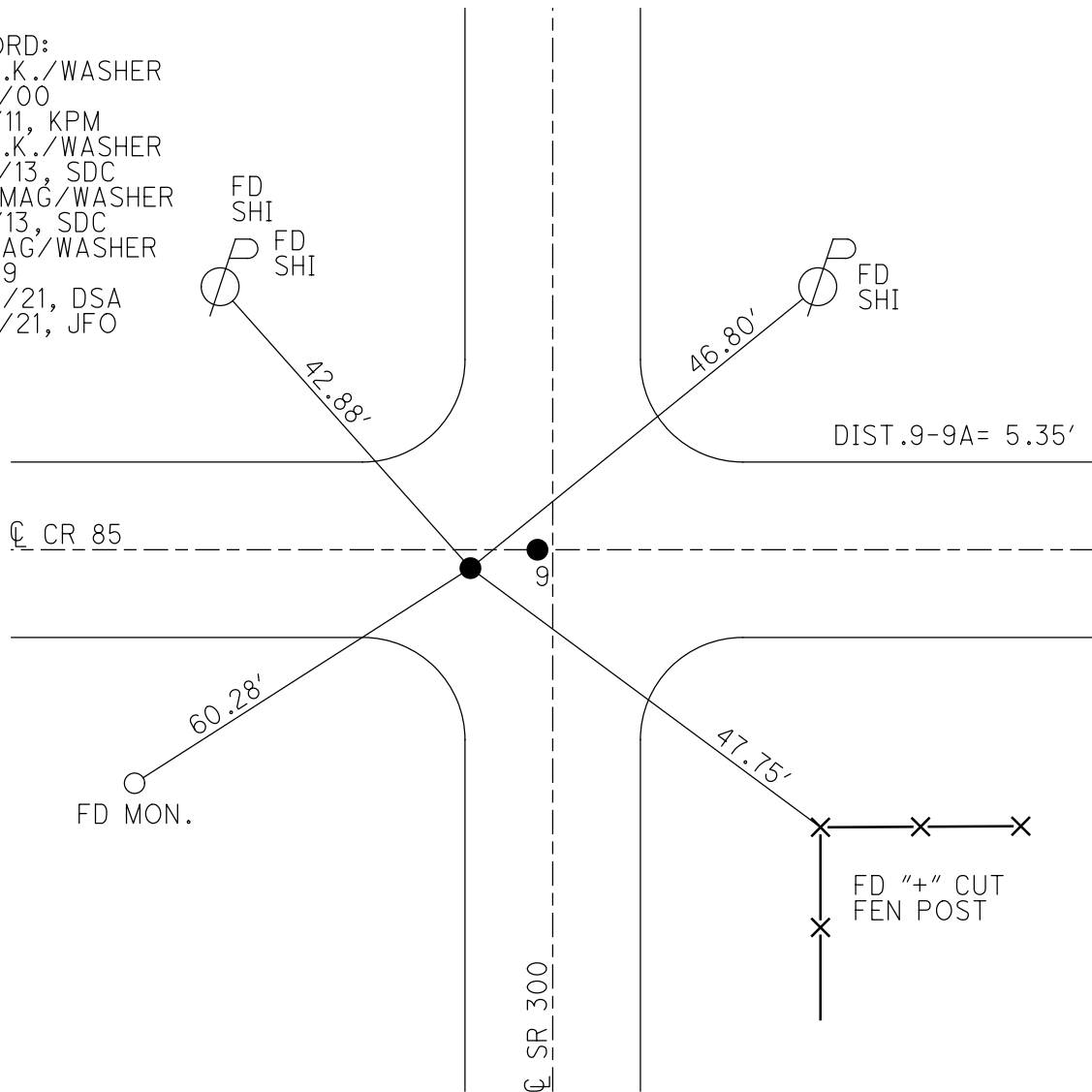
GEOID: 2018

GRID: NORTHING: 632217.592

EASTING: 1743650.128



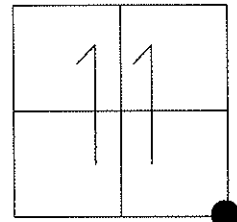
RECORD:
 FD P.K./WASHER
 5/10/00
 3/2/11, KPM
 FD P.K./WASHER
 4/16/13, SDC
 SET MAG/WASHER
 6/4/13, SDC
 FD MAG/WASHER
 REFA9
 4/22/21, DSA
 10/6/21, JFO



O.D.O.T. DISTRICT 2 SURVEY OFFICE (USE ONLY)

PERSONNEL _____ REFERENCE NO. 9 A SHEET 17 OF 22
 NOTES RHOADES DATE 4/16/13 ROUTE SR 300
 H.C. CODER WEATHER CLOUDY COUNTY SANDUSKY
 R.C. RHOADES TEMP. 56° TOWNSHIP MADISON
 _____ SECTION 11
 _____ T 5 N R 13 E

TYPE MONUMENT P.K./WASHER
 ON SURFACE - ~~BELOW~~ ON
 LEFT - ~~C PAV'T~~ - ~~RIGHT~~ 7.0'
 _____ TO _____ EDGE PAVEMENT
 S.L.M. 211+93.35

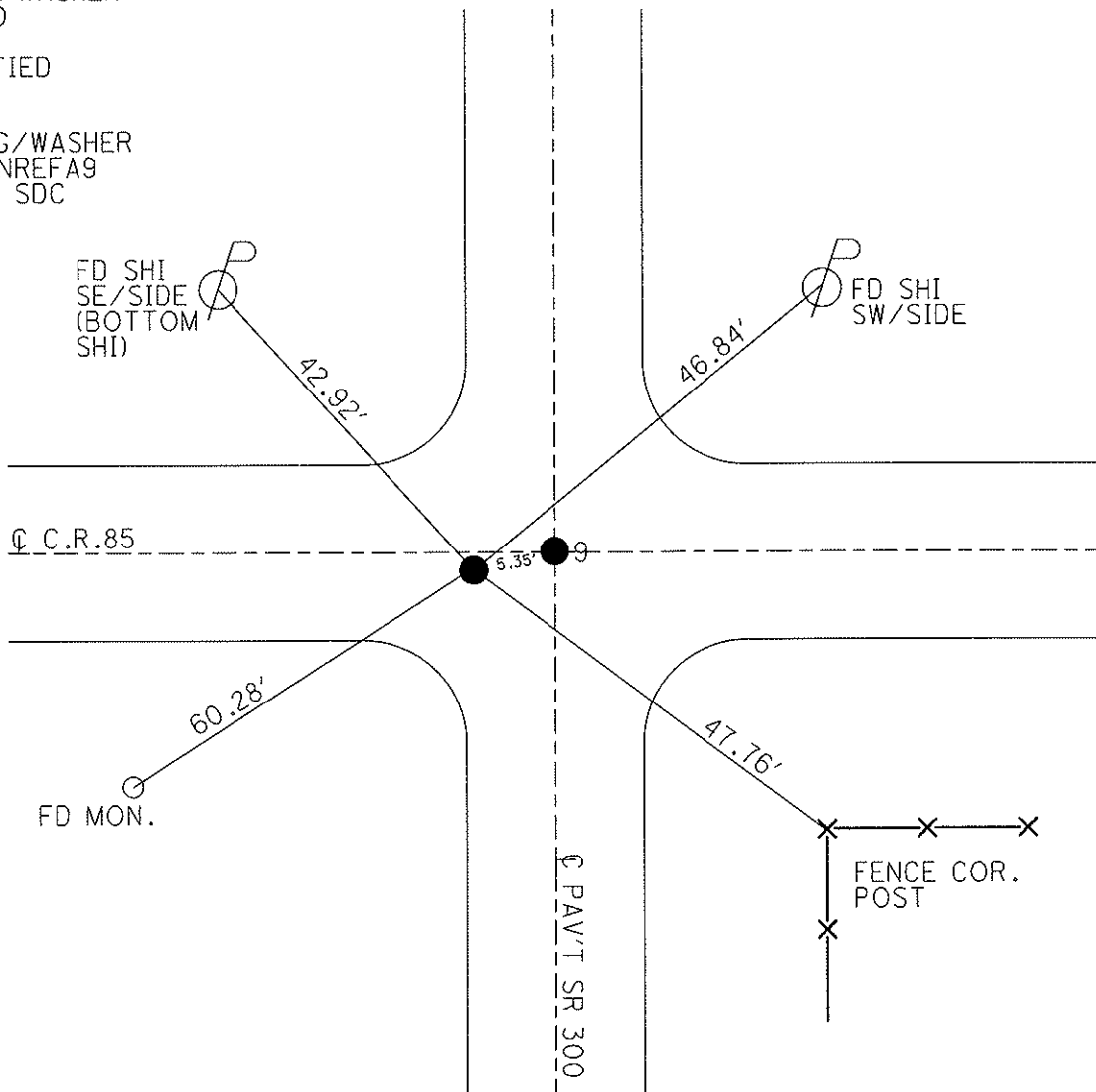


Grid: Northing: 632217.655 Easting: 1743650.075

FD P.K./WASHER
5/10/00

GPS & TIED
3-2-11

SET MAG/WASHER
GPS, FINREFA9
6/4/13, SDC



O.D.O.T. DISTRICT 2 SURVEY OFFICE

PERSONNEL

REFERENCE NO. 9

SHEET 12 OF 15

NOTES LOEHRKE

H.C. CANTERBURY

DATE 7-21-94

ROUTE S.R. # 300

R.C. HERMILLER

WEATHER NICE

COUNTY SANDUSKY

VOGEL

TEMP. + 80°

TOWNSHIP MADISON

SECTION 11, 12, 13, 14

T 5 N R 13 E

TYPE MONUMENT PK/WASHER

ON SURFACE - BELOW ON SURFACE

LEFT - & PAV'T. - RIGHT & of BOTH

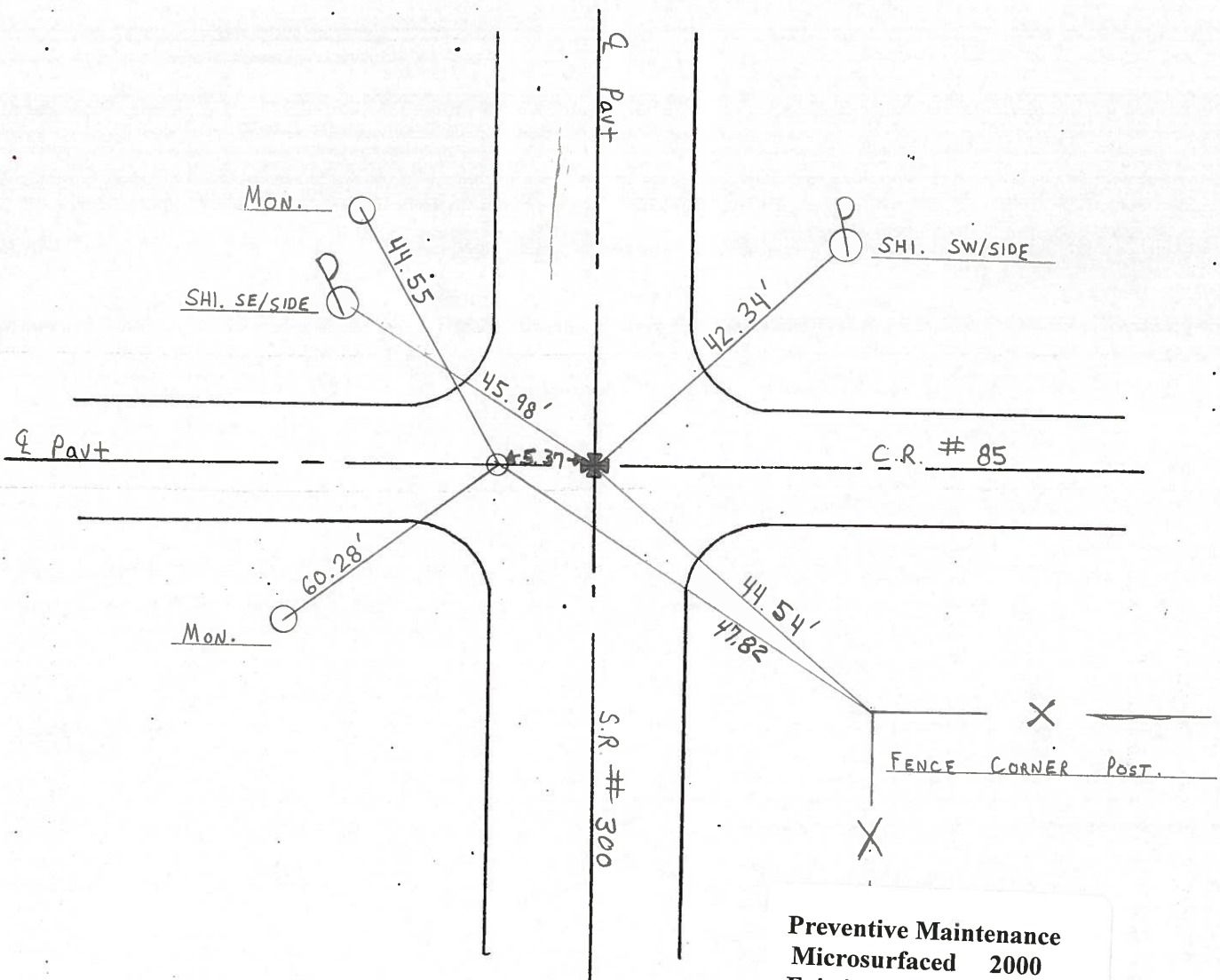
TO EDGE PAVEMENT

S.L.M. 211 + 91

11	12
14	13



Set P.K./washer
9-16-94 CAC



Preventive Maintenance
Microsurfaced 2000
Existing Point Uncovered
Date 5-10-2000