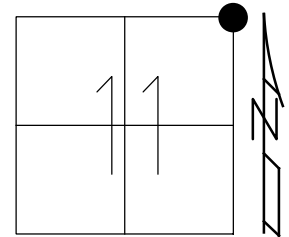


O.D.O.T. DISTRICT 2 SURVEY OFFICE (USE ONLY)

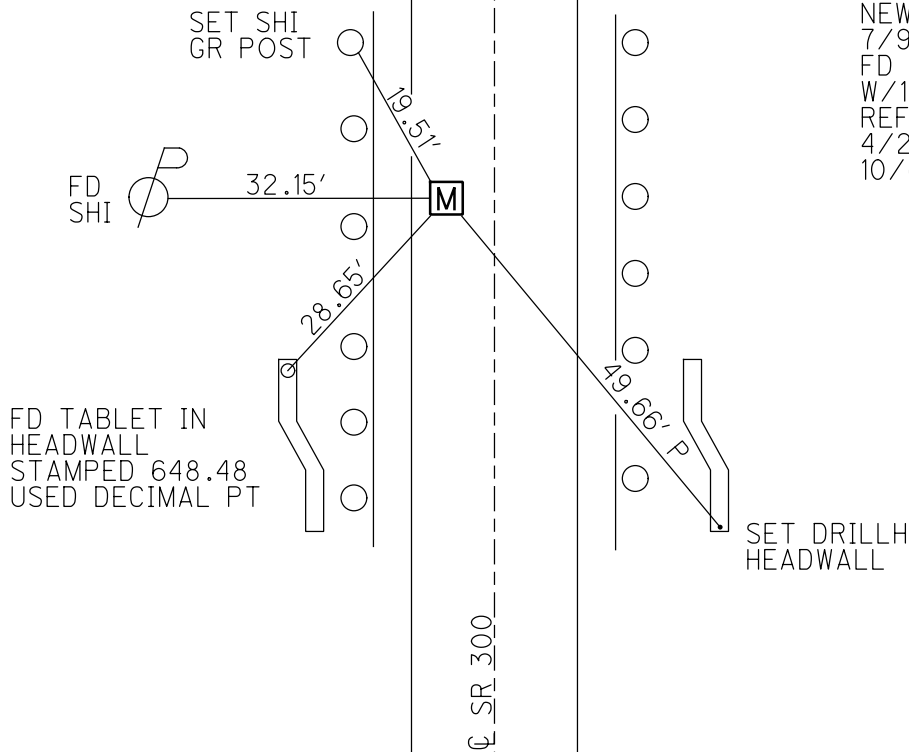
PERSONNEL _____ REFERENCE NO. 11 SHEET 19 OF 22
 NOTES NIESE DATE 4/22/21 ROUTE SR 300
 H.C. AUBLE WEATHER CLOUDY, WINDY COUNTY SANDUSKY
 R.C. NIESE TEMP. 42° TOWNSHIP WOODVILLE
 SECTION 11
 DWG BY RHOADES PID CHIP SEAL T 5 N R 13 E

TYPE MONUMENT MONBOX W/1" IPIN
 ON SURFACE - ~~BELOW~~ ON
 OFFSET CL PAVEMENT 7.7' LT : ~~RT~~
3.0' TO LT EDGE PAVEMENT
 STATION: 264+76



HORIZ.DATUM: NAD83 2011 GEOID: NAVD88 2018
 GRID: NORTHING: 637487.728 EASTING: 1743814.342

RECORD: 1984
 $\Delta = 0^\circ 22' 00''$ RT
 FD STONE 23" DOWN
 1973
 FD MONBOX
 5/10/00
 3-2-11, KPM
 FD MONBOX
 4/16/13, SDC
 SET MAG/WASHER
 FINREF11
 6/4/13, SDC
 MONBOX RESET
 NEWREF11
 7/9/13, SDC
 FD MONBOX
 W/1" IPIN
 REF11
 4/22/21, DSA
 10/6/21, JFO



O.D.O.T. DISTRICT 2 SURVEY OFFICE (USE ONLY)

PERSONNEL _____

REFERENCE NO. 11

SHEET 19 OF 22

NOTES RHOADES

DATE 4/16/13

ROUTE SR 300

H.C. CODER

WEATHER CLOUDY

COUNTY SANDUSKY

R.C. RHOADES

TEMP. 56°

TOWNSHIP WOODVILLE

SECTION 11

T 5 N R 13 E

TYPE MONUMENT MON. BOX

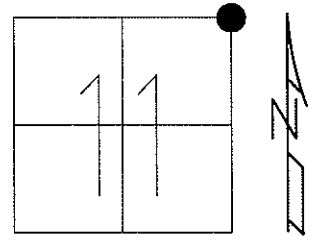
ON SURFACE - ~~BELOW~~ ON

LEFT - ☉ PAV'T - ~~RIGHT~~ 7.7'

3.0' TO LT EDGE PAVEMENT

S.L.M. 264+76

Grid: Northing: 637487.802 Easting: 1743814.226



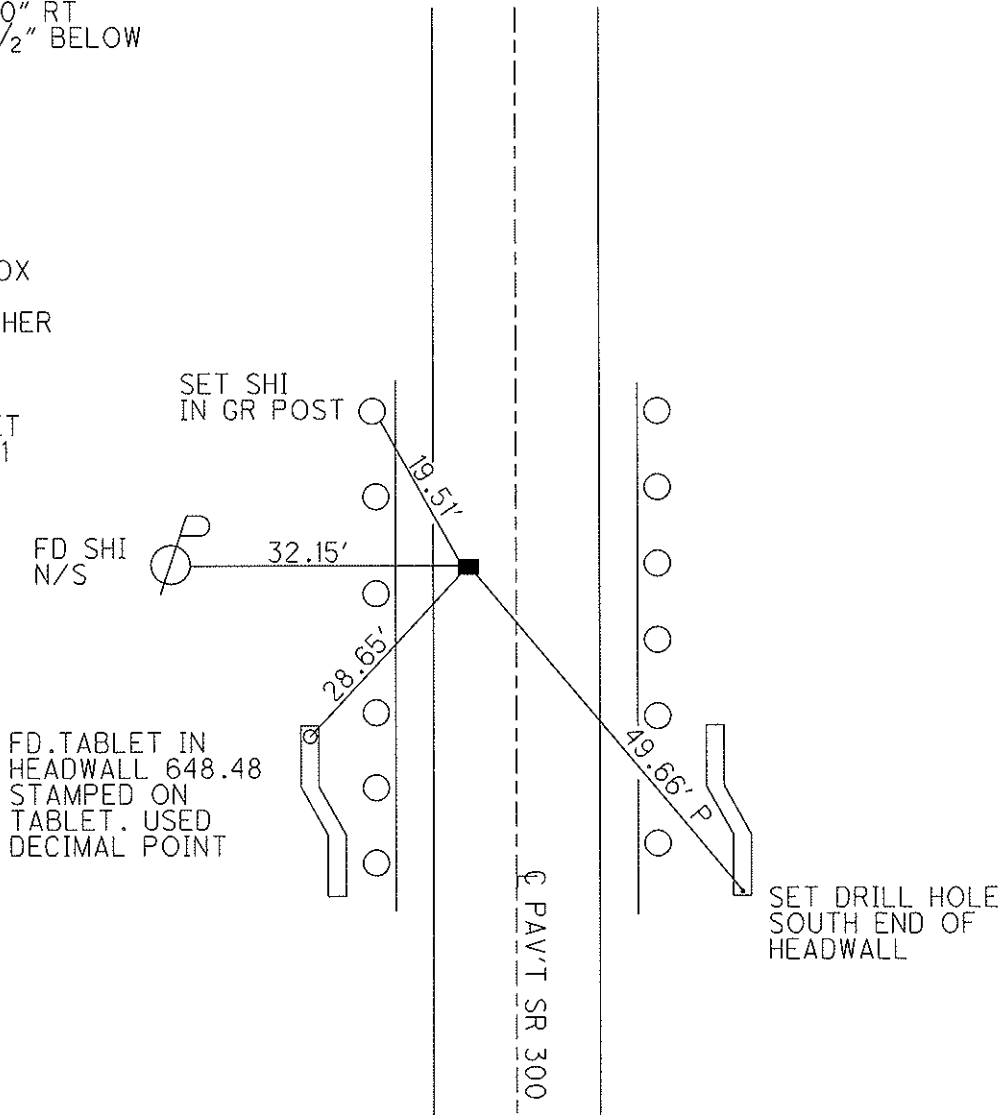
RECORD: 1984
 $\Delta = 0^\circ 22' 00''$ RT
 FD STONE $23\frac{1}{2}''$ BELOW
 SURFACE 1973

FD MON. BOX
 5/10/00

TIED & GPS
 3-2-11

NOTE: MON.BOX
 PAVED OVER
 SET MAG/WASHER
 GPS, FINREF11
 6/4/13, SDC

MONBOX RESET
 GPS, NEWREF11
 7/9/13, SDC



O.D.O.T. DISTRICT 2 SURVEY OFFICE

PERSONNEL

REFERENCE NO. 11

SHEET 14 OF 15

NOTES LOEHRKE

H.C. CANTERBURY

R.C. HERMILLER

VOGEL

DATE 7-21-94

WEATHER NICE

TEMP. +80°

ROUTE S.R. # 300

COUNTY SANDUSKY

TOWNSHIP Woodville

SECTION 11

T 5 N R 13 E

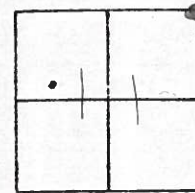
TYPE MONUMENT Mon Box

ON SURFACE - ~~BELOW~~ ON SURFACE

LEFT - ¢ PAV'T. - RIGHT 7.5' LT ¢

2.7' TO LT EDGE PAVEMENT

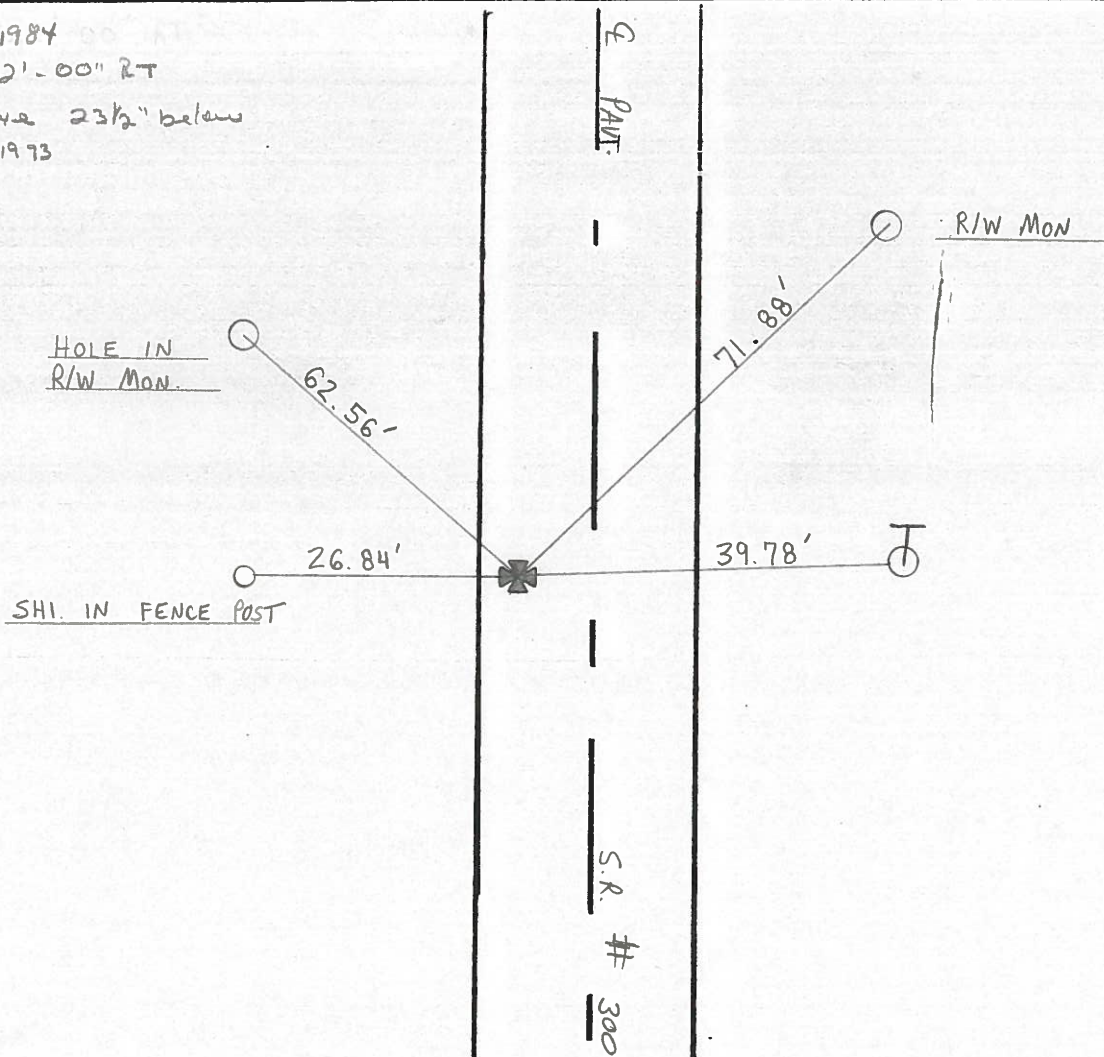
S.L.M. 264 + 76



Records: 1984

$\Delta = 00.22' - 00''$ RT

Fd stone 23 1/2" below surface 1973



Preventive Maintenance
 Microsurfaced 2000
 Existing Point Uncovered
 Date 5-10-2000

PERSONNEL TITLE PERSONNEL TITLE

Cronin
Ripple
Ceyman
Barbour

COUNTY Sandusky

DATE 4

S. R. #300

WEATHER 0

SEC. C. 1/4 - S. 1/4 - 0500

TEMP.

DESCRIPTION

Alignment

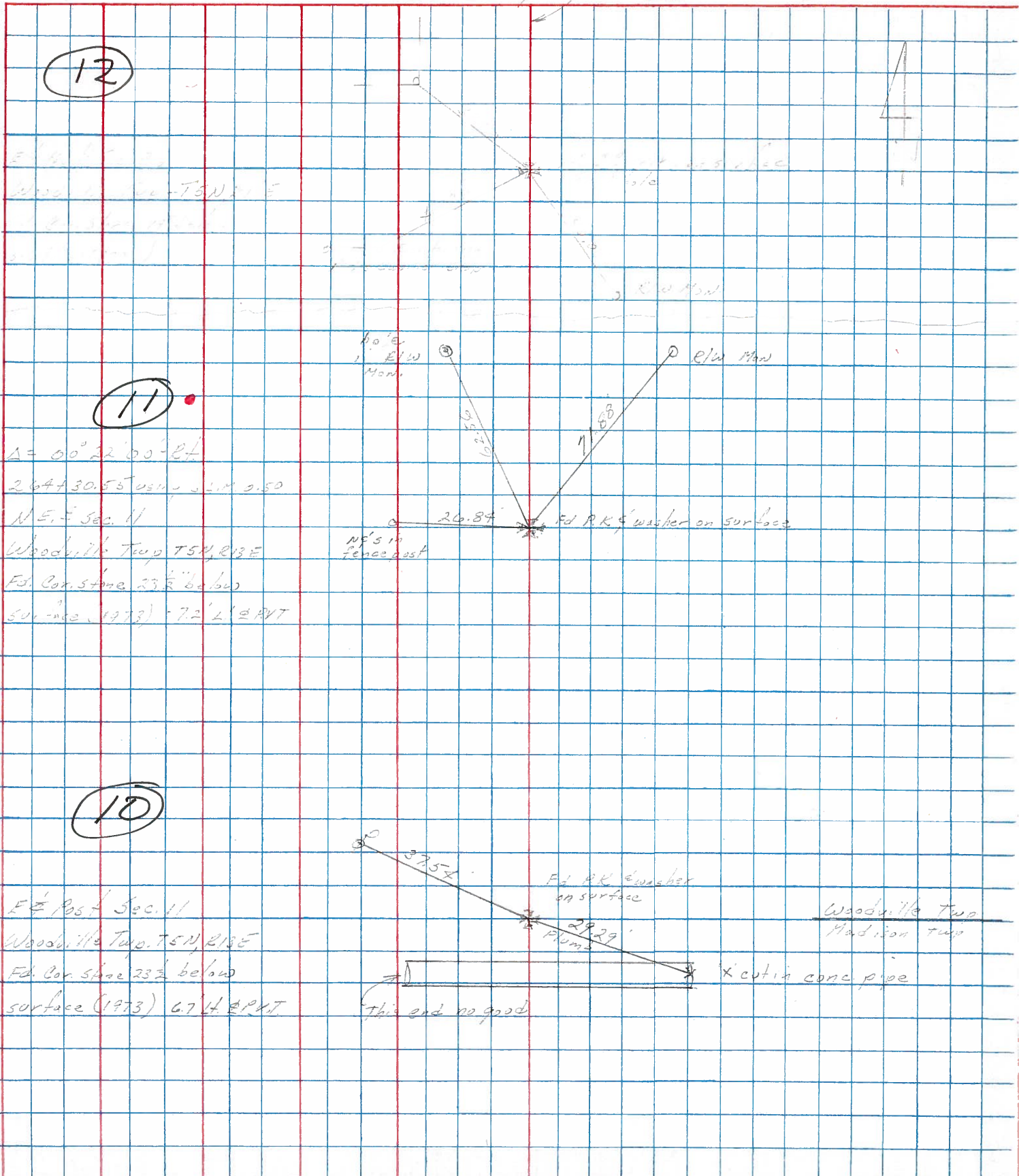
LEFT

CENTER LINE

21.7

RIGHT

JOB NO.



PERSONNEL	TITLE	PERSONNEL	TITLE
Cronin		Schneider	
Ash		Mosser	
Ripple		Barbour	
		Geyman	

COUNTY Sandusky DATE Drawn 11/13/73

S. R. # 300 WEATHER

SEC. U.S. #6 to U.S. #20 TEMP.

DESCRIPTION Ties for Control Points JOB NO.

