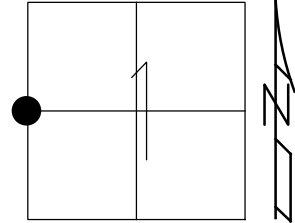


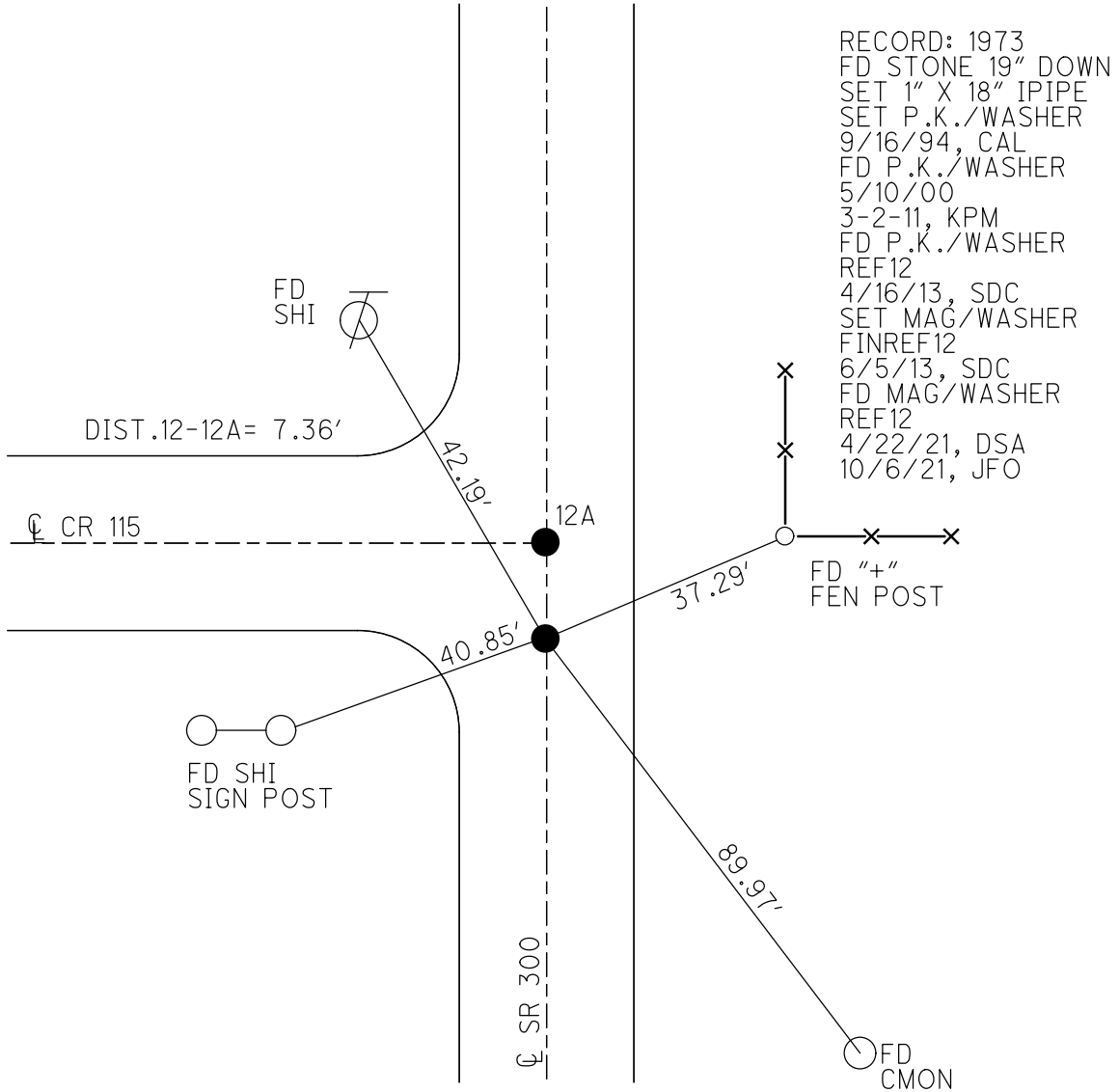
O.D.O.T. DISTRICT 2 SURVEY OFFICE (USE ONLY)

PERSONNEL _____ REFERENCE NO. 12 SHEET 20 OF 22
 NOTES NIESH DATE 4/22/21 ROUTE SR 300
 H.C. AUBLE WEATHER CLOUDY, WINDY COUNTY SUNDUSKY
 R.C. NIESH TEMP. 42° TOWNSHIP WOODVILLE
 SECTION 1
 DWG BY RHOADES PID CHIP SEAL T 5 N R 13 E

TYPE MONUMENT MAG/WASHER
 ON SURFACE - ~~BELOW~~ ON
 OFFSET Q PAVEMENT 5.5' LT : ~~RT~~
15.0' TO RT EDGE PAVEMENT
 STATION: 291+25



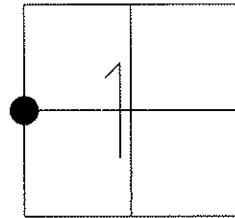
HORIZ.DATUM: NAD83 2011 GEOID: NAVD88 2018
 GRID: NORTHING: 640127.055 EASTING: 1743911.651



O.D.O.T. DISTRICT 2 SURVEY OFFICE (USE ONLY)

PERSONNEL	REFERENCE NO. <u>12</u>	SHEET <u>20</u> OF <u>22</u>
NOTES	DATE <u>4/16/13</u>	ROUTE <u>SR 300</u>
H.C. <u>RHOADES</u>	WEATHER <u>CLOUDY</u>	COUNTY <u>SANDUSKY</u>
R.C. <u>RHOADES</u>	TEMP. <u>56°</u>	TOWNSHIP <u>WOODVILLE</u>
		SECTION <u>1</u>
		T <u>5</u> N R <u>13</u> E

TYPE MONUMENT P.K./WASHER
 ON SURFACE - ~~BELOW~~ ON
 LEFT - ~~Q PAV'T~~ = RIGHT 5.5'
15.0' TO RT. EDGE PAVEMENT
 S.L.M. 291+25



Grid: Northing: 640127.142 Easting: 1743911.601

RECORD: 1973
 FD STONE 19" BELOW
 SURFACE. SET 1" X 18 1/2"
 IRON PIPE TO SURFACE.
 W 1/4 POST SEC.1

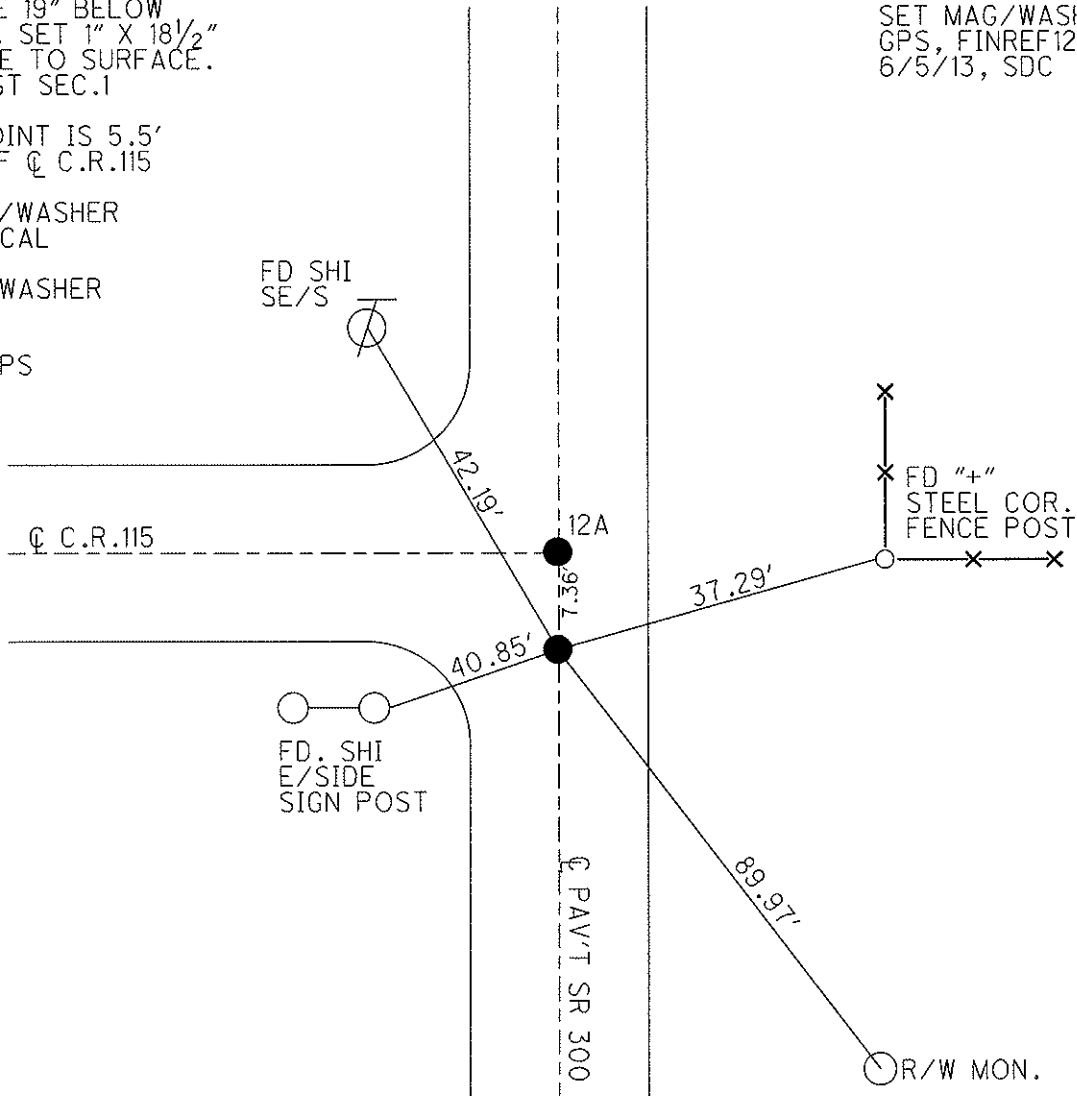
NOTE: POINT IS 5.5'
 SOUTH OF Q C.R.115

SET P.K./WASHER
 9/16/94 CAL

FD P.K./WASHER
 5/10/00

TIED & GPS
 3-2-11

SET MAG/WASHER
 GPS, FINREF12
 6/5/13, SDC



O.D.O.T. DISTRICT 2 SURVEY OFFICE

PERSONNEL

REFERENCE NO. 12

SHEET 15 OF 15

NOTES LOEHRKE

H.C. CANTERBURY

R.C. HERMILLER

VOGEL

DATE 7-21-94

WEATHER NICE

TEMP. +80°

ROUTE S.R. # 300

COUNTY SANDUSKY

TOWNSHIP Woodville

SECTION 1, 2

T 5 N R 13 E

TYPE MONUMENT PK/WASHER

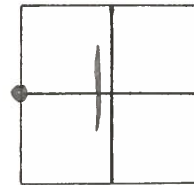
ON SURFACE - BELOW ON SURFACE

LEFT - ☉ PAV'T. - RIGHT ON ☉ PAVT

TO EDGE PAVEMENT

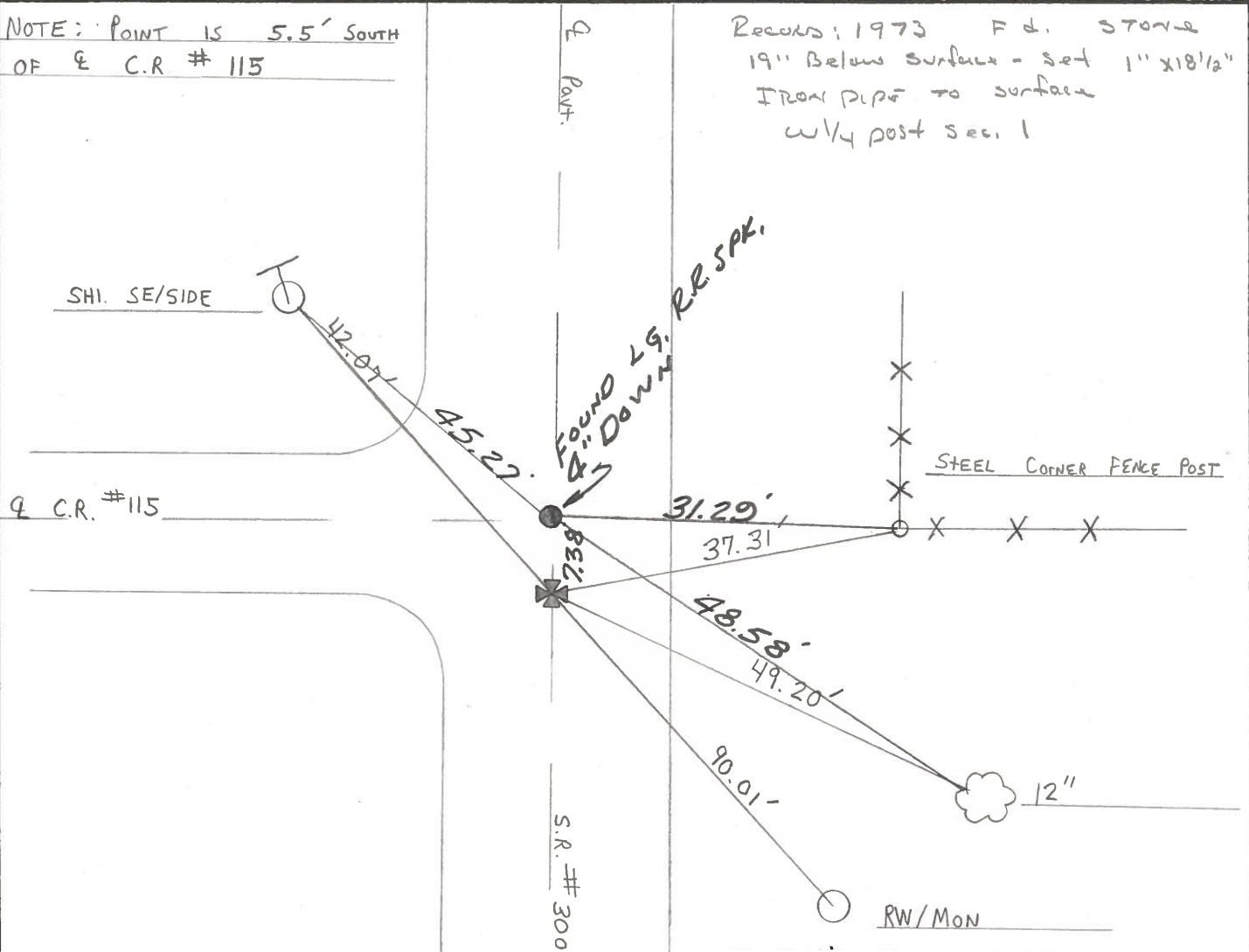
S.L.M. 291 + 25

Set P.K./washer
9-16-94
CAL.



NOTE: POINT IS 5.5' SOUTH OF ☉ C.R. # 115

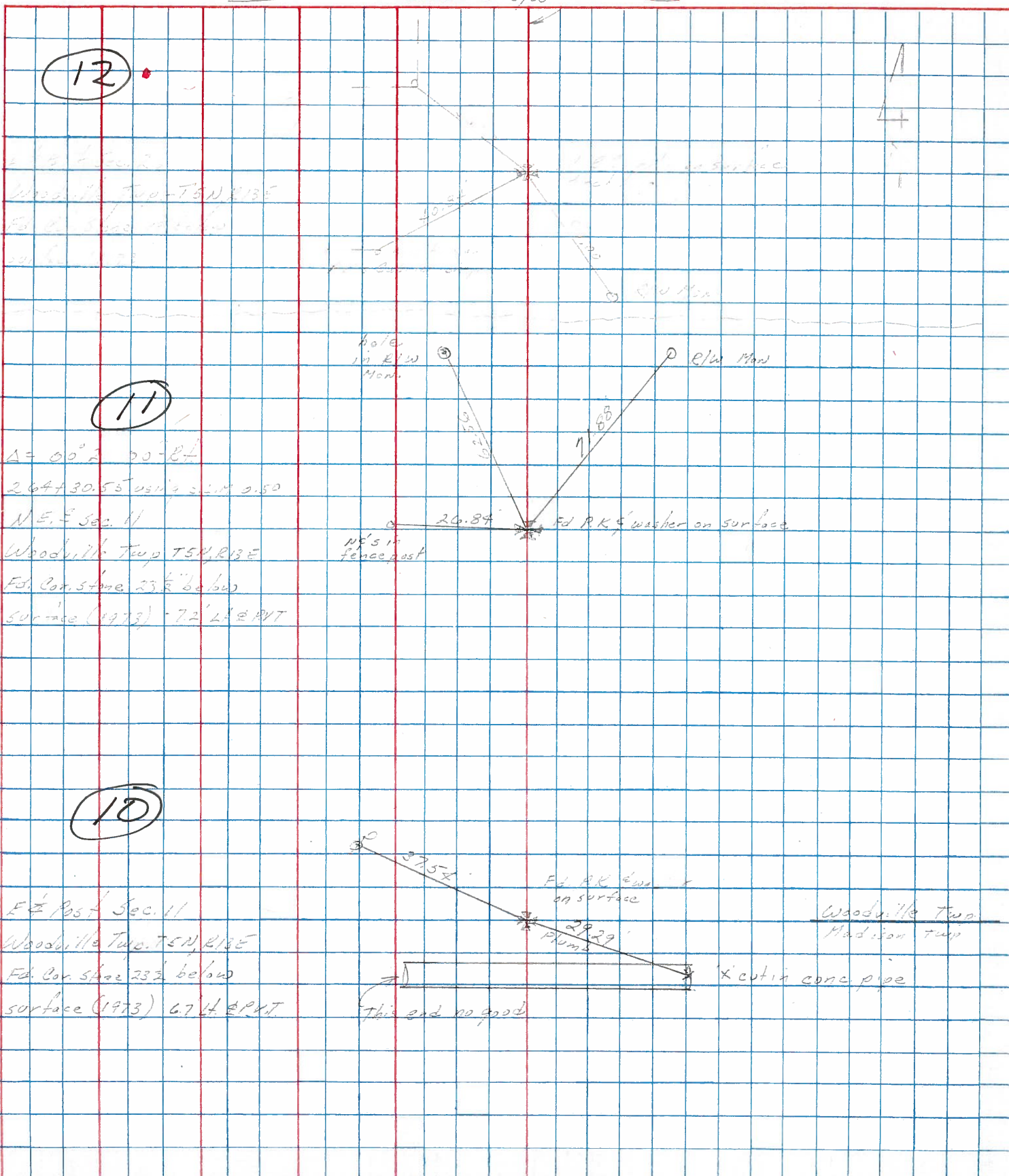
Records: 1973 F.d. 3707-2
19" Below surface - set 1" x 18 1/2" IRON PIPE TO SURFACE w/ 1/4 post sec. 1



Preventive Maintenance
Microsurfaced 2000
Existing Point Uncovered
Date 5-10-2000

PERSONNEL	TITLE	PERSONNEL	TITLE	COUNTY	DATE
Cronin				Sandusky	1/6/84
Ripple				#300	WEATHER overcast
Geyman				SEC. Culp. - S.L.M. 0500	TEMP. 47°
Barbour					

DESCRIPTION Alignment LEFT CENTER LINE 2/w RIGHT JOB NO.



PERSONNEL	TITLE	PERSONNEL	TITLE	COUNTY	DATE
Cronin		Schneider		Sandusky	Drawn 11/13/73
Ash		Mosser		S. # 300	WEATHER
Ripple		Barbour		SEC. U.S. #6 to U.S. #20	TEMP.
		Geyman			JOB NO.

DESCRIPTION Ties for Control Points

