

O.D.O.T. DISTRICT 2 SURVEY OFFICE (USE ONLY)

PERSONNEL _____ REFERENCE NO. 12 A SHEET 21 OF 22
 NOTES NIESH DATE 4/22/21 ROUTE SR 300
 H.C. AUBLE WEATHER CLOUDY, WINDY COUNTY SANDUSKY
 R.C. NIESE TEMP. 42° TOWNSHIP WOODVILLE
 _____ SECTION 1
 DWG BY RHOADES PID CHIP SEAL T 5 N R 13 E

TYPE MONUMENT MAG/WASHER

ON SURFACE - ~~BELOW~~ ON

OFFSET ☉ PAVEMENT ON LT : RT

10.5' TO RT EDGE PAVEMENT

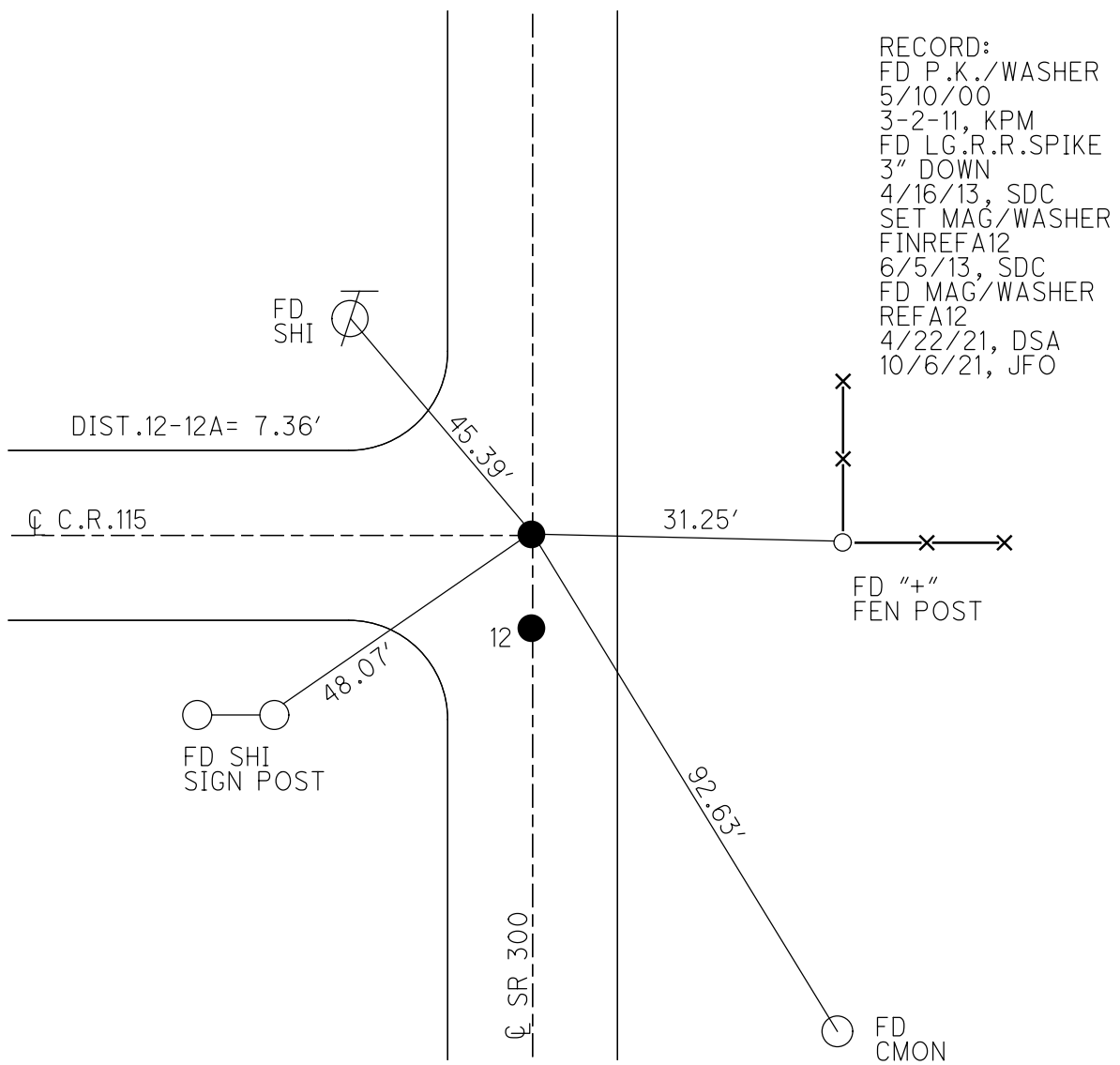
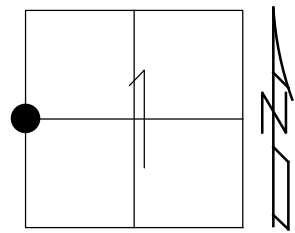
STATION: 291+32

HORIZ.DATUM: NAD83 2011

GEOID: NAVD88 2018

GRID: NORTHING: 640131.732

EASTING: 1743917.333



O.D.O.T. DISTRICT 2 SURVEY OFFICE (USE ONLY)

PERSONNEL _____

REFERENCE NO. 12 A

SHEET 21 OF 22

NOTES RHOADES

DATE 4/16/13

ROUTE SR 300

H.C. CODER

WEATHER CLOUDY

COUNTY SANDUSKY

R.C. RHOADES

TEMP. 56°

TOWNSHIP WOODVILLE

SECTION 1

T 5 N R 13 E

TYPE MONUMENT LG. R.R. SPIKE

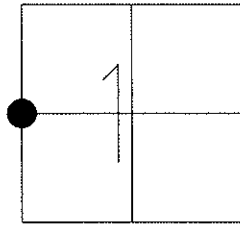
~~ON SURFACE~~ - BELOW 3"

LEFT - Q PAV'T - RIGHT ON

10.5' TO RT. EDGE PAVEMENT

S.L.M. 291+32

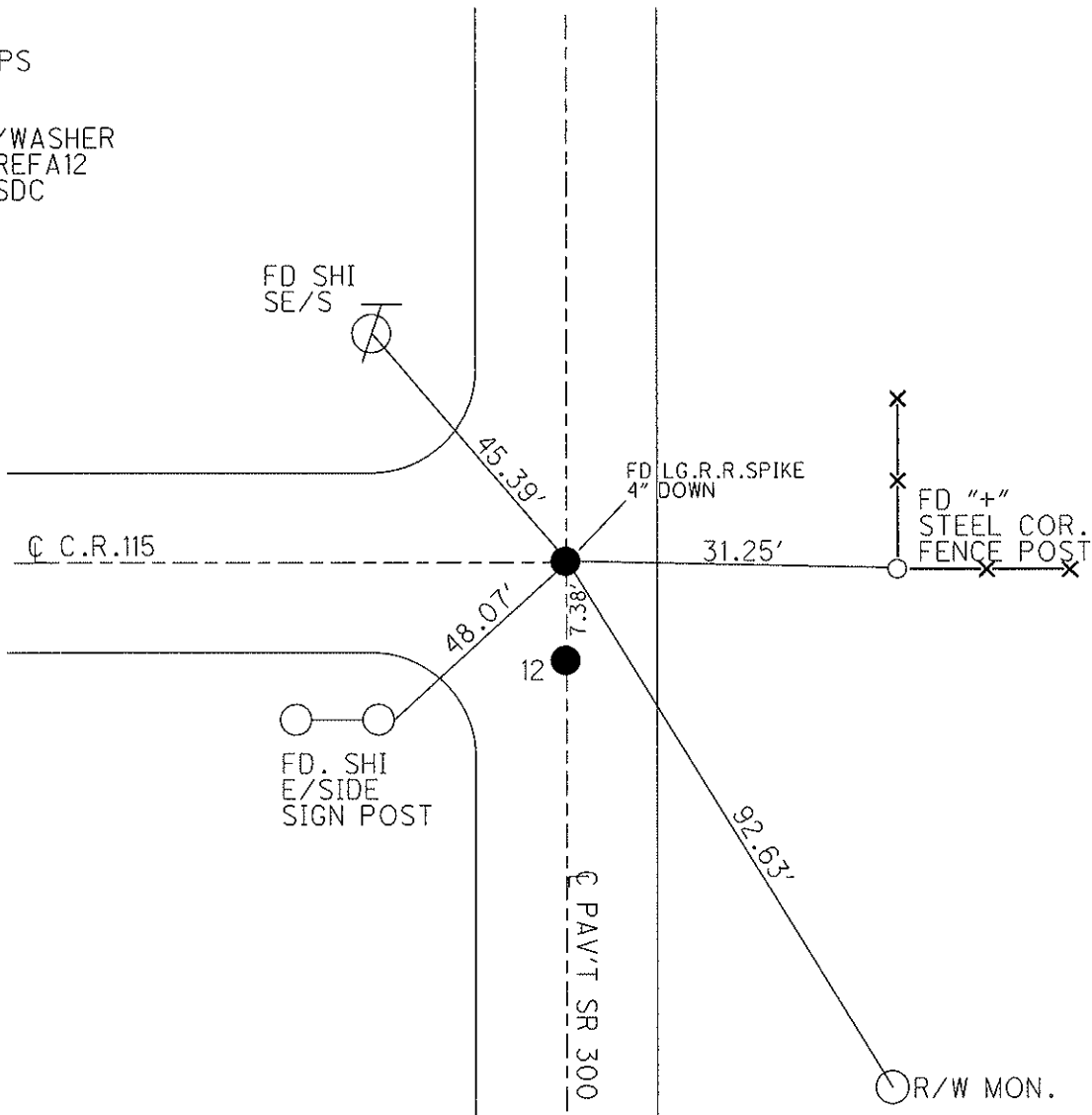
Grid: Northing: 640131.814 Easting: 1743917.329



FD P.K./WASHER
5/10/00

TIED & GPS
3-2-11

SET MAG/WASHER
GPS, FINREFA12
6/5/13, SDC



O.D.O.T. DISTRICT 2 SURVEY OFFICE

PERSONNEL

REFERENCE NO. 12

SHEET 17 OF 17

NOTES LOEHRKE

DATE 7/21/94

ROUTE SR 300

H.C. CANTERBURY

WEATHER NICE

COUNTY SANDUSKY

R.C. HERMILLER

TEMP. 80°

TOWNSHIP WOODVILLE

VOGEL

SECTION 1, 2

T 5 N R 13 E

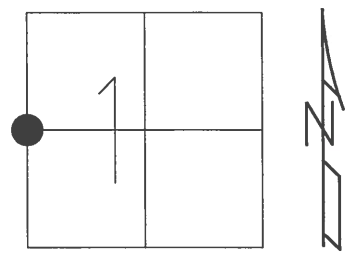
TYPE MONUMENT P.K./WASHER

ON SURFACE - ~~BELOW~~ ON

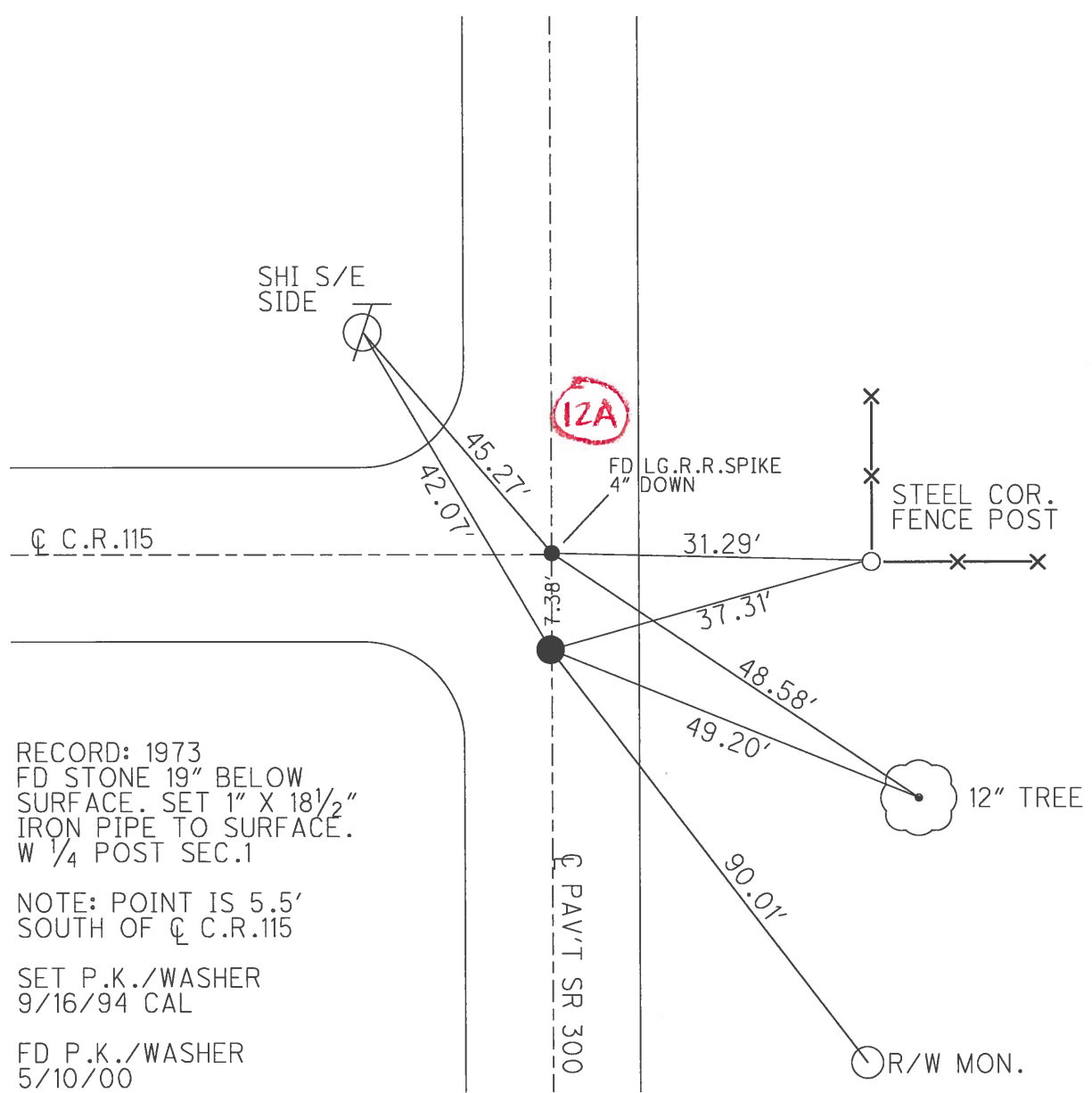
LEFT - C PAV'T - RIGHT ON

TO EDGE PAVEMENT

S.L.M. 291+25



Grid: Northing: _____ Easting: _____



RECORD: 1973
 FD STONE 19" BELOW
 SURFACE. SET 1" X 18 1/2"
 IRON PIPE TO SURFACE.
 W 1/4 POST SEC.1

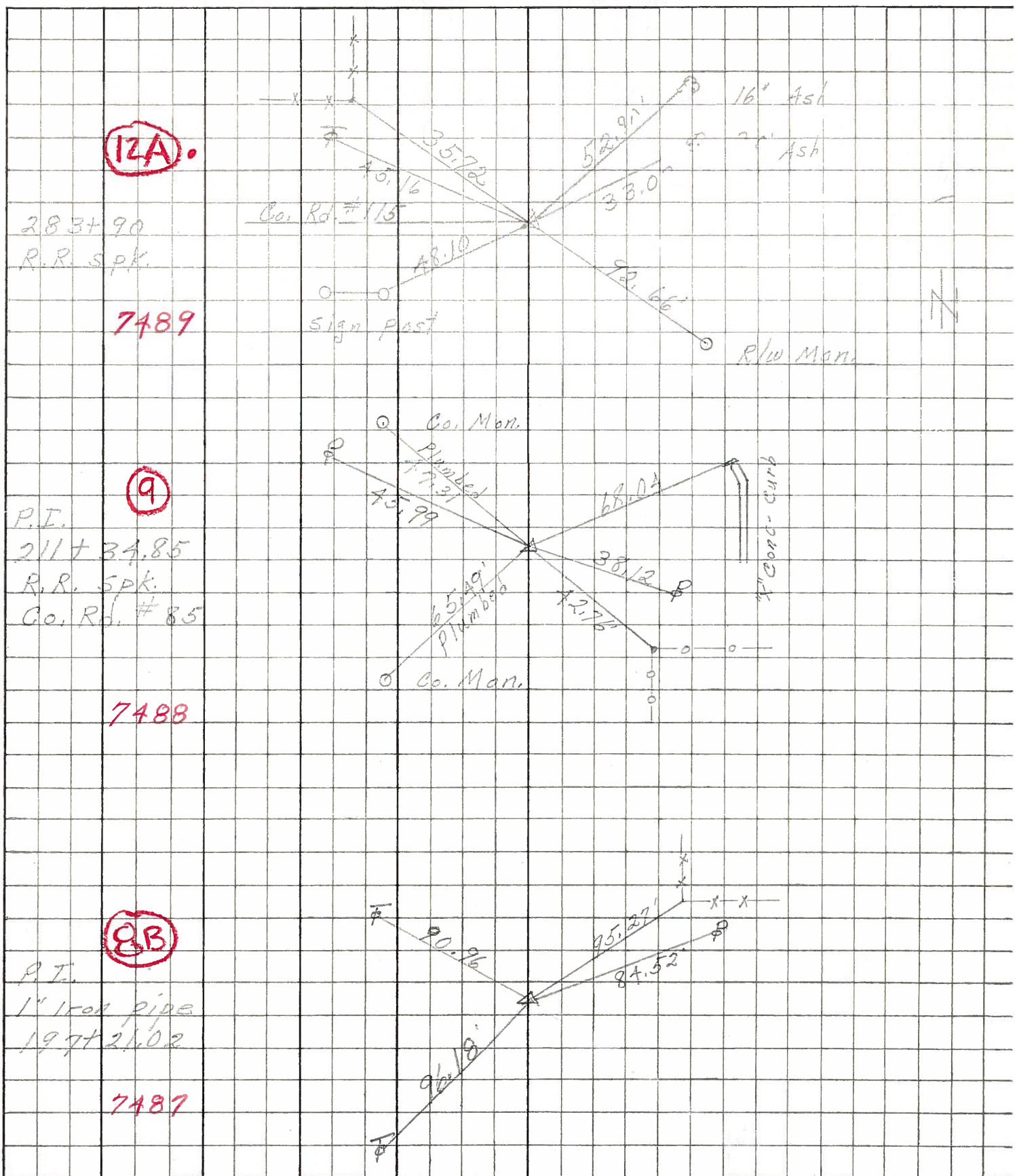
NOTE: POINT IS 5.5'
 SOUTH OF C C.R.115

SET P.K./WASHER
 9/16/94 CAL

FD P.K./WASHER
 5/10/00

PERSONNEL	TITLE	PERSONNEL	TITLE	COUNTY	DATE
Schneider		Potts		Sandusky	4-18-68
Mosser				S. R. 300	WEATHER Cloudy
Barbour				SEC. U.S. #6 to U.S. #20	TEMP. 60°
Redding					

DESCRIPTION Ties for Control Points JOB NO. _____



12A

283+90
R.R. Spk.

7489

9

P.T.
211+34.85
R.R. Spk.
Co. Rd. #85

7488

8B

P.T.
1" Iron pipe
197+21.02

7487