

O.D.O.T. DISTRICT 2 SURVEY OFFICE (USE ONLY)

PERSONNEL

REFERENCE NO. 14

SHEET 22 OF 22

NOTES HARBAUGH

DATE 7/6/11

ROUTE SR 300

H.C. MOSER

WEATHER CLOUDY

COUNTY SANDUSKY

R.C. FINGER

TEMP. 89°

TOWNSHIP WOODVILLE

SECTION 35

T 5 N R 13 E

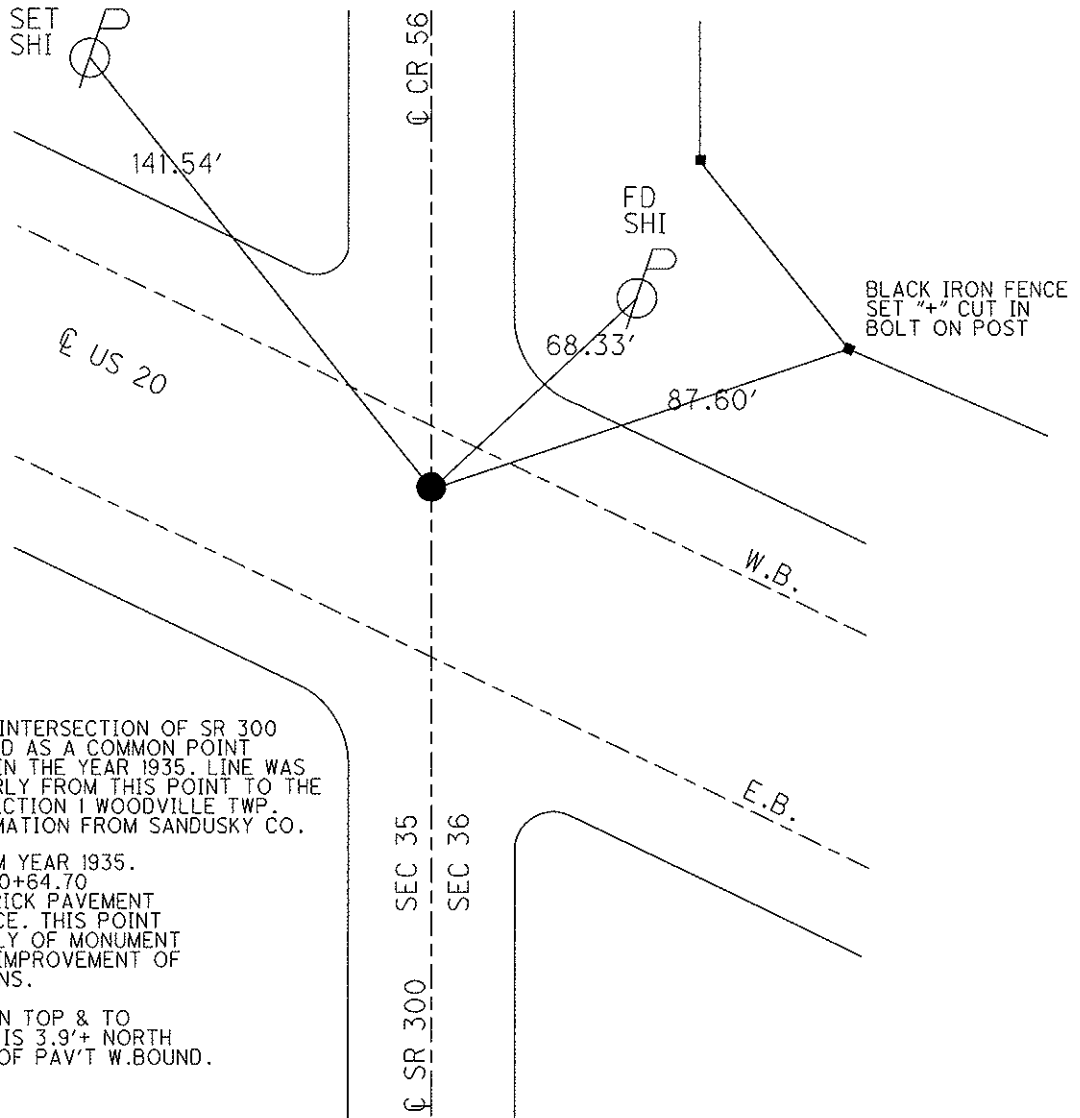
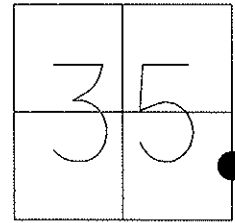
TYPE MONUMENT MON.BOX

ON SURFACE - ~~BELOW~~ ON

~~LEFT~~ - Q PAV'T - RIGHT 8.8', WB LANE
 - TO - EDGE PAVEMENT

S.L.M. (334+22.4)

Grid: Northing: 644416.204 Easting: 1744048.091



NOTE: REF 7
ON US 20

GPS, REF7
6/16/11, KPM

NOTE: POINT AT INTERSECTION OF SR 300 & US 20 WAS USED AS A COMMON POINT NORTH & SOUTH IN THE YEAR 1935. LINE WAS RUNNING SOUTHERLY FROM THIS POINT TO THE W 1/4 POST OF SECTION 1 WOODVILLE TWP. T5N,R13E. INFORMATION FROM SANDUSKY CO.

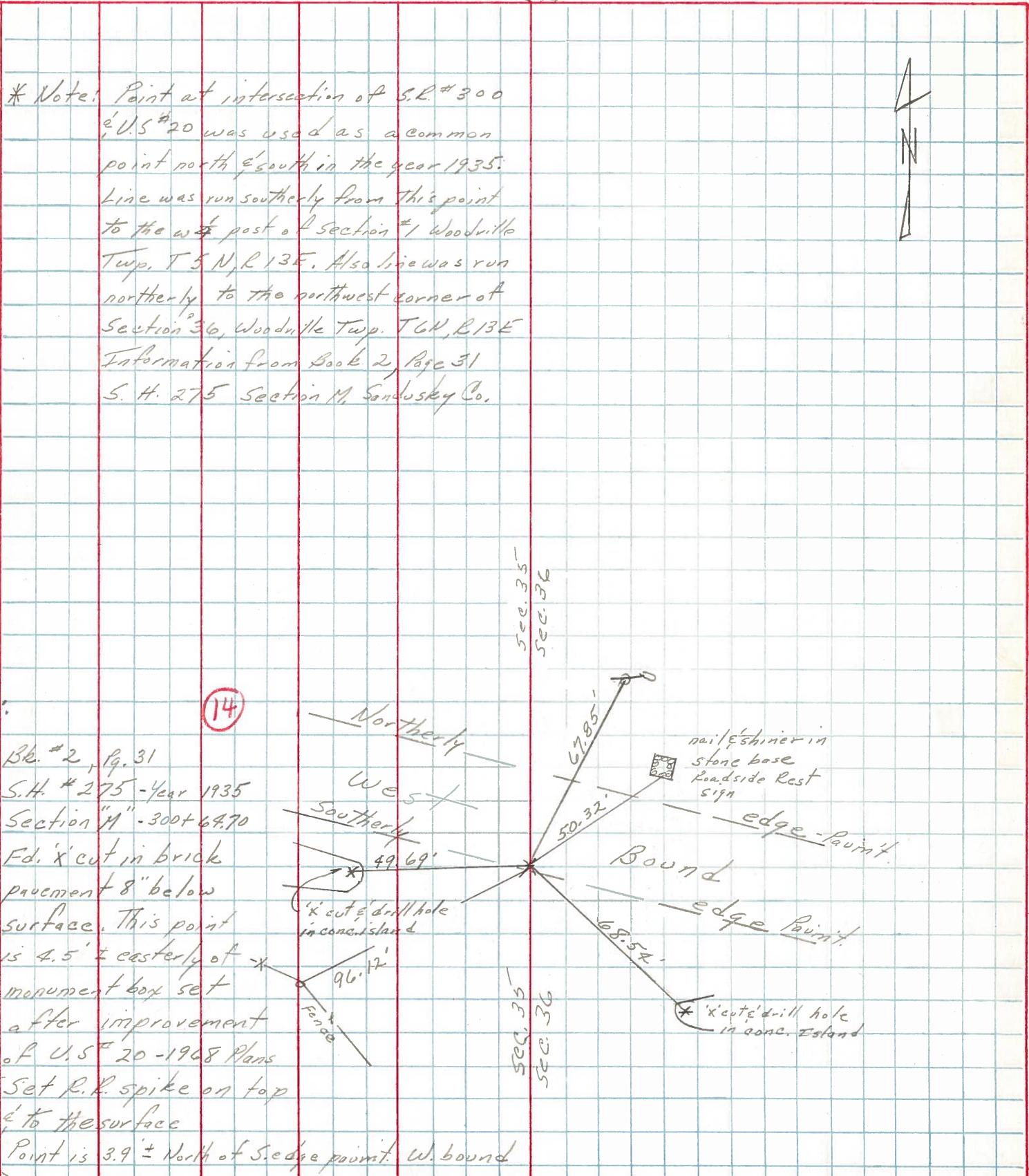
NOTE: INFO FROM YEAR 1935.
SECTION "M"- 300+64.70
FD "X" CUT IN BRICK PAVEMENT
8" BELOW SURFACE. THIS POINT
IS 4.5'+ EASTERLY OF MONUMENT
BOX SET AFTER IMPROVEMENT OF
US 20- 1968 PLANS.

SET R.R.SPIKE ON TOP & TO
SURFACE. POINT IS 3.9'+ NORTH
OF SOUTH EDGE OF PAV'T W.BOUND.

PERSONNEL TITLE PERSONNEL TITLE
 Cronin _____
 Ash _____
 Ripple _____

COUNTY Sandusky DATE Drawn 11/19/73
 S. R. # 300 WEATHER _____
 SEC. U.S. # 6 to US # 20 TEMP. _____

DESCRIPTION Ties for Control Points LEFT CENTER LINE → R/W RIGHT JOB NO. _____



* Note: Point at intersection of S.R. # 300 & U.S. # 20 was used as a common point north & south in the year 1935. Line was run southerly from this point to the west post of Section # 1 Woodville Twp. T 5 N, R 13 E. Also line was run northerly to the northwest corner of Section # 36, Woodville Twp. T 6 N, R 13 E Information from Book 2, Page 31 S. H. 275 Section M, Sandusky Co.

NOTE: (14)
 Blk. # 2, Pg. 31
 S.H. # 275 - Year 1935
 Section "M" - 300 + 67.70
 Ed. 'x' cut in brick pavement 8" below surface. This point is 4.5' ± easterly of 'x' monument box set after improvement of U.S. # 20 - 1968 Plans
 Set R.R. spike on top & to the surface
 Point is 3.9' ± North of S edge point. W. bound

