

760

5010

760

1/5

I. C. H. No. 281 Sec. 0
Sandusky County

INDEX OF SHEETS

Sheet No. 1	Title Page
Sheet No. 2	Plan and Profile Sta. 0 to Sta. 60.
Sheet No. 3	" " " " " 55 " " 68.
Sheet No. 3	Typical Cross-section of Improvement
Sheet No. 4 & 5	Cross-sections

STATE HIGHWAY DEPARTMENT OF OHIO
BUREAU OF CONSTRUCTION

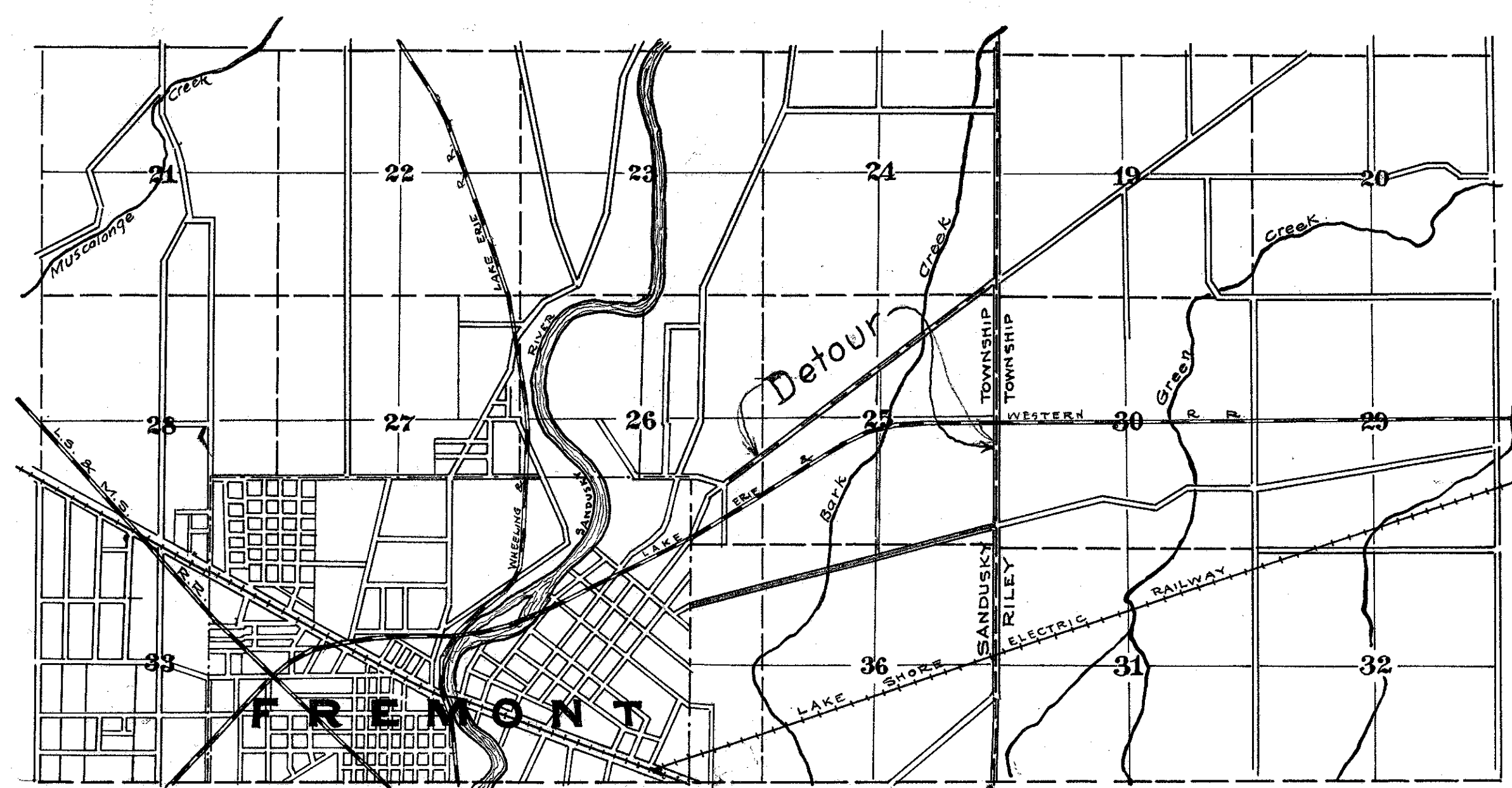
SEC. 0 - FREMONT - CASTALIA ROAD

I.C.H. 281. PET. 2896

SANDUSKY COUNTY

SANDUSKY TOWNSHIP MAY 1917

File # 107



CONVENTIONAL SIGNS

Towship Line	-----
Section Line	-----
Center Line	-----
City Line	-----
Wire Fence	-----
Telephone Line	T T T
Steam Railroad	-----
Electric Line	-----
Tree	-----

LOCATION PLAN
Scale 2" = 1 mile
PORTION TO BE IMPROVED

SCALES

Plan	1" = 100'
Profile (Vertical)	1" = 10'
Profile (Horizontal)	1" = 100'
Cross-sections	1" = 5'

I hereby approve these plans and declare that the making of the improvement will require the closing of the highway to traffic and that the detours will be indicated by signs as shown on the plans and in the estimate.

Approved E. M. Millions
Date June 8, 1917 County Surveyor



Approved E. Blosser
Date July 14 1917 Division Engineer
Approved N. D. Penning
Date _____ Chief Highway Engineer
Approved London Conrad
Date _____ State Highway Commissioner

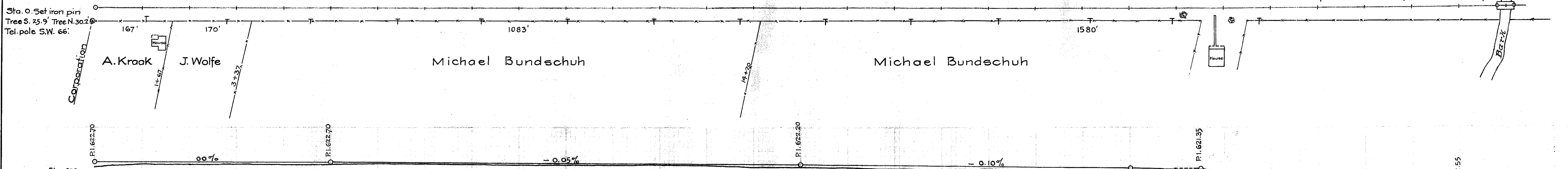
We the Commissioners of Sandusky County hereby approve these plans and certify that the right of way is available for the construction of the above highway.

Signed Chas. D. Kenan
Geo. W. Thompson
John D. Wolfe
Date June 8, 1917 County Commissioners

1342

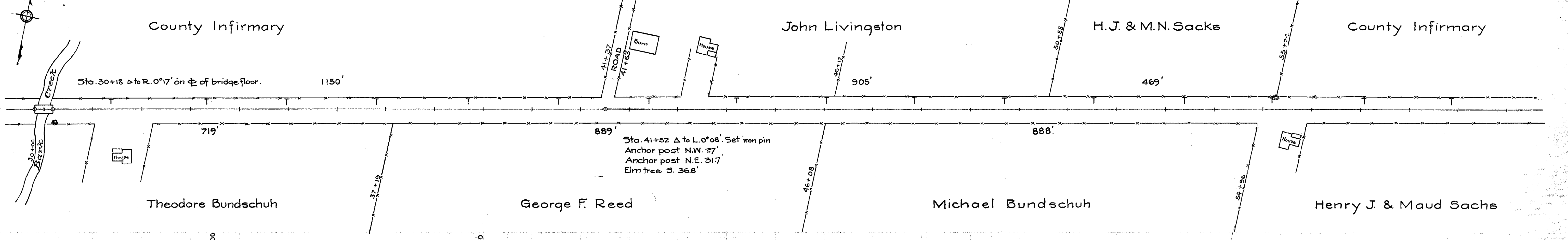
CITY
OF
FREMONT

Sta. 0 Set iron pin
Tree S. 25.9' Tree N. 30.2'
Tel. pole S.W. 66'

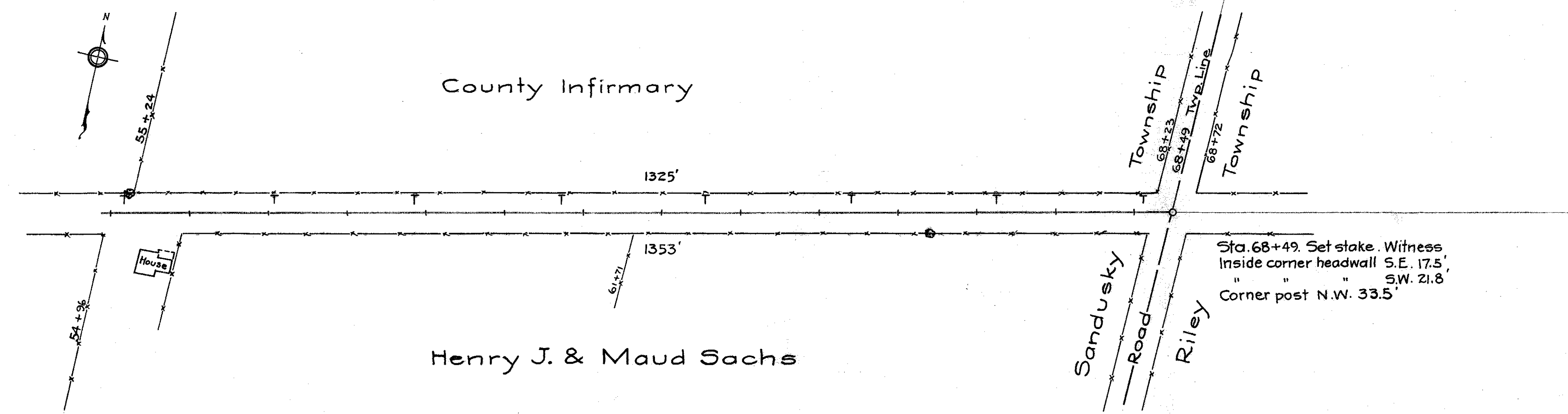


Station No.	Present Grade of Road	Proposed Grade of Road	B.M. Station	Elevation
0	622.0	622.70	B.M. Sta. 0	622.54
1	622.3	622.70		
2	622.2	622.70		
3	622.2	622.70		
4	622.1	622.70		
5	622.2	622.70		
6	622.3	622.67	B.M. Sta. 6+42	622.85
7	622.3	622.65		
8	622.2	622.55		
9	622.1	622.50		
10	622.1	622.45		
11	622.2	622.40	B.M. Sta. 11+85	622.05
12	622.1	622.35		
13	621.9	622.30		
14	621.6	622.25		
15	621.7	622.20		
16	621.6	622.10		
17	621.4	622.00		
18	621.4	621.95		
19	621.3	621.80	B.M. Sta. 19+21	620.89
20	621.2	621.70		
21	620.9	621.60		
22	620.5	621.50		
23	620.4	621.15		
24	620.5	620.97	B.M. Sta. 23+20	621.29
25	619.5	620.55		
26	617.1	618.15		
27	614.0	615.75		
28	612.5	614.15		
29	612.1	613.37		
30	612.15	612.27		

Sta. 30+18 Δ to R. 0° 17' on ϕ of bridge floor.



Station No.	Present Grade of Road	Proposed Grade of Road	B.M. Station	Elevation
30	612.15	612.10		
31	613.5	613.03		
32	616.9	616.65		
33	620.3	619.51	B.M. Sta. 31+29	614.25
34	620.8	620.52		
35	620.6	621.00		
36	620.6	621.00	B.M. Sta. 36+80	620.82
37	620.5	621.00		
38	620.7	621.00		
39	620.8	621.00		
40	620.8	620.95		
41	620.5	620.90		
42	619.9	620.85		
43	619.9	620.80		
44	619.7	620.75		
45	620.0	620.70	B.M. Sta. 46+05	619.08
46	620.1	620.65		
47	620.3	620.60		
48	620.3	620.55		
49	620.1	620.50		
50	620.0	620.45		
51	620.1	620.40		
52	620.0	620.35		
53	619.6	620.30		
54	619.3	620.25	B.M. Sta. 53+39	619.29
55	619.1	620.22		
56	619.2	620.17		
57	619.5	620.10		
58	619.5	620.05		
59	619.7	620.00		
60	619.9	619.95		



Station No.	Present Grade of road	Proposed Grade of road
55	619.1	620.20
56	619.2	620.17
57	619.5	620.15
		620.12
58	619.5	620.10
		620.07
58	619.5	620.05
		620.02
59	619.7	620.00
60	619.9	619.97
		619.95
60	619.9	619.92
61	619.6	619.90
		619.75
62	618.7	619.60
		619.45
63	618.8	619.30
		619.15
64	618.3	619.00
		618.85
65	618.1	618.70
		618.55
66	617.9	618.40
		618.25
67	617.5	618.10
		617.95
68	617.4	617.80
68+49	617.4	617.65

Elev. 620.

610

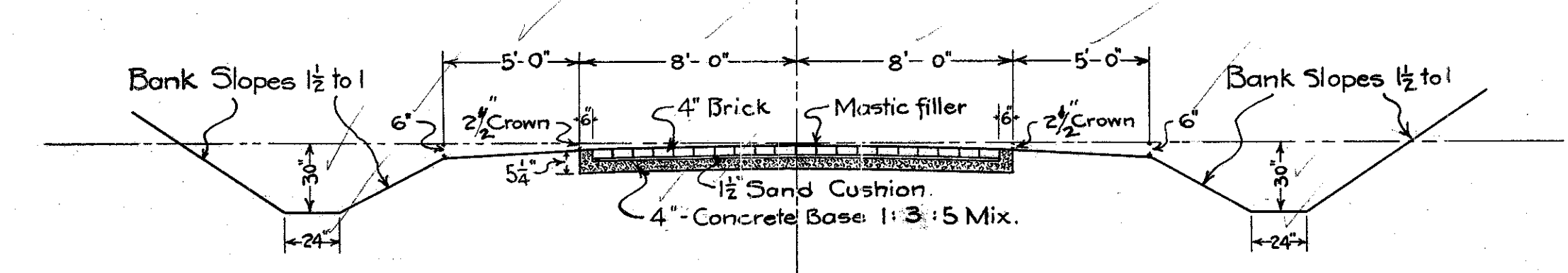
0.05%

0.30%

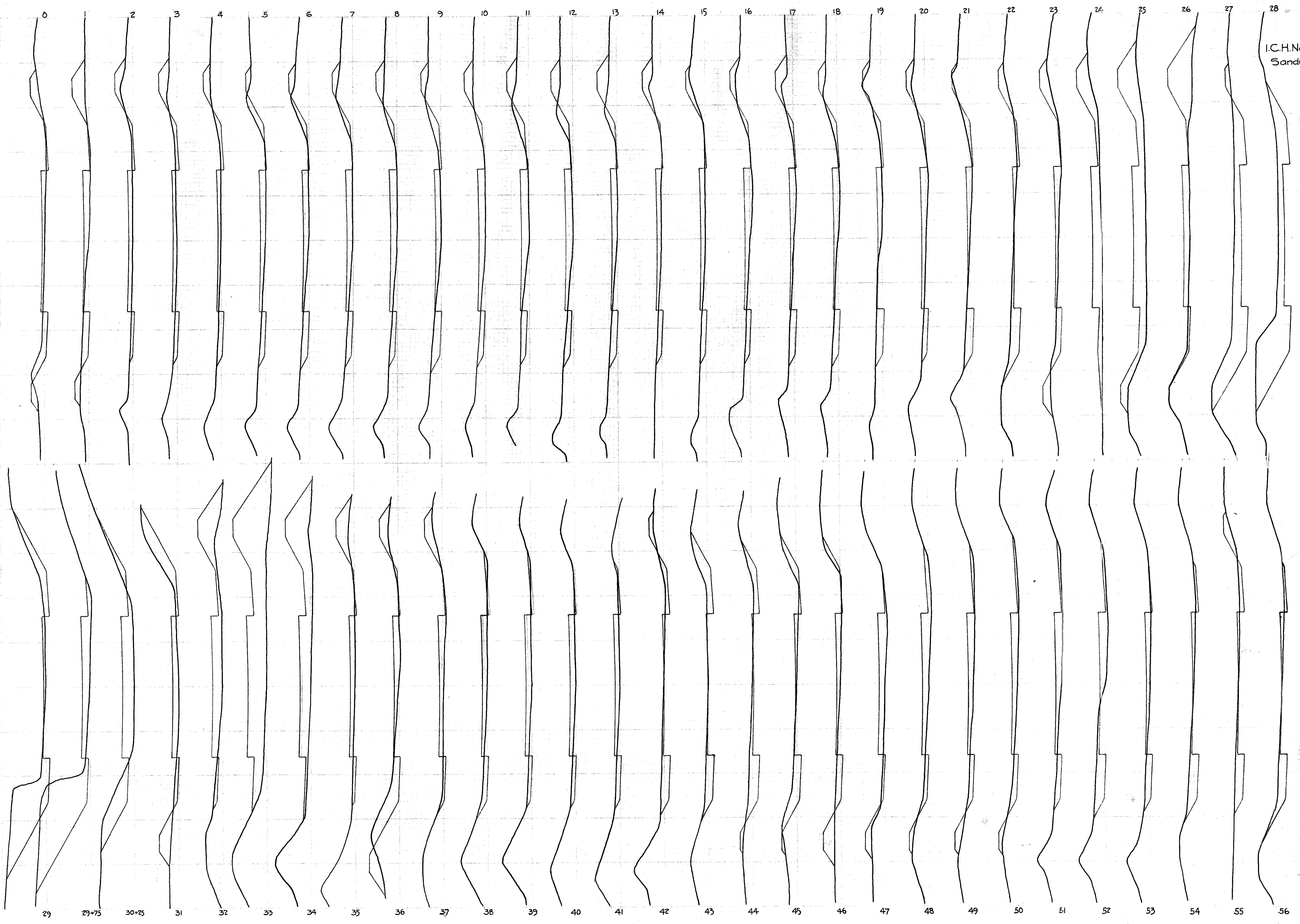
R.I. 619.90

B.M. Sta. 60+72
Spike in Tel. pole L.
Elev. 619.04

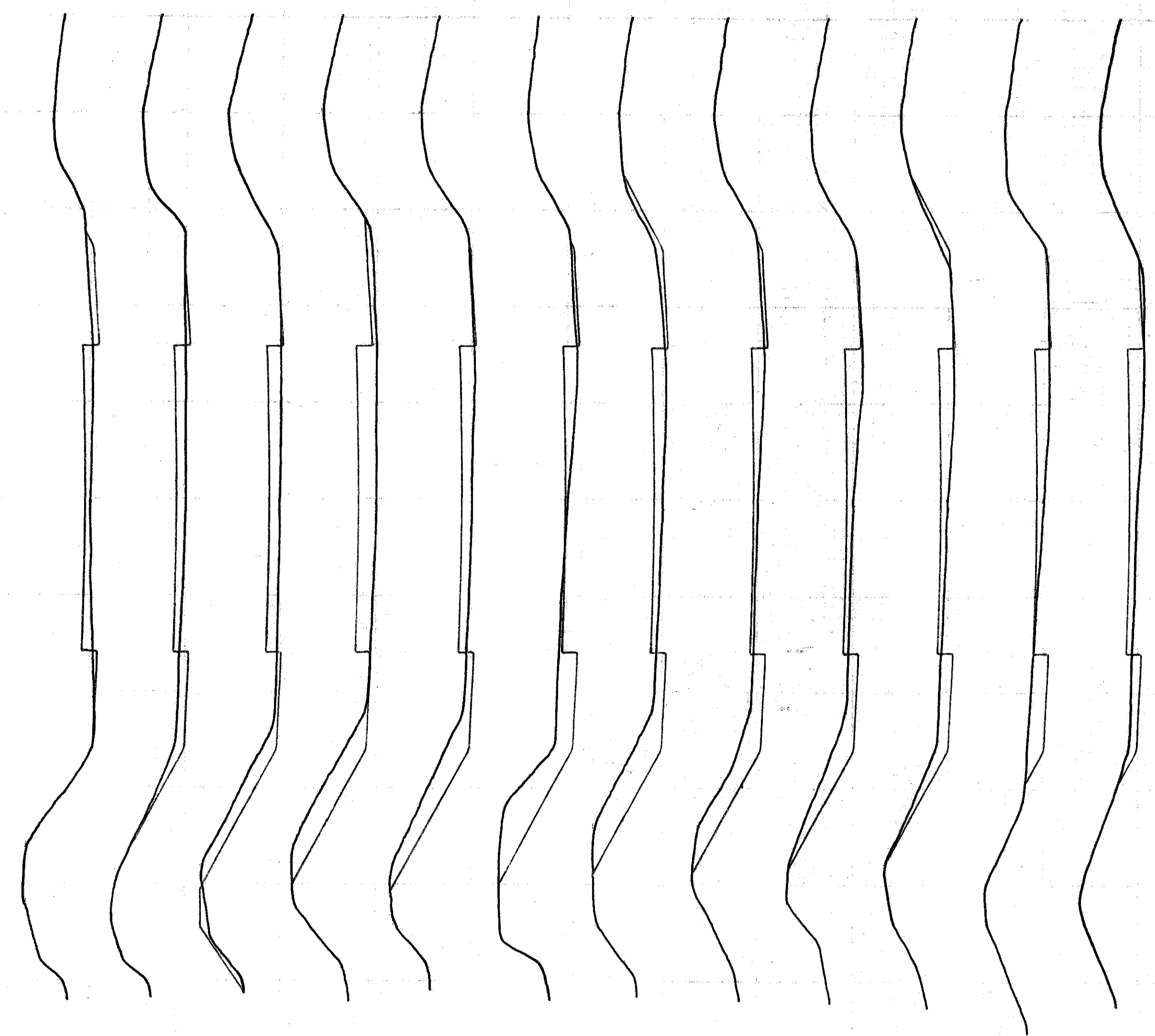
B.M. Sta. 68+50
Top of N.E. Corner Headwall R.
Elev. 618.58



TYPICAL SECTION



0 2 3 4 5 6 7 8 9 10 11 12 13 14 15 16 17 18 19 20 21 22 23 24 25 26 27 28
29 29+75 30+25 31 32 33 34 35 36 37 38 39 40 41 42 43 44 45 46 47 48 49 50 51 52 53 54 55 56



57 58 59 60 61 62 63 64 65 66 67 68

2014
5-15-14