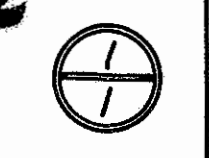


R/W Plan
S.H. 281 Sec. T2
Sandusky County

SR-112



*R/W checked
easement obtained as shown
JRS
3/21/44*

Christian Schultz, Heirs
% Estelle Schultz
801 South St. Fremont, Ohio.
1X & 2X

BR. No. SA-12-164

Markers to be set at points
marked thus. Wood stakes
Now set.

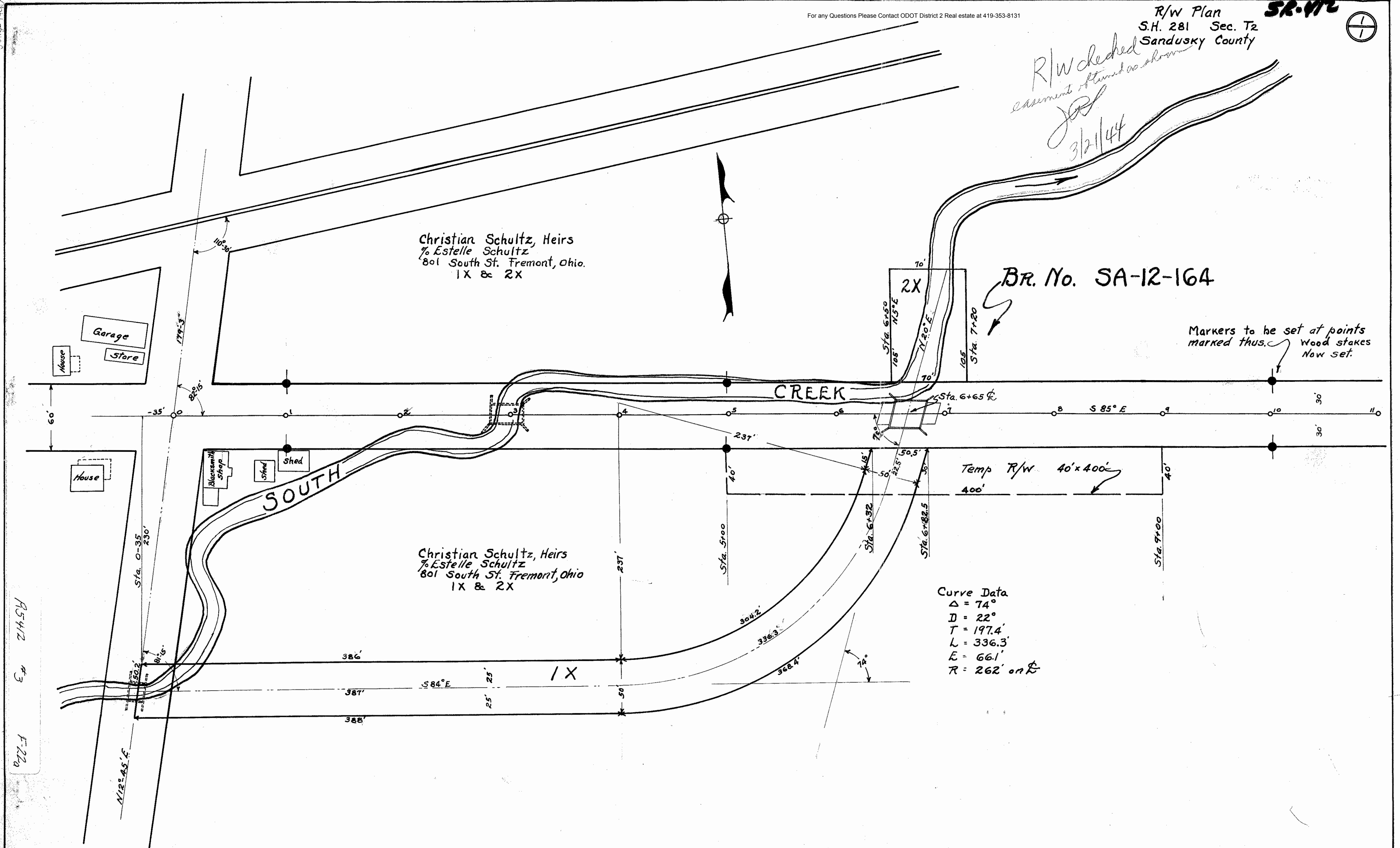
CREEK

SOUTH

Christian Schultz, Heirs
% Estelle Schultz
801 South St. Fremont, Ohio
1X & 2X

Curve Data
 $\Delta = 74^\circ$
 $D = 22'$
 $T = 197.4'$
 $L = 336.3'$
 $E = 66.1'$
 $R = 262' \text{ on } R$

Temp R/W 40' x 400'
400'



R5412 #3 F-22a