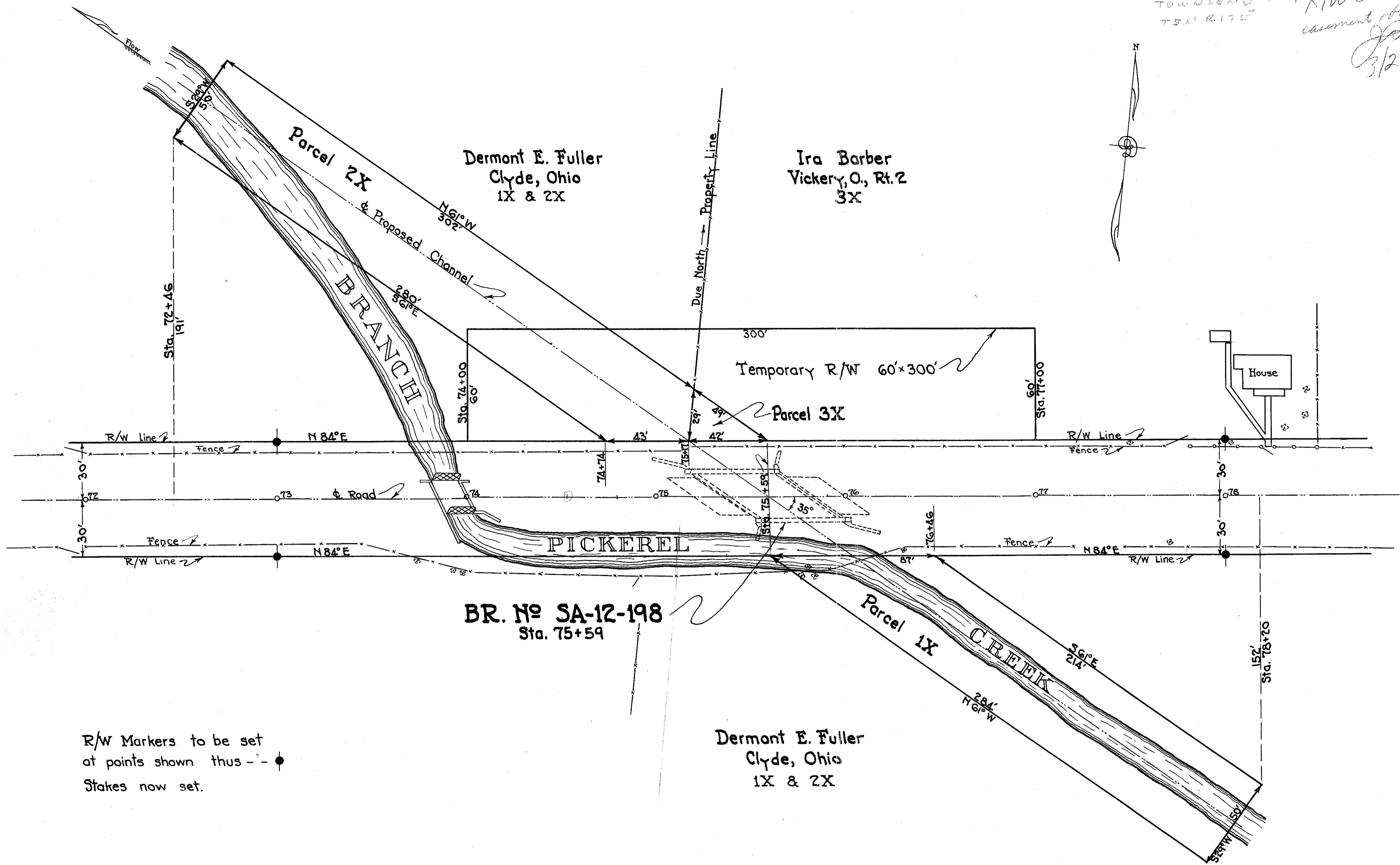


SR-412

RIGHT-OF-WAY PLAN
S.H. 281 - SEC. F-BRIDGE
SANDUSKY COUNTY



NW 1/4 Sec 30,
TOWNSHIP Twp
T5N R17E
R/W checked
assessments obtained as shown
3/21/44



Dermont E. Fuller
Clyde, Ohio
1X & 2X

Ira Barber
Vickery, O., Rt. 2
3X

Dermont E. Fuller
Clyde, Ohio
1X & 2X

R/W Markers to be set
at points shown thus - - ●
Stakes now set.

RS412 #4 F22