

O.D.O.T. DISTRICT 2 SURVEY OFFICE (USE ONLY)

PERSONNEL

REFERENCE NO. 0 C

SHEET 4 OF 33

NOTES RHOADES DATE 7/20/22
 H.C. RHOADES WEATHER CLOUDY
 R.C. WHITAKER TEMP. 82°

ROUTE SR 412
 COUNTY SANDUSKY
 TOWNSHIP SANDUSKY
 SECTION 25
 T 5 N R 16 E

DWG BY RHOADES PID PAVETRAIN

TYPE MONUMENT MAG/WASHER

ON SURFACE - ~~BELOW~~ ON

OFFSET CL PAVEMENT 1.8' ET : RT

9' TO RT EDGE PAVEMENT

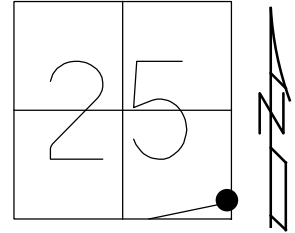
STATION: 34+81.4

HORZ.DATUM: NAD83 2011

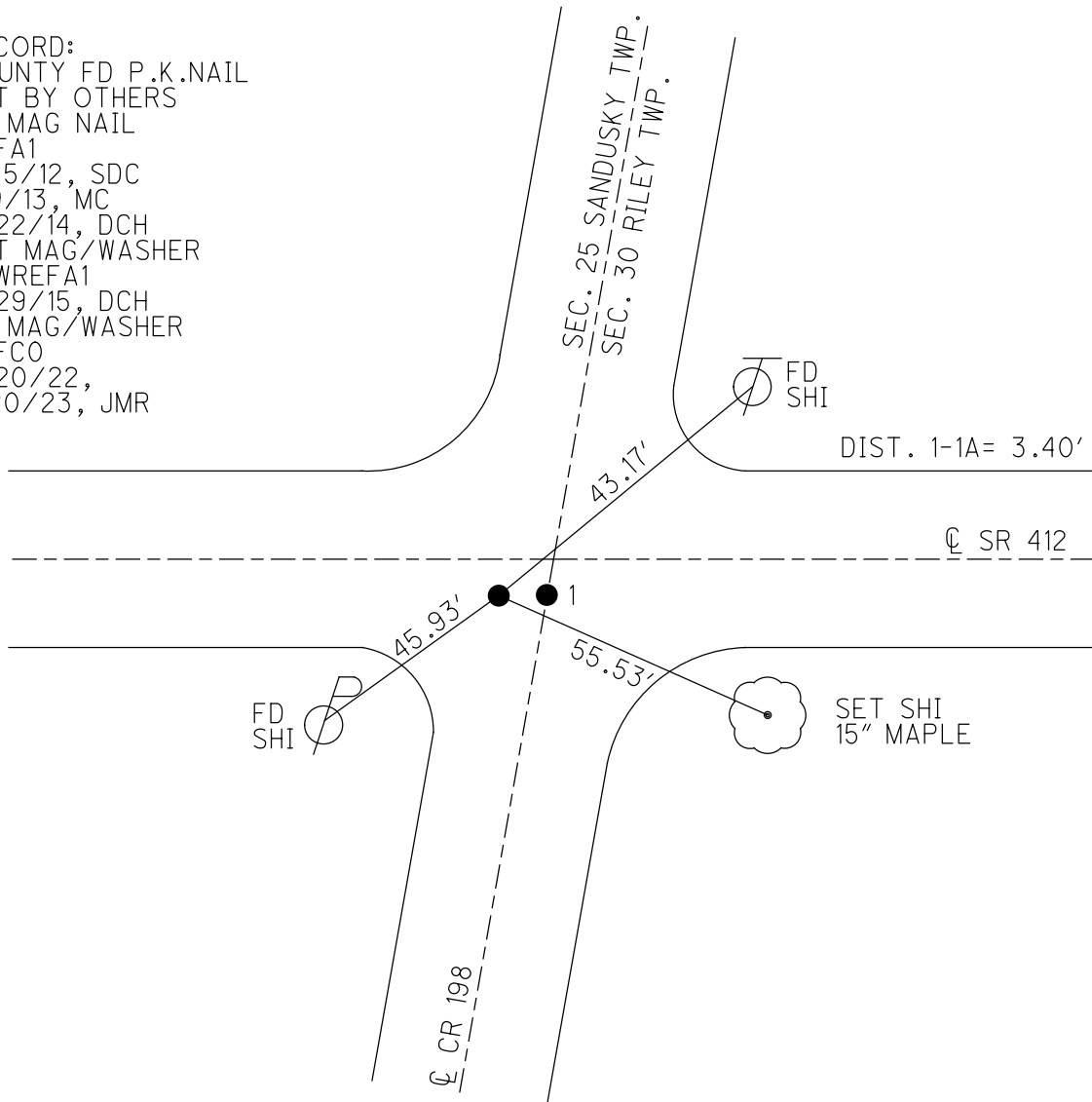
GEOID: NAVD88 2018

GRID: NORTHING: 616501.764

EASTING: 1812303.445



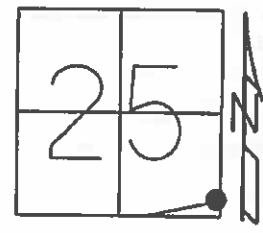
RECORD:
 COUNTY FD P.K.NAIL
 SET BY OTHERS
 FD MAG NAIL
 REFA1
 12/5/12, SDC
 1/9/13, MC
 9/22/14, DCH
 SET MAG/WASHER
 NEWREFA1
 6/29/15, DCH
 FD MAG/WASHER
 REFCO
 7/20/22,
 1/20/23, JMR



O.D.O.T. DISTRICT 2 SURVEY OFFICE (USE ONLY)

PERSONNEL _____ REFERENCE NO. 0 C SHEET 4 OF 33
NOTES LEU DATE 09-22-14 ROUTE SR 412
H.C. HOMAN WEATHER CLOUDY COUNTY SANDUSKY
R.C. LEU TEMP. 55° TOWNSHIP SANDUSKY
SECTION 25
T 5 N R 16 E

TYPE MONUMENT MAG NAIL
ON SURFACE - ~~BELOW~~ ON _____
~~LEFT~~ - Q PAV'T - RIGHT 1.8'
9' TO RT EDGE PAVEMENT
S.L.M. 34+81.4



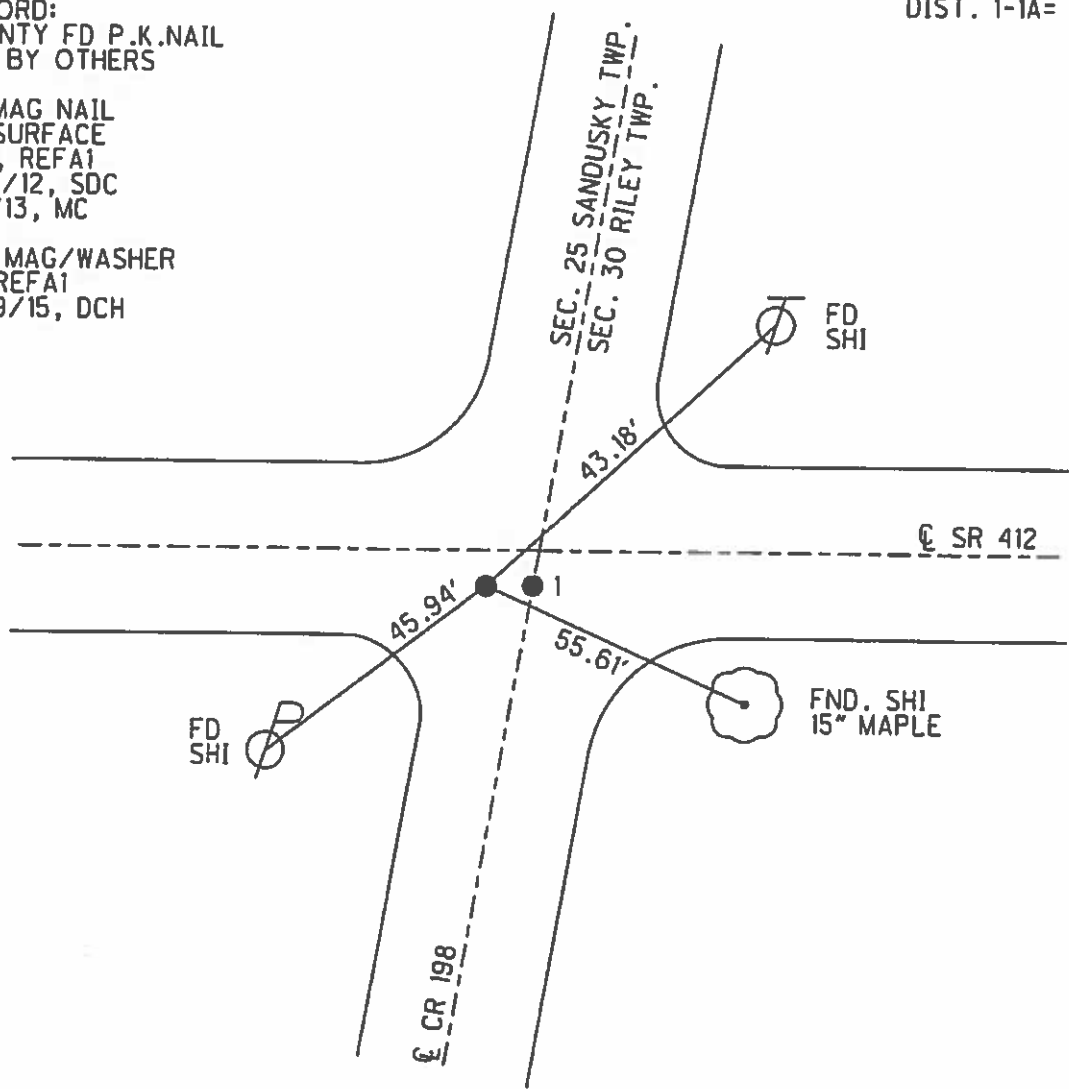
Grid: Northing: 616501.819 Easting: 1812303.477

RECORD:
COUNTY FD P.K.NAIL
SET BY OTHERS

FD MAG NAIL
AT SURFACE
GPS, REFA1
12/5/12, SDC
1/9/13, MC

SET MAG/WASHER
NEWREFA1
6/29/15, DCH

DIST. 1-1A= 3.40'



O.D.O.T. DISTRICT 2 SURVEY OFFICE

PERSONNEL

REFERENCE NO. 1

SHEET 1 OF 21

NOTES Cheney M

H.C. RIPPLE

DATE 4-27-1993

ROUTE SR. 412

R.C. BARBOUR

WEATHER SUNNY

COUNTY SANDUSKY

FL. GEYMAN

TEMP. 55°

TOWNSHIP RILEY

SECTION 30

T. 5 N R. 16 E

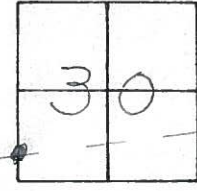
TYPE MONUMENT Fd. RR. Spk.

ON-SURFACE - BELOW 2"±

LEFT-CL PAV'T. - RIGHT 1'

9' TO RT. EDGE PAVEMENT

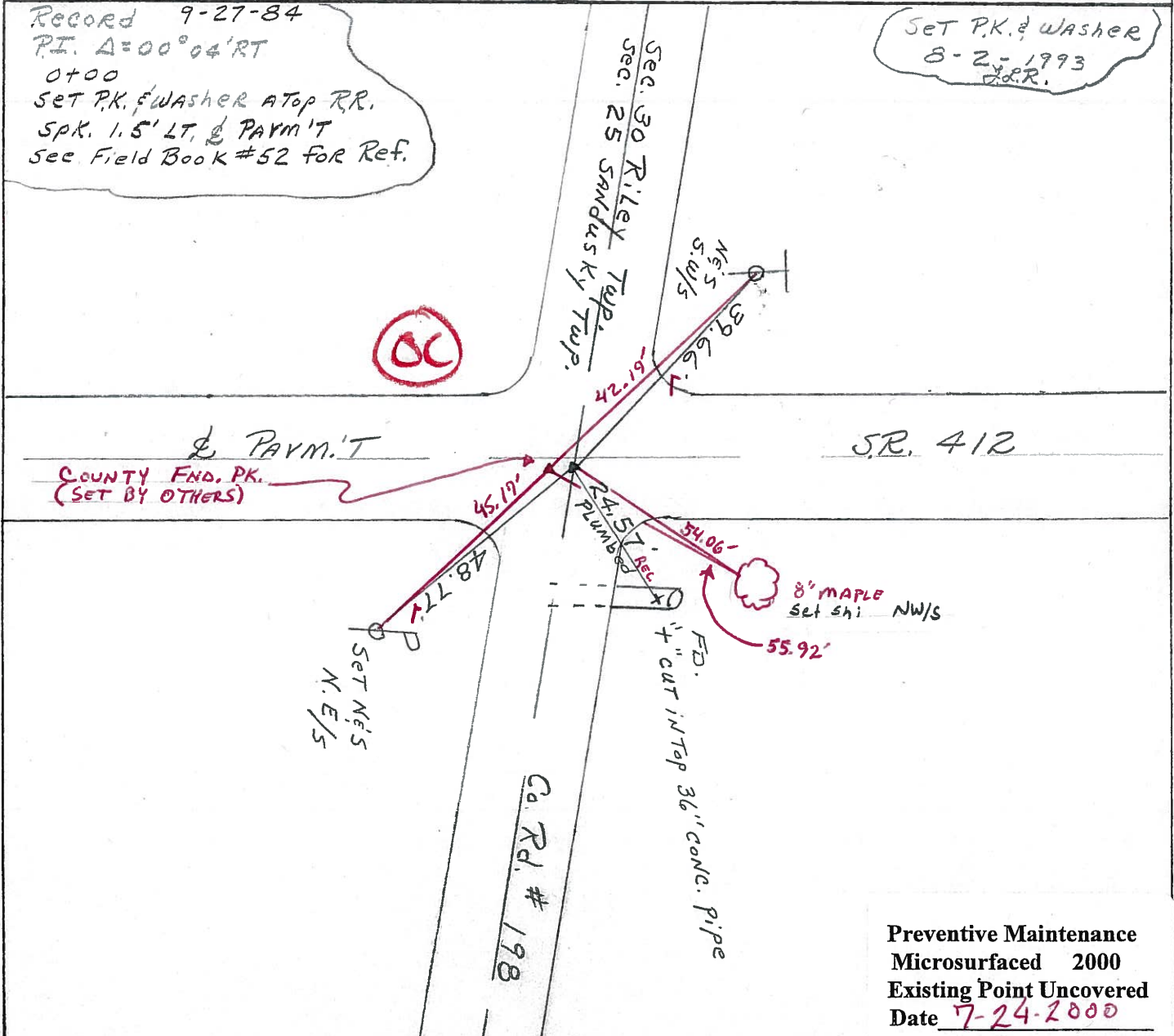
S.L.M. 34+14



Record 9-27-84
 P.I. Δ=00°04'RT
 0+00
 SET P.K. & WASHER ATOP RR.
 SPK. 1.5' LT. & PAVM'T
 See Field Book #52 FOR Ref.

Set P.K. & Washer
 8-2-1993
 J.R.R.

OC



Preventive Maintenance
 Microsurfaced 2000
 Existing Point Uncovered
 Date 7-24-2000