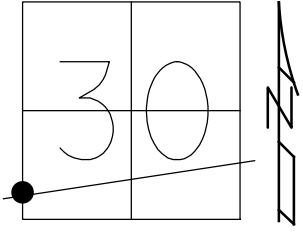


O.D.O.T. DISTRICT 2 SURVEY OFFICE (USE ONLY)

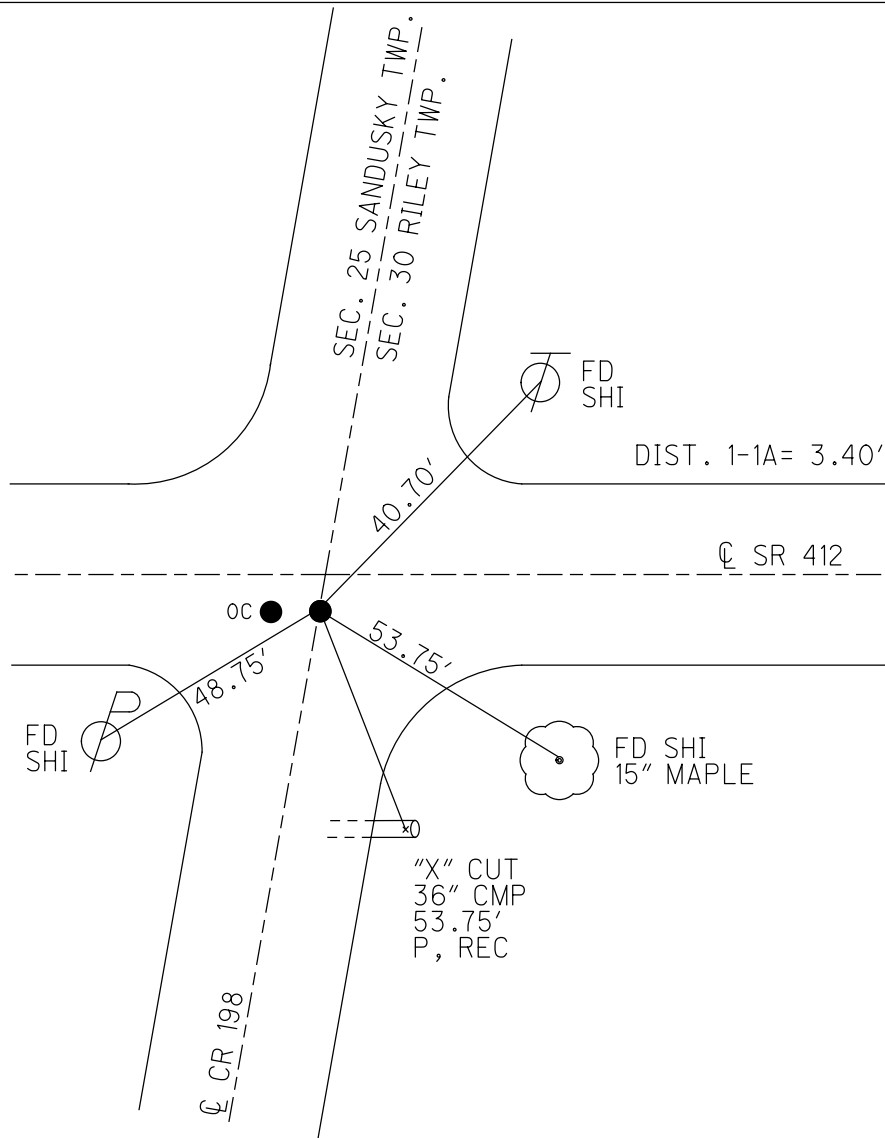
PERSONNEL \_\_\_\_\_ REFERENCE NO. 1 SHEET 5 OF 33  
 NOTES RHOADES DATE 7/20/22 ROUTE SR 412  
 H.C. RHOADES WEATHER CLOUDY COUNTY SANDUSKY  
 R.C. WHITAKER TEMP. 82° TOWNSHIP RILEY  
 DWG BY RHOADES PID PAVETRAIN SECTION 30  
 T 5 N R 16 E

TYPE MONUMENT LG.R.R.SPIKE  
~~ON SURFACE~~ - BELOW 4"  
 OFFSET CL PAVEMENT 1.8' ~~RT~~ : RT  
9' TO RT EDGE PAVEMENT  
 STATION: 34+84.8



HORZ.DATUM: NAD83 2011 GEOID: NAVD88 2018  
 GRID: NORTHING: 616502.438 EASTING: 1812306.771

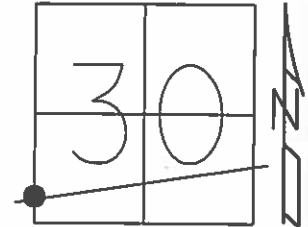
RECORD: P.I.  
 $\Delta=00^{\circ}04'$  RT  
 STA 0+00  
 SET P.K./WASHER  
 ATOP R.R.SPIKE  
 1.5' LT OF CL  
 FIELD BOOK 52  
 9/27/84  
 SET P.K./WASHER  
 8/2/93, JLR  
 FD R.R.SPIKE  
 REF1  
 12/5/12, SDC  
 1/9/13, MC  
 9/22/14, DCH  
 FD R.R.SPIKE  
 4" DOWN  
 NEWREF1  
 6/29/15, DCH  
 FD LG.R.R.SPIKE  
 4" DOWN  
 REF1  
 7/20/22,  
 1/20/23, JMR



O.D.O.T. DISTRICT 2 SURVEY OFFICE (USE ONLY)

PERSONNEL	REFERENCE NO.	1	SHEET	5	OF	33
NOTES	LEU	DATE	09-22-14	ROUTE	SR 412	
H.C.	HOMAN	WEATHER	CLOUDY	COUNTY	SANDUSKY	
R.C.	LEU	TEMP.	55°	TOWNSHIP	RILEY	
				SECTION	30	
				T	5	R
					16	E

TYPE MONUMENT R.R.SPIKE  
~~ON SURFACE~~ - BELOW 4"  
~~LEFT~~ - ☉ PAV'T - RIGHT 1.8'  
9' TO RT EDGE PAVEMENT  
 S.L.M. 34+84.8



Grid: Northing: 616502.467 Easting: 1812306.806

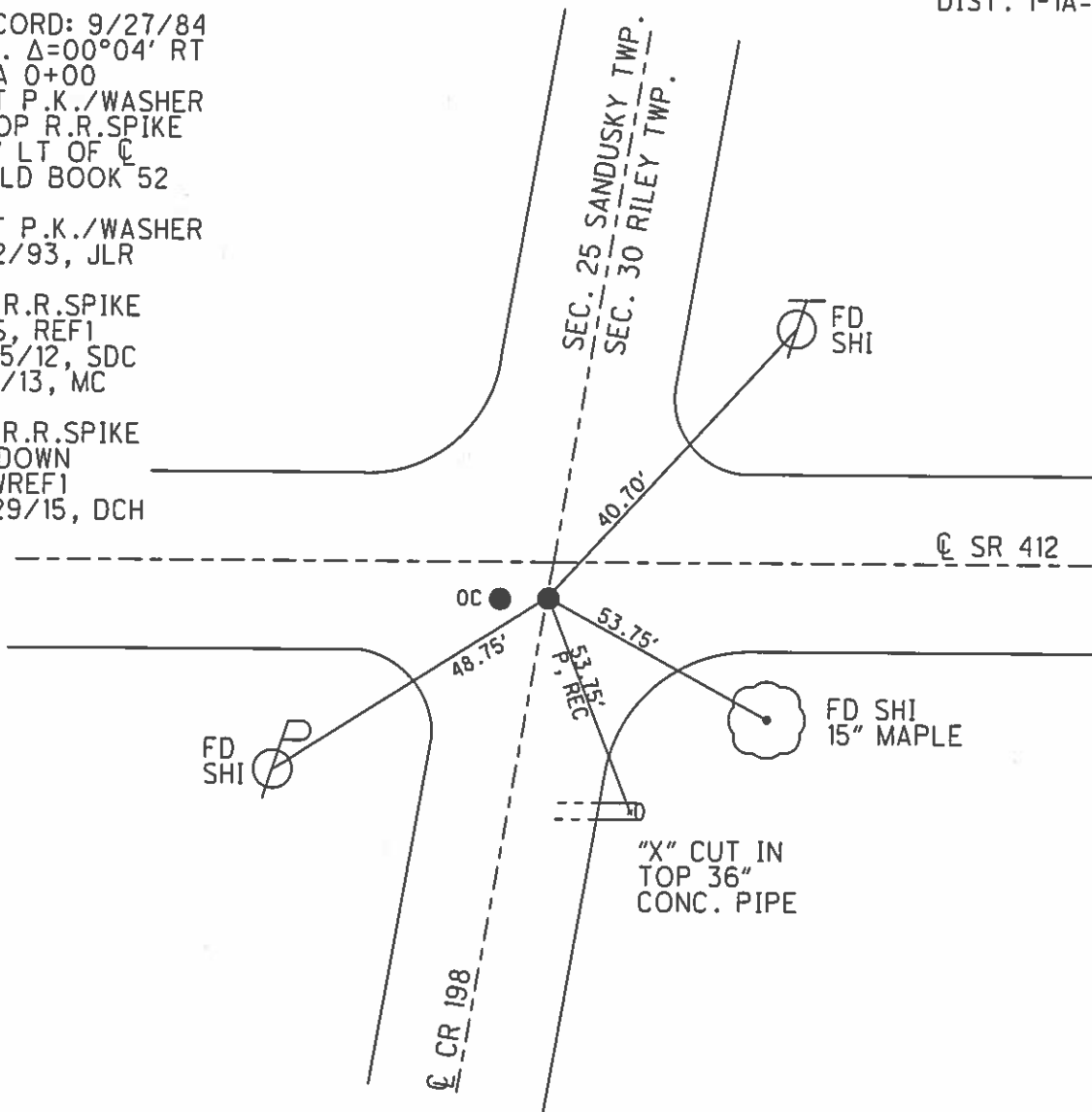
DIST. 1-1A= 3.40'

RECORD: 9/27/84  
 P.I. Δ=00°04' RT  
 STA 0+00  
 SET P.K./WASHER  
 ATOP R.R.SPIKE  
 1.5' LT OF ☉  
 FIELD BOOK 52

SET P.K./WASHER  
 8/2/93, JLR

FD R.R.SPIKE  
 GPS, REF1  
 12/5/12, SDC  
 1/9/13, MC

FD R.R.SPIKE  
 4" DOWN  
 NEWREF1  
 6/29/15, DCH



# O.D.O.T. DISTRICT 2 SURVEY OFFICE

PERSONNEL

REFERENCE NO. 1

SHEET 1 OF 21

NOTES Cheney M

H.C. RIPPLE

DATE 4-27-1993

ROUTE SR. 412

R.C. BARBOUR

WEATHER SUNNY

COUNTY SANDUSKY

FL. GEYMAN

TEMP. 55°

TOWNSHIP Riley

SECTION 30

T.5 N. R. 16 E

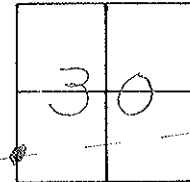
TYPE MONUMENT Fd. R.R. Spk.

ON-SURFACE - BELOW 2" ±

LEFT-0 PAV'T. - RIGHT 1"

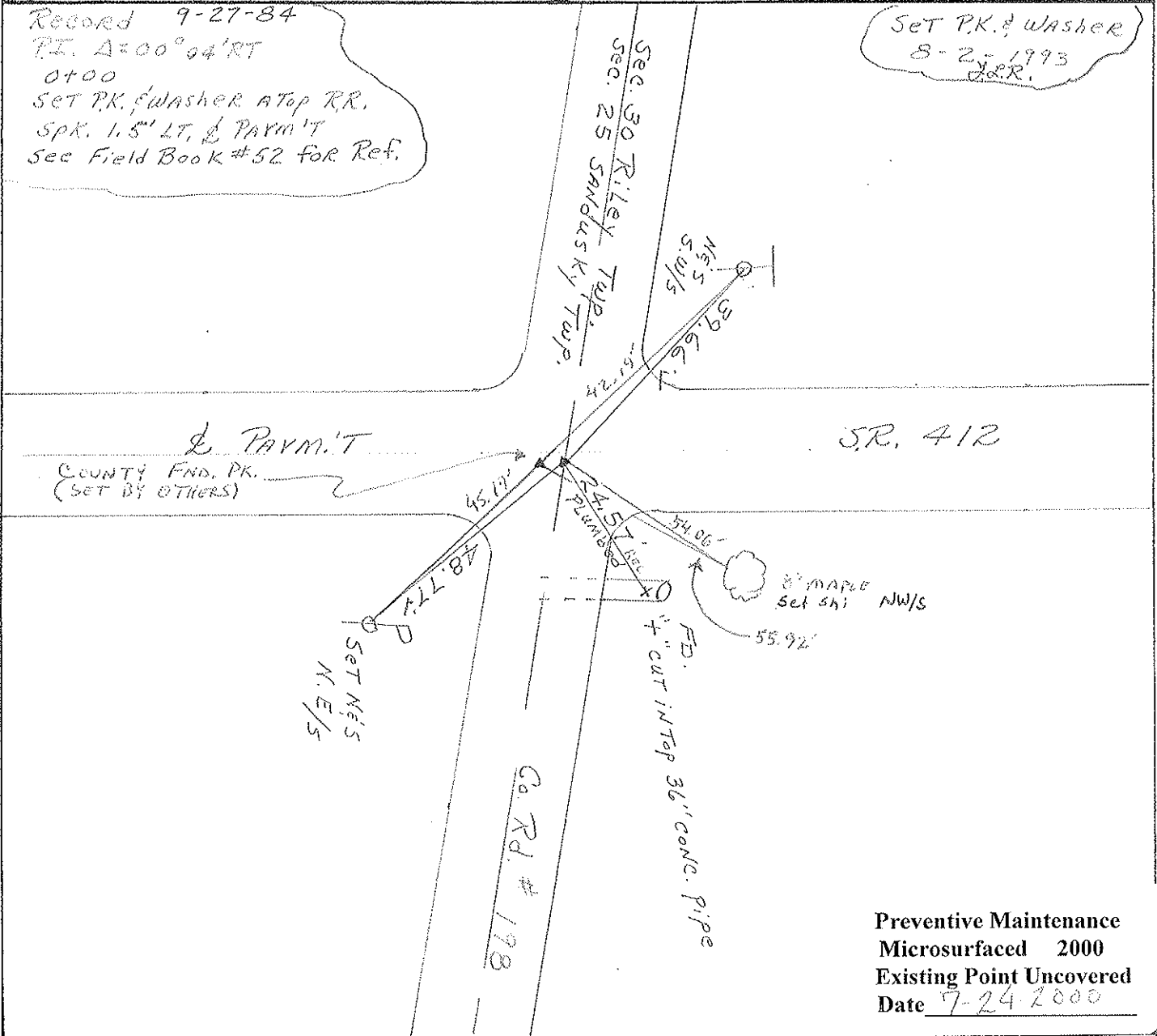
9' TO RT. EDGE PAVEMENT

S.L.M. 34+14



Record 9-27-84  
 P.I. Δ=00°04'RT  
 0+00  
 SET P.K. & washer ATop RR.  
 SPK. 1.5' LT. & PAVM'T  
 See Field Book #52 for Ref.

Set P.K. & washer  
 8-2-1993  
 J.R.R.



Preventive Maintenance  
 Microsurfaced 2000  
 Existing Point Uncovered  
 Date 7-24-2000

O.D.O.T. DISTRICT 2 SURVEY OFFICE

PERSONNEL

REFERENCE NO. 1

SHEET 1 OF 21

NOTES Cheney M

H.C. RIPPLE

DATE 4-27-1993

ROUTE SR. 412

R.C. BARBOUR

WEATHER SUNNY

COUNTY SANDUSKY

FL. GEYMAN

TEMP. 55°

TOWNSHIP Riley

SECTION 30

T. 5 N R. 16 E

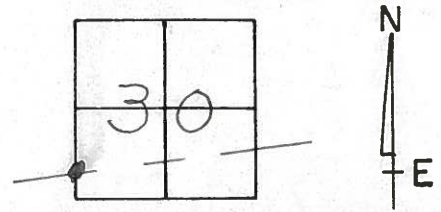
TYPE MONUMENT Fd. R.R. Spk.

ON SURFACE - BELOW 2" ±

LEFT- & PAVM.'T - RIGHT 1'

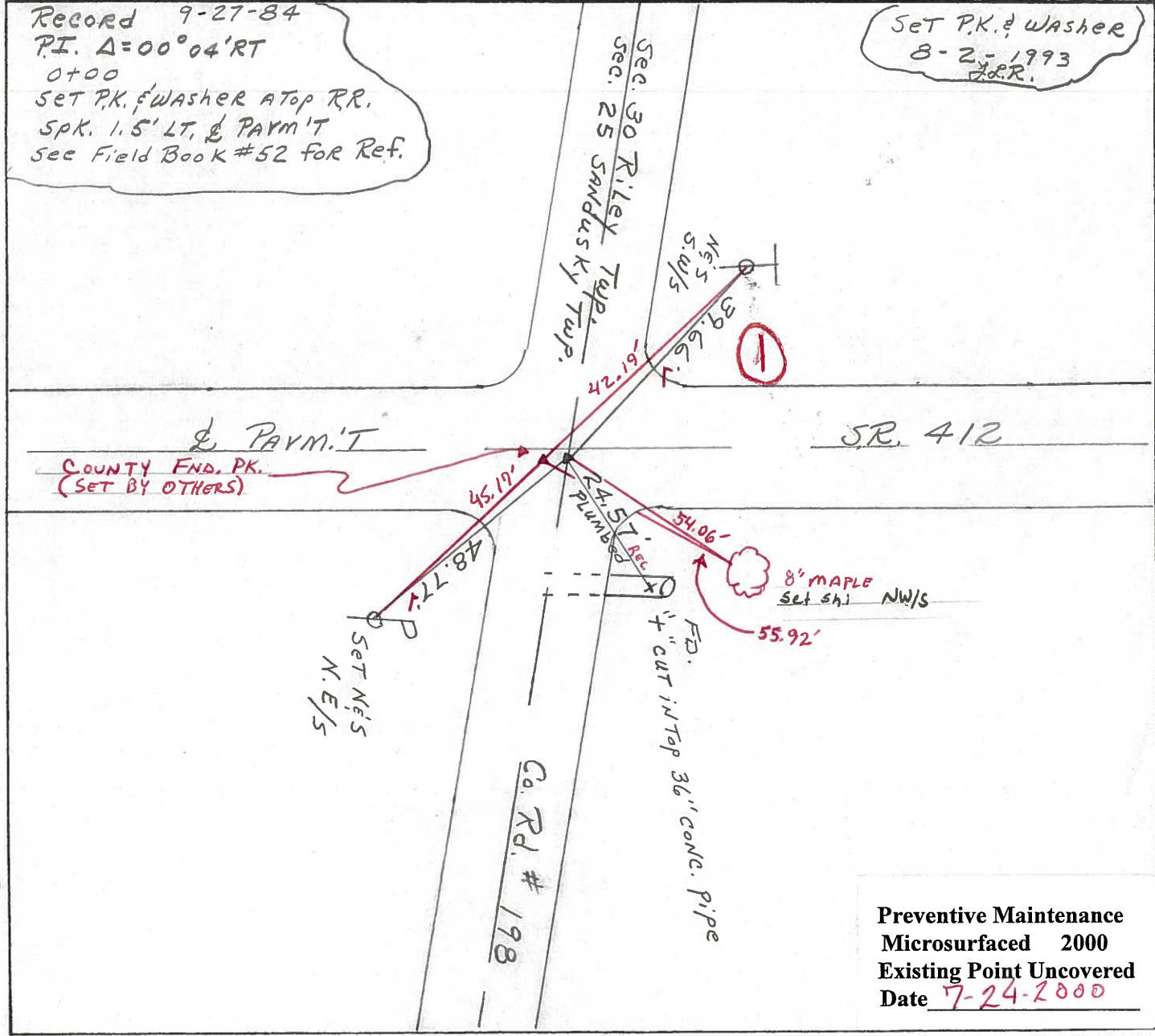
9' TO RT. EDGE PAVEMENT

S.L.M. 34+14



Record 9-27-84  
 P.I. Δ=00°04'RT  
 0+00  
 SET P.K. & WASHER ATOP RR.  
 SPK. 1.5' LT. & PAVM.'T  
 See Field Book #52 for Ref.

Set P.K. & Washer  
 8-2-1993  
 J.R.R.



Preventive Maintenance  
 Microsurfaced 2000  
 Existing Point Uncovered  
 Date 7-24-2000

Resurfaced 1993

Q.D.O.T. DISTRICT 2 SURVEY OFFICE

SHEET 1 OF

County Sandusky S.R. # 412

Township Riley

Section 30

T 5 N, R 16 E

Personnel Cronin

Ripple

Geyman

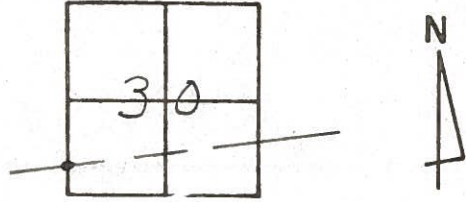
Barbour

#  
1

Date 9/27/84

Weather overcast - windy

Temp. 46°



S.R. # 412

39.64'

Sec. 30 Riley Twp.  
Sec. 25 Sandusky Twp.

25.54' Plumb  
4' cut in top 36" conc. pipe

Co. Rd. # 198

41.87' Plumb  
48.82'  
State of Ohio  
Plw Mon. (slightly loose)

25.68'

P.I. Δ = 00° 04' Rt. Rec.  
0 + 00

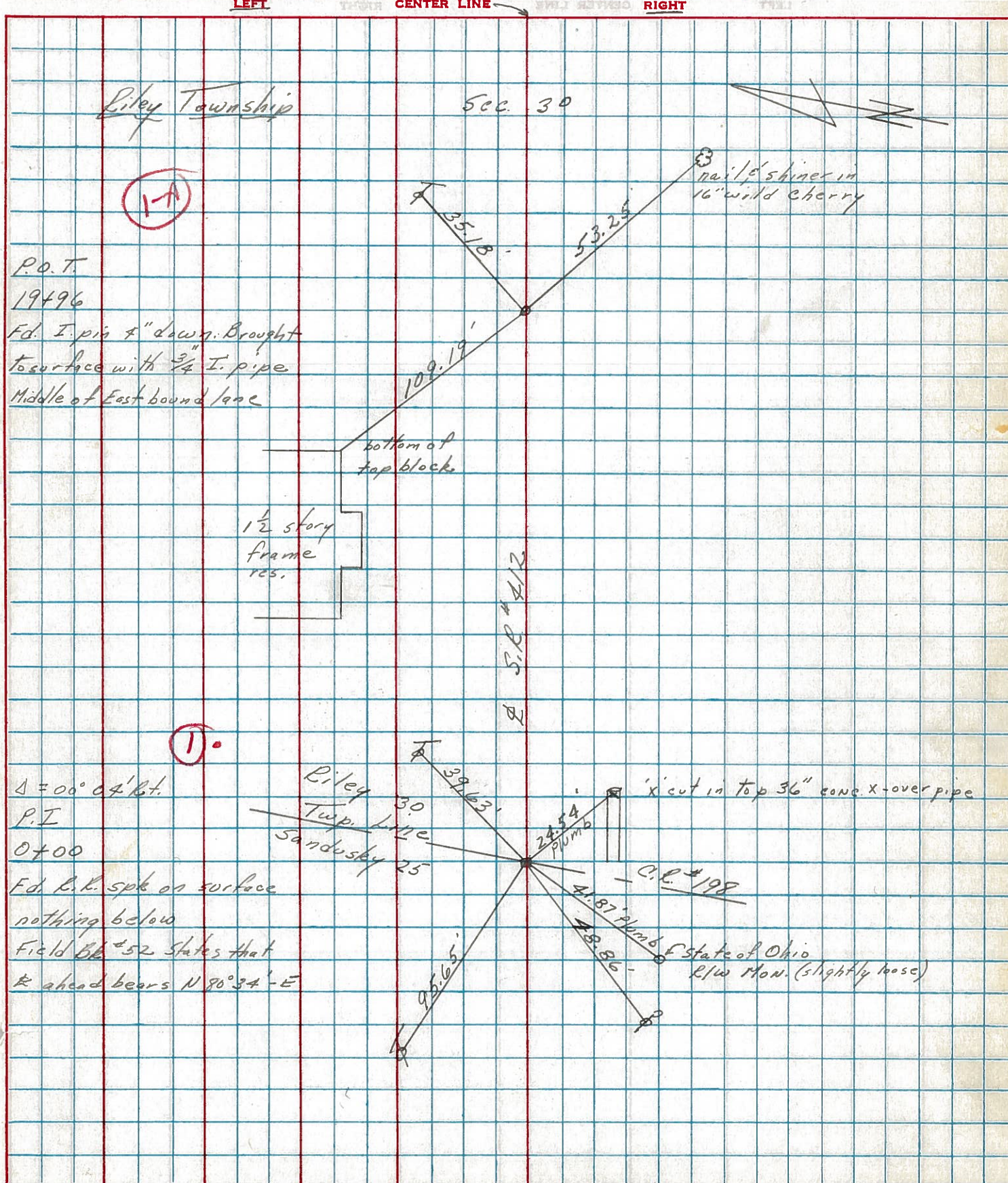
Set P.K. & washer atop P.R.  
Spike 1.5' Rt. & Pavement. See  
Field Book #52 for Ref.

PERSONNEL	TITLE	PERSONNEL	TITLE
Cronin		Schneider	
Ash		Mosser	
Ripple		Barbour	
Geyman			

COUNTY Sandusky DATE 8/23/74  
 S. R. #412 WEATHER sunny  
 SEC. '0' - Field Blk. #52 TEMP. 70°

DESCRIPTION Ties for Control Points

JOB NO.



PERSONNEL	TITLE	PERSONNEL	TITLE
Schneider		Potts	
Mosser			
Barbour			
Redding			

COUNTY Sandusky DATE Jan. 1968  
 S. R. 412 WEATHER \_\_\_\_\_  
 SEC. N.E. of Fremont TEMP. \_\_\_\_\_

DESCRIPTION Ties for Control Points JOB NO. \_\_\_\_\_

