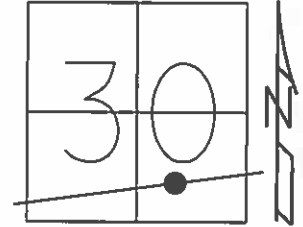


O.D.O.T. DISTRICT 2 SURVEY OFFICE (USE ONLY)

PERSONNEL _____ REFERENCE NO. 2 SHEET 7 OF 33

NOTES LEU DATE 09-22-14 ROUTE SR 412
H.C. HOMAN WEATHER SUNNY COUNTY SANDUSKY
R.C. LEU TEMP. 60° TOWNSHIP RILEY
SECTION 30
T 5 N R 16 E

TYPE MONUMENT P.K.NAIL
ON SURFACE - ~~BELOW~~ ON _____
LEFT - ☉ PAV'T - ~~RIGHT~~ 0.5'
10' TO RT EDGE PAVEMENT
S.L.M. 58+81.4



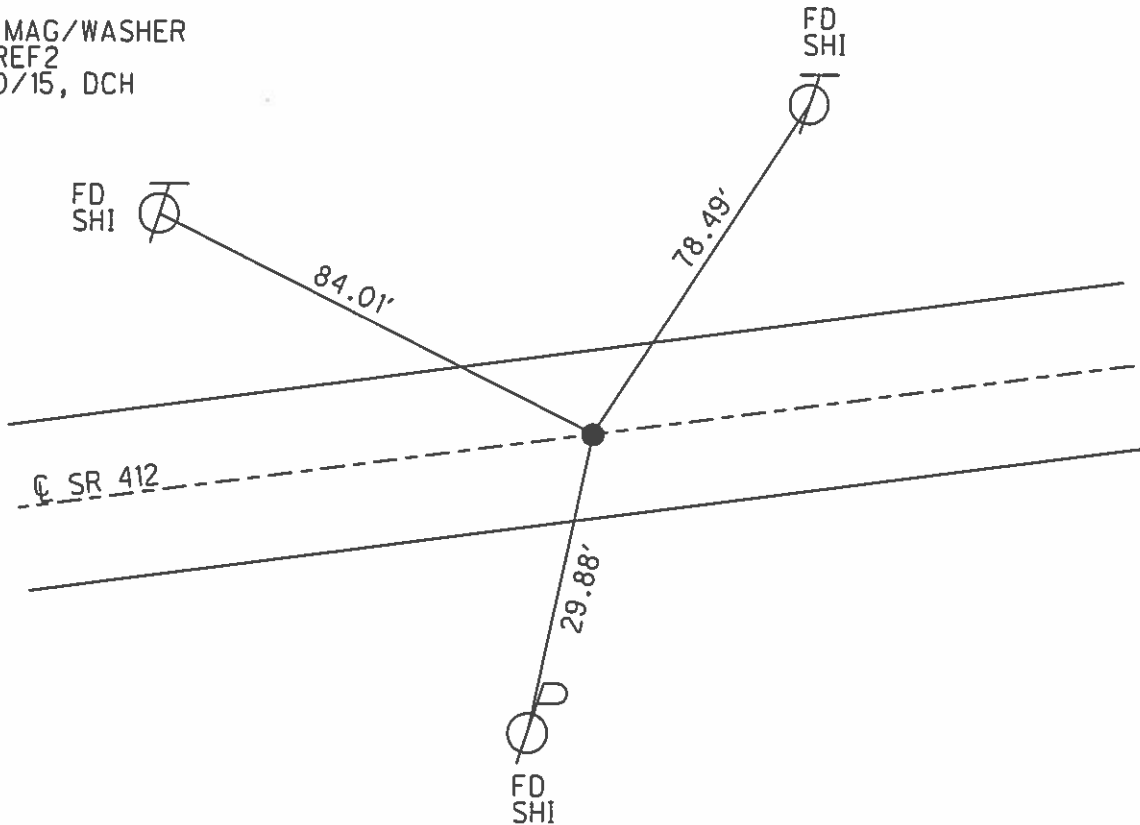
Grid: Northing: 616987.931 Easting: 1814653.608

RECORD: 8/23/1974
POINT IS ON N-S 1/2
SEC 30 LINE
FIELD BOOK 52

SET P.K./WASHER
10/2/93, JLR

FD P.K.NAIL
GPS, REF3
12/5/12, SDC

SET MAG/WASHER
NEWREF2
6/30/15, DCH



O.D.O.T. DISTRICT 2 SURVEY OFFICE

PERSONNEL

REFERENCE NO. 2

SHEET 3 OF 21

NOTES Cheney

H.C. RIPPLE

R.C. BARBOUR

Geyman

DATE 4-27-93

WEATHER SUNNY

TEMP. 53°

ROUTE S.R. 412

COUNTY SANDUSKY

TOWNSHIP Riley

SECTION 30

T. 5 N R. 16 E

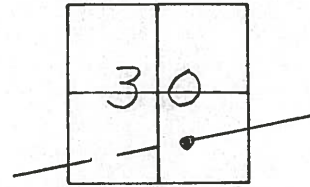
TYPE MONUMENT RR. Spk.

~~ON SURFACE~~ - BELOW 3" ✓

~~LEFT - C. PAV'T. - RIGHT~~ ON

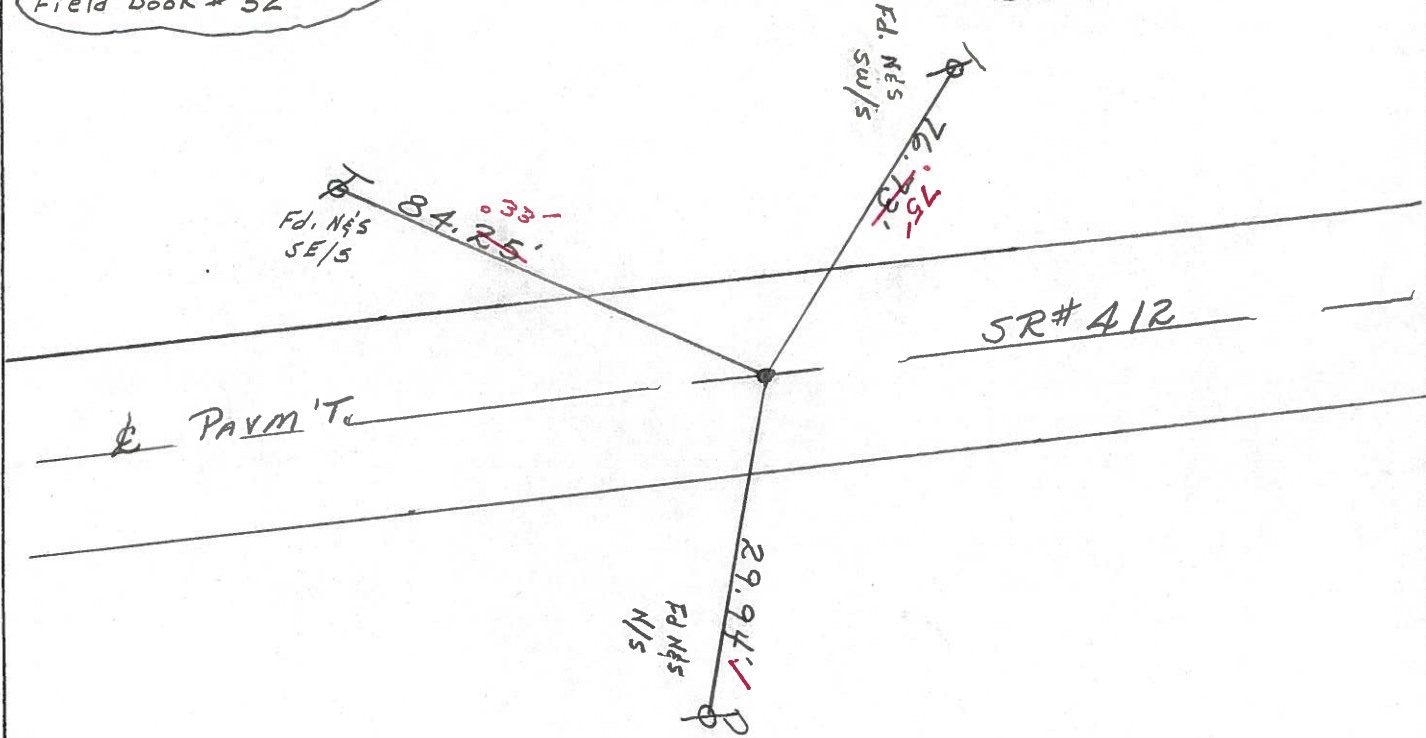
10' TO RT. EDGE PAVEMENT

S.L.M. 58+01 ±



NOTE: Info from
Survey Records. Point
is on N-S 1/2 Sec. Line 30
Field Notes - 8-23-1974
Field Book # 52

Set P.K. & WASHER
10-2-1993 ✓
J.L.R.



Preventive Maintenance
Microsurfaced 2000
Existing Point Uncovered
Date 7-24-2000

PERSONNEL	TITLE	PERSONNEL	TITLE	COUNTY	DATE
Cronin		Schneider		Sandusky	8/23/74
Ash		Masser		S. R. # 412	WEATHER sunny
Ripple		Darbour		SEC. 0' - Field Bk. #52	TEMP. 70°
Geyman					

DESCRIPTION Ties for Control Points JOB NO. _____

