

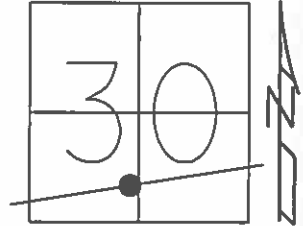
O.D.O.T. DISTRICT 2 SURVEY OFFICE (USE ONLY)

PERSONNEL _____ REFERENCE NO. 2 B SHEET 9 OF 33

NOTES LEU DATE 09-22-2014 ROUTE SR 412
H.C. HOMAN WEATHER SUNNY COUNTY SANDUSKY
R.C. LEU TEMP. 64° TOWNSHIP RILEY
SECTION 30
T 5 N R 16 E

TYPE MONUMENT 5/8" PIN IN MONBOX
ON SURFACE - ~~BELOW~~ ON
~~LEFT~~ - CL PAV'T - RIGHT 1' RT.
10' TO RT. EDGE PAVEMENT
S.L.M. 66+27.97

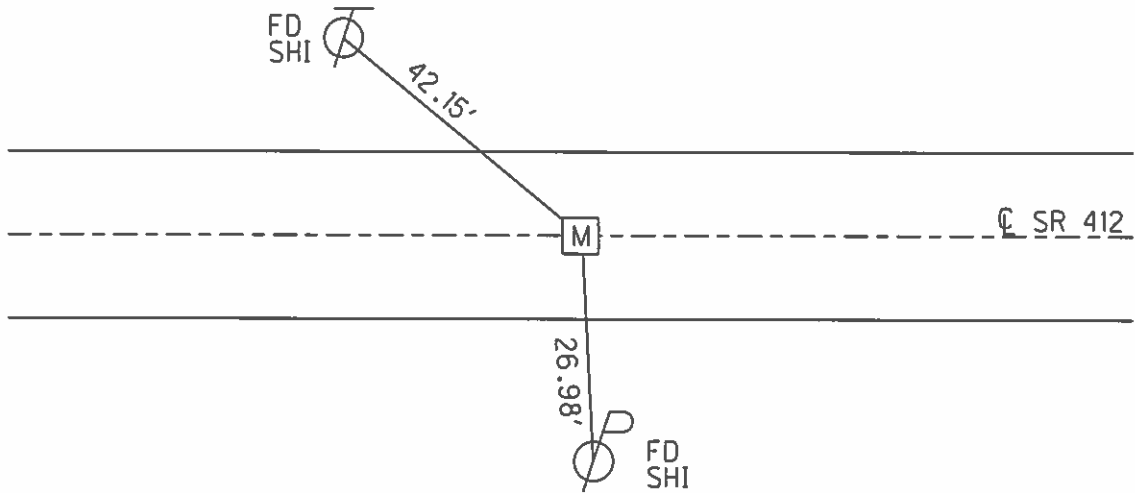
Grid: Northings 517233.604 Easting: 1815353.401



RECORD:
FD MONBOX
8/2/93, JLR

FD MONBOX
GPS, REF5
12/5/12, SDC

FD 3/4" IPIN
IN MONBOX
NEWREFB2
6/30/15, DCH



O.D.O.T. DISTRICT 2 SURVEY OFFICE

PERSONNEL

REFERENCE NO. 2-B

SHEET 5 OF 21

NOTES CHENEY

H.C. RIPPLE

R.C. BARBOUR

GEYMAN

DATE 4-27-1993

WEATHER SUNNY

TEMP. 55°

ROUTE SR. 412

COUNTY SANDUSKY

TOWNSHIP Riley

SECTION 30

T 5 N R 16 E

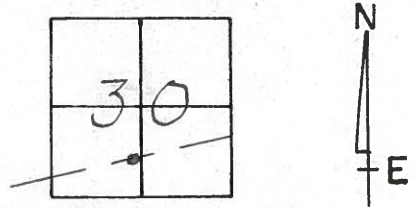
TYPE MONUMENT Mon. Box P.C. of CURVE

ON SURFACE - ~~BELOW~~ ON

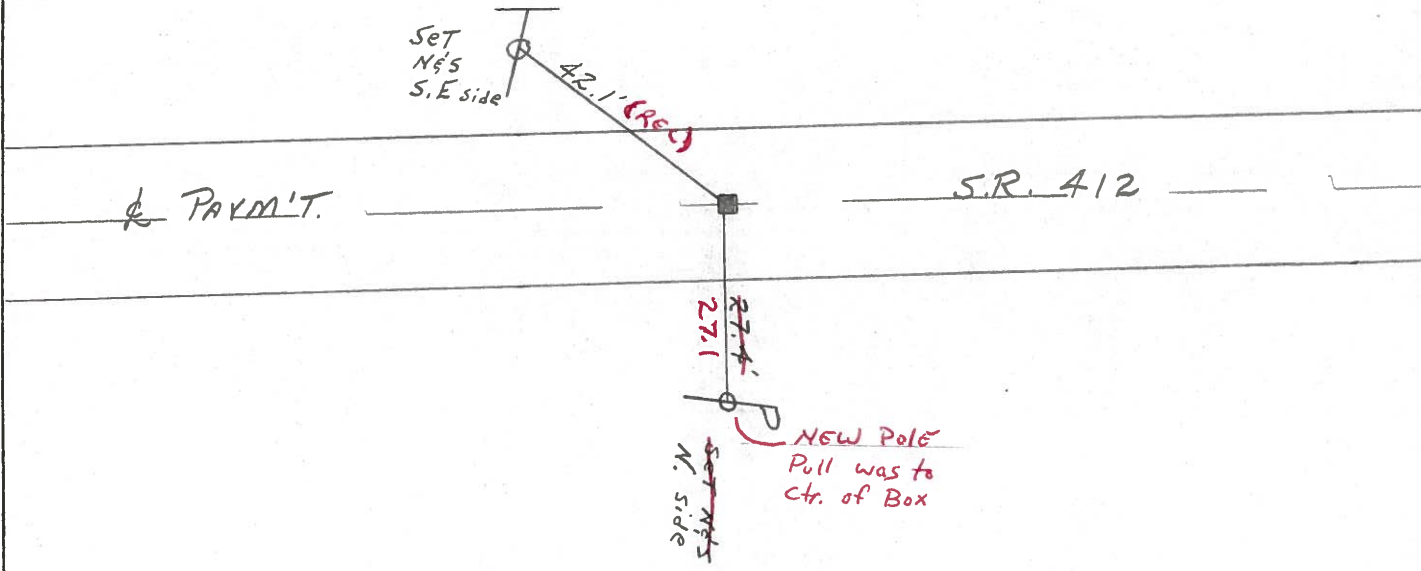
~~LEFT - C. PAV'T. - RIGHT~~ ON

10' TO RT. EDGE PAVEMENT

S.L.M. 65+48



PAINTED Mon. Box
8-2-1993
J.L.R.



Preventive Maintenance
Microsurfaced 2000
Existing Point Uncovered
~~Date~~ BOX ON SURFACE
7-24-00