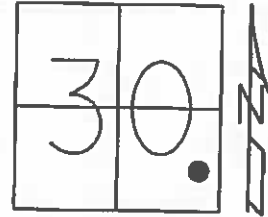


O.D.O.T. DISTRICT 2 SURVEY OFFICE (USE ONLY)

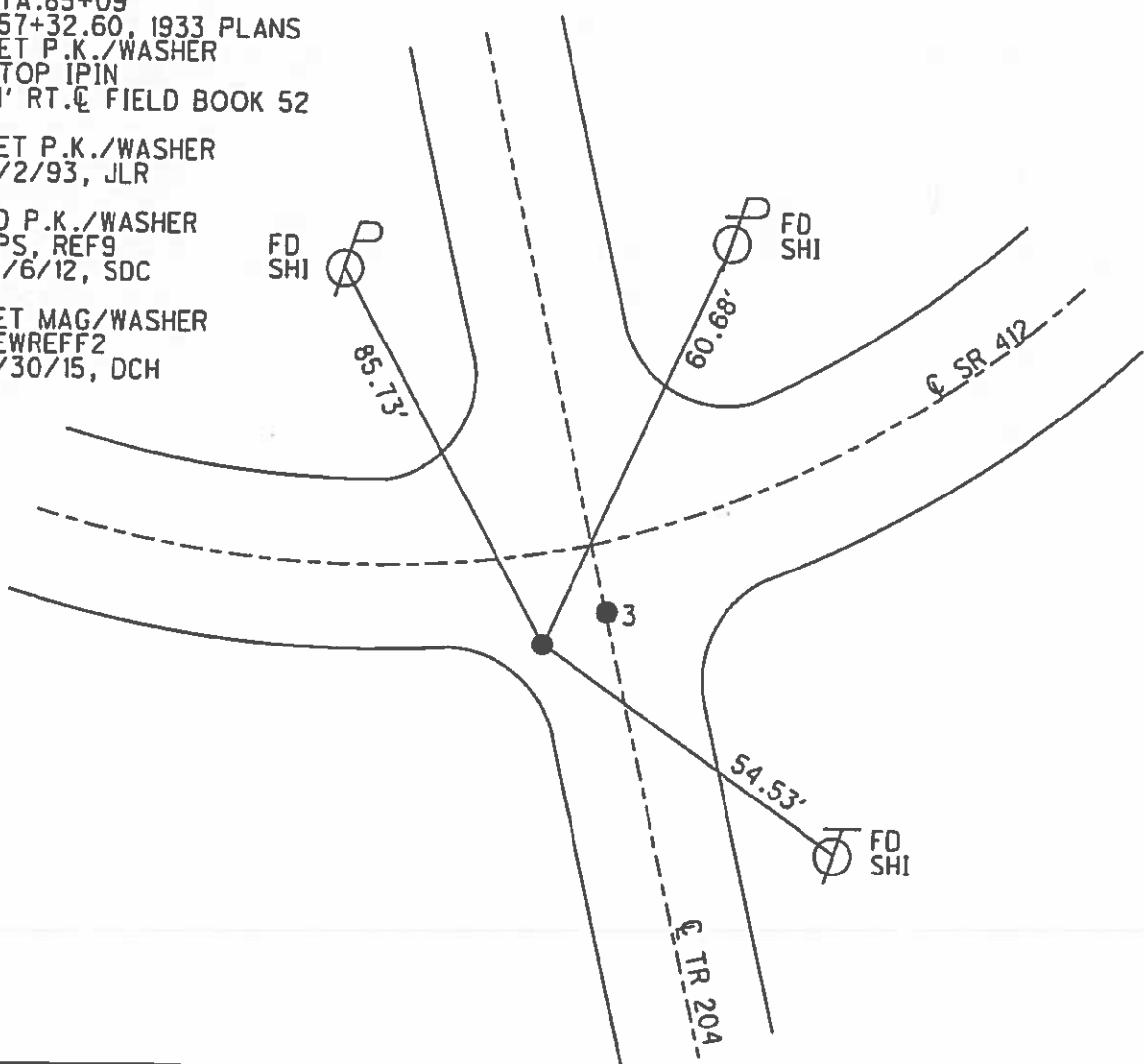
PERSONNEL \_\_\_\_\_ REFERENCE NO. 2 F SHEET 13 OF 33  
 NOTES LEU DATE 09-23-2014 ROUTE SR 412  
 H.C. HOMAN WEATHER SUNNY COUNTY SANDUSKY  
 R.C. LEU TEMP. 60° TOWNSHIP RILEY  
 SECTION 30  
 T 5 N R 16 E

TYPE MONUMENT MAG/WASHER  
 ON SURFACE - ~~BELOW~~ ON  
~~LEFT~~ - Q PAV'T - RIGHT 14'  
1' TO RT. EDGE PAVEMENT  
 S.L.M. 86+00.73  
 Grid: Northing: 617294.943 Easting: 1817283.675



RECORD: 9/27/1984  
 STA. 85+09  
 757+32.60, 1933 PLANS  
 SET P.K./WASHER  
 ATOP IPIN  
 14' RT. Q FIELD BOOK 52  
 SET P.K./WASHER  
 8/2/93, JLR  
 FD P.K./WASHER  
 GPS, REF9  
 12/6/12, SDC  
 SET MAG/WASHER  
 NEWREFF2  
 6/30/15, DCH

DIST. 2F-3 = 16.67'



# O.D.O.T. DISTRICT 2 SURVEY OFFICE

PERSONNEL

REFERENCE NO. 3

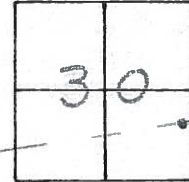
SHEET 9 OF 21

NOTES CHENEY  
 H.C. RIPPLE  
 R.C. BARBOUR  
GEYMAN

DATE 4-28-93  
 WEATHER SUNNY  
 TEMP. 55°

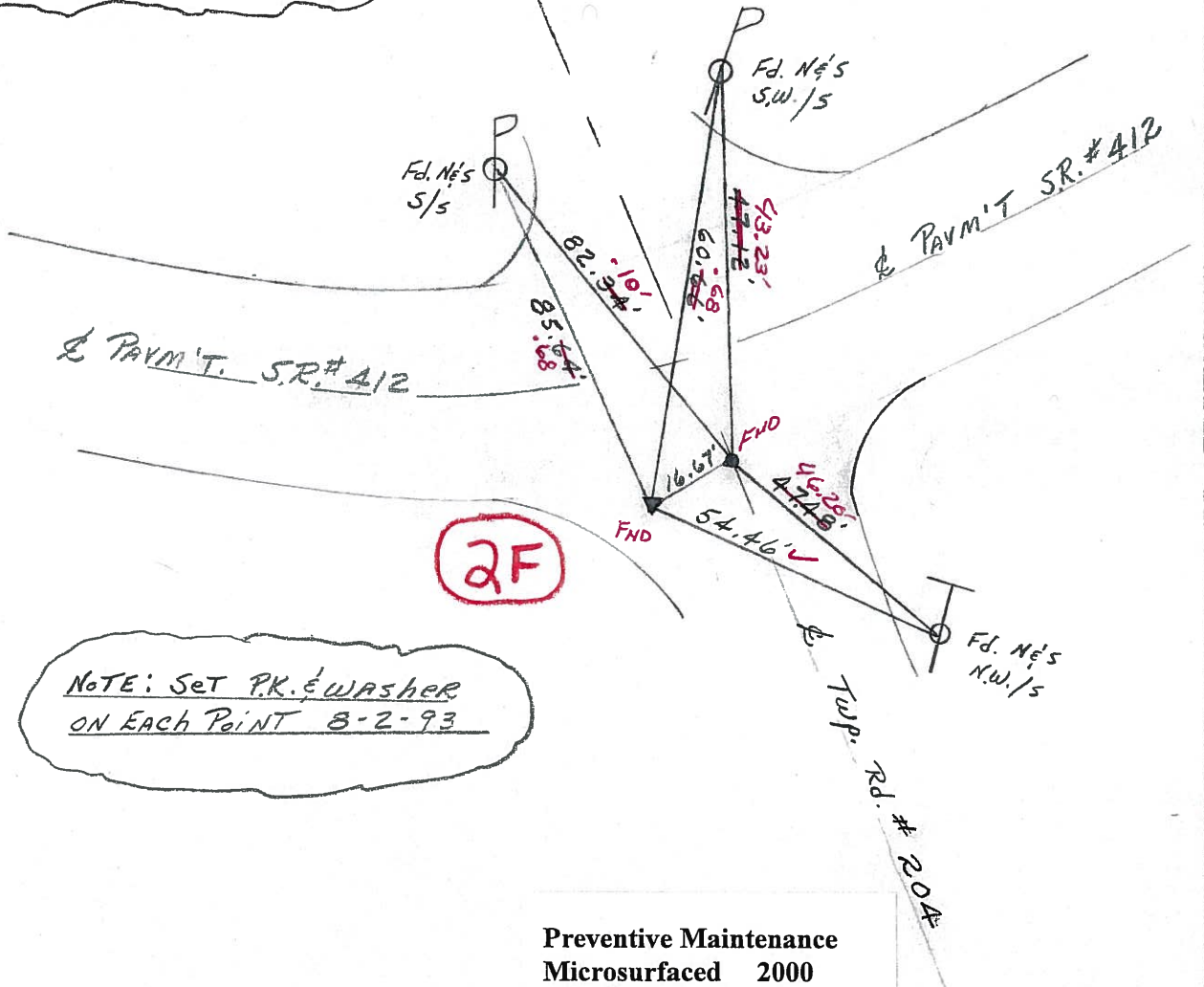
ROUTE SR#412  
 COUNTY SANDUSKY  
 TOWNSHIP RILEY  
 SECTION 30  
T5 N R 16 E

TYPE MONUMENT Fd. 1" I PIN  
 ON SURFACE - BELOW 1" DEEP  
 LEFT- & PAV'T. - RIGHT 11'  
1' RT TO RT EDGE PAVEMENT  
 S.L.M. 85+26



Record: 9-27-84 85+26  
 Set P.K. & WASHER ATOP  
 IRON PIPE ATOP IRON PIN 11' RT. & PAVM'T.  
 POINT APPEARS TO BE ON N-S SEC. LINE

Record: 9-27-84 85+09  
 757+32.60 (1933 PLANS)  
 Set P.K. & WASHER ATOP IRON ROD  
 14' E RT. OF & PAVEMENT



NOTE: SET P.K. & WASHER  
 ON EACH POINT 8-2-93

Preventive Maintenance  
 Microsurfaced 2000  
 Existing Point Uncovered  
 Date 7-24-2000

County Sandusky S.R. #412

Date 9/27/84

Township Riley

Weather overcast - windy - rain

Section 30

Temp. 54°

T5N, R16E

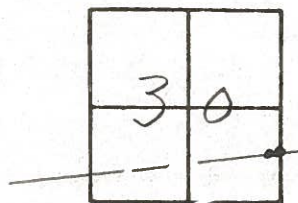
Personnel Cronin

Ripple

Geyman

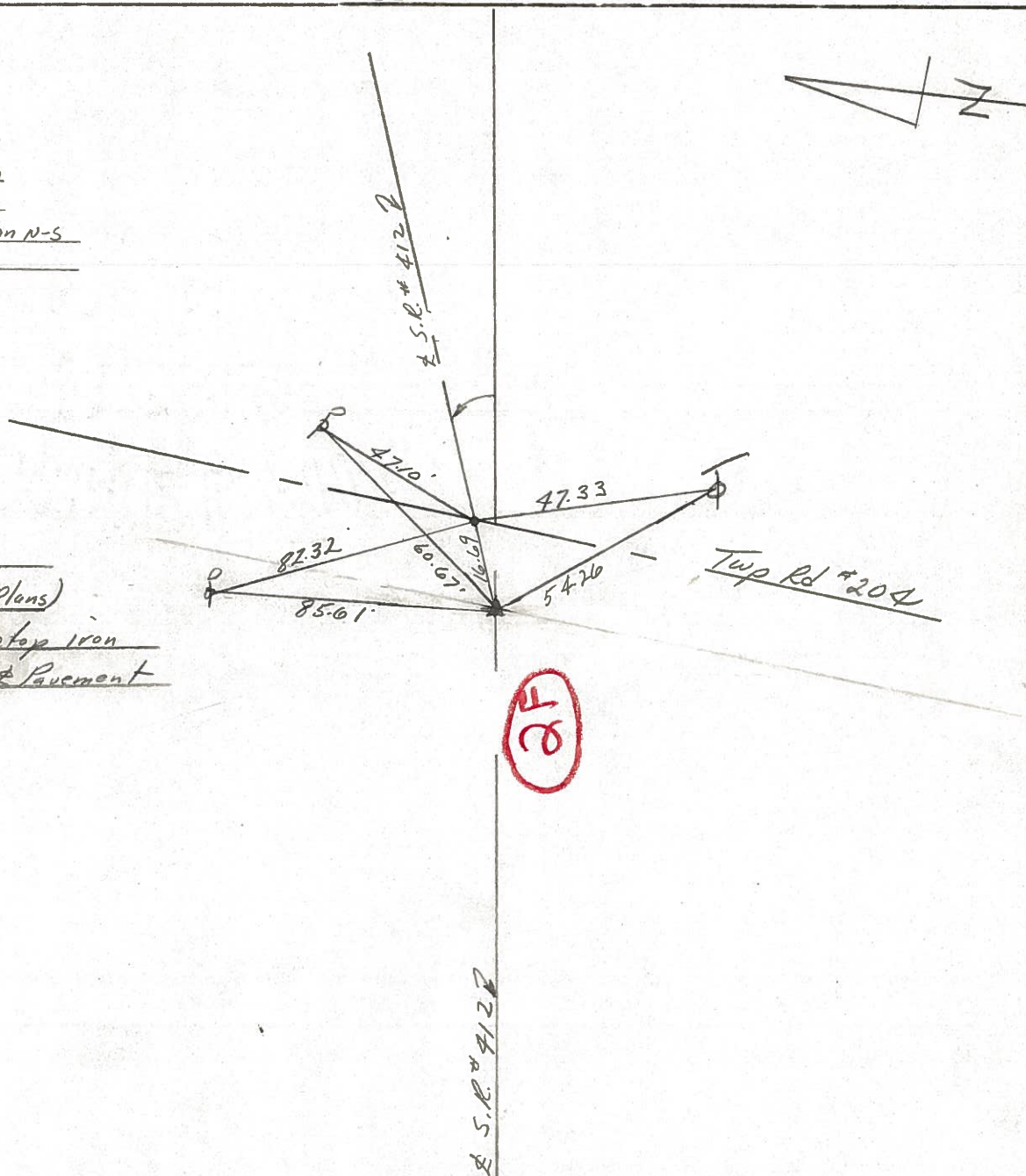
Barbour

#  
3



set P.K. & washer atop  
iron pipe atop iron pin  
11' Rt. & Pavement  
point appears to be on N-S  
section line

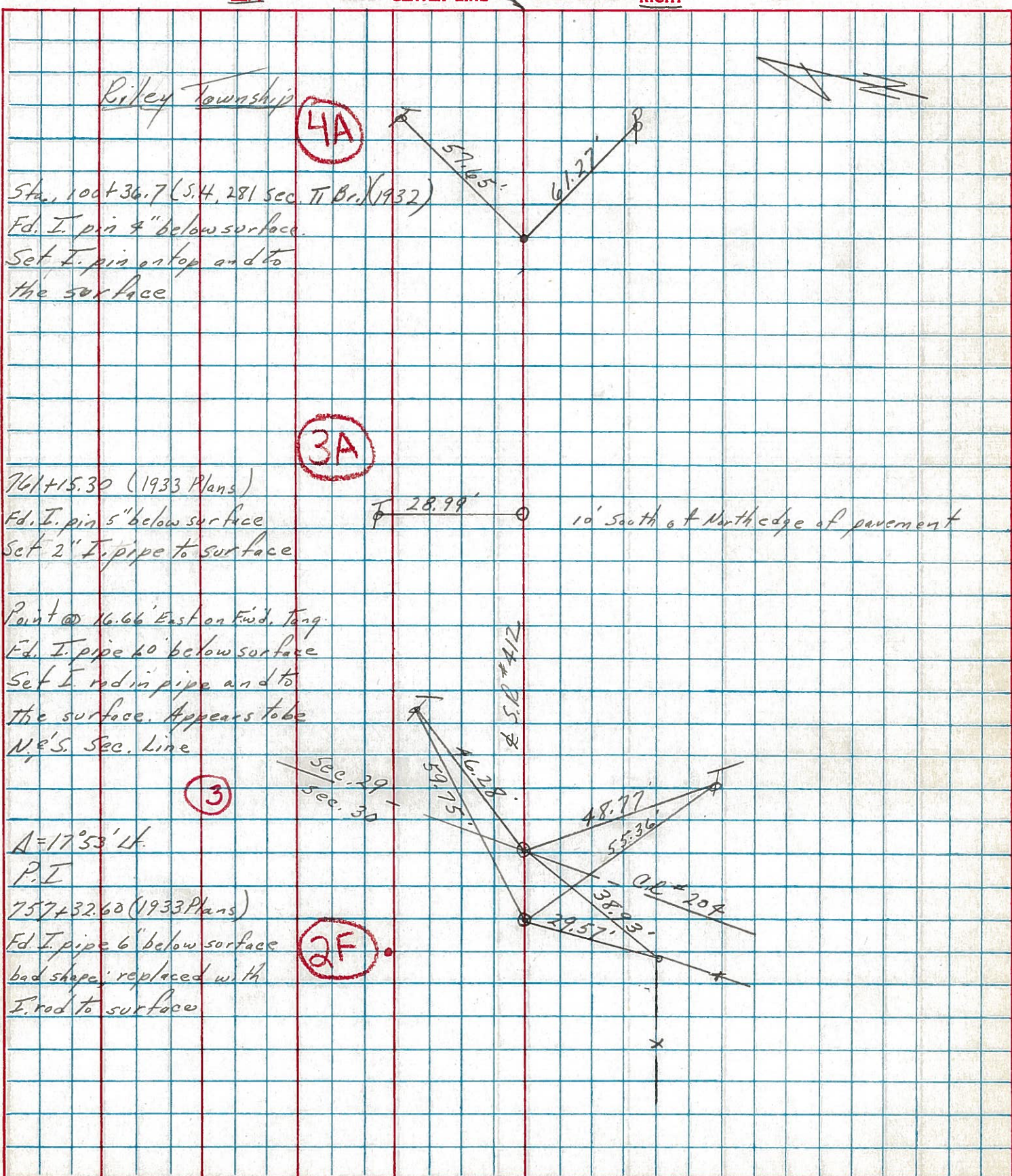
P.T. - A = 17°53' Lt.  
757+32.60 (1933 Plans)  
set P.K. & washer atop iron  
rod 14' Rt. of & Pavement





PERSONNEL	TITLE	PERSONNEL	TITLE	COUNTY	DATE	WEATHER	TEMP.
Cronin		Schneider		Sandusky	8/23/74	sunny	83°
Ash		Mosser		S. R. #412			
Ripple		Barbour					
Geyman				SEC. 332			

DESCRIPTION Ties for Control Points JOB NO. \_\_\_\_\_





PERSONNEL	TITLE	PERSONNEL	TITLE	COUNTY	DATE
<u>Schneider</u>		<u>Potts</u>		<u>Sandusky</u>	<u>Jan. 1968</u>
<u>Mosser</u>				S. R. <u>412</u>	WEATHER
<u>Barbour</u>				SEC. <u>N.E. of Fremont</u>	TEMP.
<u>Redding</u>					
DESCRIPTION	<u>Ties for Control Points</u>				JOB NO.

