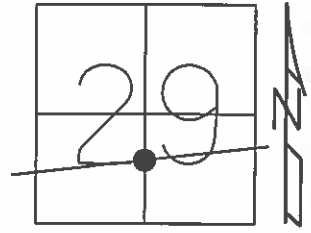


O.D.O.T. DISTRICT 2 SURVEY OFFICE (USE ONLY)

PERSONNEL \_\_\_\_\_ REFERENCE NO. 4 SHEET 16 OF 33  
 NOTES LEU DATE 09-23-2014 ROUTE SR 412  
 H.C. HOMAN WEATHER SUNNY COUNTY SANDUSKY  
 R.C. LEU TEMP. 65° TOWNSHIP RILEY  
 \_\_\_\_\_ SECTION 29  
 \_\_\_\_\_ T 5 N R 16 E

TYPE MONUMENT P.K.NAIL  
 ON SURFACE - ~~BELOW~~ ON  
 LEFT - ☉ PAV'T - ~~RIGHT~~ 4.4'  
6.5' TO LT. EDGE PAVEMENT  
 S.L.M. 113+52.65



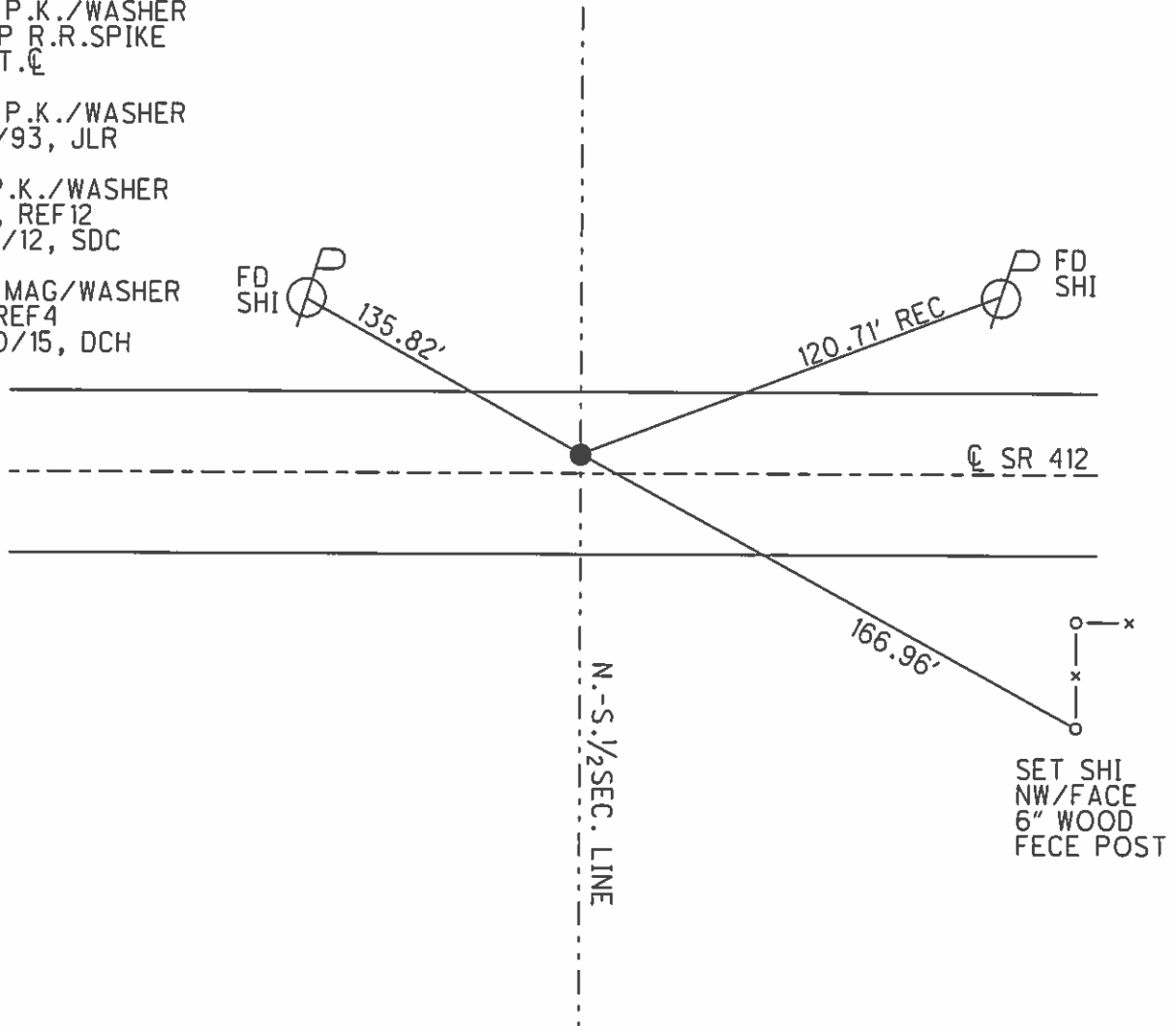
Grid: Northing: 617998.360 Easting: 1819944.182

RECORD: 9/27/1984  
 1/2 MI. ± ELY OF TR 204  
 POINT WAS SET BY OTHERS.  
 SET P.K./WASHER  
 ATOP R.R.SPIKE  
 4' LT.☉

SET P.K./WASHER  
 8/2/93, JLR

FD P.K./WASHER  
 GPS, REF12  
 12/6/12, SDC

SET MAG/WASHER  
 NEWREF4  
 6/30/15, DCH



O.D.O.T. DISTRICT 2 SURVEY OFFICE

PERSONNEL

REFERENCE NO. 4B

SHEET 11 OF 21

NOTES CHENEY

H.C. RIPPLE

R.C. BARBOUR

GEYMAN

DATE 4-28-93

WEATHER SUNNY

TEMP. 55°

ROUTE SR#412

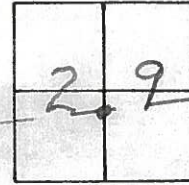
COUNTY SANDUSKY

TOWNSHIP RILEY

SECTION 29

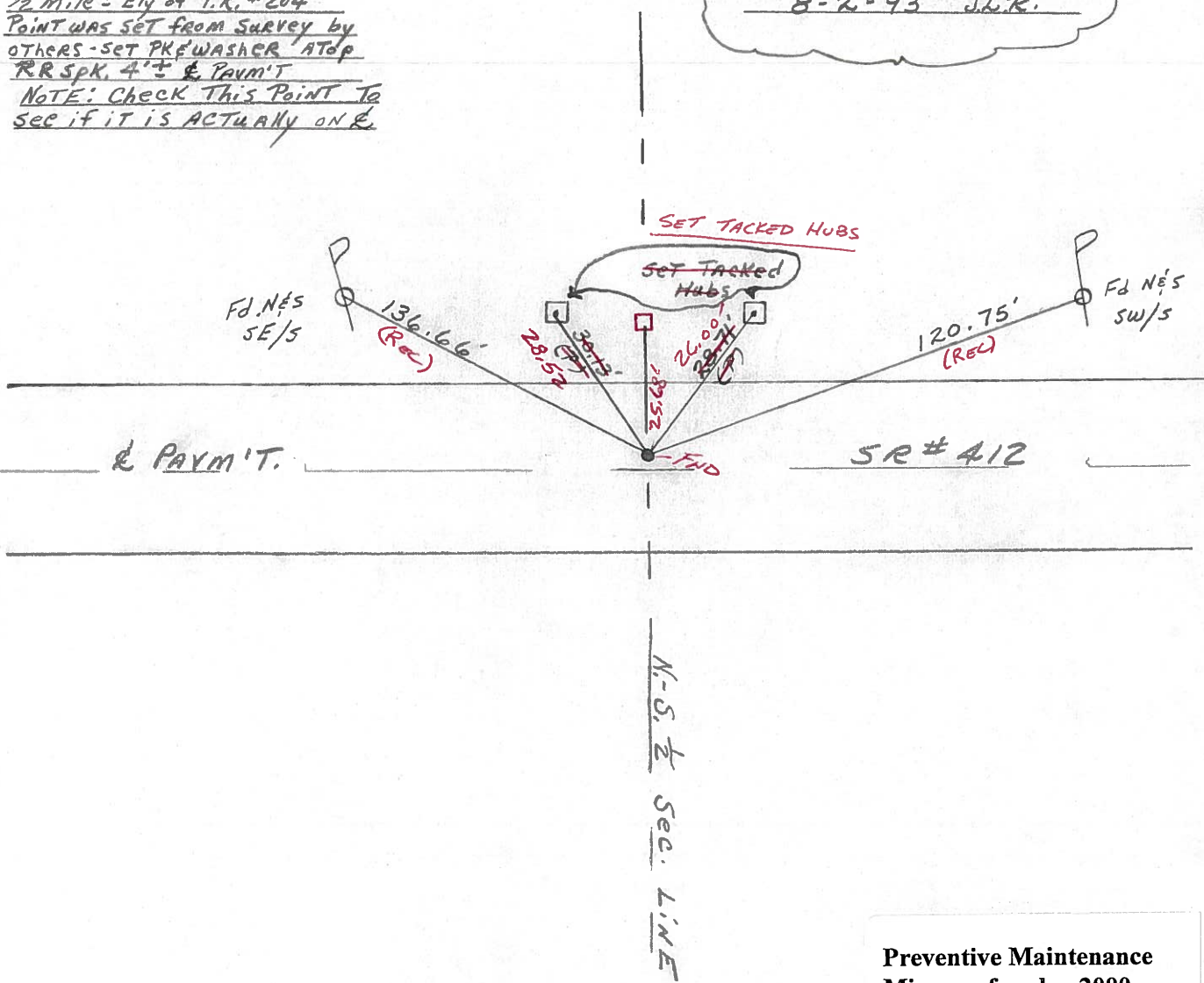
T. 5 N R. 16 E

TYPE MONUMENT Fd. PK. & WASHER  
 ON SURFACE - BELOW ON  
 LEFT - ℄ PAV'T. - RIGHT 3.5'  
6.5' TO LT. EDGE PAVEMENT  
 S.L.M. 112+59



Record: 9-27-84  
1/2 mile ± Ely of T.R. #204  
Point was set from survey by  
others - set PK & WASHER atop  
RR Spk. 4' ± & Pavm't  
NOTE: Check this point to  
see if it is ACTUALLY ON ℄.

NOTE: SET PK. & WASHER  
8-2-93 J.W.R.



Preventive Maintenance  
 Microsurfaced 2000  
 Existing Point Uncovered  
 Date 7-24-2000

County Sandusky S.R. #412

Township Riley

Section 29

T5N, R16E

Personnel Cronin

Ripple

Geyman

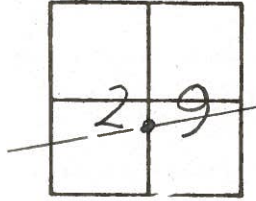
Barbour

Date 9/27/84

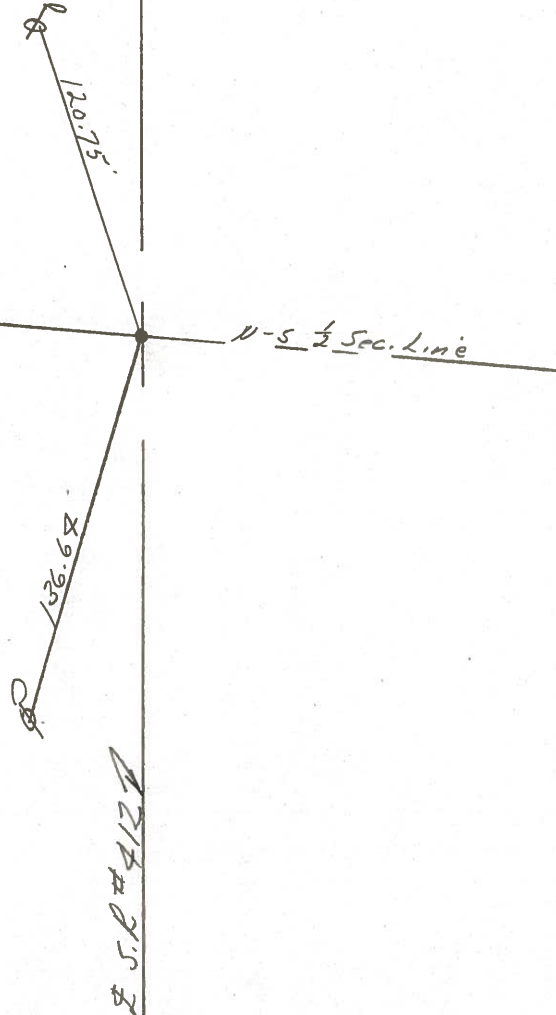
Weather overcast - windy - rain

Temp. 54°

(4)



1/2 mile ± Ely of T.R. #204  
Point was set from survey by  
others - set P.K. & washer  
atop R.R. spike - 4 ± Rt. & Point  
Note: check this point to  
see if it is actually on E



PERSONNEL	TITLE	PERSONNEL	TITLE
Cronin		Schneider	
Ash		Mosser	
Ripple		Barbour S.L.	
Geyman - S.L.			

COUNTY Sandusky

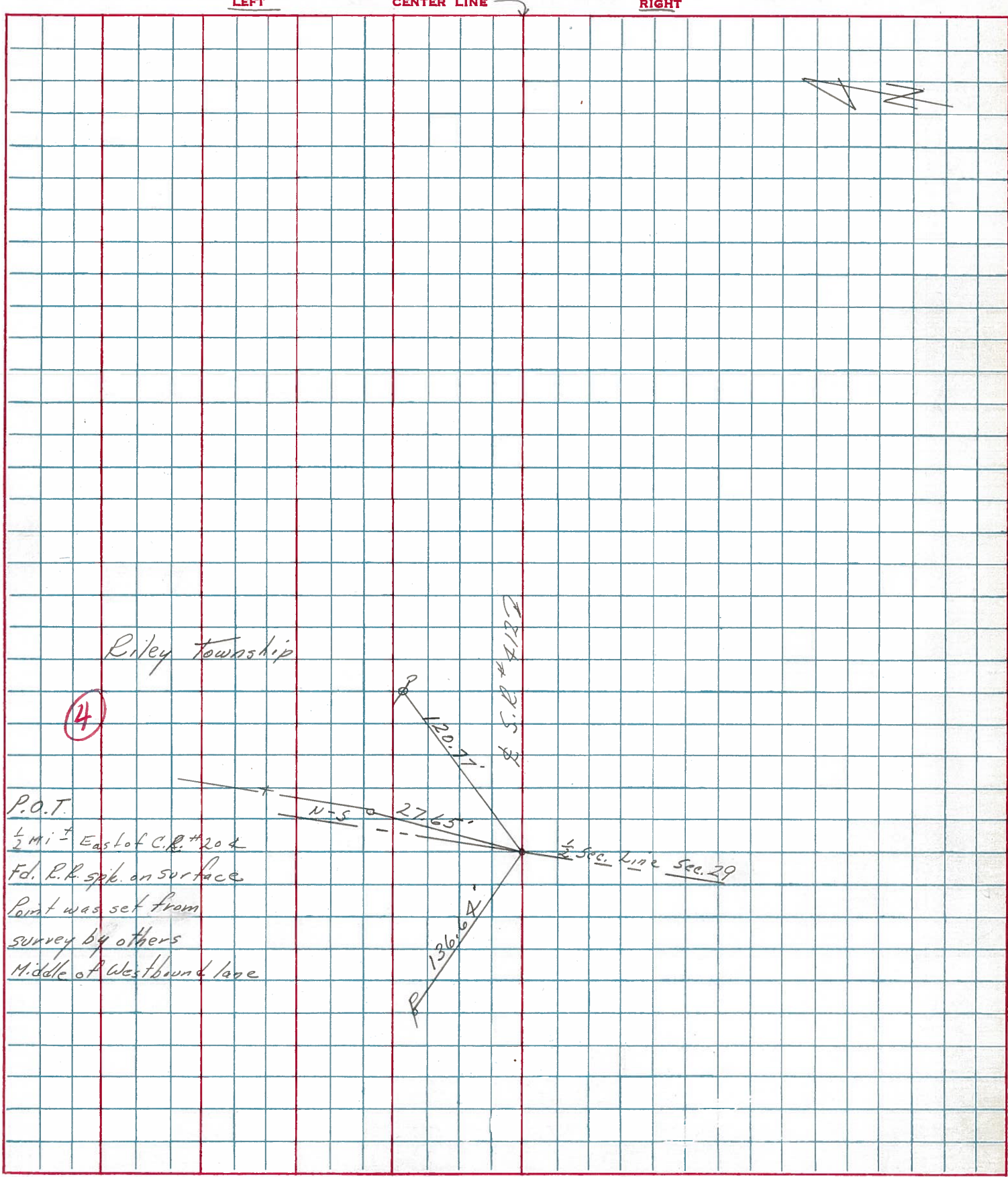
S. R. #412

WEATHER overcast

SEC. TEMP. 30°

DESCRIPTION Ties for Control Points

JOB NO.



4

Riley Township

P.O.T.

1/2 mi ± East of C.R. #20 &  
 Fd. R.R. spk. on surface  
 Point was set from  
 survey by others  
 Middle of Westbound lane

S.S.R. #412

120.77°

N-5° 27.65'

136.64°

1/2 Sec. Line Sec. 29