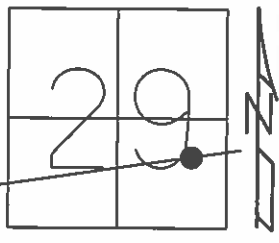


O.D.O.T. DISTRICT 2 SURVEY OFFICE (USE ONLY)

PERSONNEL _____ REFERENCE NO. 4 A SHEET 17 OF 33
 NOTES LEU DATE 09-23-2014 ROUTE SR 412
 H.C. HOMAN WEATHER SUNNY COUNTY SANDUSKY
 R.C. LEU TEMP. 65° TOWNSHIP RILEY
 _____ SECTION 29
 _____ T 5 N R 16 E

TYPE MONUMENT P.K./WASHER
 ON SURFACE - ~~BELOW~~ ON
~~LEFT - C~~ PAV'T - ~~RIGHT~~ ON
10' TO RT EDGE PAVEMENT
 S.L.M. 136+16.81



Grid: Northing: 618577.215 Easting: 1822133.098

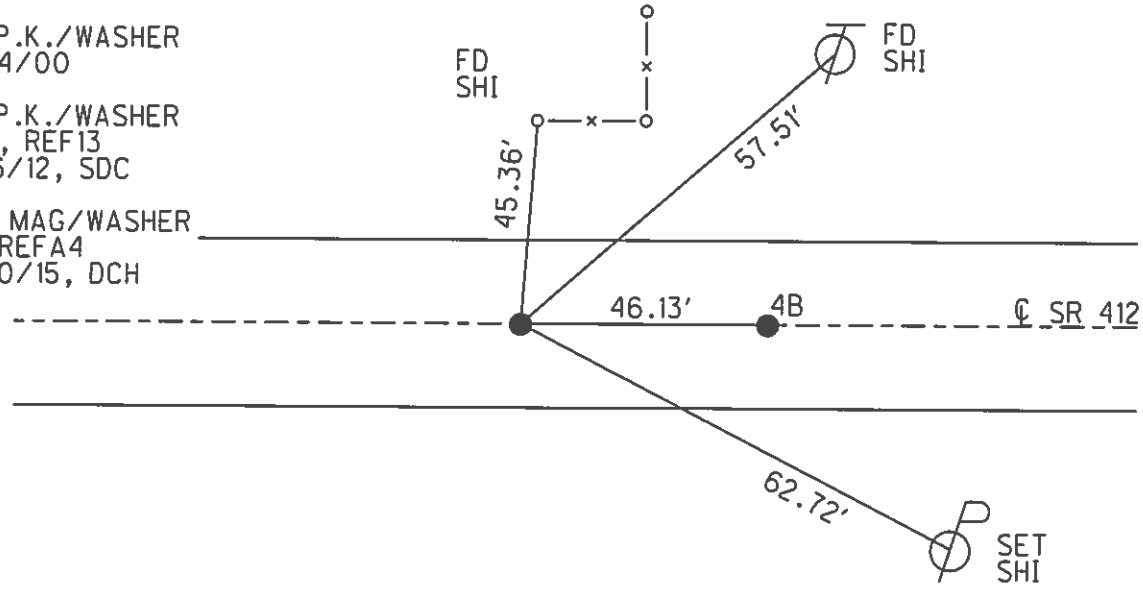
RECORD: 9/27/1984
 100+36.70. 1932 PLAN
 SET P.K./WASHER
 ATOP IPIN
 ATOP IPIN

SET P.K./WASHER
 8/2/93, JLR

FD P.K./WASHER
 7/24/00

FD P.K./WASHER
 GPS, REF13
 12/6/12, SDC

SET MAG/WASHER
 NEWREFA4
 6/30/15, DCH



O.D.O.T. DISTRICT 2 SURVEY OFFICE

PERSONNEL

REFERENCE NO. 4-A

SHEET 12 OF 21

NOTES CHENEY

H.C. RIPPLE

R.C. BARBOUR

GEYMAN

DATE 4-28-93

WEATHER SUNNY

TEMP. 55°

ROUTE SR#412

COUNTY SANDUSKY

TOWNSHIP RILEY

SECTION 29

T. 5 N R. 16 E

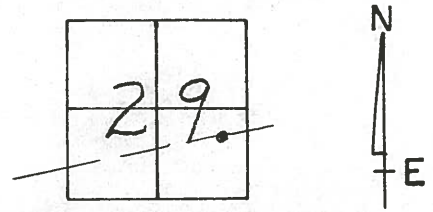
TYPE MONUMENT FD. PK. & WASHER

ON SURFACE - ~~BELOW~~ ON

~~LEFT - C~~ PAV'T. - ~~RIGHT~~ ON

10' TO RT. EDGE PAVEMENT

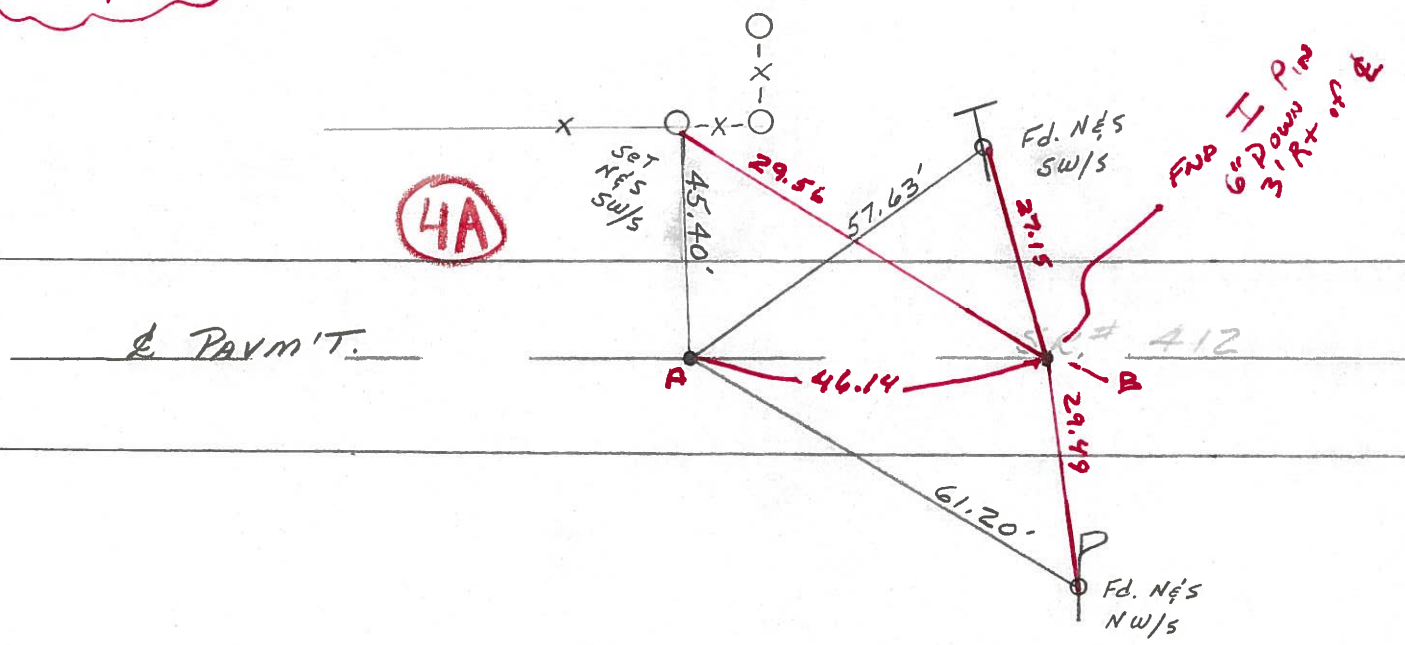
S.L.M. 135+24



Record: 9-27-84
 100+36.70 (SH. 281 Sec. T1 Br.)
 (1932) SET P.K. & WASHER
 A Top IRON PIN A Top IRON PIN

NOTE: 8-02-93
 SET P.K. & WASHER J.L.R.

RESET PT 'B'
 PK & WASHER
 7-24



Preventive Maintenance
 Microsurfaced 2000
 Existing Point Uncovered
 Date 7-24-00

County Sandusky S.R. # 412

Township Riley

Section 29

T 5 N, R 16 E

Personnel Cronin

Ripple

Geyman

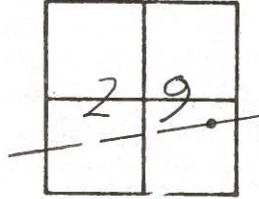
Barbour

Date 9/27/84

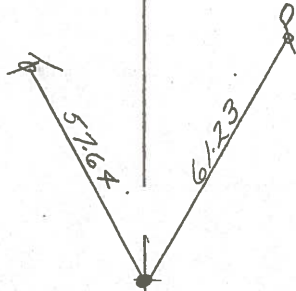
Weather overcast - windy - rain

Temp. 54°

4A



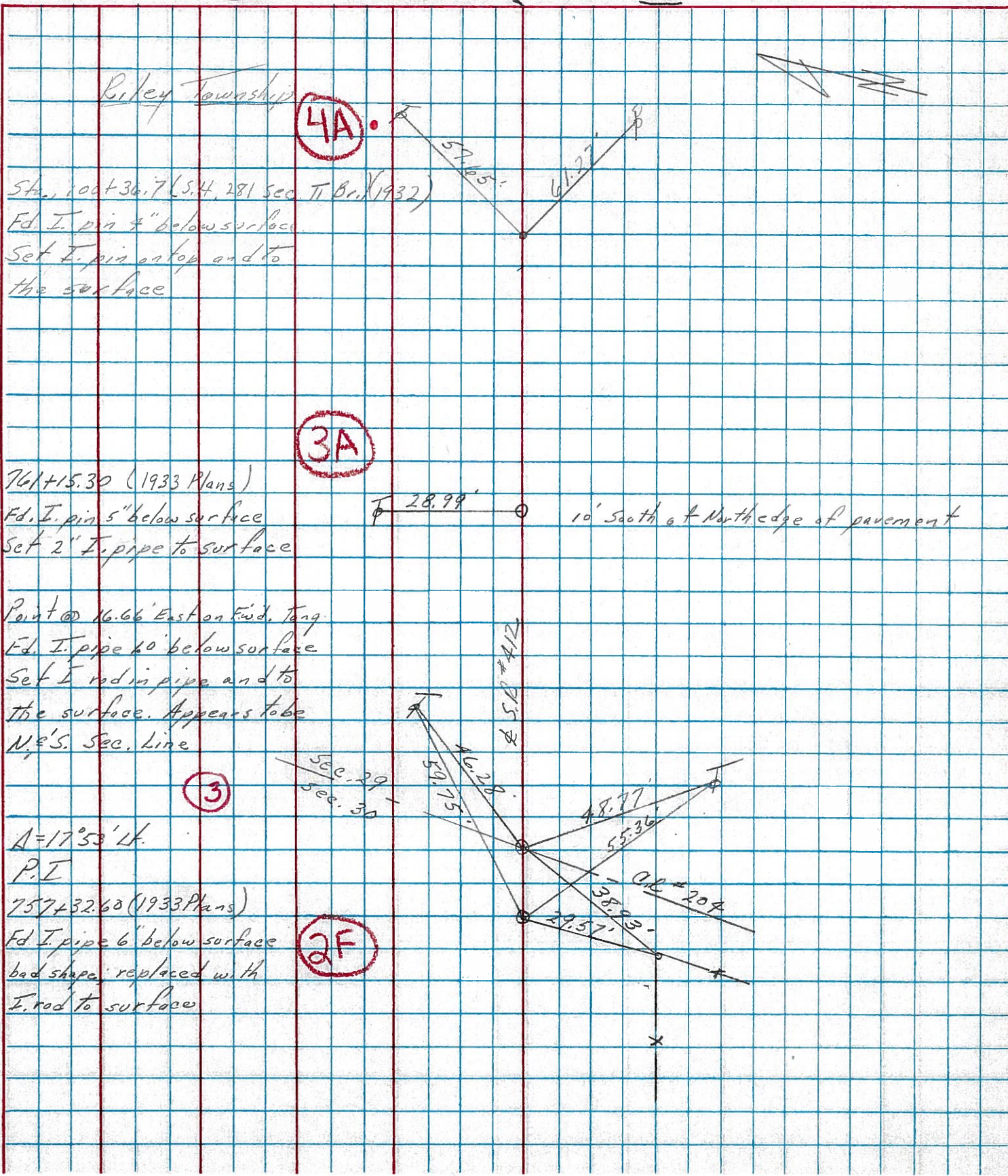
100 + 36.70 (S.H. 281 Sec. T1 Br)
(1932) set P.K. & washer
atop iron pin atop iron pin



S.R. # 412

PERSONNEL	TITLE	PERSONNEL	TITLE	COUNTY	DATE
<u>Cronin</u>		<u>Schneider</u>		<u>Sandusky</u>	<u>8/23/74</u>
<u>Ash</u>		<u>Messer</u>		S. R. # <u>412</u>	WEATHER <u>sunny</u>
<u>Kipple</u>		<u>Barbour</u>		SEC. <u>289</u>	TEMP. <u>83°</u>
<u>Geyman</u>					

DESCRIPTION Ties for Control Points JOB NO. _____



Riley Township

4A

Sta. 100+36.7 (S. 4, 281 Sec. Ti Br. (1932))
 Fd. I. pin 4" below surface
 Set I. pin on top and to the surface

3A

761+15.30 (1933 Plans)
 Fd. I. pin 5" below surface
 Set 2" I. pipe to surface

28.99' 10' South of North edge of pavement

Point @ 16.66' East on Fwd. Tang.
 Fd. I. pipe 10" below surface
 Set I. rod in pipe and to the surface. Appears to be N.E.S. Sec. Line

3

A = 17°53' Lt.
 P.I

2F

757+32.60 (1933 Plans)
 Fd. I. pipe 6" below surface
 bad shape; replaced with I. rod to surface

S.A. #412

OR #204

PERSONNEL	TITLE	PERSONNEL	TITLE	COUNTY	Sand	DATE	Jan. 1968
Schneider		Potts		S. R.	412	WEATHER	
Mossar				SEC.	N.E. of Fremont	TEMP.	
Barbour				DESCRIPTION	Ties for Control Points	JOB NO.	

