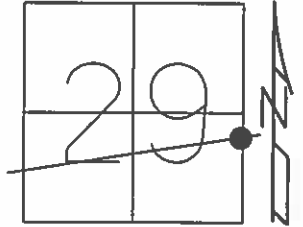


O.D.O.T. DISTRICT 2 SURVEY OFFICE (USE ONLY)

PERSONNEL _____ REFERENCE NO. 5 SHEET 19 OF 33
 NOTES LEU DATE 09-23-2014 ROUTE SR 412
 H.C. HOMAN WEATHER SUNNY COUNTY SANDUSKY
 R.C. LEU TEMP. 72° TOWNSHIP RILEY
 SECTION 29
 T 5 N R 16 E

TYPE MONUMENT MAG NAIL
 ON SURFACE - ~~BELOW~~ ON _____
~~LEFT~~ - ☉ PAV'T - RIGHT 3.6'
7.5' TO RT EDGE PAVEMENT
 S.L.M. 141+13.82
 Grid: Northing: _____ Easting: _____



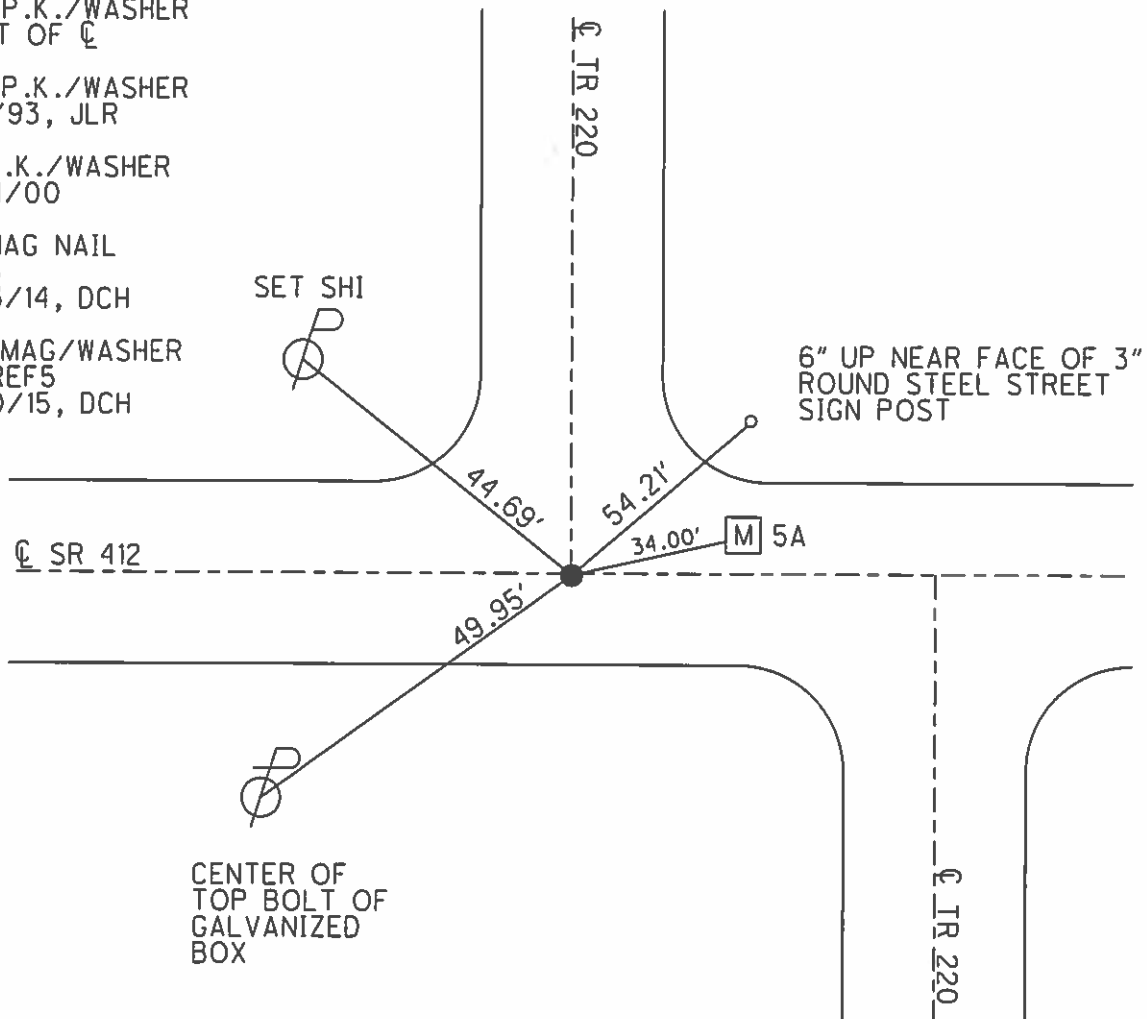
RECORD: 10/11/1984
 POINT ON N-S SEC. LINE
 FR/PRIVATE SURVEY MAY
 BE ON ARC OF CURVE.
 SET P.K./WASHER
 3' RT OF ☉

SET P.K./WASHER
 8/2/93, JLR

FD P.K./WASHER
 7/24/00

FD MAG NAIL
 REF5
 9/23/14, DCH

SET MAG/WASHER
 NEWREF5
 6/30/15, DCH



CENTER OF
 TOP BOLT OF
 GALVANIZED
 BOX

O.D.O.T. DISTRICT 2 SURVEY OFFICE

PERSONNEL

REFERENCE NO. 50

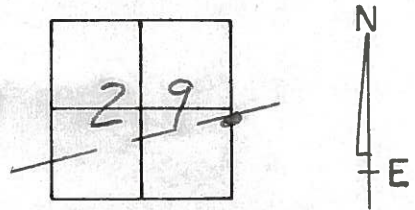
SHEET 13 OF 21

NOTES CHENEY
 H.C. RIPPLE
 R.C. BARBOUR
GEYMAN ✓

DATE 4-28-93
 WEATHER PART SUNNY
 TEMP. 55°

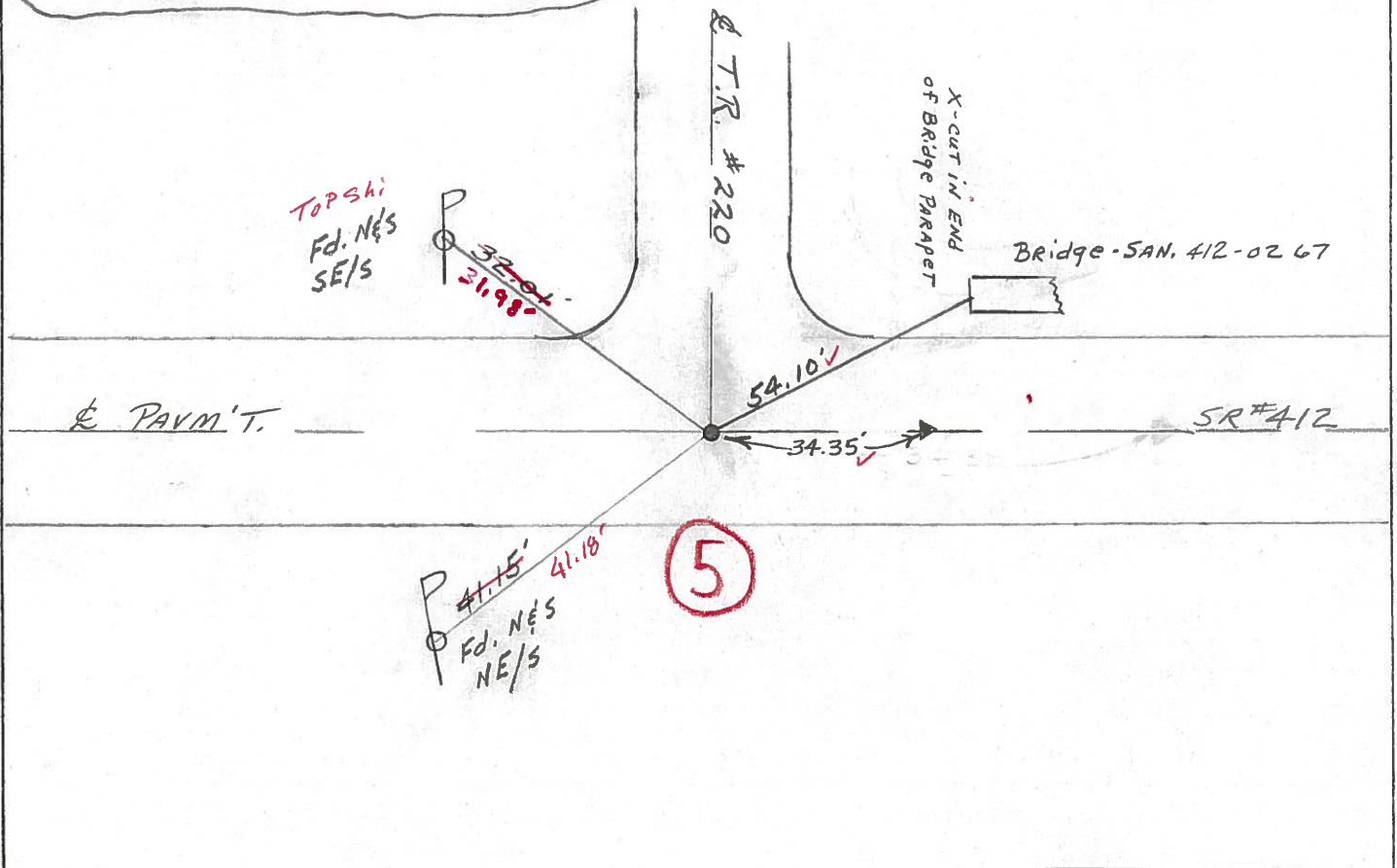
ROUTE SR#412
 COUNTY SANDUSKY
 TOWNSHIP RILEY
 SECTION 29
T.5. N. R. 16. E

TYPE MONUMENT Fd. P.K. & Washer
 ON SURFACE - ~~BELOW~~ ON
~~LEFT - & PAV'T. - RIGHT~~ 2.5'
7.5' TO RT. EDGE PAVEMENT
 S.L.M. 139+90



Record: 10-11-84
Point on N-S Sec. Line
FROM PRIVATE SURVEY MAY BE
ON ARC OF CURVE - SET P.K. & WASHER
3' RT. & PAVM'T.

NOTE: 8-02-93
SET P.K. & WASHER JLR.



Preventive Maintenance
 Microsurfaced 2000
 Existing Point Uncovered
 Date 7-24-2000

County Sandusky S.R. #412

Date 10/11/84

Township Riley

Weather sunny

Section 29

Temp. 60°

T₅N, R₁₆E

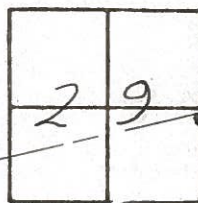
Personnel Cronin

Ripple

Geyman

Barbour

5



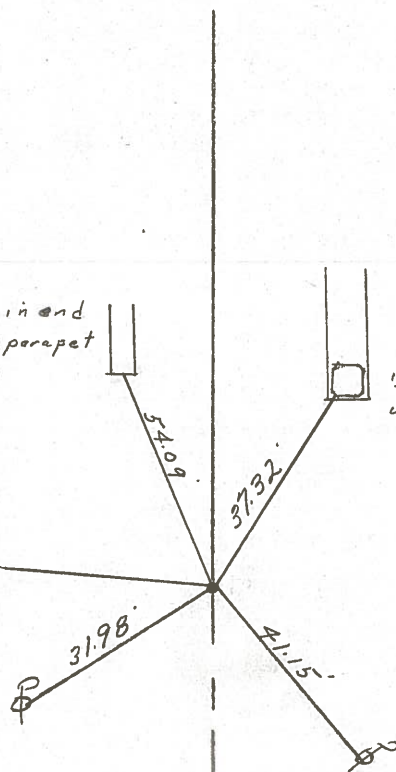
Point on N-S Section
line from private survey
May be on arc of curve
set P.K. & Washer
3' Rt. & Pavement

T.R. #220

4' cut in end of bridge parapet

Bridge - San. 412-02-67

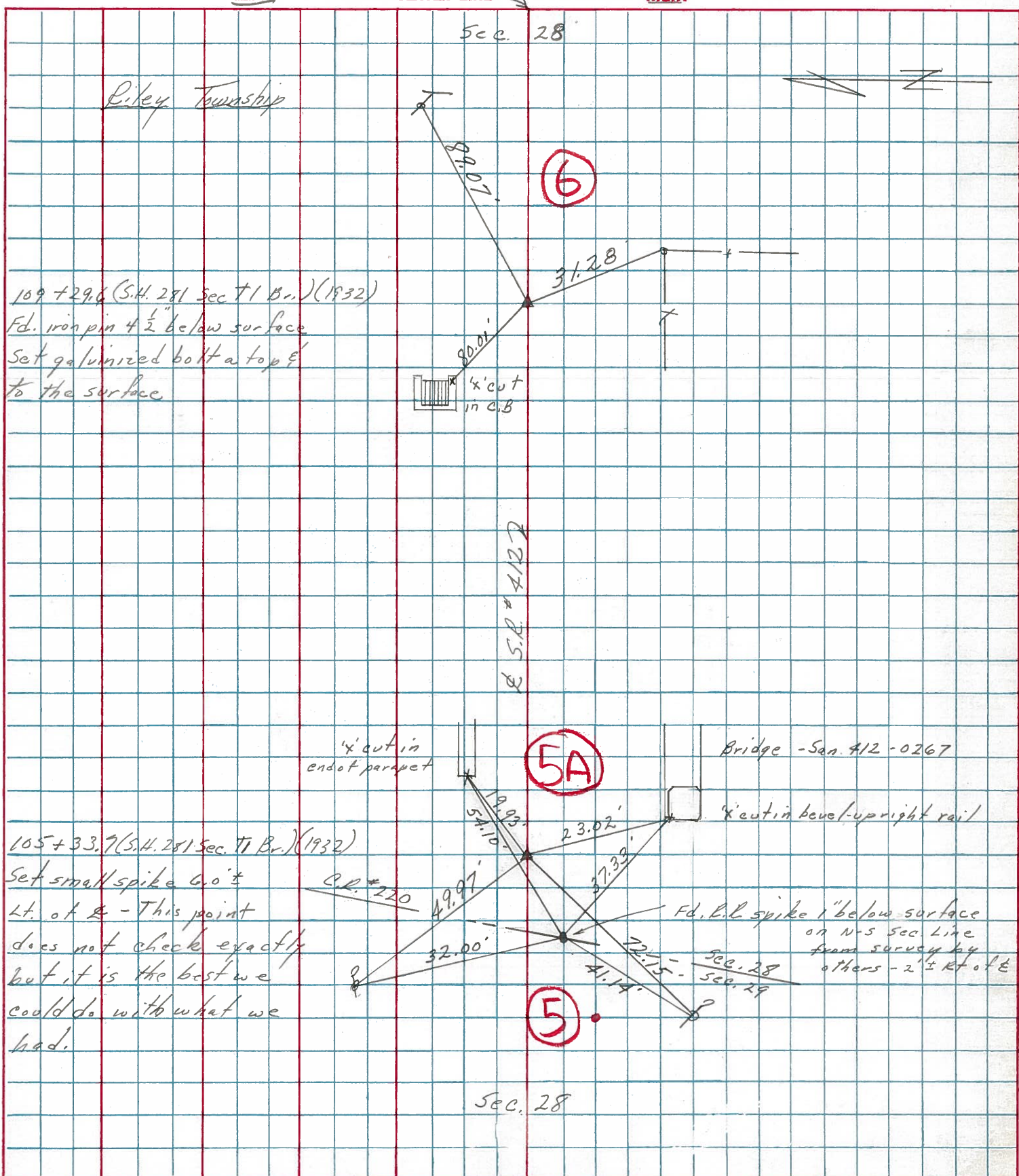
4' cut in bevel of upright rail



PERSONNEL	TITLE	PERSONNEL	TITLE
Cronin		Schneider	
Ash		Mosser	
Ripple		Barbour S.L.	
Geyman S.L.			

COUNTY Sandusky DATE Tied 2/4/75
Drawn 1/30/75
 S. R. # 412 WEATHER overcast
 SEC. _____ TEMP. 30°

DESCRIPTION Ties for Control Points JOB NO. _____



109 + 29.6 (S.H. 281 Sec. T1 Br.) (1932)
 Fd. iron pin 4 1/2" below surface
 Set galvanized bolt a top &
 to the surface

105 + 33.7 (S.H. 281 Sec. T1 Br.) (1932)
 Set small spike 6.0" ±
 Lt. of E - This point
 does not check exactly
 but it is the best we
 could do with what we
 had.

Fd. L.R. spike 1" below surface
 on N-S Sec. Line
 from survey by
 Sec. 28
 Sec. 29
 others - 2' ± Rt of E