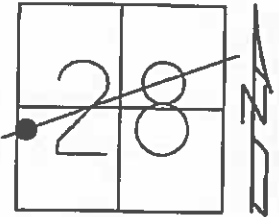


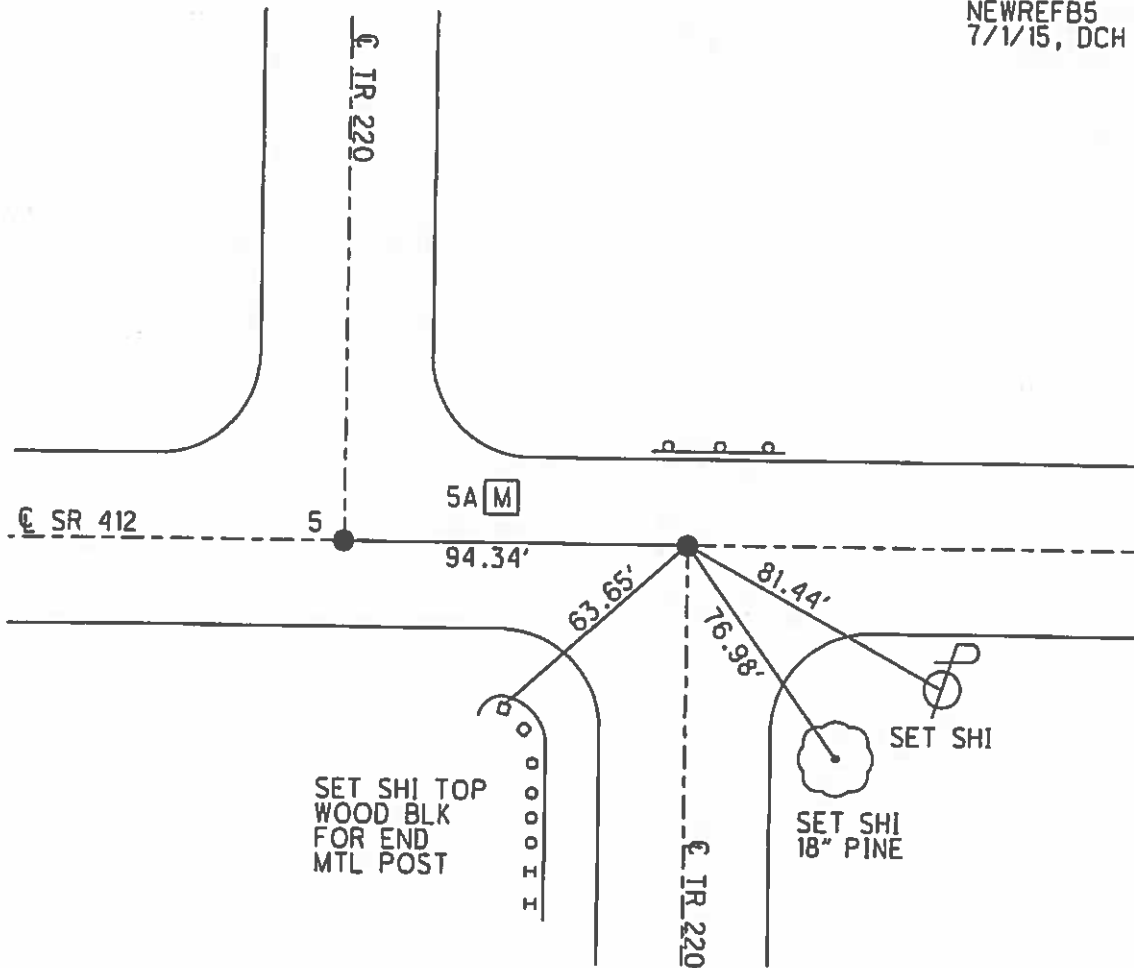
O.D.O.T. DISTRICT 2 SURVEY OFFICE (USE ONLY)

PERSONNEL _____ REFERENCE NO. 5 B SHEET 21 OF 33
 NOTES LEU DATE 7/1/15 ROUTE SR 412
 H.C. HOMAN WEATHER SUNNY COUNTY SANDUSKY
 R.C. LEU TEMP. 70° TOWNSHIP RILEY
 _____ SECTION 28
 _____ T 5 N R 16 E

TYPE MONUMENT MAG/WASHER
 ON SURFACE - ~~BELOW~~ ON _____
 LEFT - ☉ PAV'T - ~~RIGHT~~ ON _____
 _____ TO _____ EDGE PAVEMENT
 S.L.M. 142+08.16
 Grid: Northing: _____ Easting: _____



SET MAG/WASHER
 NEWREFB5
 7/1/15, DCH



O.D.O.T. DISTRICT 2 SURVEY OFFICE

PERSONNEL

REFERENCE NO. 5-A

SHEET 14 OF 21

NOTES CHENEY

H.C. RIPPLE

R.C. BARBOUR

GEYMAN

DATE 4-28-93

WEATHER PART SUNNY

TEMP. 55°

ROUTE SR#412

COUNTY SANDUSKY

TOWNSHIP RILEY

SECTION 28

T. 5 N R. 16 E

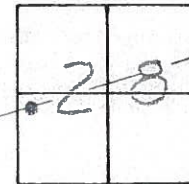
TYPE MONUMENT Fd. PK. & WASHER

ON SURFACE - BELOW ON

LEFT - CL PAV'T. - RIGHT 6.5'

3.5' TO LT. EDGE PAVEMENT

S.L.M. 140 + 23

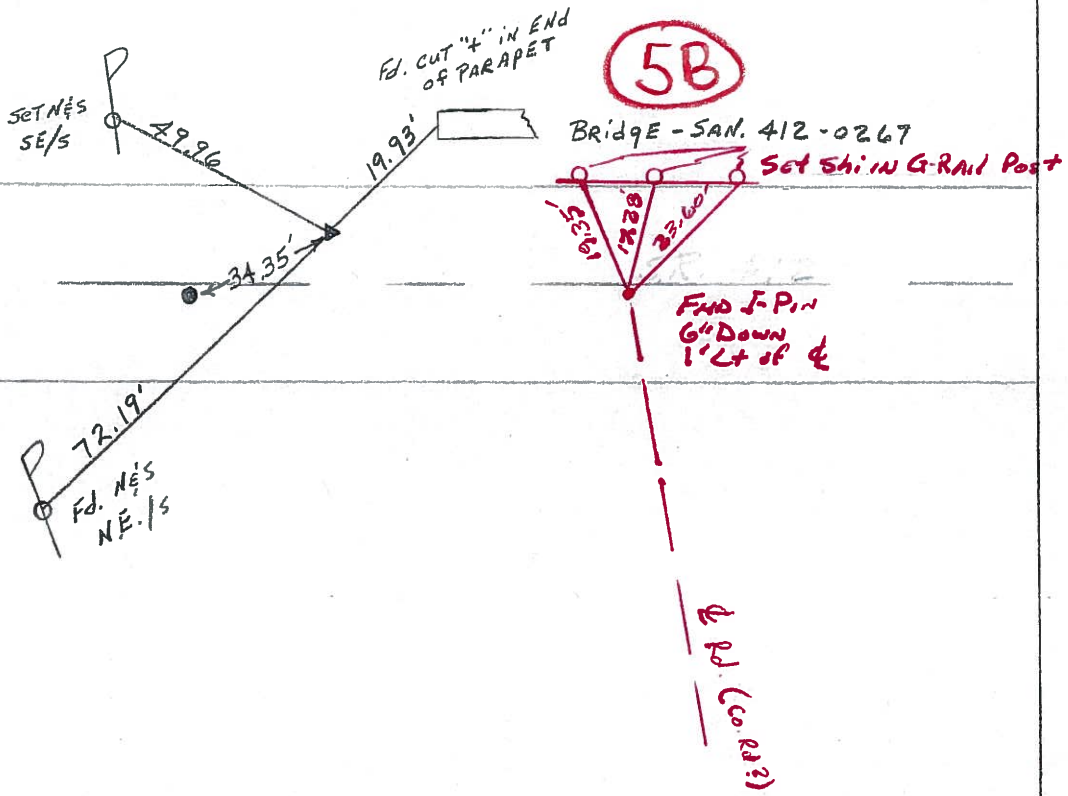


Record: 10-11-84
105+33.70 (SH. 281 Sec. T, BR.)
(1932) Set PK. & WASHER ATOP
Boat Spike 7.0'± LT. & Pavement

Note: Set PK. & WASHER
8-2-93 JLR.

5B

CL PAVM'T.
SR 412



Preventive Maintenance
 Microsurfaced 2000
 Existing Point Uncovered
 Date 7-24-2000