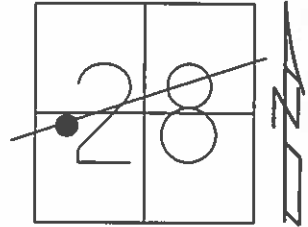


O.D.O.T. DISTRICT 2 SURVEY OFFICE (USE ONLY)

PERSONNEL _____ REFERENCE NO. 6 SHEET 22 OF 33

NOTES HOMAN DATE 10-09-2014 ROUTE SR 412
 H.C. WESTFALL WEATHER PARTLY SUNNY COUNTY SANDUSKY
 R.C. RHOADES TEMP. 55° TOWNSHIP RILEY
LEU SECTION 28
 T 5 N R 16 E

TYPE MONUMENT P.K./WASHER
 ON SURFACE - ~~BELOW~~ ON _____
~~LEFT~~ - CL PAV'T - ~~RIGHT~~ ON _____
9' TO RT EDGE PAVEMENT
 S.L.M. 145+10.60



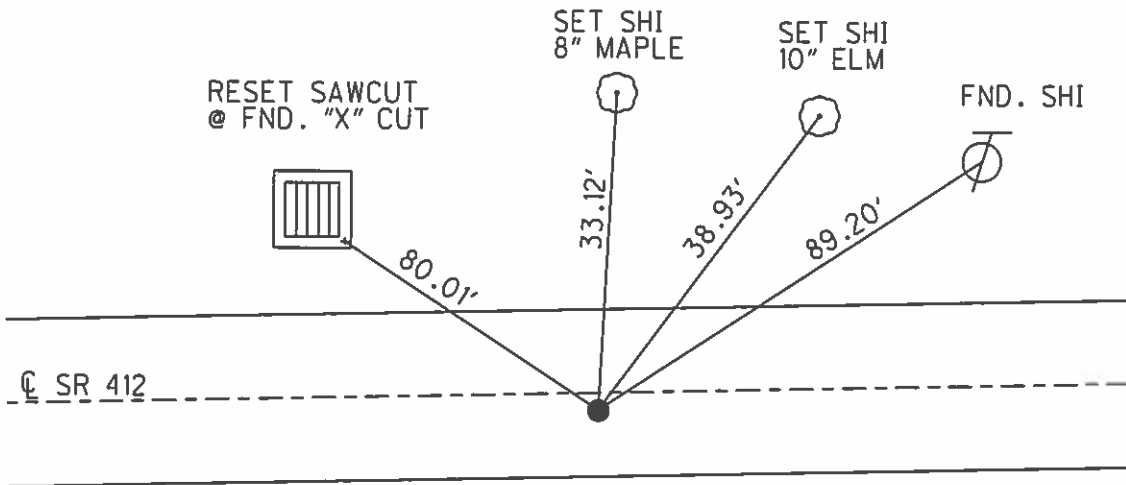
Grid: Northing: 618757.593 Easting: 1823006.085

RECORD: 10-11-1984
 109+29.60 (S.H. 281 SEC. T. BR.)
 1932 SET PK & WASHER ATOP
 GALVINIZED BOLT ATOP I. PIN

SET P.K./WASHER
 8/2/93, JLR

FD P.K./WASHER
 REF16
 12/11/12, JMR

SET MAG/WASHER
 NEWREF6
 7/1/15, DCH



O.D.O.T. DISTRICT 2 SURVEY OFFICE

PERSONNEL

NOTES CHENEY
 H.C. RIPPLE
 R.C. BARBOUR
GEYMAN

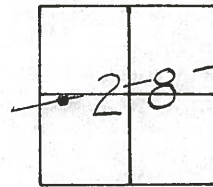
REFERENCE NO. 6

DATE 4-28-93
 WEATHER PART SUNNY
 TEMP. 55°

SHEET 15 OF 21

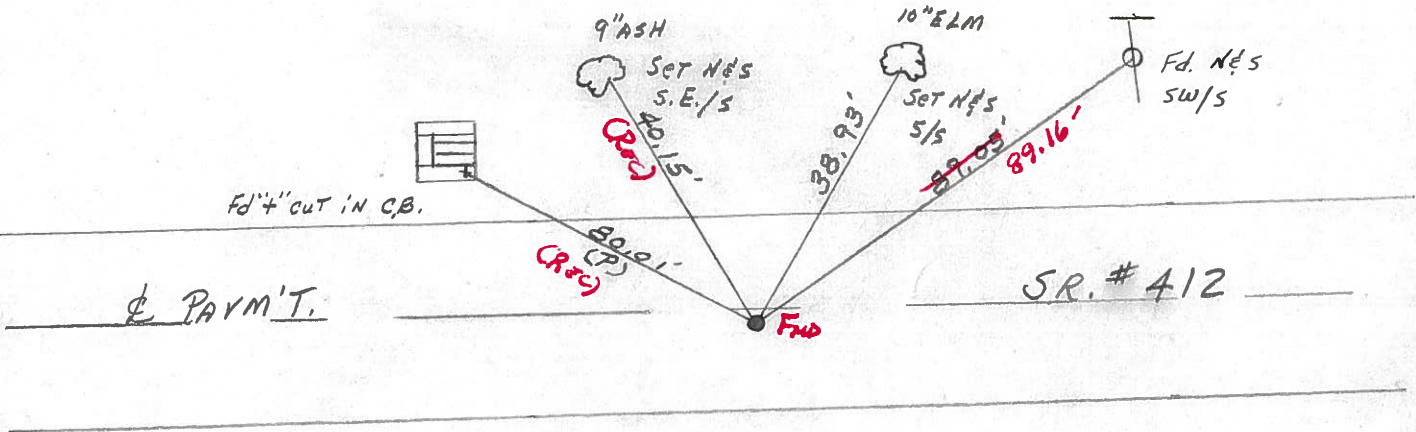
ROUTE SR#412
 COUNTY SANDUSKY
 TOWNSHIP RILEY
 SECTION 28
 T. 5 N R. 16 E

TYPE MONUMENT Fd. P.K. & Washer
 ON SURFACE - ~~BELOW~~ ON
 LEFT - ~~C~~ PAV'T. - RIGHT 1'
9' TO RT. EDGE PAVEMENT
 S.L.M. 144+20



Record: 10-11-84
 109+29.60 (SH. 281 Sec T. BR.)
 1932 SET PK & WASHER ATOP
 GALVANIZED BOLT ATOP I. PIN.

NOTE: 8-2-93
 SET P.K. & WASHER JLR.



Preventive Maintenance
 Microsurfaced 2000
 Existing Point Uncovered
 Date 7-24-2000

County Sandusky S.R. #412

Date 10/11/84

Township Riley

Weather sunny

Section 28

Temp. 65°

T5N, R16E

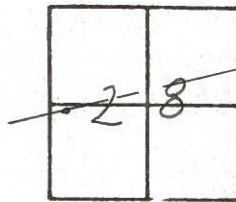
Personnel Cronin

Barbour

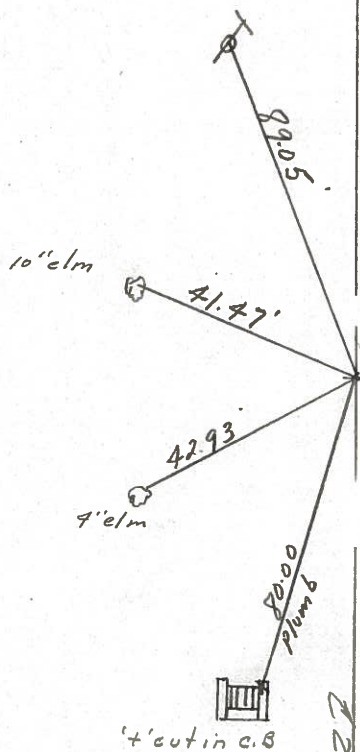
Ripple

Geyman

(6)



109+29.60 (S.H. 281 Sec T1 Br.)
(1932) set P.K. & washer atop
galvanized bolt atop E. pin



S.S.R. #412

PERSONNEL TITLE PERSONNEL TITLE

Cronin

Schneider

COUNTY Sandusky

Tied 2/4/75

DATE Drawn 1/30/75

Ash

Mosser

S. R. # 412

WEATHER overcast

Ripple

Barbour S.L.

SEC.

TEMP. 30°

Geyman S.L.

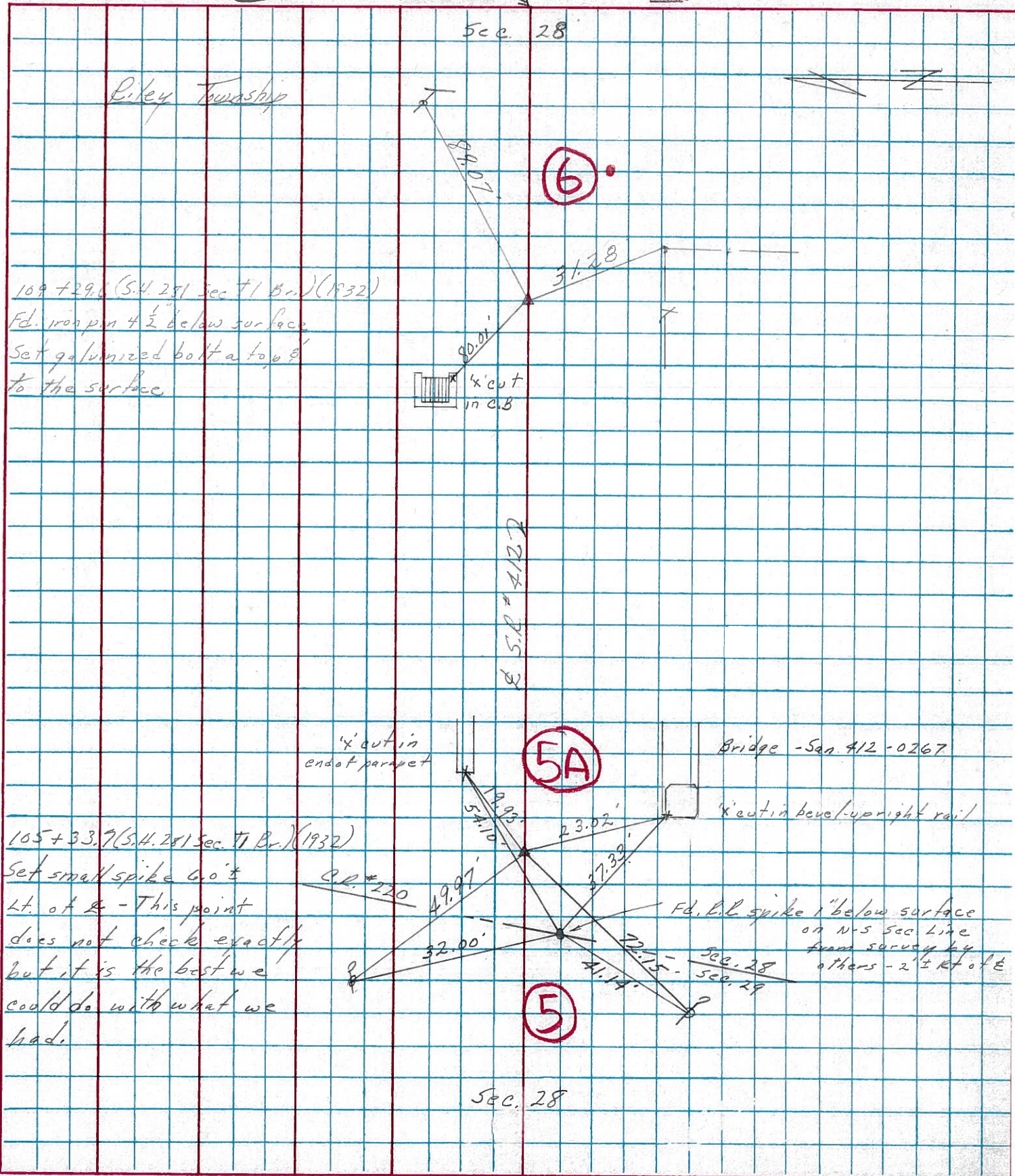
DESCRIPTION Ties for Control Points

JOB NO.

LEFT

CENTER LINE

RIGHT



Riley Township

Sec. 28

6

109+29.6 (S. 4. 281 Sec. 1 Br.) (1932)
 Fd. iron pin 4 1/2" below surface
 Set galvanized bolt a top &
 to the surface



S.R. # 412

'X' cut in end of parapet

5A

Bridge - Sta. 412 - 0267

105+33.7 (S. 4. 281 Sec. 1 Br.) (1932)
 Set small spike 6" to
 Lt. of R - This point
 does not check exactly
 but it is the best we
 could do with what we
 had.

C.R. # 220

'X' cut in level upright rail

Fd. L.L. spike 1" below surface
 on N-S sec line
 from survey by
 others - 2 1/2" Rt of E

5

Sec. 28

PERSONNEL	TITLE	PERSONNEL	TITLE	COUNTY	DATE	WEATHER	TEMP.
Schneider		Potts		Sandusky	Jan 1968		
Mosser				S. R. 412			
Barbour				SEC. N.E. of Fremont			
Redding							

DESCRIPTION Ties for Control Points JOB NO. _____

