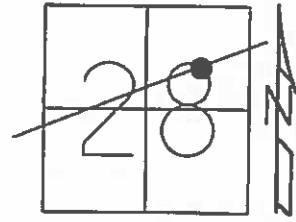


O.D.O.T. DISTRICT 2 SURVEY OFFICE (USE ONLY)

PERSONNEL _____ REFERENCE NO. 6 B SHEET 24 OF 33
 NOTES HOMAN DATE 10-09-2014 ROUTE SR 412
 H.C. WESTFALL WEATHER PARTLY SUNNY COUNTY SANDUSKY
 R.C. RHOADES TEMP. 55° TOWNSHIP RILEY
 _____ LEU _____ SECTION 28
 _____ T 5 N R 16 E

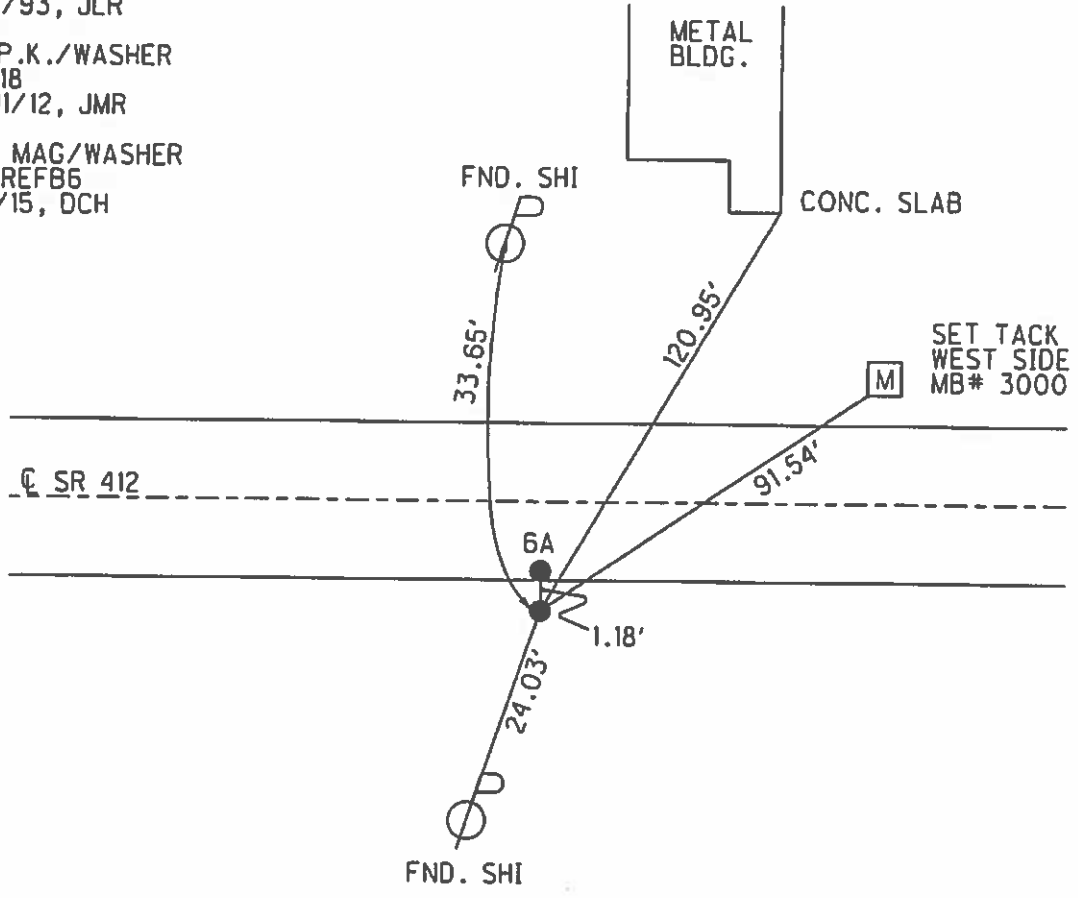
TYPE MONUMENT MAG & WASHER
 ON SURFACE - ~~BELOW~~ ON
~~LEFT~~ - ☐ PAV'T - RIGHT 11.2'
1.2' RT TO RT EDGE PAVEMENT
 S.L.M. 180+15



Grid: Northing: 619195.198 Easting: 1826574.013

RECORD: 02-04-1975
 P.O.T. ROUND 2 RR SPK.S ON N/E ☐
 SPIKE TO SOUTH ON ☐ 1.17' APART

- SET P.K./WASHER
8/2/93, JLR
- FD P.K./WASHER
REF 18
12/11/12, JMR
- SET MAG/WASHER
NEWREFB6
7/1/15, DCH



O.D.O.T. DISTRICT 2 SURVEY OFFICE

PERSONNEL

REFERENCE NO. C-A SHEET 16 OF 21

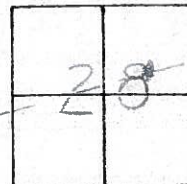
NOTES CHENEY
 H.C. RIPPLE
 R.C. BARBOUR
GEYMAN

DATE 4-28-93
 WEATHER PART SUNNY
 TEMP. 55°

ROUTE SR#412
 COUNTY SANDUSKY
 TOWNSHIP RILEY
 SECTION 28
T5 N R 16 E

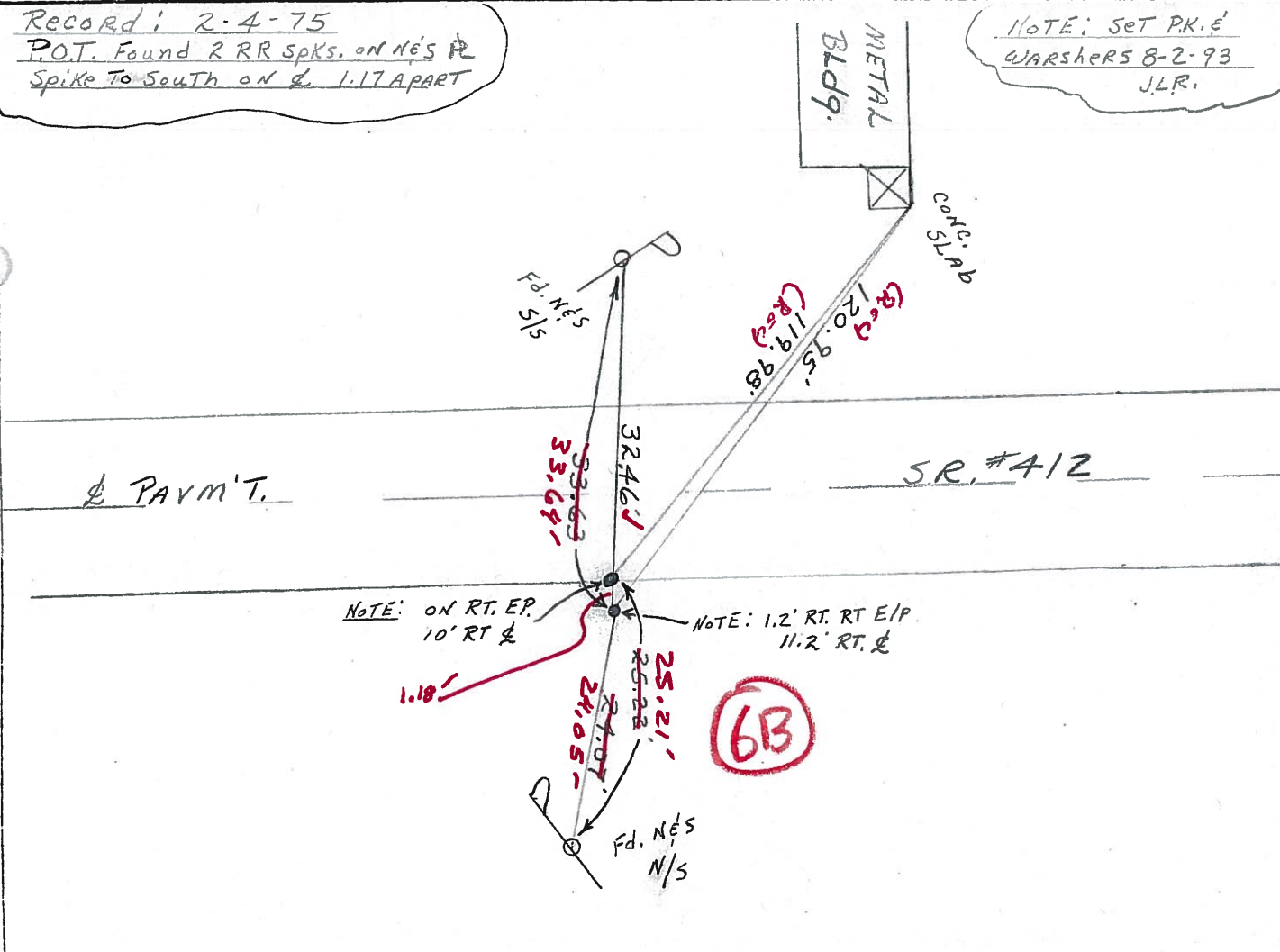
TYPE MONUMENT Not Found
 ON SURFACE - BELOW _____
 LEFT - & PAV'T. - RIGHT _____
 _____ TO _____ EDGE PAVEMENT
 S.L.M. 180+15

NOTE: Ties Cross Good!



Record: 2-4-75
 P.O.T. Found 2 RR Spks. on N&S R
 Spike to South on & 1.17 A PART

NOTE: Set P.K. &
 WARSHERS 8-2-93
 J.L.R.



Preventive Maintenance
 Microsurfaced 2000
 Existing Point Uncovered
 Date 7-24-2000

PERSONNEL TITLE PERSONNEL TITLE

Cronin

Schneider

COUNTY Sandusky

Ash

Masser

S. R. # 412

WEATHER overcast

Ripple

Barbour S.L.

SEC.

TEMP. 30°

Geyman S.L.

DESCRIPTION Ties for Control Points

JOB NO.

LEFT

CENTER LINE

RIGHT

