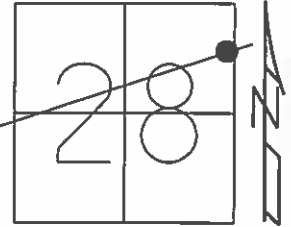


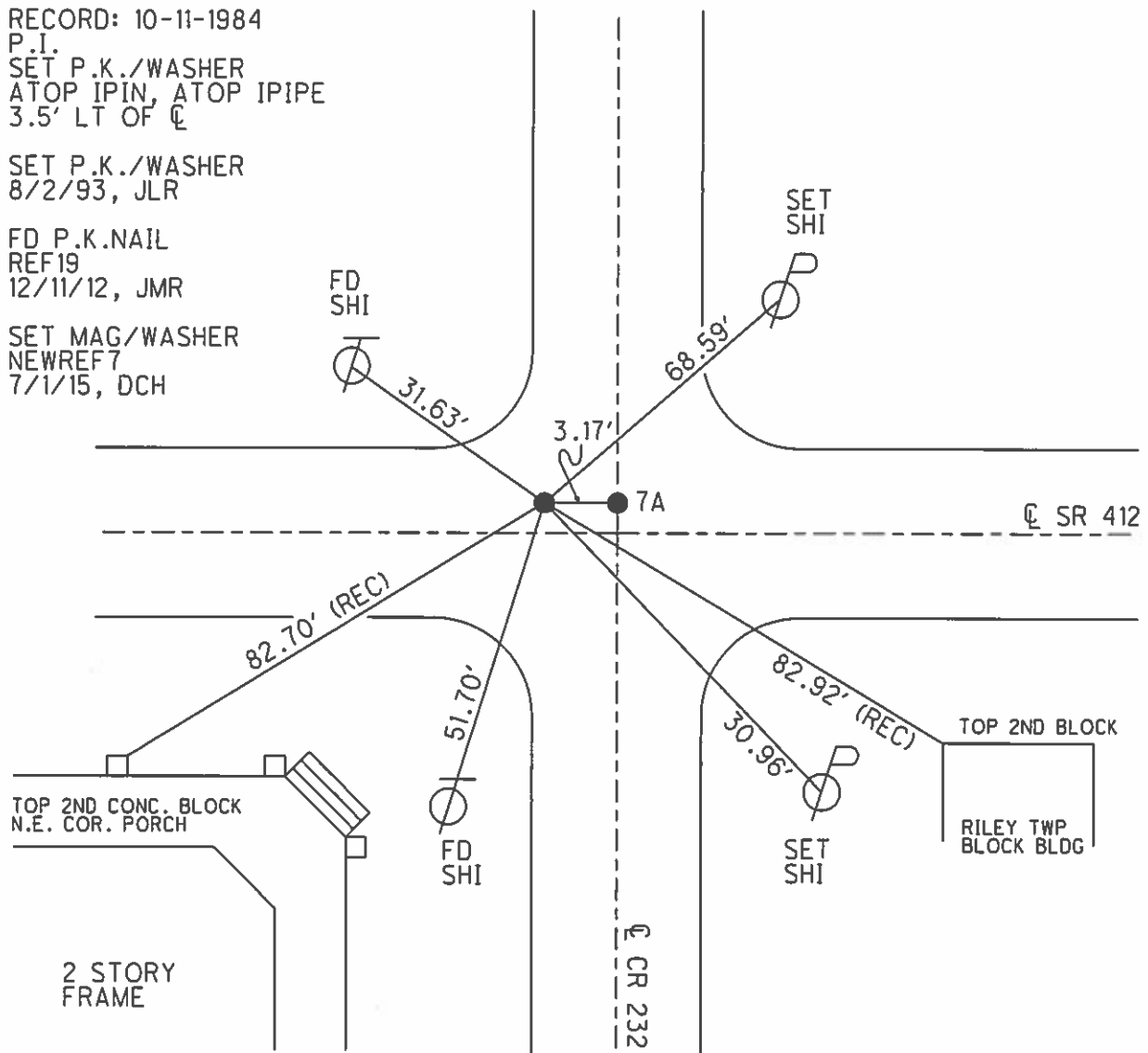
O.D.O.T. DISTRICT 2 SURVEY OFFICE (USE ONLY)

PERSONNEL \_\_\_\_\_ REFERENCE NO. 7 SHEET 25 OF 33  
 NOTES HOMAN DATE 10-09-2014 ROUTE SR 412  
 H.C. LEU WEATHER PARTLY SUNNY COUNTY SANDUSKY  
 R.C. RHOADES TEMP. 55° TOWNSHIP RILEY  
 \_\_\_\_\_ WESTFALL SECTION 28  
 T 5 N R 16 E

TYPE MONUMENT P.K./WASHER  
 ON SURFACE - ~~BELOW~~ ON \_\_\_\_\_  
 LEFT - ☉ PAV'T - RIGHT 3.5'  
6.5' TO LT EDGE PAVEMENT  
 S.L.M. 194+43.99  
 Grid: Northing: 619358.120 Easting: 1827902.789



RECORD: 10-11-1984  
 P.I.  
 SET P.K./WASHER  
 ATOP IPIN, ATOP IPIPE  
 3.5' LT OF ☉  
 SET P.K./WASHER  
 8/2/93, JLR  
 FD P.K.NAIL  
 REF19  
 12/11/12, JMR  
 SET MAG/WASHER  
 NEWREF7  
 7/1/15, DCH



# O.D.O.T. DISTRICT 2 SURVEY OFFICE

PERSONNEL

REFERENCE NO. #7

SHEET 17 OF 21

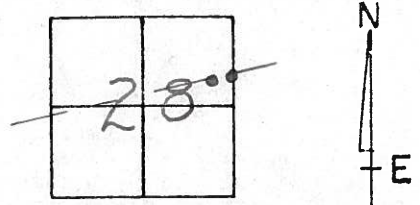
NOTES CHENEY  
 H.C. RIPPLE  
 R.C. BARBOUR  
GEYMAN

DATE 4-28-93  
 WEATHER PART SUNNY  
 TEMP. 55°

ROUTE SR#412  
 COUNTY SANDUSKY  
 TOWNSHIP RILEY  
 SECTION 28  
T5 N R 16 E

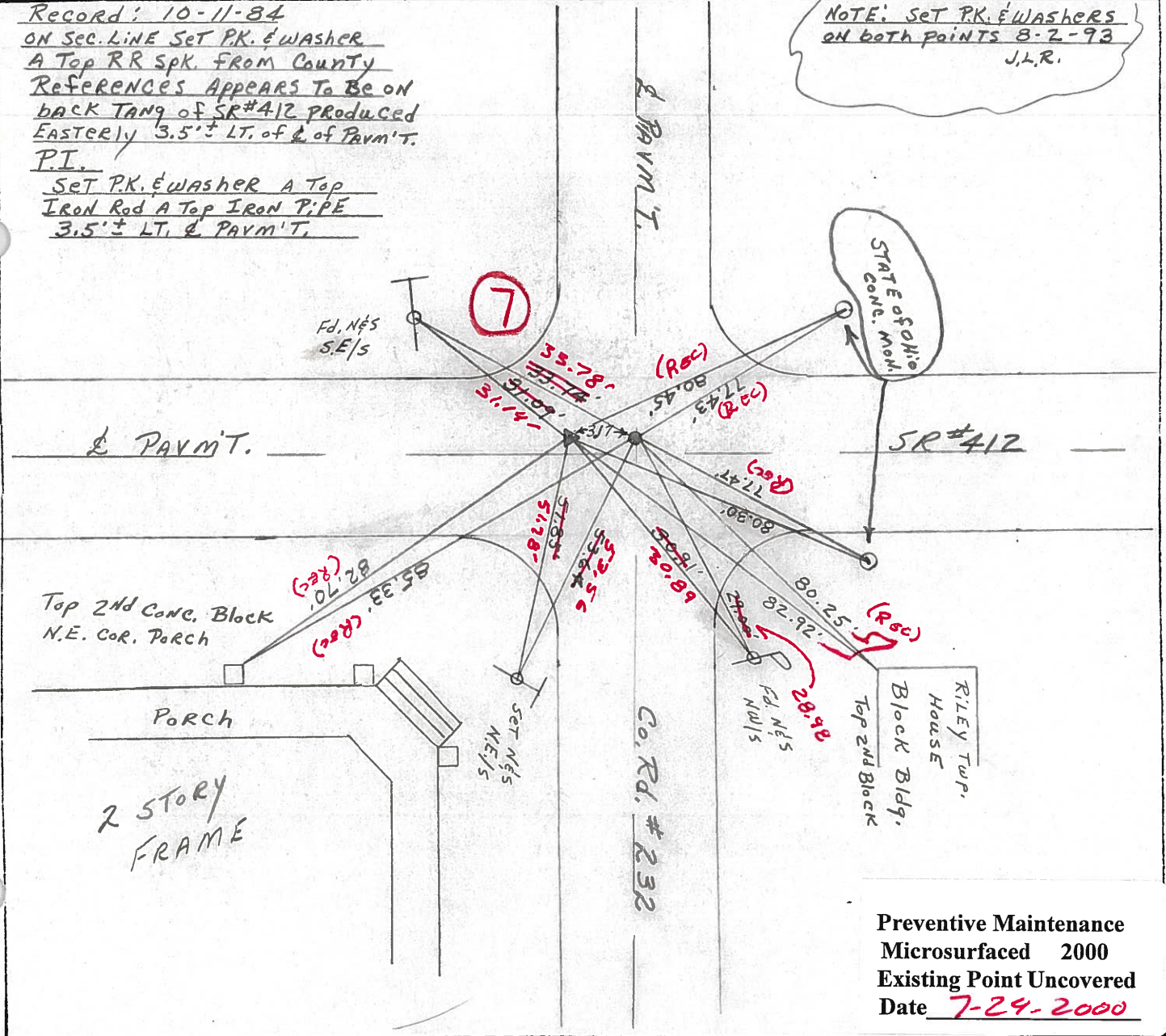
TYPE MONUMENT Fd. P.K.'s & Washers  
 ON SURFACE - ~~BELOW~~ ON  
 LEFT- & PAV'T. - ~~RIGHT~~ 3.5' ±  
6.5' TO LT. EDGE PAVEMENT

S.L.M. P.I. 193+51 ± Sec. Line Point 193+54 ±



Record: 10-11-84  
 ON SEC. LINE SET PK. & WASHER  
 A Top RR Spk. FROM County  
 REFERENCES APPEARS TO BE ON  
 BACK TANG OF SR#412 PRODUCED  
 EASTERLY 3.5' ± LT. OF & OF PAVM'T.  
P.I.  
 SET PK. & WASHER A Top  
 IRON Rod A Top IRON PIPE  
 3.5' ± LT. & PAVM'T.

NOTE: SET PK. & WASHERS  
 ON BOTH POINTS 8-2-93  
 J.L.R.



Preventive Maintenance  
 Microsurfaced 2000  
 Existing Point Uncovered  
 Date 7-24-2000

County Sandusky S.R. # 412

Township Riley

Section 28

T5N, R16E

Personnel Cronin

Ripple

Geyman

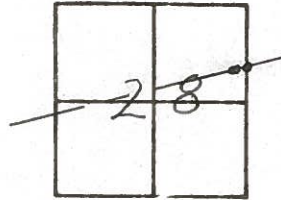
Barbour

# 7

Date 10/11/84

Weather sunny

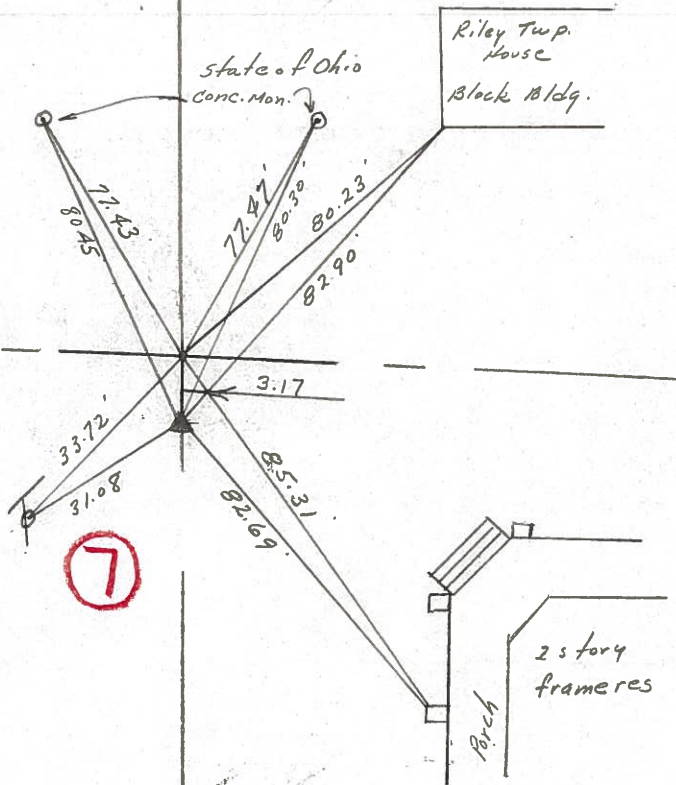
Temp. 65°



on Sec. Line set P.K. washer at top R.R. spike from County References Appears to be on back Tang. of S.R. #412 produced easterly 2.5' Lt. of Pavmt.

P.I. Set P.K. washer at top iron rod at top iron pipe 2.5' Lt. of Pavement

CR #232



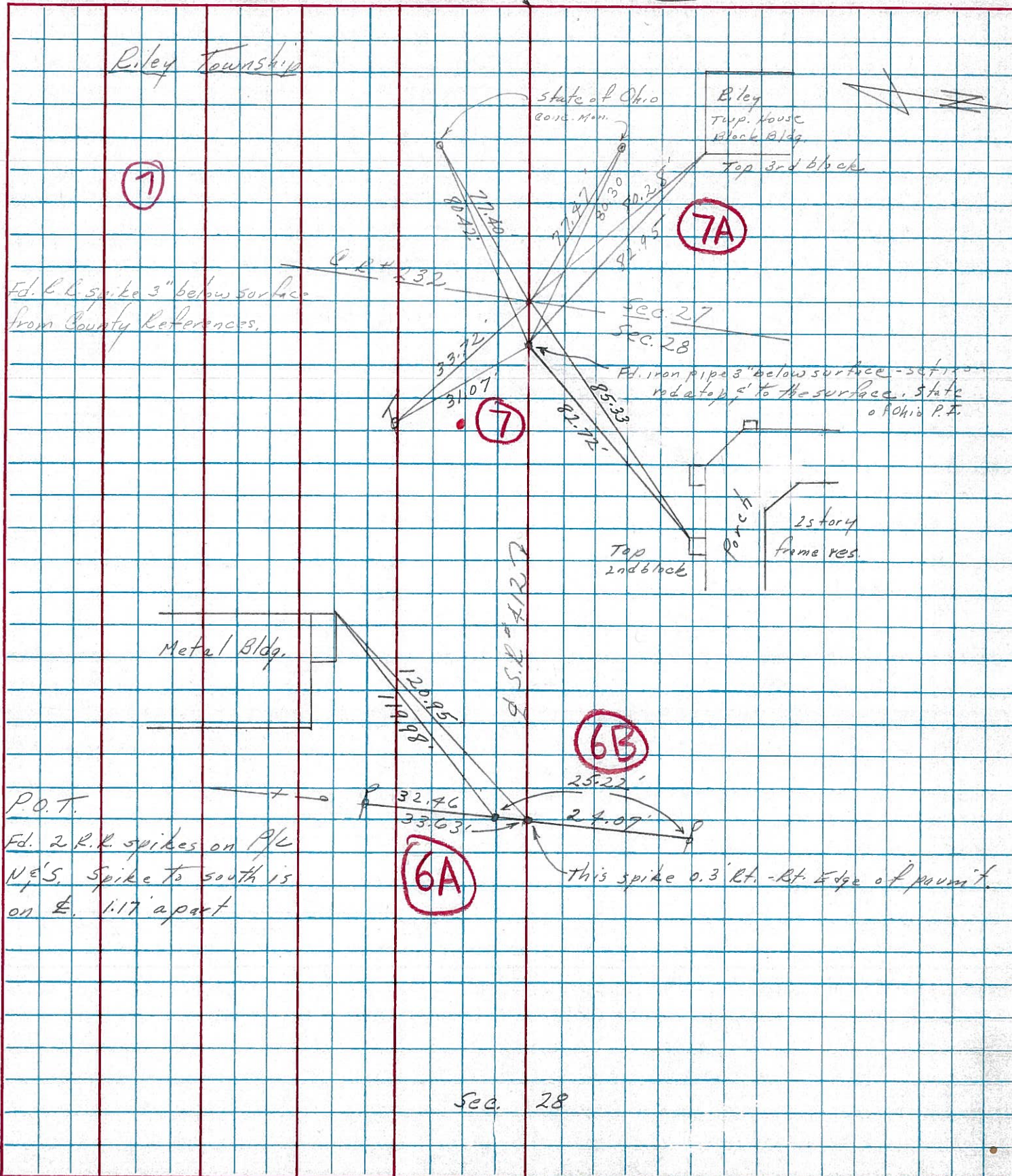
S.R. # 412



PERSONNEL	TITLE	PERSONNEL	TITLE
Cronin		Schneider	
Ash		Mosser	
Ripple		Barbour S.L.	
Geyman S.L.			

COUNTY Sandusky  
 DATE Tied 2/4/75 Drawn 1/30/75  
 S. R. # 412  
 WEATHER Overcast  
 SEC. \_\_\_\_\_ TEMP. 30°

DESCRIPTION Ties for Control Points  
 LEFT CENTER LINE RIGHT JOB NO.



Sec. 28



PERSONNEL	TITLE	PERSONNEL	TITLE
Schnöder		Potts	
Mosser			
Barbour			
Redding			

COUNTY Sandusky DATE Jan. 1968  
 S. R. 412 WEATHER \_\_\_\_\_  
 SEC. N. E. of Fremont TEMP. \_\_\_\_\_

DESCRIPTION Ties for Control ints JOB NO. \_\_\_\_\_

