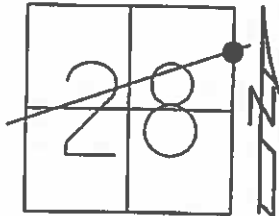


O.D.O.T. DISTRICT 2 SURVEY OFFICE (USE ONLY)

PERSONNEL _____ REFERENCE NO. 7A SHEET 26 OF 33
 NOTES HOMAN DATE 10-09-2014 ROUTE SR 412
 H.C. LEU WEATHER PARTLY SUNNY COUNTY SANDUSKY
 R.C. RHOADES TEMP. 55° TOWNSHIP RILEY
WESTFALL SECTION 28
 T 5 N R 16 E

TYPE MONUMENT P.K./WASHER
 ON SURFACE - ~~BELOW~~ ON _____
 LEFT - ☉ PAV'T - RIGHT ON _____
6.5' TO LT. EDGE PAVEMENT
 S.L.M. 194+47.17



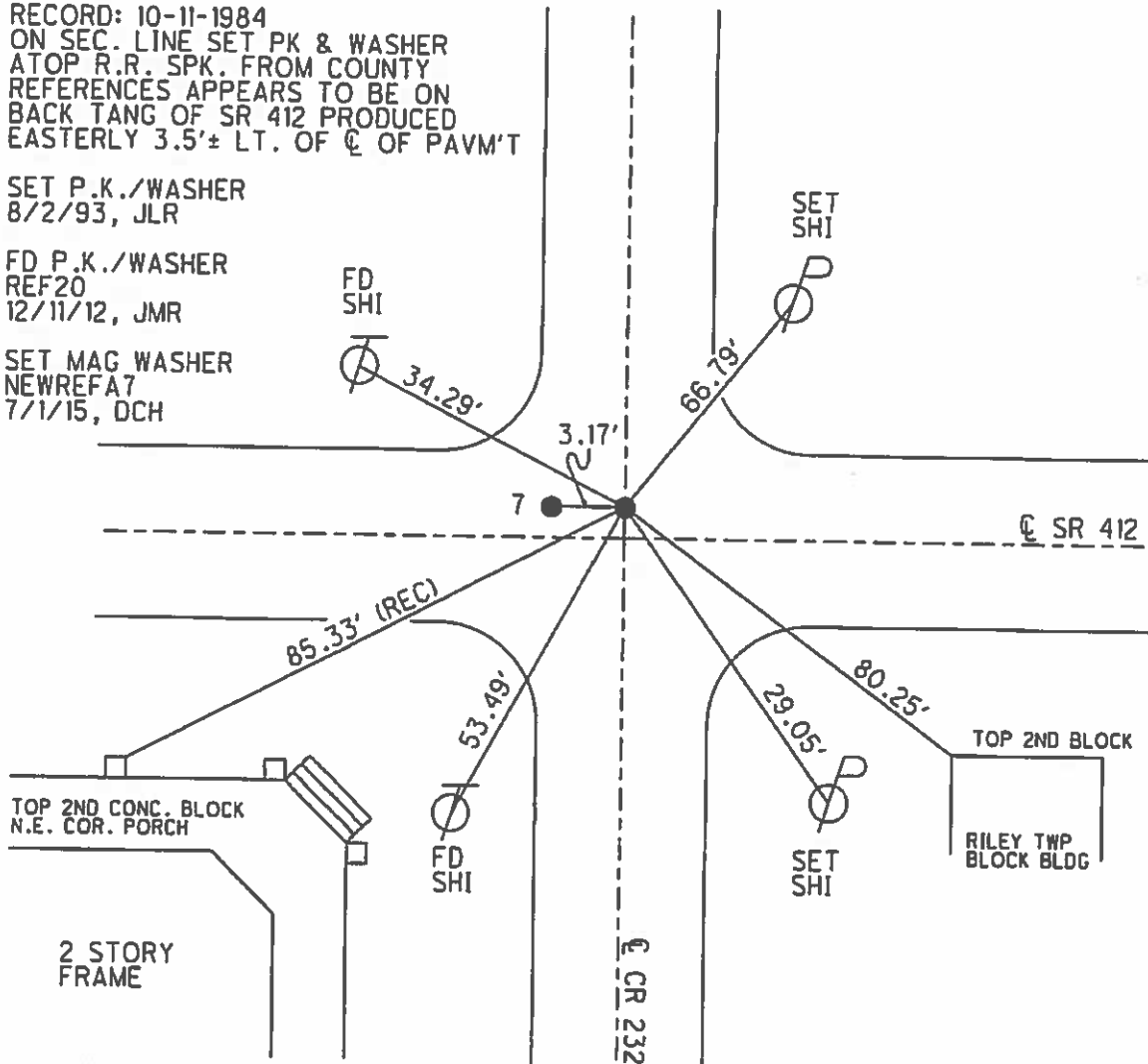
Grid: Northing: 619358.814 Easting: 1827905.896

RECORD: 10-11-1984
 ON SEC. LINE SET PK & WASHER
 ATOP R.R. SPK. FROM COUNTY
 REFERENCES APPEARS TO BE ON
 BACK TANG OF SR 412 PRODUCED
 EASTERLY 3.5'± LT. OF ☉ OF PAVM'T

SET P.K./WASHER
 8/2/93, JLR

FD P.K./WASHER
 REF20
 12/11/12, JMR

SET MAG WASHER
 NEWREF A7
 7/1/15, DCH



O.D.O.T. DISTRICT 2 SURVEY OFFICE

PERSONNEL

REFERENCE NO. #7

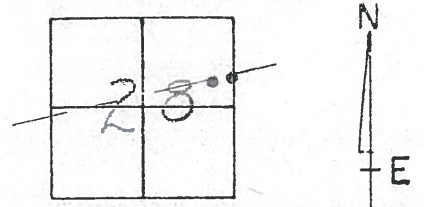
SHEET 17 OF 21

NOTES CHENEY
 H.C. RIPPLE
 R.C. BARBOUR
GEYMAN

DATE 4-28-93
 WEATHER PART SUNNY
 TEMP. 55°

ROUTE SR#412
 COUNTY SANDUSKY
 TOWNSHIP RILEY
 SECTION 28
T5 N R 16 E

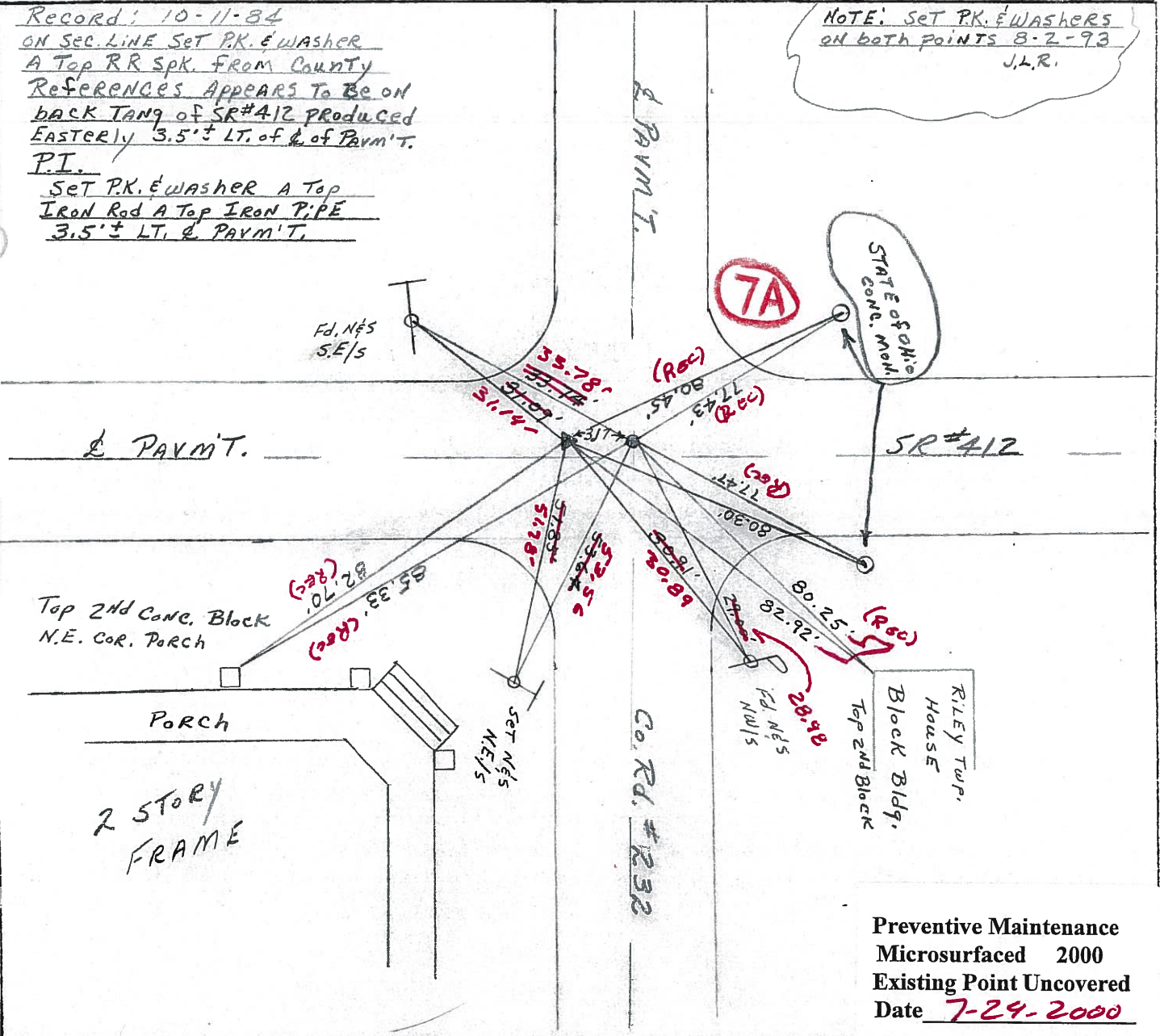
TYPE MONUMENT Fd. P.K.'s Ewashers
 ON SURFACE - ~~BELOW~~ ON
 LEFT- & PAV'T. - ~~RIGHT~~ 3.5'±
6.5' TO LT. EDGE PAVEMENT
S.L.M. P.I. 193+51± Sec Line Point 193+54±



Record: 10-11-84
 ON SEC. LINE SET P.K. E WASHER
 A Top RR Spk. FROM COUNTY
 REFERENCES APPEARS TO BE ON
 BACK TANG OF SR#412 PRODUCED
 EASTERLY 3.5'± LT. OF & OF PAVM'T.
P.I.

Set P.K. E WASHER A Top
 IRON ROD A Top IRON PIPE
 3.5'± LT. & PAVM'T.

NOTE: SET P.K. E WASHERS
 ON BOTH POINTS 8-2-93
 J.L.R.



Preventive Maintenance
 Microsurfaced 2000
 Existing Point Uncovered
 Date 7-29-2000

County Sandusky S.R. # 412

Township Riley

Section 28

T 5 N, R 16 E

Personnel Cronin

Ripple

Geyman

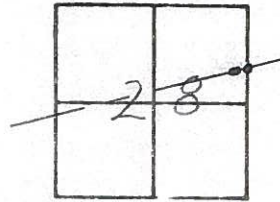
Barbour

7

Date 10/11/84

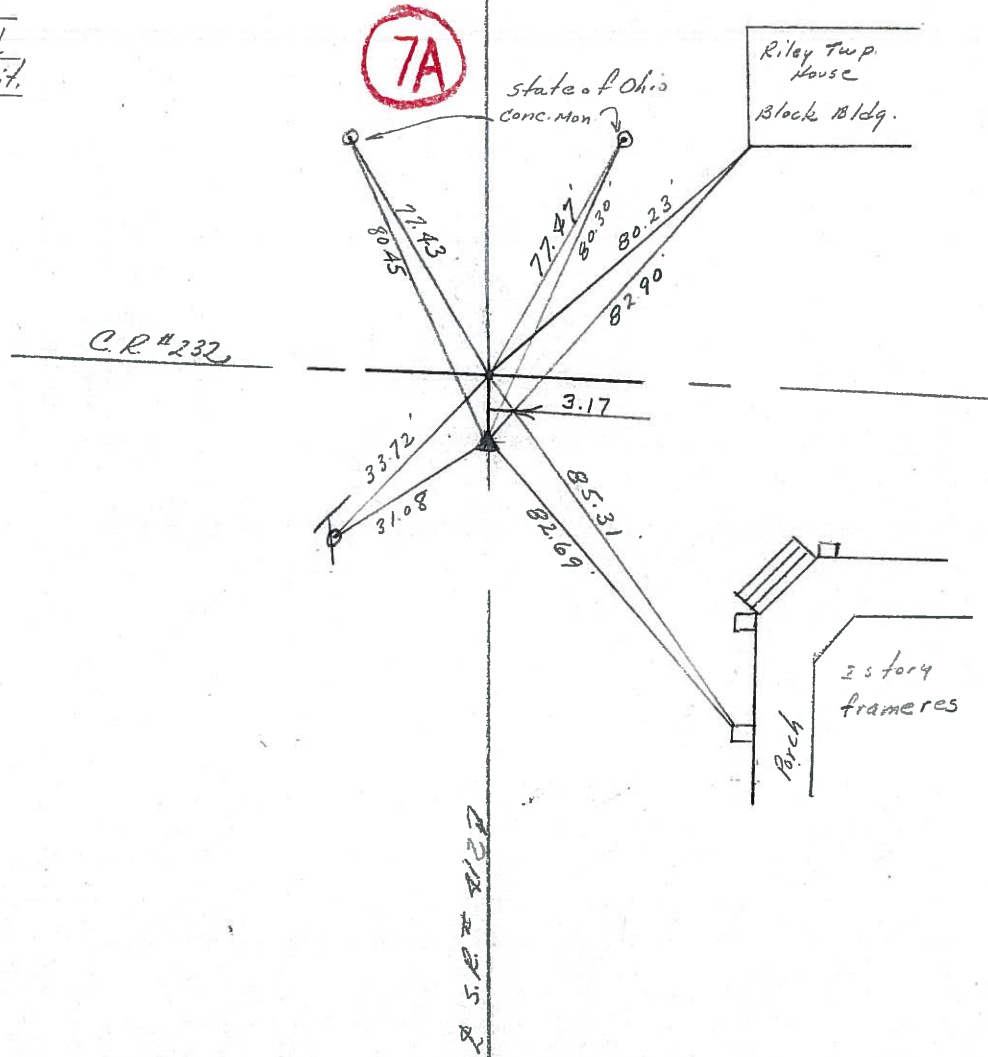
Weather sunny

Temp. 65°



on sec. line set PK's
washer atop R.R. spike
from County References
Appears to be on back
Tang of S.R. #412 produced
easterly 2.5' Lt. of Pavmt.

P.I.
Set P.K. washer atop
iron rod atop iron
pipe 2.5' Lt. of Pavement



| PERSONNEL | TITLE | PERSONNEL | TITLE |
|-------------|-------|--------------|-------|
| Cronin | | Schneider | |
| Ash | | Mosser | |
| Lippie | | Barbour S.L. | |
| Geyman S.L. | | | |

COUNTY Sandusky
S. R. # 412
WEATHER overcast
TEMP. 30°

DESCRIPTION Ties for Control Points JOB NO.

