

O.D.O.T. DISTRICT 2 SURVEY OFFICE (USE ONLY)

PERSONNEL

REFERENCE NO. 9A

SHEET 31 OF 33

NOTES HOMAN

DATE 10-09-2014

ROUTE SR 412

H.C. WESTFALL

WEATHER CLOUDY

COUNTY SANDUSKY

R.C. LEU

TEMP. 55°

TOWNSHIP RILEY

RHOADES

SECTION 27

DWG BY NIESE PID 95765

T 5 N R 16 E

TYPE MONUMENT MAG/WASHER

~~ON SURFACE~~ - BELOW ON

OFFSET ☉ PAVEMENT ON LT : RT

10' TO RT EDGE PAVEMENT

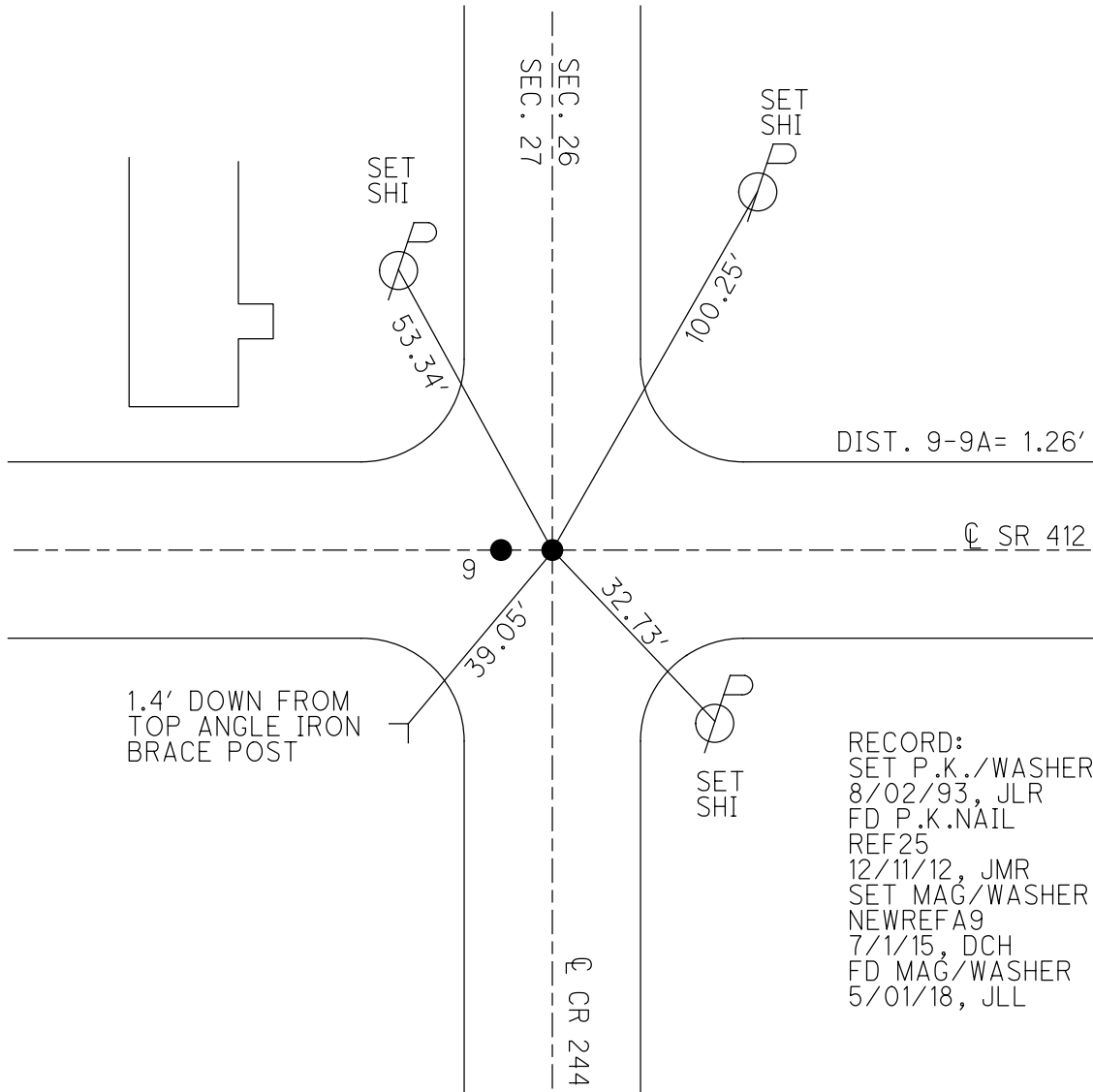
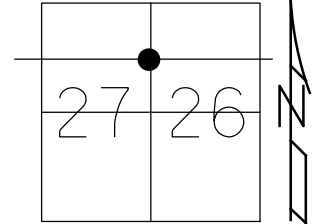
STATION: 246+87

HORZ.DATUM: NAD83(2011)

GEOID: 2012A

GRID: NORTHING: 619984.720

EASTING: 1833210.767

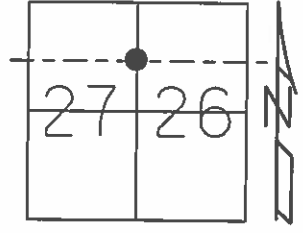


RECORD:
 SET P.K./WASHER
 8/02/93, JLR
 FD P.K.NAIL
 REF25
 12/11/12, JMR
 SET MAG/WASHER
 NEWREF A9
 7/1/15, DCH
 FD MAG/WASHER
 5/01/18, JLL

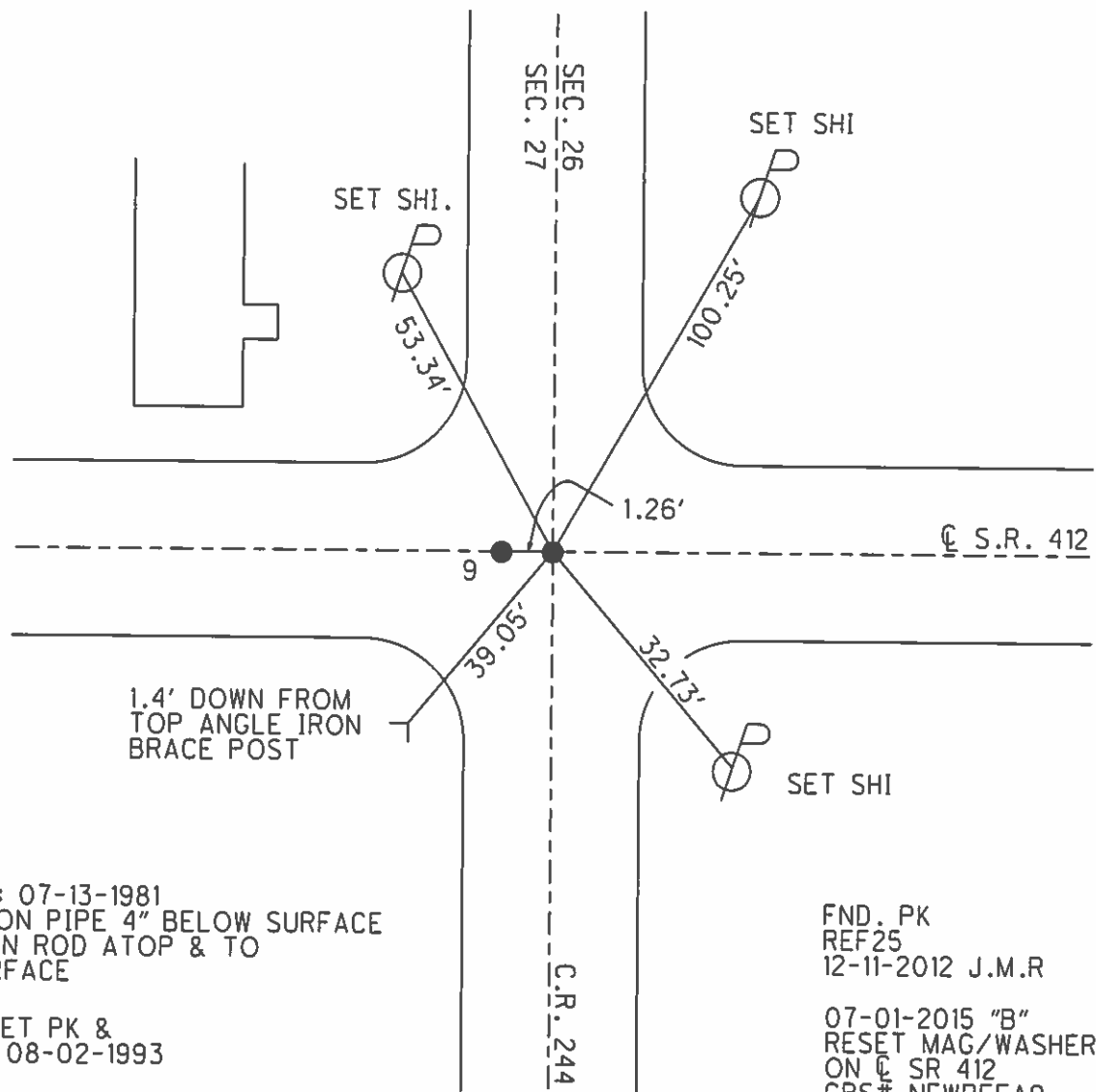
O.D.O.T. DISTRICT 2 SURVEY OFFICE (USE ONLY)

PERSONNEL	REFERENCE NO.	9 A	SHEET	28	OF	30
NOTES	HOMAN	DATE	10-09-2014	ROUTE	SR 412	
H.C.	WESTFALL	WEATHER	CLOUDY	COUNTY	SANDUSKY	
R.C.	LEU	TEMP.	55°	TOWNSHIP	RILEY	
	RHOADES			SECTION	27	
				T	5	R
					N	E

TYPE MONUMENT MAG & WASHER
 ON SURFACE - ~~BELOW~~ ON
 LEFT - ☉ PAV'T - RIGHT ON
10' TO RT. EDGE PAVEMENT
 S.L.M. 246+87



Grid: Northing: 619984.720 Easting: 1833210.767



RECORD: 07-13-1981
 FND. IRON PIPE 4" BELOW SURFACE
 SET IRON ROD ATOP & TO
 THE SURFACE

NOTE: SET PK &
 WASHER 08-02-1993
 J.L.R.

FND. PK
 REF25
 12-11-2012 J.M.R

07-01-2015 "B"
 RESET MAG/WASHER
 ON ☉ SR 412
 GPS# NEWREFA9
 DCH, JLL

O.D.O.T. DISTRICT 2 SURVEY OFFICE

PERSONNEL

REFERENCE NO. #9

SHEET 21 OF 21

NOTES CHENEY

H.C. RIPPLE

R.C. BARBOUR

GEYMAN

DATE 4-28-1993

WEATHER SUNNY

TEMP. 65°

ROUTE SR#412

COUNTY SANDUSKY

TOWNSHIP Riley

SECTION 27

T 5 N R 16 E

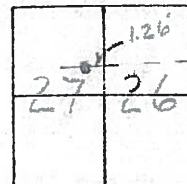
TYPE MONUMENT "A" Fd. PK. Washer "B" Fd. Hole-Nail Gone

ON SURFACE - BELOW ON

LEFT - C PAV'T. - RIGHT ON

10' TO RT. EDGE PAVEMENT

S.L.M. ^{P.I.} 246+86+ ^{SEC.} Line 246+87+

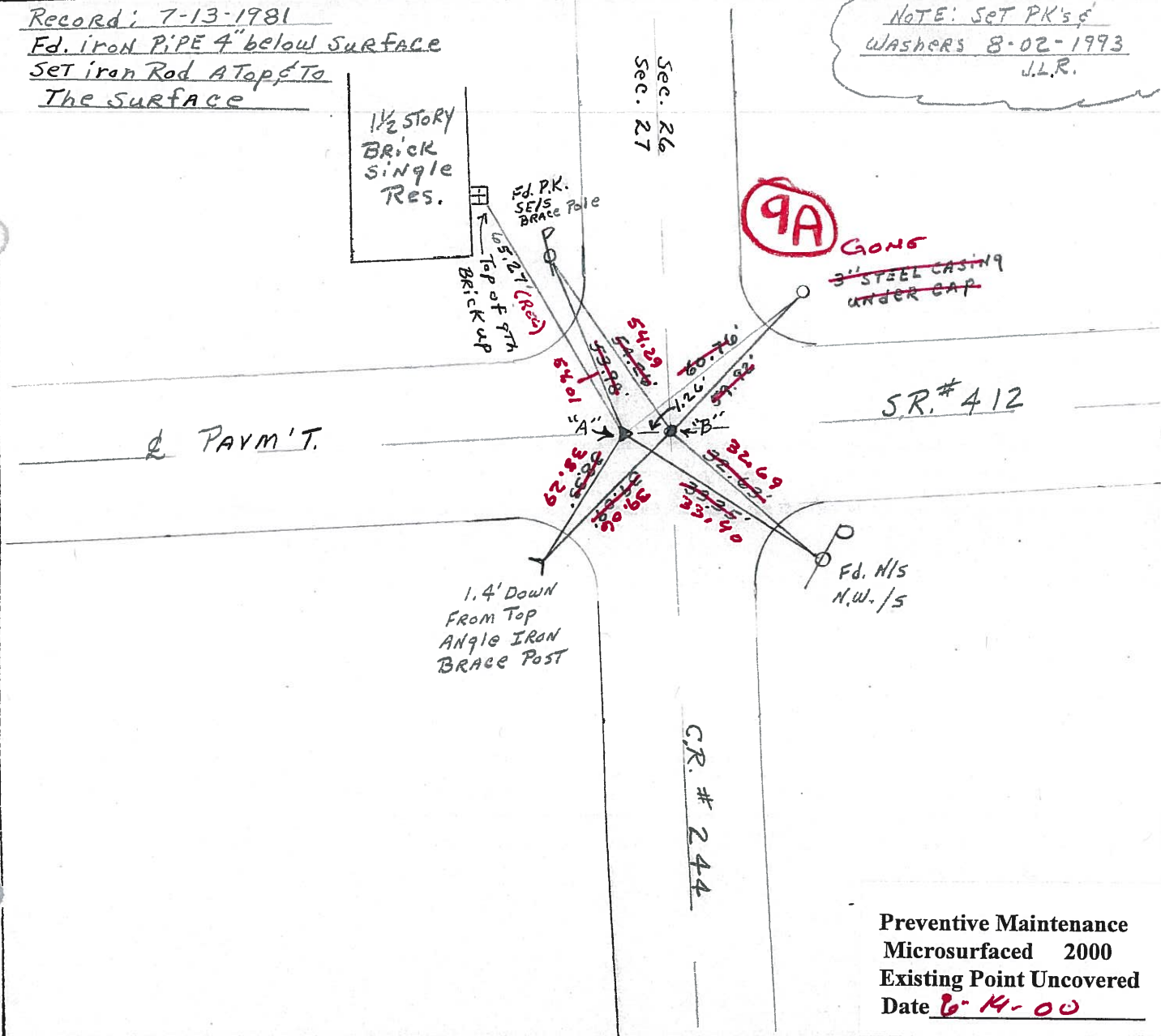


Record: 7-13-1981

Fd. iron PIPE 4" below surface

SET iron Rod A Top of
The surface

NOTE: SET PK's &
WASHERS 8-02-1993
J.L.R.



Preventive Maintenance
Microsurfaced 2000
Existing Point Uncovered
Date 6-14-00

County SANDUSKY S.R. #412

Date 7/13/81

Township RILEY

Weather OVERCAST - HUMID

Section 27

Temp. 80°

T5N, R16E

Personnel CROWIN

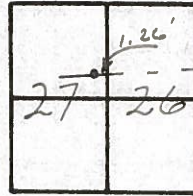
RIPPLE

GEYMAN

MOSSER

BARBOUR

#1



I. Pipe 4" below surface
 I. Rod atop & to the
 surface

