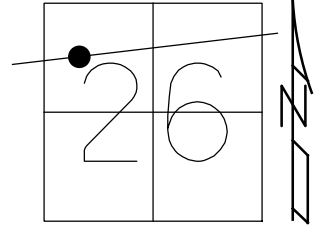


O.D.O.T. DISTRICT 2 SURVEY OFFICE (USE ONLY)

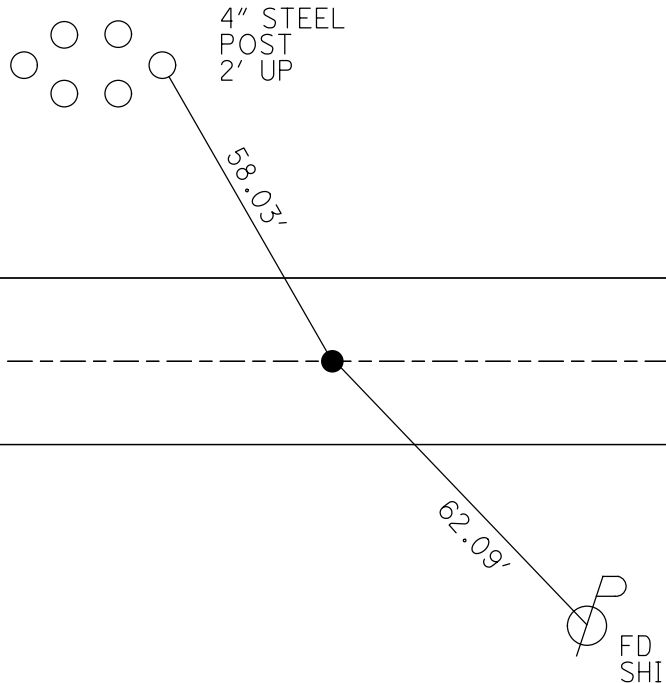
PERSONNEL _____ REFERENCE NO. 10 SHEET 1 OF 32
 NOTES AUBLE DATE 5/1/18 ROUTE SR 412
 H.C. LEU WEATHER SUNNY, BREEZY COUNTY SANDUSKY
 R.C. AUBLE TEMP. 66° TOWNSHIP RILEY
 _____ SECTION 26
 DWG BY NIESE PID 95765 T 5 N R 16 E

TYPE MONUMENT P.K./WASHER
 ON SURFACE - ~~BELOW~~ ON
 OFFSET 0.7' LT : ~~RT~~
8.2' TO LT EDGE PAVEMENT
 STATION: 295+13.69



HORZ.DATUM: NAD83(2011) GEOID: 2012A
 GRID: NORTHING: 620128.832 EASTING: 1834428.962

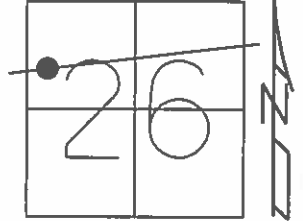
RECORD: P.I.
 P.K./WASHER
 ATOP BOAT SPIKE/WASHER
 FD P.K./WASHER
 7/5/01, TMR
 SET P.K./WASHER
 8/31/01, SAH
 FD P.K./WASHER
 REF10
 12/11/12, JMR
 FD P.K./WASHER
 REF10
 11/29/16, DCH
 SET MAG/WASHER
 8-21-19, JFO



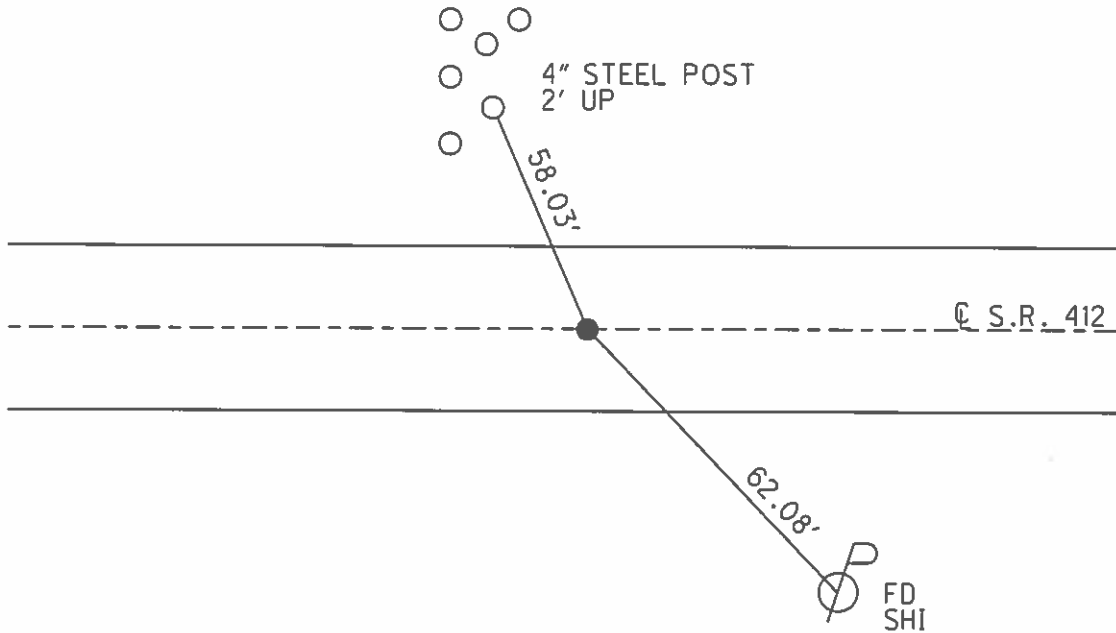
O.D.O.T. DISTRICT 2 SURVEY OFFICE (USE ONLY)

PERSONNEL	REFERENCE NO.	<u>10</u>	SHEET	<u>1</u>	OF	<u>34</u>
NOTES	LEU	DATE	<u>06-23-2015</u>	ROUTE	<u>SR 412</u>	
H.C.	LEU	WEATHER	<u>CLOUDY</u>	COUNTY	<u>SANDUSKY</u>	
R.C.	HOMAN	TEMP.	<u>80°F</u>	TOWNSHIP	<u>RILEY</u>	
				SECTION	<u>26</u>	
				T	<u>5</u>	N
				R	<u>16</u>	E

TYPE MONUMENT PK & WASHER
 ON SURFACE - ~~BELOW~~ ON
 LEFT - ☉ PAV'T - ~~RIGHT~~ 0.7'
8.2 TO LT EDGE PAVEMENT
 S.L.M. 259+20
 Grid: Northing: 620128.832 Easting: 1834428.962



P.I. REC:
 PK & WASHER ATOP BOAT
 SPIKE & WASHER
 0.2'± MI. EAST OF CR# 224
 SET PK & WASHER
 08-31-2001 S.A.H.



O.D.O.T. DISTRICT 2 SURVEY OFFICE

PERSONNEL

REFERENCE NO. 10

SHEET 1 OF 11

NOTES TED ROUSOS

H.C. VAN DUSEN

R.C. ADAM B.

DATE 7-5-01

WEATHER SUNNY

TEMP. +75° F

ROUTE # 412

COUNTY SANDUSKY

TOWNSHIP RILEY

SECTION # 26

T 5 N R 16 E

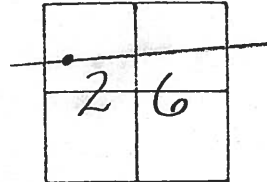
TYPE MONUMENT PK & WASHER

ON SURFACE - BELOW YES

LEFT - C PAV'T. - RIGHT 0.7'

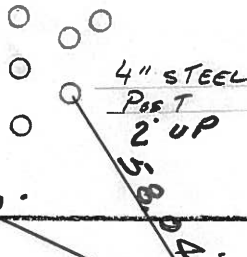
8.2 TO LT. EDGE PAVEMENT

S.L.M. 259+20



P.I. REC.
PK & WASHER ATOP BOAT
SPIKE & WASHER
0.2 MI. EAST OF CR
224

CONC. P/W MARKER
LEANING



Q Pmnt.

SR 412

SET PK/WASHER
8-31-01
S.A.H.

62.06'

SET
NAIL & SHI.
NW/5



Resurfaced 2001

O.D.O.T. DISTRICT 2 SURVEY OFFICE

2

PERSONNEL

NOTES CRONIN (DRAW)
H.C. RIPPLE
R.C. BARBOUR
GEYMAN

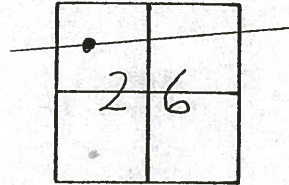
REFERENCE NO. _____
DRAWN 3/08/89
DATE 11/01/89
WEATHER SUNNY
TEMP. 50°

SHEET _____ OF _____

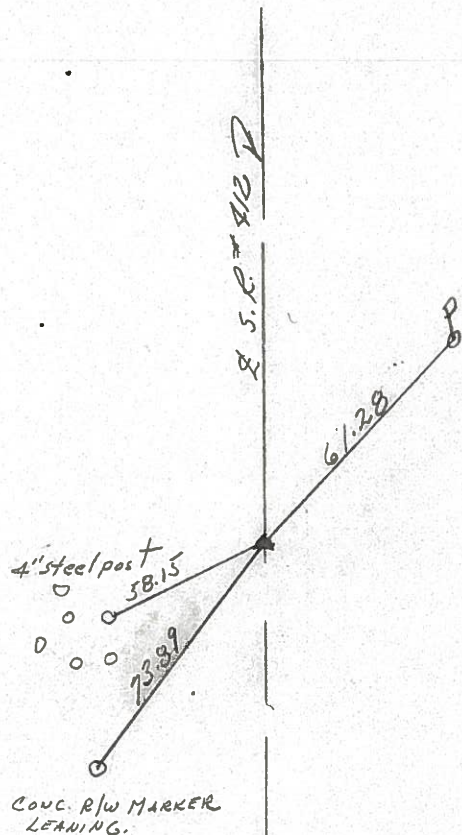
ROUTE # 412
COUNTY SANDUSKY
TOWNSHIP RILEY
SECTION # 26
T 5 N R 16 E

TYPE MONUMENT P.K. & WASHER
ON SURFACE - BELOW _____
LEFT - PAV'T. - RIGHT _____
TO _____ EDGE PAVEMENT
S.L.M. _____

10



P.I.
P.K. & WASHER ATOP BOAT
SPIKE & WASHER
0.2 ± MI. EAST OF C.R.
294



County SANDUSKY S.R. # 412

Date 7/13/81

Township BILEY

Weather OVERCAST - HUMID

Section # 26

Temp. 80°

T5N, R16E

Personnel CRONIN

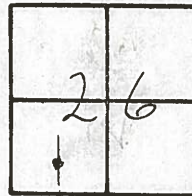
RIPPLE

GEYMAN

MOSSER

BARBOUR

10



P.I.

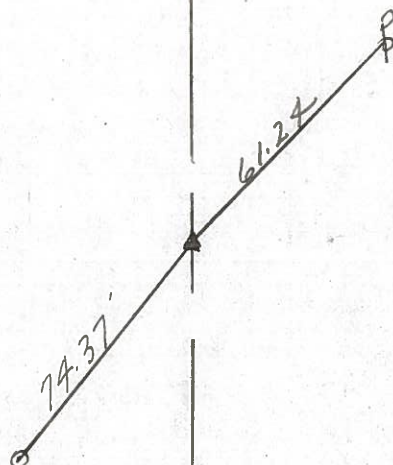
Bolt spike & washer 1"
below surface. Previously
set from State of Ohio

R/W Markers

Raised 7/13/81

0.2 ± M; East of C.R. # 244

Conc. R/W Marker



R/W S.R. # 412

THESE HAVE BEEN REPLACED WITH NEW SHEETS

SHEET NO. 9

PERSONNEL

TITLE

PERSONNEL

TITLE

COUNTY Sandusky

DATE Drawn 1/30/75

Cranin

Schneider

Ash

Mosser

S. R. # 412

WEATHER overcast

Ripple

Barbour-S.L.

SEC.

TEMP. 30°

Geyman-S.L.

DESCRIPTION

Ties for Control Points

JOB NO.

LEFT

CENTER LINE

RIGHT

