

O.D.O.T. DISTRICT 2 SURVEY OFFICE (USE ONLY)

PERSONNEL

REFERENCE NO. 11

SHEET 2 OF 32

NOTES AUBLE

DATE 5/1/18

ROUTE SR 412

H.C. LEU

WEATHER SUNNY, BREEZY

COUNTY SANDUSKY

R.C. AUBLE

TEMP. 67°

TOWNSHIP RILEY

DWG BY NIESE PID 95765

SECTION 25

T 5 N R 16 E

TYPE MONUMENT MAG/WASHER

ON SURFACE - ~~BELOW~~ ON

OFFSET 2.5' LT : RT

10.0' TO LT EDGE PAVEMENT

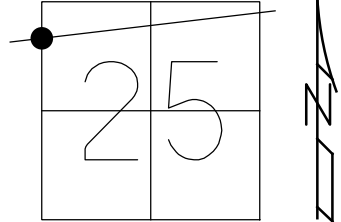
STATION: 299+87.40

HORIZ.DATUM: NAD83(2011)

GEOID: 2012A

GRID: NORTHING: 620593.326

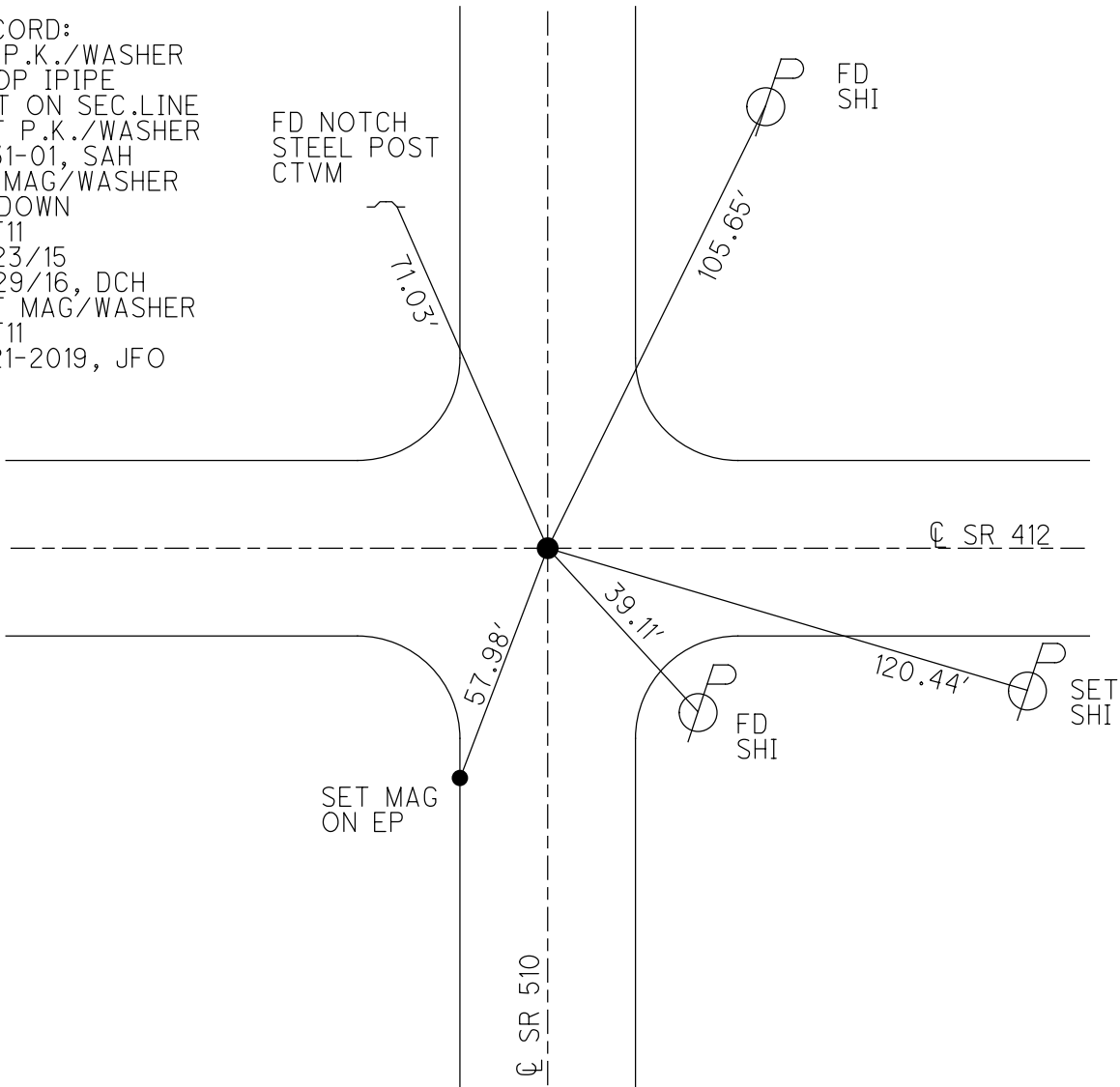
EASTING: 1838476.101



RECORD:
 FD P.K./WASHER
 ATOP IPIPE
 NOT ON SEC.LINE
 SET P.K./WASHER
 8-31-01, SAH
 FD MAG/WASHER
 2" DOWN
 REF11
 6/23/15
 11/29/16, DCH
 SET MAG/WASHER
 REF11
 8-21-2019, JFO

FD NOTCH
 STEEL POST
 CTVM

FD
 SHI



O.D.O.T. DISTRICT 2 SURVEY OFFICE (USE ONLY)

PERSONNEL _____ REFERENCE NO. 11 SHEET 2 OF 34
 NOTES LEU DATE 06-23-2015 ROUTE SR 412
 H.C. LEU WEATHER CLOUDY COUNTY SANDUSKY
 R.C. HOMAN TEMP. 80°F TOWNSHIP RILEY
 SECTION 25 & 26
 T 5 N R 16 E

TYPE MONUMENT MAG & WASHER

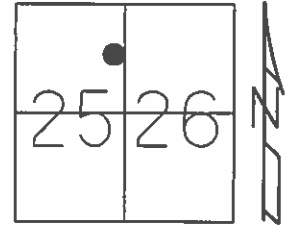
~~ON SURFACE~~ - BELOW 2"

~~LEFT~~ - ☉ PAV'T - RIGHT 2.5' RT OF ☉ SR 412

10.0' TO LT. EDGE PAVEMENT

S.L.M. 300+16

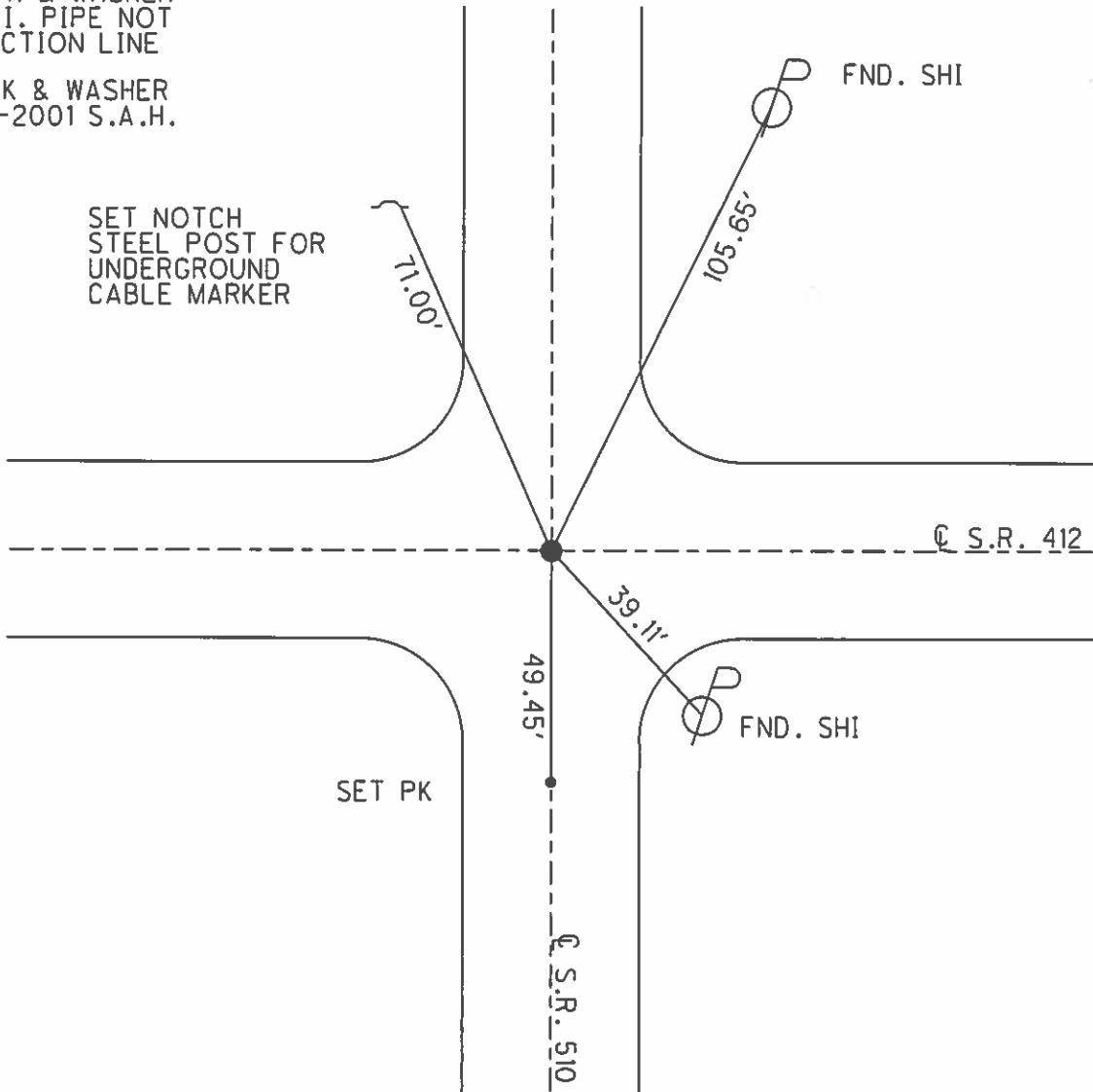
Grid: Northing: 620593.325 Easting: 1838476.101



REC: PK & WASHER
 ATOP I. PIPE NOT
 ON SECTION LINE

SET PK & WASHER
 08-31-2001 S.A.H.

SET NOTCH
 STEEL POST FOR
 UNDERGROUND
 CABLE MARKER



O.D.O.T. DISTRICT 2 SURVEY OFFICE

PERSONNEL _____

REFERENCE NO. 12

SHEET 13 OF 17

NOTES HOMAN _____

DATE 6-30-04

ROUTE SR 510

H.C. HUSS _____

WEATHER SUNNY

COUNTY SANDUSKY

R.C. NUHFER _____

TEMP. +80°

TOWNSHIP RILEY

SECTION 25 & 26

T 5 N R 16 E

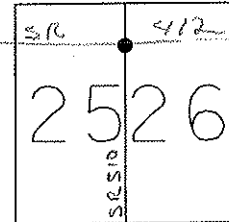
TYPE MONUMENT P.K. & WASHER

ON SURFACE ~~BELOW~~ _____ ON _____

LEFT - Q PAVT - ~~RIGHT~~ 4'

_____ TO _____ EDGE PAVEMENT

S.L.M. _____ 227+81



REC:
P.K./WASHER ATOP I. PIPE
NOT ON SECTION LINE
SET P.K./WASHER
8-31-01
SAH

Note

SR 412 = Ref # 11
Sta = 300+16

CUT "x"
EAST CORNER
TRAFFIC SIGNAL BOX

37.56'

CUT NOTCH
WEST SIDE
STOP SIGN POST

SR 510

49.00'

Q PAVE

SR 412

47.72'

CUT NOTCH
EAST LEG
STOP SIGN POST

40.96'

FD
N&S

Q PAVE

O.D.O.T. DISTRICT 2 SURVEY OFFICE

PERSONNEL

NOTESTED Rousos
 H.C. VAN DUSEN
 R.C. ADAM B.

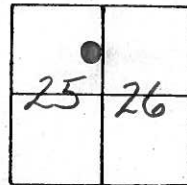
REFERENCE NO. 11
120WSR530

SHEET 2 OF 11

DATE 7-5-01
 WEATHER SUNNY
 TEMP. +75°F

ROUTE 412
 COUNTY SANDUSKY
 TOWNSHIP RILEY
 SECTION 25 or 26?
 T5 N R 16 E

TYPE MONUMENT PK & WASHER
~~ON SURFACE~~ - BELOW 2"
~~EST - & PAV'T.~~ - ~~RIGHT~~ YES
10.00 LT. EDGE PAVEMENT
 S.L.M. 300+16



REC!
 PK & WASHER
 ATOP I. PIPE -
 NOT ON SECTION LINE

STEEL POST FOR
 UNDERGROUND
 CABLE MARKER
 NOTCH 1.0' UP
 OUTSIDE E LEG
 OF 2 POST STOP SIGN

SET PK/WASHER
 8-31-01
 S.A.H.



PAVEMENT

SR 4122

55.47'

SR 5102

40.04'

NOTCH 1.5' UP
 TEL. CABLE MARKER
 SIGN

SET PK

SET NAIL & SHI.

103.19' (REC)

31.35'

PAVEMENT

O.D.O.T. DISTRICT 2 SURVEY OFFICE

3

PERSONNEL

REFERENCE NO. 11

SHEET _____ OF _____

NOTES COONIN (DRAW)

DRAWN 3/08/89

H.C. RIPPLE

DATE 11/01/89

R.C. BARBOUR

WEATHER SUNNY

GEYMAN

TEMP. 50°

ROUTE # 412

COUNTY SANDUSKY

TOWNSHIP RILEY

SECTION 25 or 26

T 5 N R 16 E

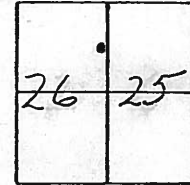
TYPE MONUMENT P.K. & WASHER

ON SURFACE - BELOW _____

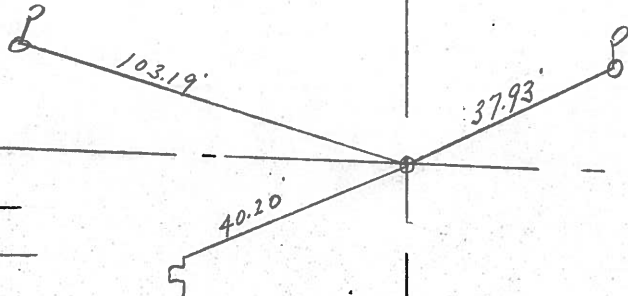
LEFT - PAV'T. - RIGHT _____

TO _____ EDGE PAVEMENT

S.L.M. _____



S.R. # 412



P.K. & WASHER TOP

I. PIPE - NOT ON

SECTION LINE

STEEL POST FOR
UNDERGROUND
CABLE MARKER

County SANDUSKY S.R. 412

Date 7/13/81

Township Riley

Weather OVERCAST - HUMID

Section 25 E' or 26

Temp. 78°

T5N, R16E

Personnel CRONIN

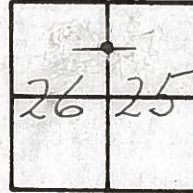
RIPPLE

GEYMAN

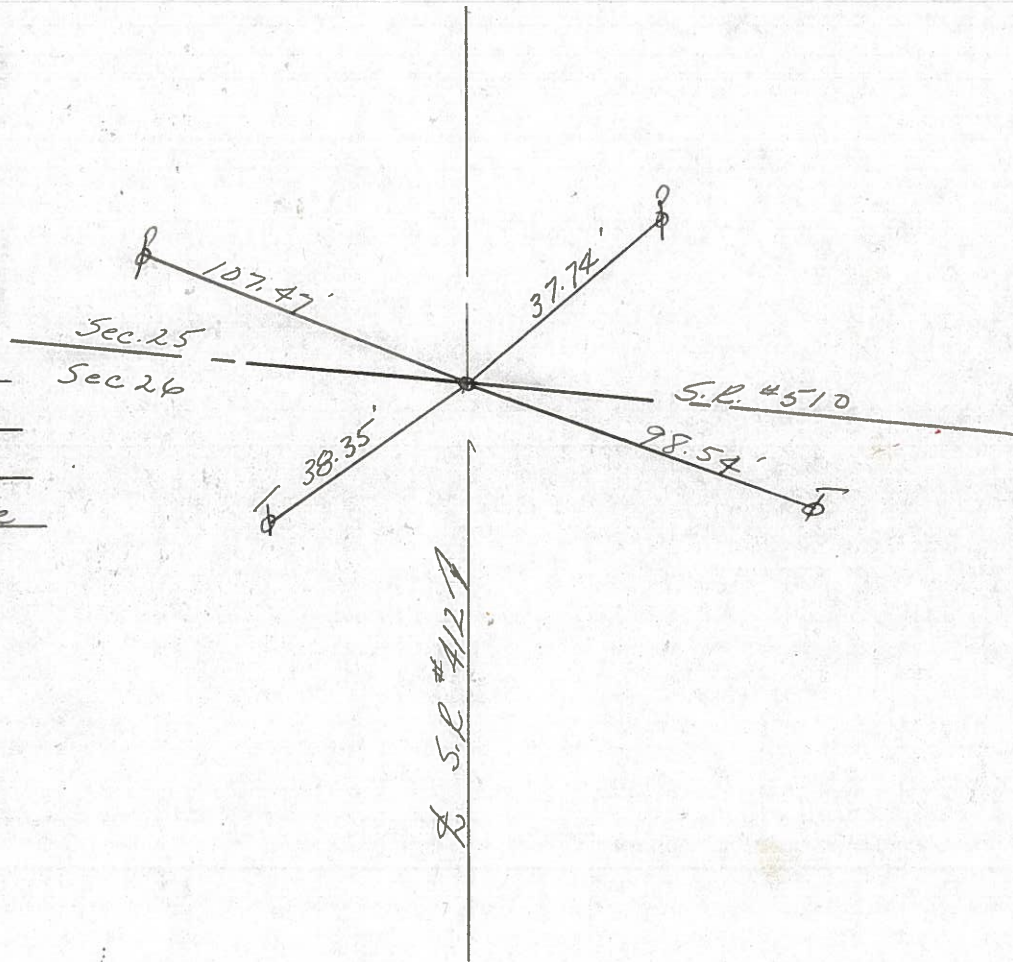
MOSSER

BARBOUR

#11



I. pipe 1 7/8" below
 surface. Reset P.K.
 nail & washer
 Not on Section line



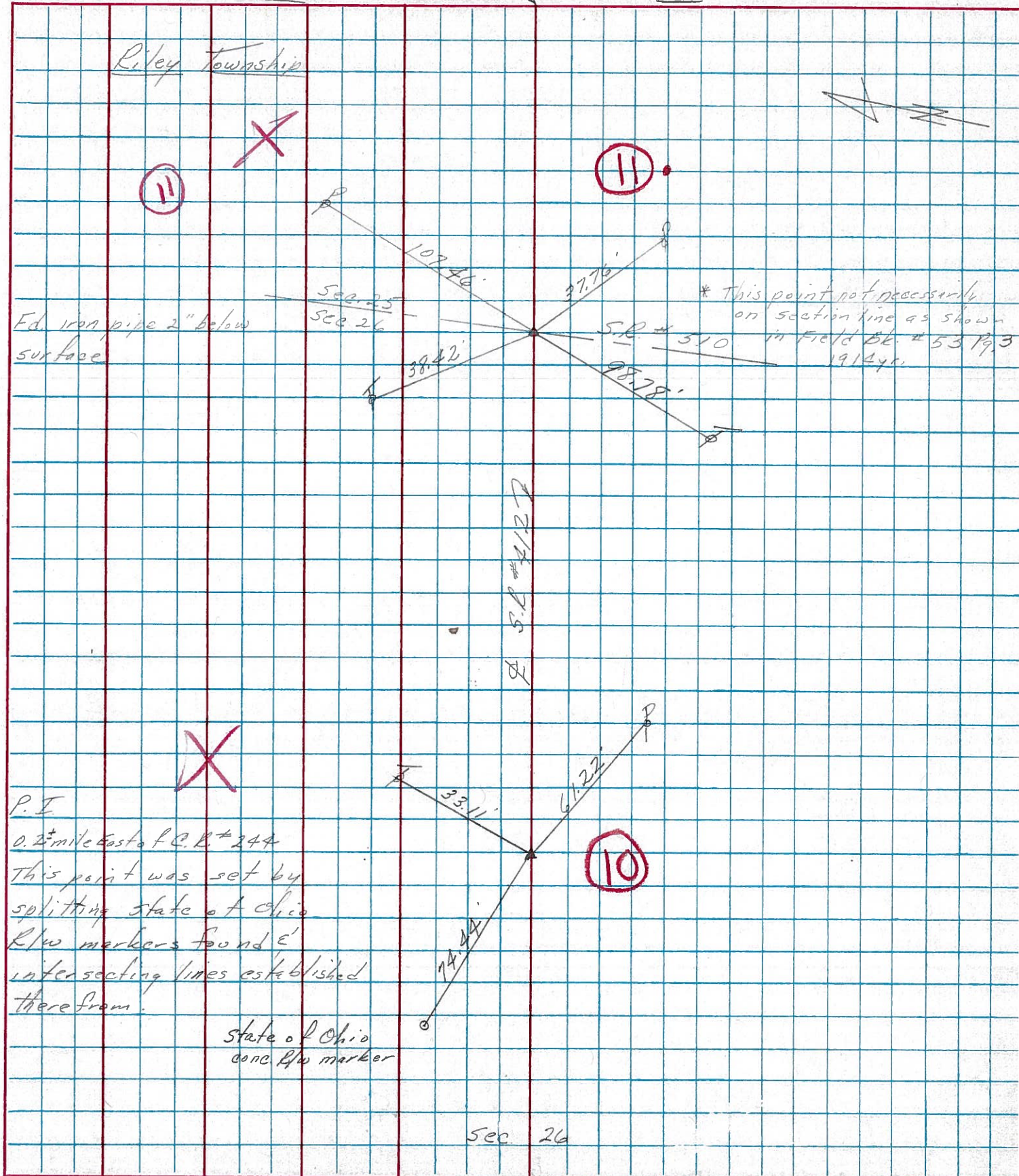
S.L. #412

THESE HAVE BEEN REPLACED WITH NEW SHEETS

SHEET NO. 9

PERSONNEL	TITLE	PERSONNEL	TITLE	COUNTY	DATE	WEATHER	TEMP.
Cronin		Schneider		Sandusky	tied 2/4/75	overcast	30°
Ash		Mosser			Drawn 1/30/75		
Ripple		Barbour-S.L.		S. R. # 412			
Geyman-S.L.				SEC.			

DESCRIPTION Ties for Control Points JOB NO. _____

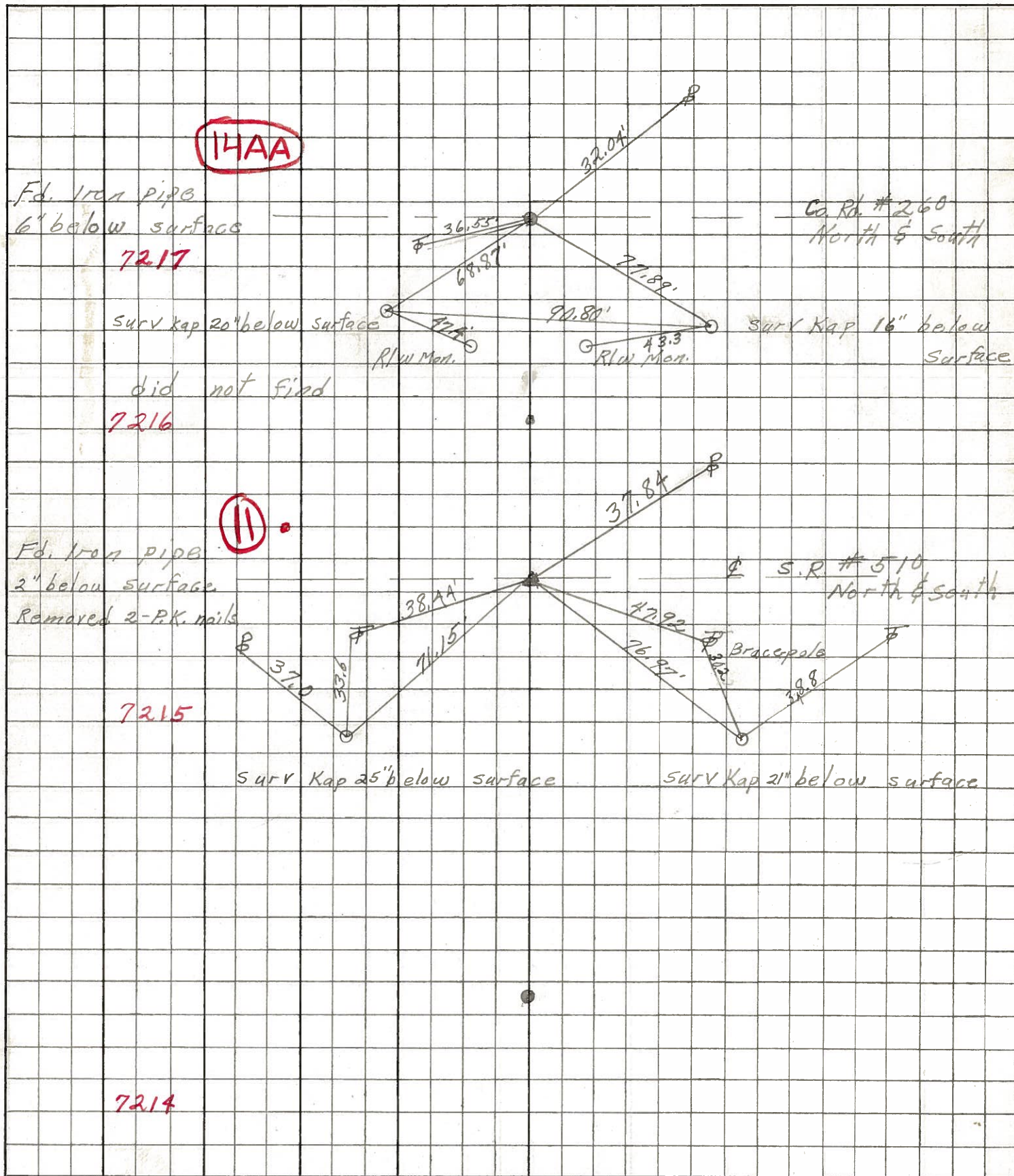


PERSONNEL	TITLE	PERSONNEL	TITLE
Schneider		Potts	
Mosser			
Barbour			
Redding			

COUNTY Sandusky DATE Jan. 1968
 S. R. 412 WEATHER _____
 SEC. N. E. of Fremont TEMP. _____

DESCRIPTION Ties for Control Points JOB NO. _____

LEFT CENTER LINE RIGHT



7214