

O.D.O.T. DISTRICT 2 SURVEY OFFICE (USE ONLY)

PERSONNEL

REFERENCE NO. 14 AA

SHEET 7 OF 32

NOTES LEU

DATE 6/23/15

ROUTE SR 412

H.C. LEU

WEATHER PTLY CLOUDY

COUNTY SANDUSKY

R.C. HOMAN

TEMP. 80°

TOWNSHIP TOWNSEND

SECTION 30

DWG BY NIESE

PID 95765

T 5 N R 17 E

TYPE MONUMENT P.K./WASHER

ON SURFACE - ~~BELOW~~ ON

OFFSET CL PAVEMENT 1.5' ~~LT~~ : RT

- TO - EDGE PAVEMENT

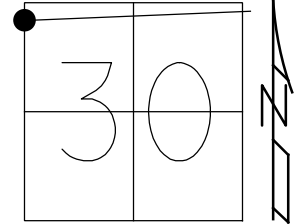
STATION: 353+44.18

HORZ. DATUM: NAD83(2011)

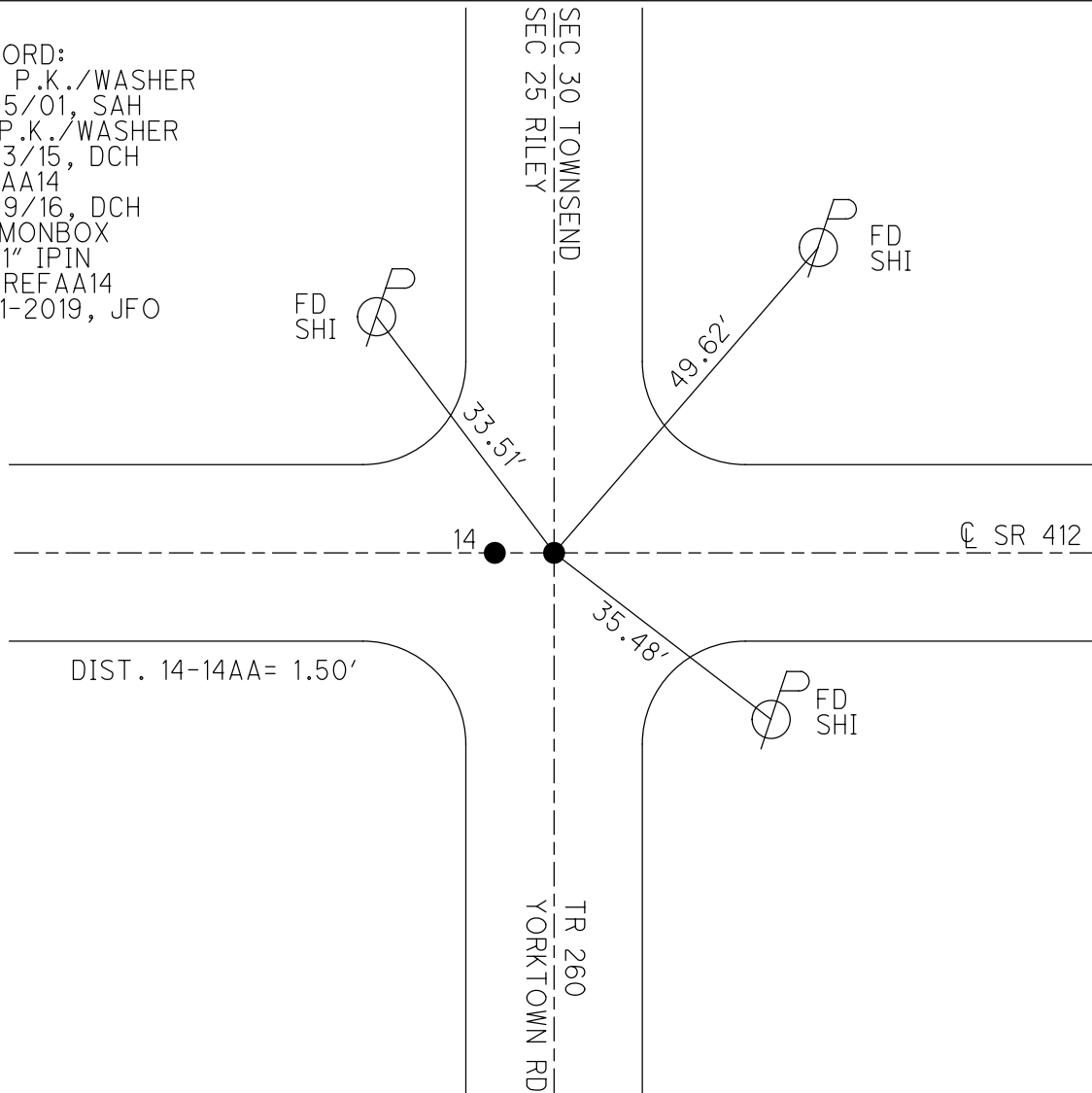
GEOID: 2012A

GRID: NORTHING: 621229.795

EASTING: 1843794.903



RECORD:  
 SET P.K./WASHER  
 7/05/01, SAH  
 FD P.K./WASHER  
 6/23/15, DCH  
 REFAA14  
 11/29/16, DCH  
 FD MONBOX  
 W/ 1" IPIN  
 NEWREFAA14  
 8-21-2019, JFO



O.D.O.T. DISTRICT 2 SURVEY OFFICE (USE ONLY)

PERSONNEL \_\_\_\_\_ REFERENCE NO. 14 AA SHEET 7 OF 34

NOTES LEU DATE 06-23-2015 ROUTE SR 412

H.C. LEU WEATHER PARTLY CLOUDY COUNTY SANDUSKY

R.C. HOMAN TEMP. 80°F TOWNSHIP TOWNSEND

SECTION 30

T 5 N R 17 E

TYPE MONUMENT PK & WASHER

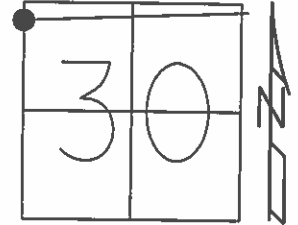
ON SURFACE - ~~BELOW~~ ON \_\_\_\_\_

~~LEFT~~ - ☉ PAV'T - RIGHT 1.5'

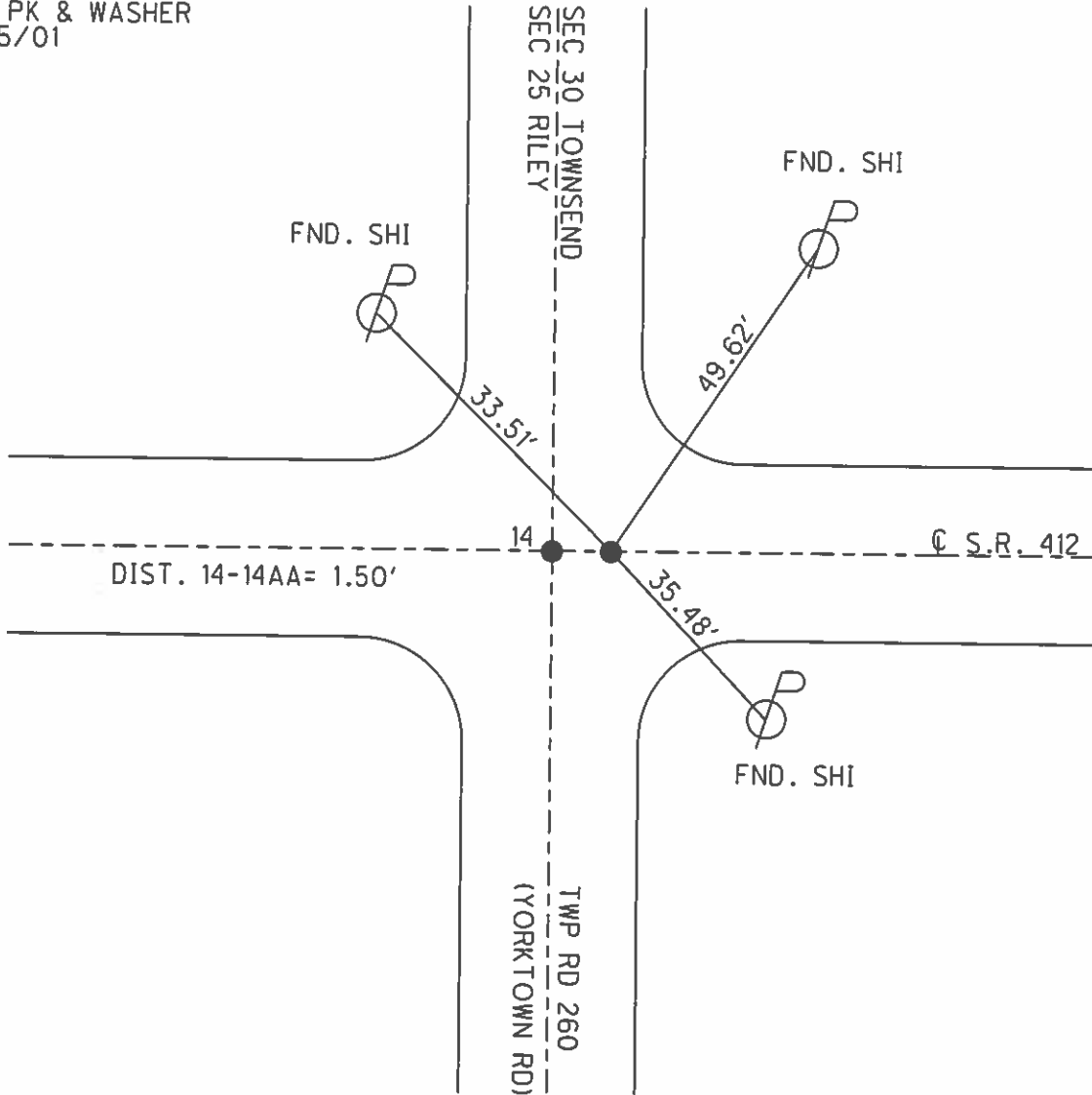
- TO - EDGE PAVEMENT

S.L.M. 354+06.5

Grid: Northing: 621229.913 Easting: 1843794.859



SET PK & WASHER  
7/05/01





O.D.O.T. DISTRICT 2 SURVEY OFFICE

7

PERSONNEL

REFERENCE NO. 14

SHEET \_\_\_\_\_ OF \_\_\_\_\_

NOTES CRONIN (DRAW)

DRAWN 3/08/89

H.C. RIPPLE

DATE 11/01/89

ROUTE # 412

R.C. BARBOUR

WEATHER SUNNY

COUNTY SANDUSKY

GEYMAN

TEMP. 50°

TOWNSHIP RILEY

SECTION 25

T 5 N R 16 E

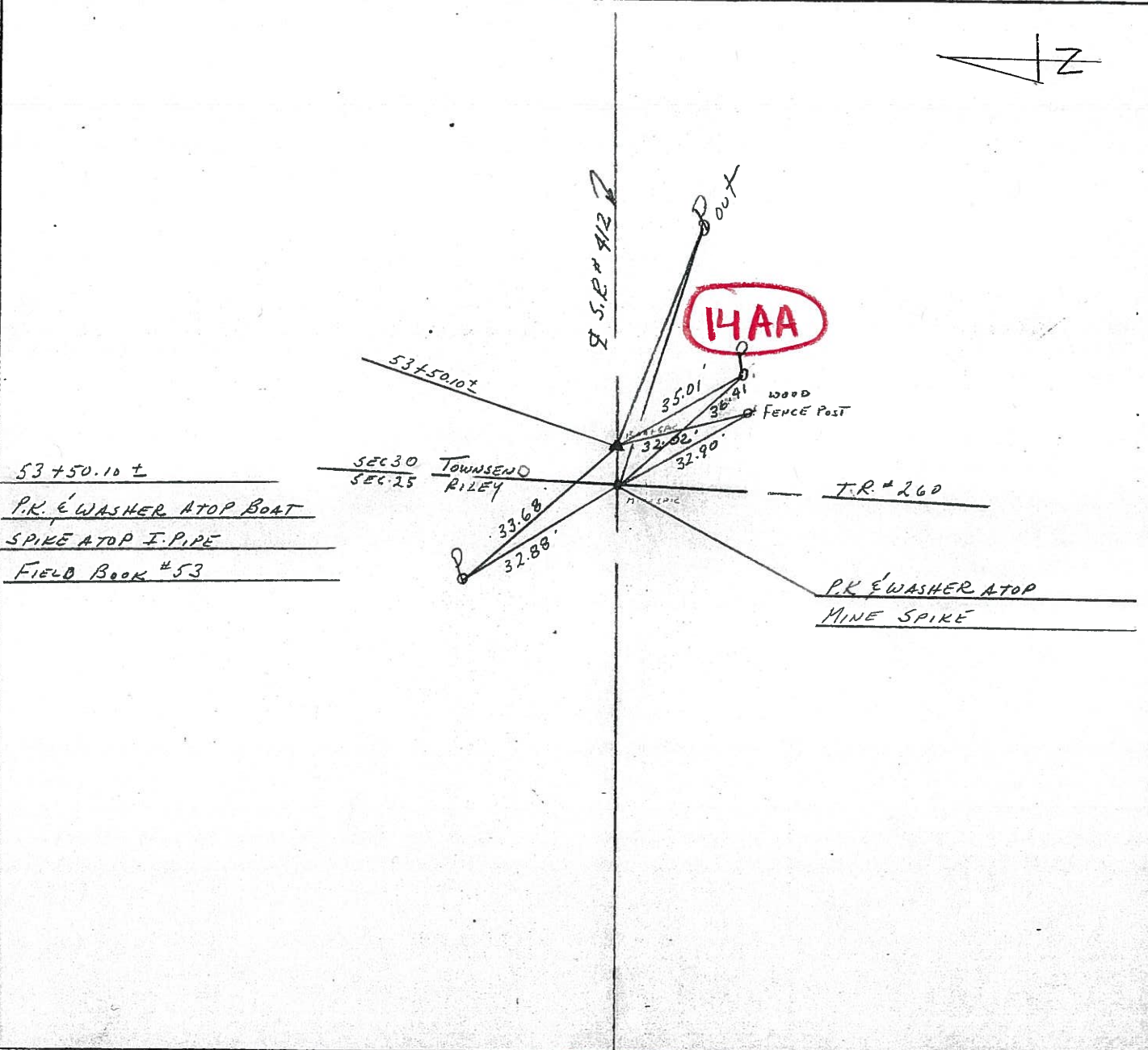
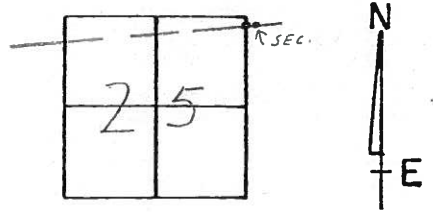
TYPE MONUMENT P.K. & WASHER

ON SURFACE - BELOW \_\_\_\_\_

LEFT- & PAV'T. - RIGHT 1'

TO \_\_\_\_\_ EDGE PAVEMENT

S.L.M. 53+50.10±



53+50.10 ±  
P.K. & WASHER ATOP BOAT  
SPIKE ATOP I.P.I.P.E  
FIELD BOOK #53

P.K. & WASHER ATOP  
MINE SPIKE

County SANDUSKY S.R. 412

Date 7/14/81 DRAWN 8/4/81

Township RILEY

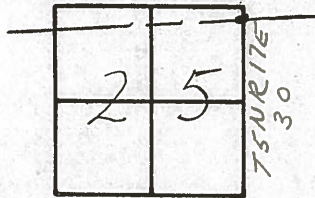
Weather SUNNY

Section 25 E 30

Temp. 68°

T5N, R16E

Personnel CRONIN



RIPPLE

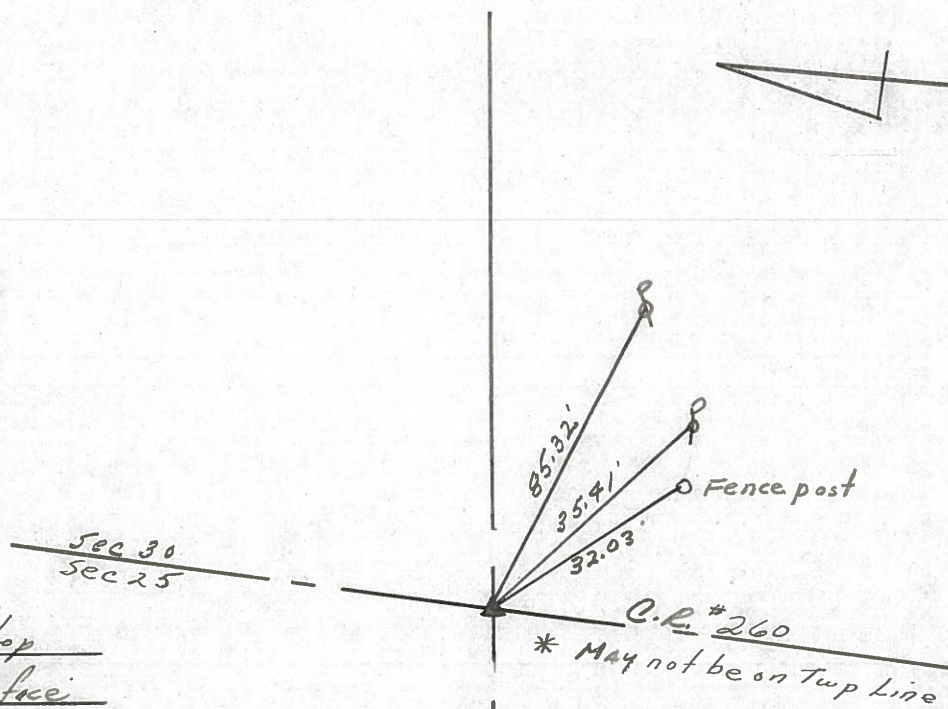
**14AA**

GEYMAN

MOSSER

BARBOUR

#14



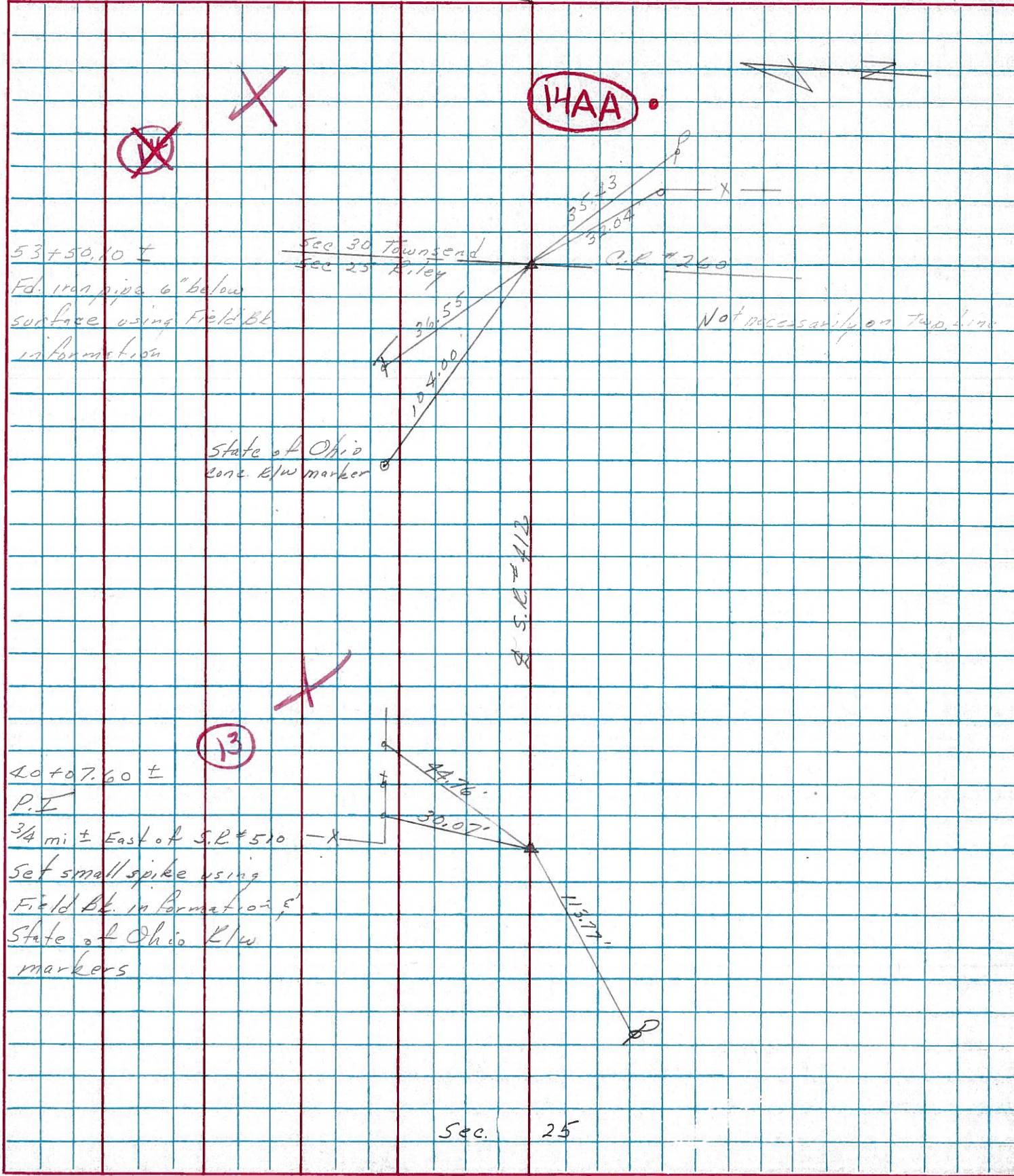
53+50.10 ±  
Reset ball spike at top  
iron pipe 7" below surface  
Ref. Field Bk #53

S.R. #412

PERSONNEL	TITLE	PERSONNEL	TITLE
Cronin			
Ash			
Ripple			
Geyman			

COUNTY Sandusky DATE Tied 2/4/75  
Drawn 2/3/75  
 S. R. # 412 WEATHER overcast  
 SEC. # 1 - Field Bk # 53 TEMP. 30°

DESCRIPTION Ties for Control Points JOB NO. \_\_\_\_\_

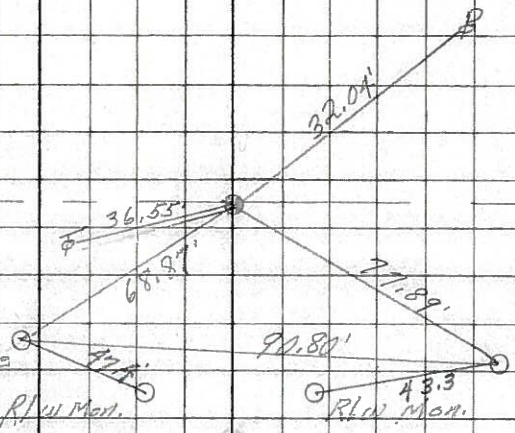


PERSONNEL	TITLE	PERSONNEL	TITLE	COUNTY	DATE	WEATHER	TEMP.
Schneider		Potts		Sandusky	Jan. 1968		
Mosser				S. R. 412			
Barbour				SEC. N.E. of Fremont			
Redding							
DESCRIPTION				Ties for Control Points		JOB NO.	
LEFT		CENTER LINE		RIGHT			

**14AA**

Fd. Iron Pipe  
6" below surface  
**7217**

Surv Kap 20" below surface  
did not find  
**7216**



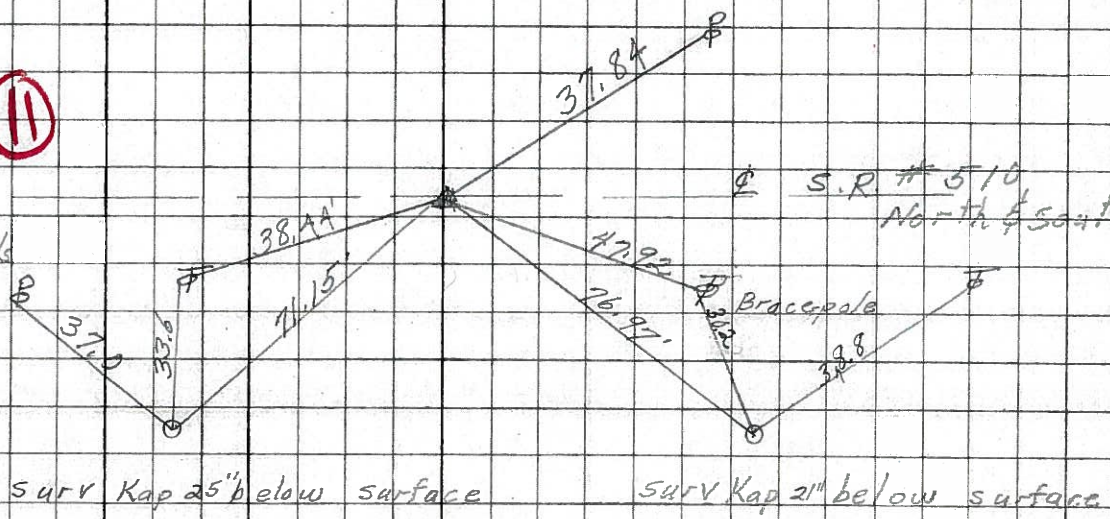
Co. Rd # 260  
North & South

Surv Kap 16" below surface

**11**

Fd. Iron Pipe  
2" below surface  
Removed 2-P.K. nails

**7215**



S.R. # 510  
North & South

Surv Kap 25" below surface

Surv Kap 21" below surface

**7214**