

O.D.O.T. DISTRICT 2 SURVEY OFFICE (USE ONLY)

PERSONNEL

REFERENCE NO. 14 A

SHEET 8 OF 32

NOTES LEU DATE 6/23/15
 H.C. LEU WEATHER SUNNY
 R.C. HOMAN TEMP. 80°

ROUTE SR 412
 COUNTY SANDUSKY
 TOWNSHIP TOWNSEND
 SECTION 30
 T 5 N R 17 E

DWG BY NIESE PID 95765

TYPE MONUMENT P.K. NAIL

ON SURFACE - ~~BELOW~~ ON _____

OFFSET $\text{\textcircled{C}}$ PAVEMENT 3.4' LT : ~~RT~~

6.0' TO LT EDGE PAVEMENT

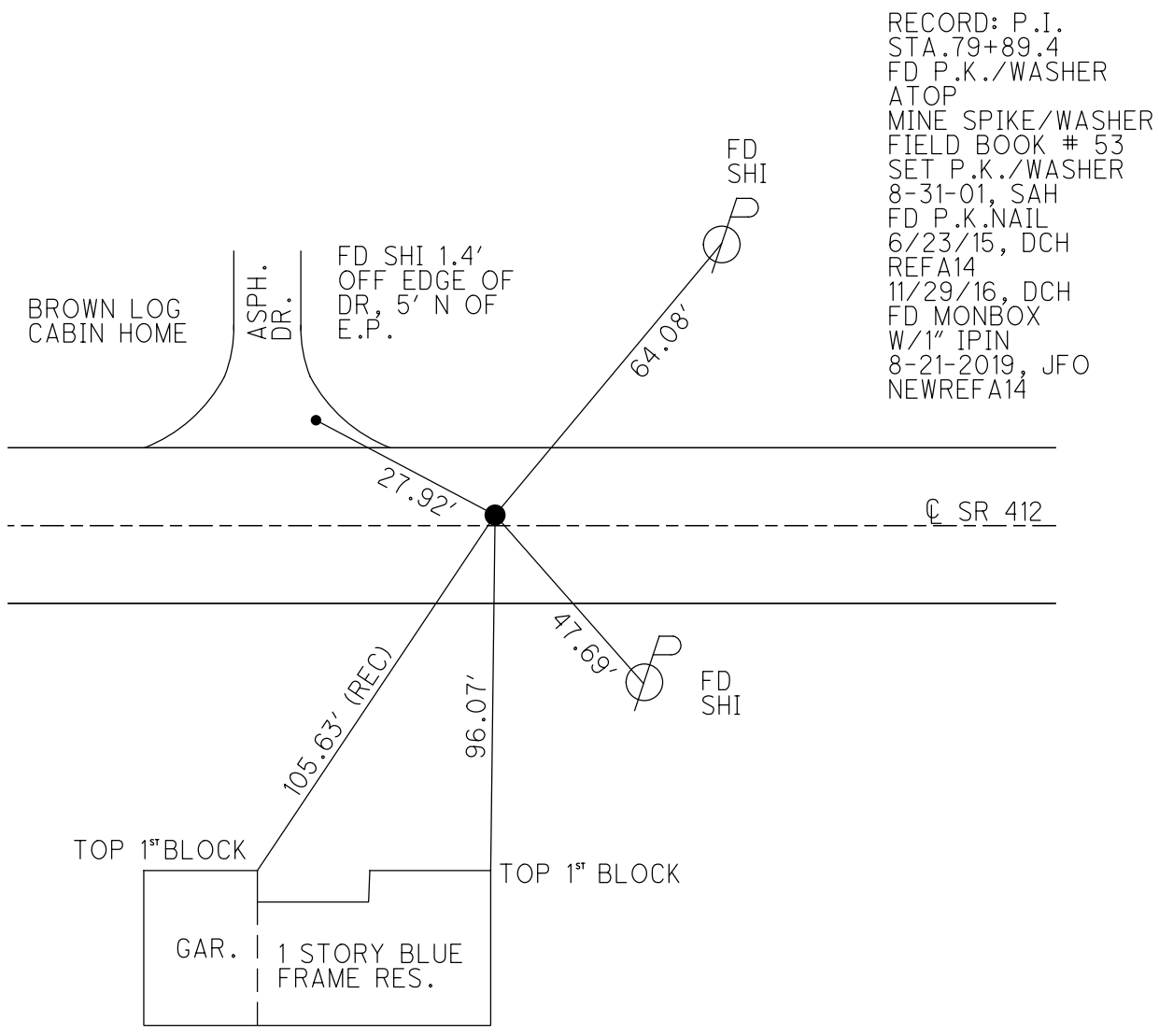
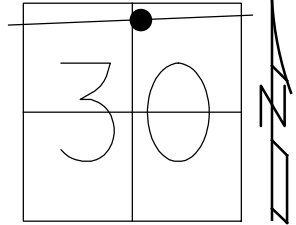
STATION: 379+83.45

HORZ.DATUM: NAD83(2011)

GEOID: 2012A

GRID: NORTHING: 621564.581

EASTING: 1846412.889



RECORD: P.I.
 STA. 79+89.4
 FD P.K./WASHER
 ATOP
 MINE SPIKE/WASHER
 FIELD BOOK # 53
 SET P.K./WASHER
 8-31-01, SAH
 FD P.K.NAIL
 6/23/15, DCH
 REFA14
 11/29/16, DCH
 FD MONBOX
 W/1" IPIN
 8-21-2019, JFO
 NEWREFA14

O.D.O.T. DISTRICT 2 SURVEY OFFICE

PERSONNEL

REFERENCE NO. 14A

SHEET 7 OF 11

NOTES TED ROUSOS

H.C. VAN DUSEN

DATE 7-05-01

ROUTE 412

R.C. ADAM B.

WEATHER SUNNY

COUNTY SANDUSKY

TEMP. +75° F

TOWNSHIP TOWNSEND

SECTION 30

T5 N R 17 E

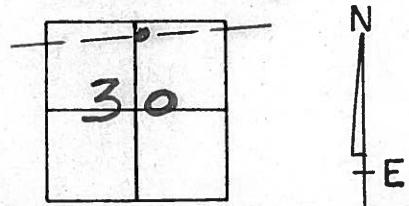
TYPE MONUMENT PK/WASHER

ON SURFACE - BELOW YES

LEFT- & PAV'T. - RIGHT 3.4'

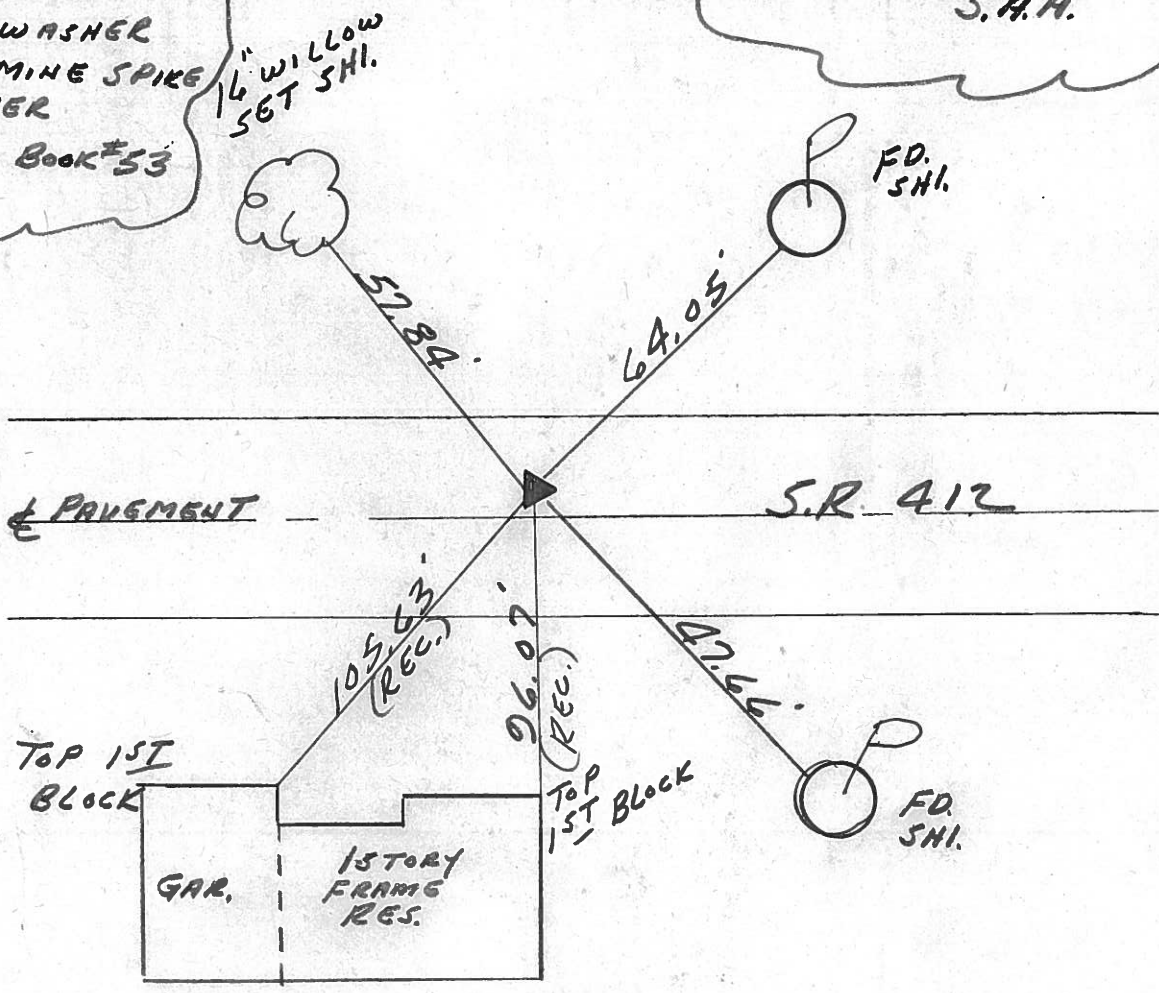
6.0 TO LT EDGE PAVEMENT

S.L.M. 380+59



REC:
P.I.
79+89.4±
P.K. & WASHER
ATOP MINE SPIKE
& WASHER
FIELD BOOK #53

SET PK & WASHER
8-31-01
S.A.H.



1/4" WILLOW
SET SHI.

FD.
SHI.

FD.
SHI.

57.84'

64.05'

105.63'
(REC.)

96.07'
(REC.)

47.66'

O.D.O.T. DISTRICT 2 SURVEY OFFICE

8

PERSONNEL

REFERENCE NO. _____

SHEET _____ OF _____

NOTES CROWIN (DRAW)

DRAWN 3/08/89

H.C. RIPPLE

DATE 11/01/89

ROUTE #412

R.C. BARBOUR

WEATHER SUNNY-WINDY

COUNTY SANDUSKY

GEYMAN

TEMP. 53°

TOWNSHIP TOWNSEND

SECTION 30

T 5 N R 17 E

TYPE MONUMENT P.K. & WASHER

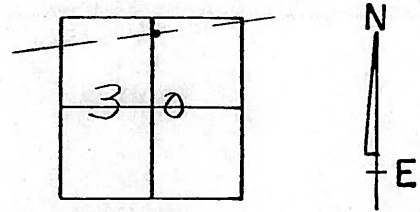
ON SURFACE - BELOW _____

LEFT- & PAV'T. - RIGHT 3.4

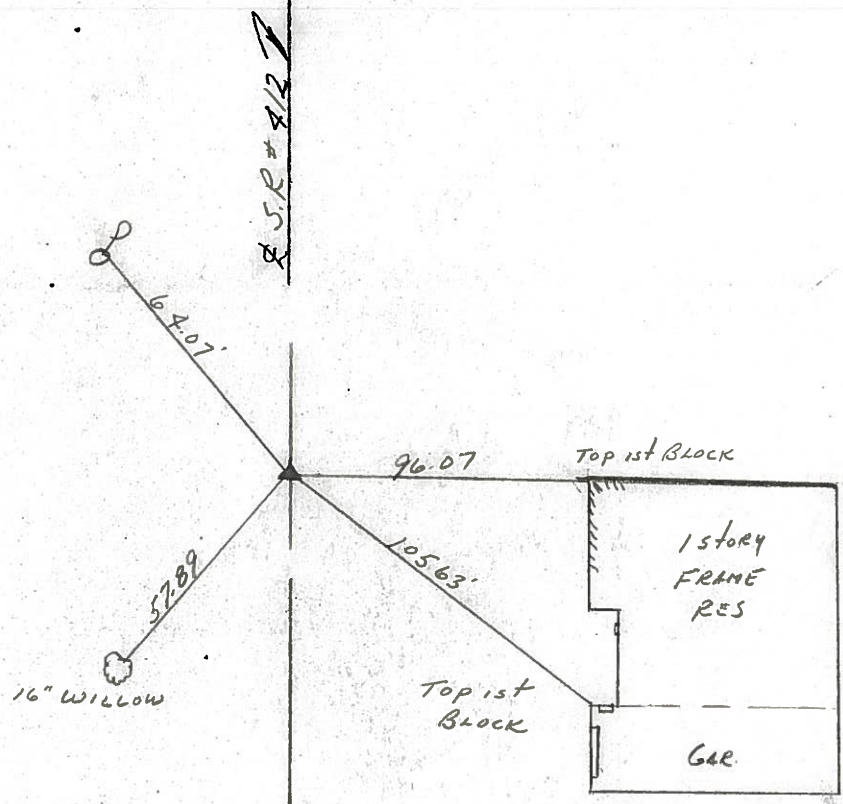
TO _____ EDGE PAVEMENT

S.L.M. 79+89.4 ±

14A



P.I.
79+89.4 ±
P.K. & WASHER ATOP
MINE SPIKE & WASHER
FIELD BOOK # 53



Z

County SANDUSKY S.R. 412

Date 7/14/81 Draw 8/4/81

Township TOWNSEND

Weather SUNNY

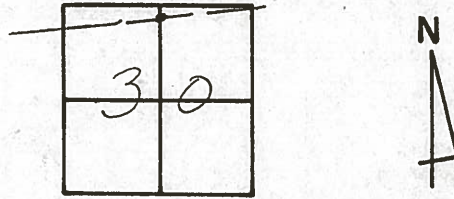
Section 30

Temp. 68°

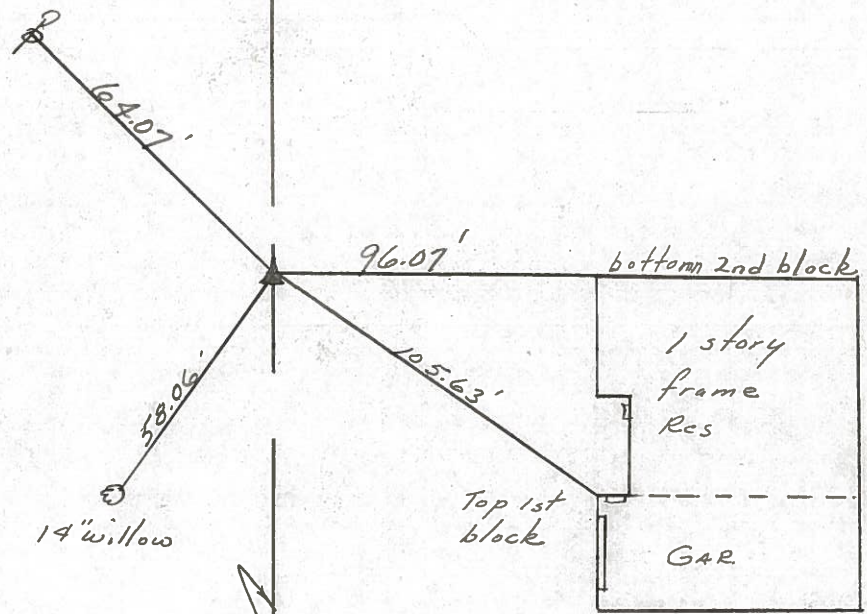
T⁵N, R12E

Personnel CRONIN
RIPPLE
GEYMAN
MOSSER
BARBOUR

14A



P.I.
79+89.4 ±
Reset mine spike 3' ± Lt
o & Permit. - Ref Field Bk #53



S.R. # 412

PERSONNEL	TITLE	PERSONNEL	TITLE
Cronin			
Ash			
Ripple			
Geyman			

COUNTY Sandusky

S. R. #412

WEATHER sunny

SEC. #1 - Field Bk #53

TEMP. 65°

DESCRIPTION Ties for Control Points

JOB NO.

