

O.D.O.T. DISTRICT 2 SURVEY OFFICE (USE ONLY)

PERSONNEL _____

REFERENCE NO. 15

SHEET 9 OF 32

NOTES AUBLE

DATE 5/1/18

ROUTE SR 412

H.C. LEU

WEATHER SUNNY, BREEZY

COUNTY SANDUSKY

R.C. AUBLE

TEMP. 74°

TOWNSHIP TOWNSEND

SECTION 30

DWG BY NIESE PID 95765

T 5 N R 17 E

TYPE MONUMENT P.K./WASHER

ON SURFACE - ~~BELOW~~ ON _____

OFFSET \odot PAVEMENT 3.4' LT : ~~RT~~

9.1' TO LT EDGE PAVEMENT

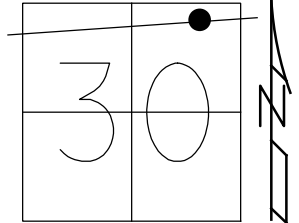
STATION: 399+04.84

HORZ.DATUM: NAD83(2011)

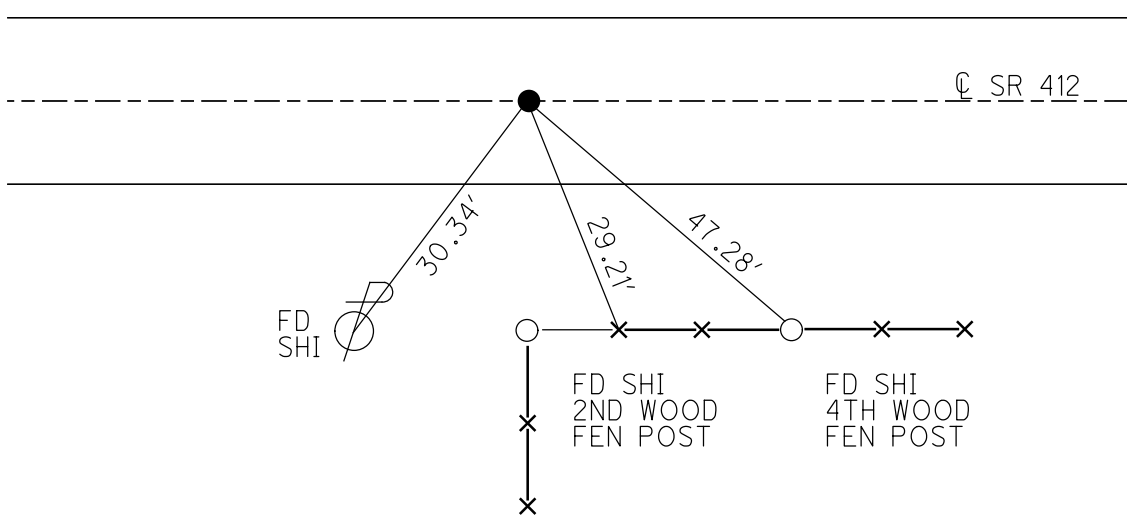
GEOID: 2012A

GRID: NORTHING: 621786.737

EASTING: 1848321.336



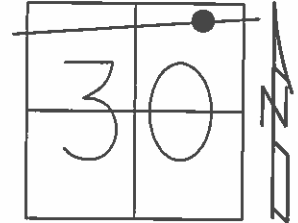
RECORD: P.I.
 STA. 99+11±
 FD P.K./WASHER
 ATOP P.K./WASHER
 ATOP BOAT SPIKE
 FIELD BOOK # 53
 SET P.K./WASHER
 8-31-01, SAH
 FD P.K./WASHER
 6/23/15, DCH
 REF15
 11/29/16, DCH
 SET MAG/WASHER
 REF15
 8-21-19, JFO



O.D.O.T. DISTRICT 2 SURVEY OFFICE (USE ONLY)

PERSONNEL _____ REFERENCE NO. 15 SHEET 9 OF 34
 NOTES LEU DATE 06-23-2015 ROUTE SR 412
 H.C. LEU WEATHER SUNNY COUNTY SANDUSKY
 R.C. HOMAN TEMP. 80°F TOWNSHIP TOWNSEND
 SECTION 30
 T 5 N R 17 E

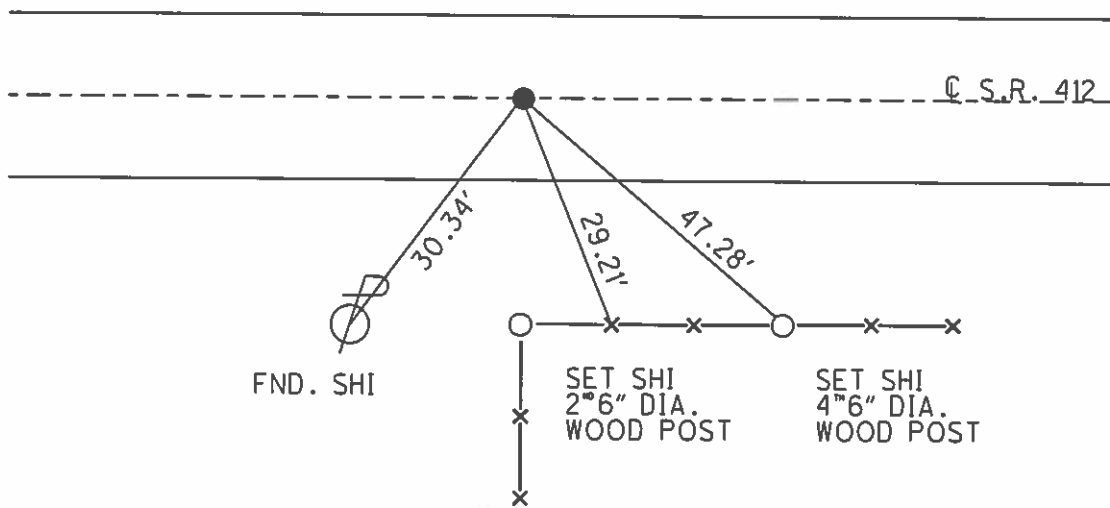
TYPE MONUMENT PK & WASHER
 ON SURFACE - ~~BELOW~~ ON _____
 LEFT - ☉ PAV'T - ~~RIGHT~~ 0.5'
9.1' TO LT. EDGE PAVEMENT
 S.L.M. 399+95



Grid: Northing: 621786.737 Easting: 1848321.336

REC:
 P.I.
 99+11±
 PK & WASHER ATOP SAME
 ATOP BOAT SPIKE
 FIELD BOOK # 53

SET PK & WASHER
 08-31-2001 S.A.H.



O.D.O.T. DISTRICT 2 SURVEY OFFICE

PERSONNEL

REFERENCE NO. 15 SHEET 8 OF 11

NOTES TED ROUSOS

H.C. VAN DUSEN

R.C. ADAM B.

DATE 7-05-01

WEATHER SUNNY

TEMP. +75°F

ROUTE 412

COUNTY SANDUSKY

TOWNSHIP TOWNSEND

SECTION 30

T5 NR 17 E

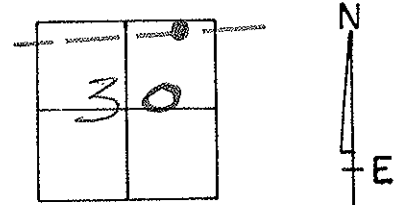
TYPE MONUMENT PK/WASHER

ON SURFACE - BELOW YES

LEFT- ϵ PAV'T. - RIGHT 0.5'

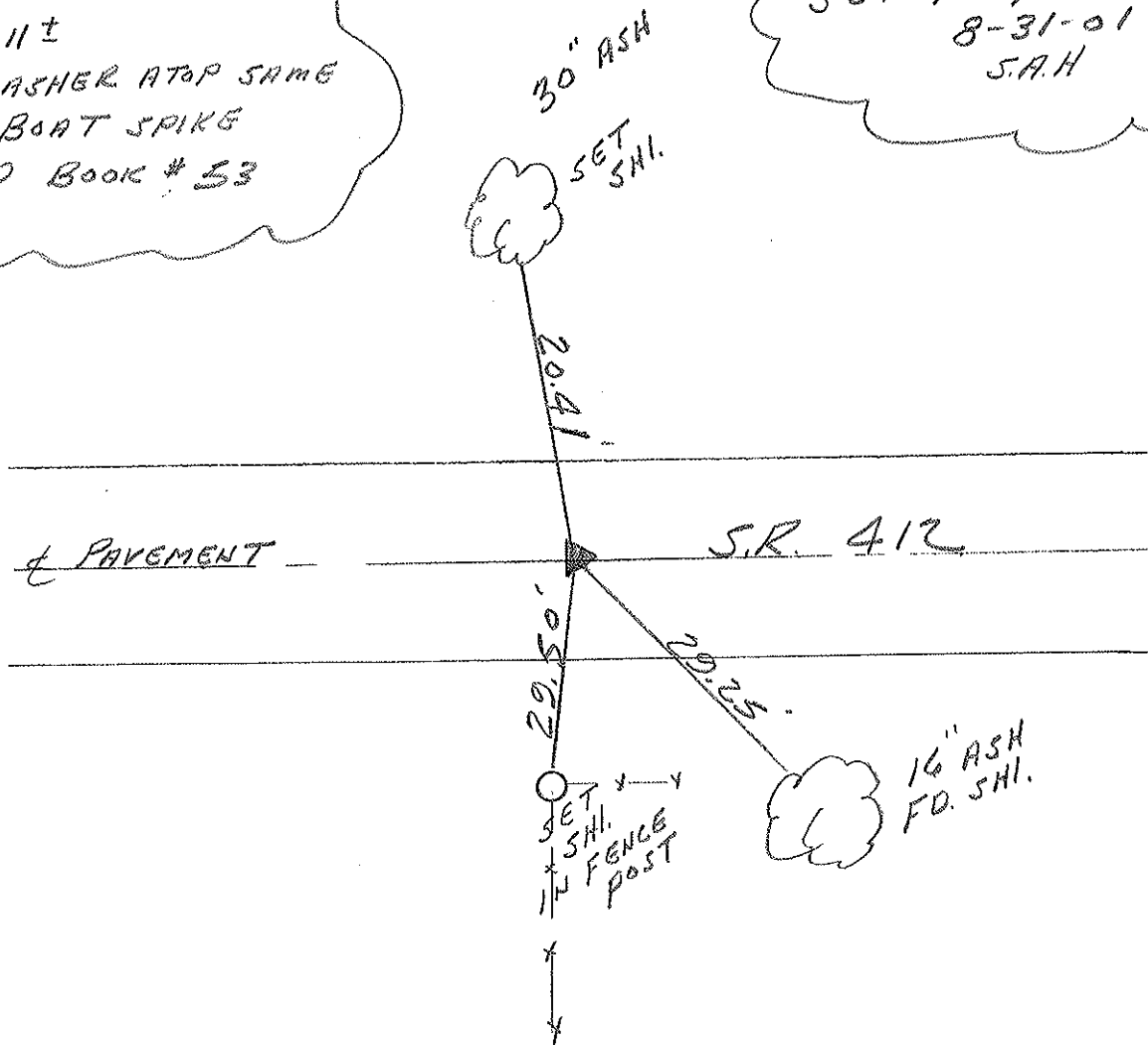
2.1' TO L.T. EDGE PAVEMENT

S.L.M. 399+95



P.I. REC!
 99+11±
 PK/WASHER ATOP SAME
 ATOP BOAT SPIKE
 FIELD BOOK # 33

SET PK & WASHER
 8-31-01
 S.A.H



16" ASH
 FD. SHI.

O.D.O.T. DISTRICT 2 SURVEY OFFICE

9

PERSONNEL

REFERENCE NO. _____

SHEET _____ OF _____

NOTES CROVIN (DRAW)

DRAWN 3/08/89

H.C. RIPPLE

DATE 11/01/89

ROUTE # 412

R.C. BARBOUR

WEATHER SUNNY - WINDY

COUNTY SANDUSKY

GEYMAN

TEMP. 53°

TOWNSHIP TOWSEND

SECTION 30

T 5 N R 17 E

TYPE MONUMENT P.K. & WASHER

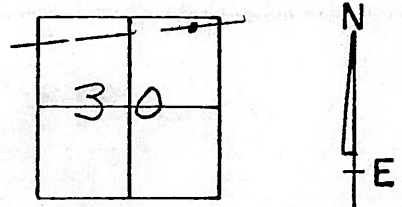
ON SURFACE - BELOW _____

LEFT - & PAV'T. - RIGHT 0.5'

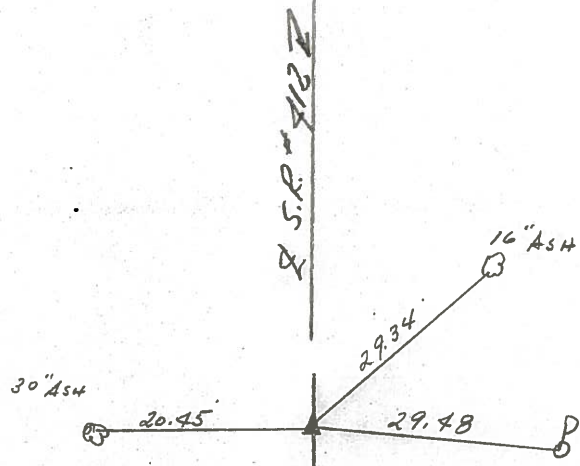
TO _____ EDGE PAVEMENT

S.L.M. _____ 99+11 ±

15



P.F.
99+11 ±
P.K. & WASHER ATOP SAME
ATOP BOLT SPIKE
FIELD BOOK # 53



County SANDUSKY S.R. 412

Date 7/14/81 DRAWN 8/4/81

Township TOWNSEND

Weather SUNNY

Section 30

Temp. 68°

T5N, R17E

Personnel CRONIN

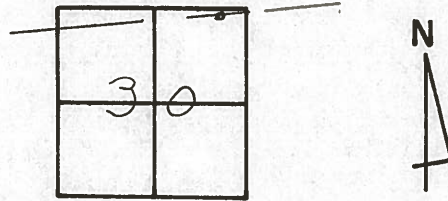
RIPPLE

GEYMAN

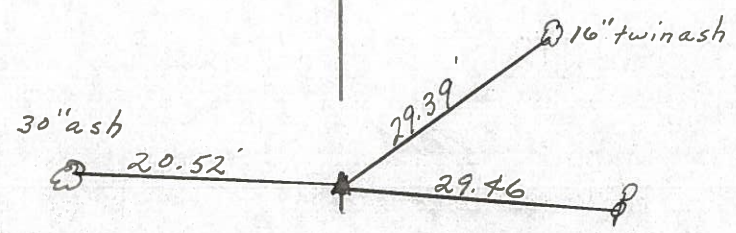
MOSSER

BARBOUR

15



P.I.
 99+11 ±
 Reset P.K. & Washer at top
 bolt spike. Ref. Field Bk. #53



5.L # 412

PERSONNEL TITLE PERSONNEL TITLE

COUNTY Sandusky

Tied 4/29/75
DATE Drawn 2/3/75

Cronin

Ash

Ripple

Geyman

S. R. #412

WEATHER sunny

SEC. #1 - Field Bk #53

TEMP. 65°

DESCRIPTION Ties for Control Points

JOB NO.

LEFT

CENTER LINE

RIGHT

Townsend Township

Sec. 30



15

P.I.

77+1.5 ±

set small spike using information from Field Bk. of State of Ohio R/W markers

29' Ash

20.59'

29.46'

29.40'

16"

State of

Ohio conc. R/W marker

S.R. #412

14A

P.I.

77+89.4 ±

set small spike - 3' left of ^{point} using information found in Field Bk. of State of Ohio R/W markers

65.07'

96.07'

bottom 2nd block

58.26'

105.65'

1 story frame res

14" maple

top 1st block

Sec. 30