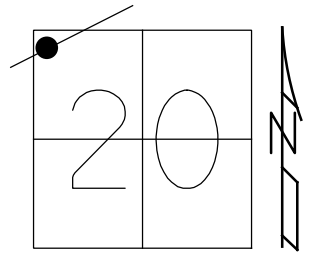


O.D.O.T. DISTRICT 2 SURVEY OFFICE (USE ONLY)

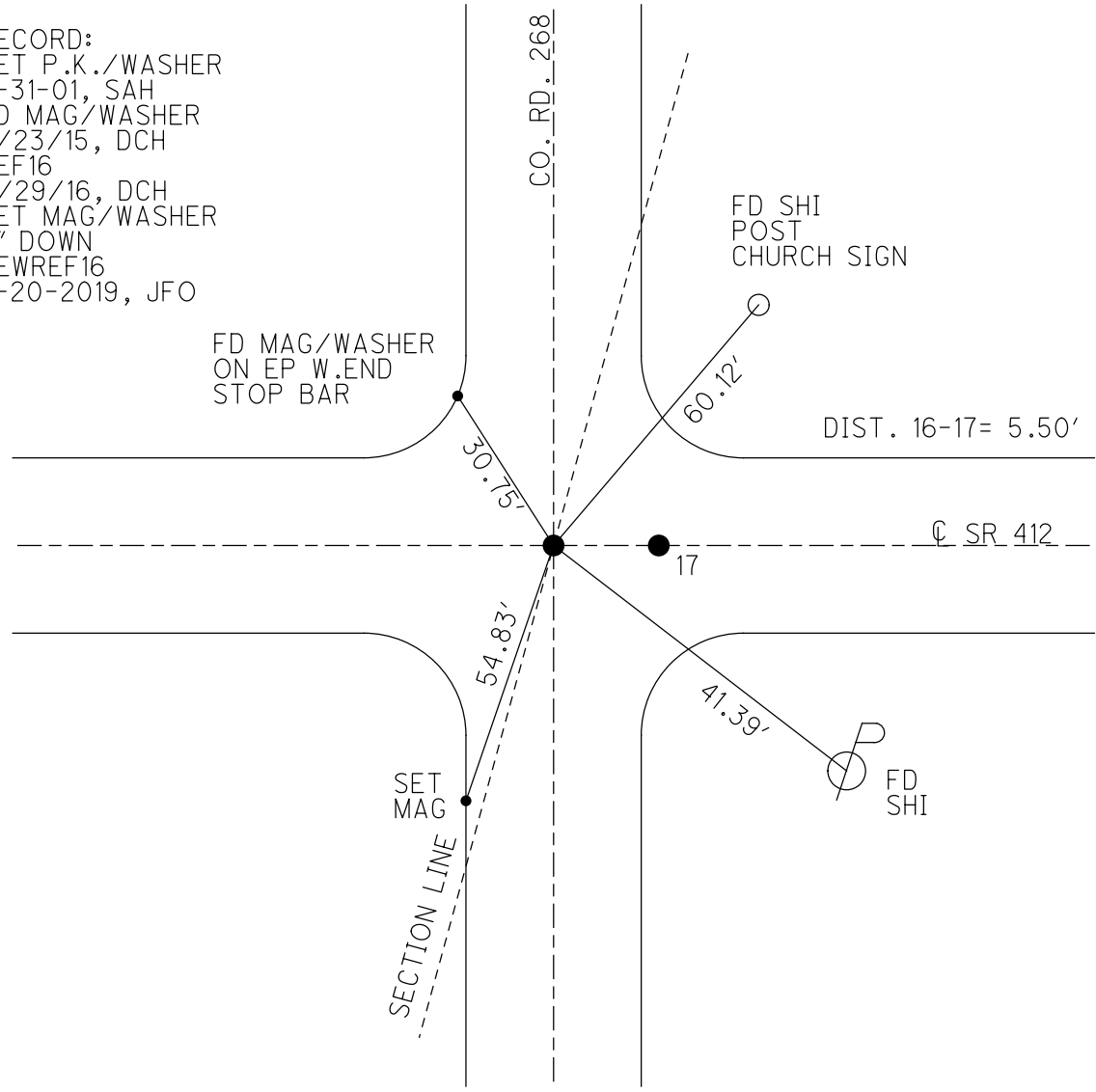
PERSONNEL _____ REFERENCE NO. 16 SHEET 10 OF 32
 NOTES AUBLE DATE 5/1/18 ROUTE SR 412
 H.C. LEU WEATHER SUNNY, BREEZY COUNTY SANDUSKY
 R.C. AUBLE TEMP. 74° TOWNSHIP TOWNSEND
 DWG BY NIESE PID 95765 SECTION 20
 T 5 N R 17 E

TYPE MONUMENT MAG/WASHER
 ON SURFACE - ~~BELOW~~ ON
 OFFSET C PAVEMENT ON LT : RT
- TO - EDGE PAVEMENT
 STATION: 405+48.74

HORZ. DATUM: NAD83(2011) GEOID: 2012A
 GRID: NORTHING: 621867.073 EASTING: 1848960.129



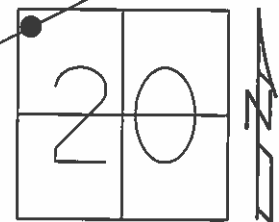
RECORD:
 SET P.K./WASHER
 8-31-01, SAH
 FD MAG/WASHER
 6/23/15, DCH
 REF16
 11/29/16, DCH
 SET MAG/WASHER
 3" DOWN
 NEWREF16
 8-20-2019, JFO



O.D.O.T. DISTRICT 2 SURVEY OFFICE (USE ONLY)

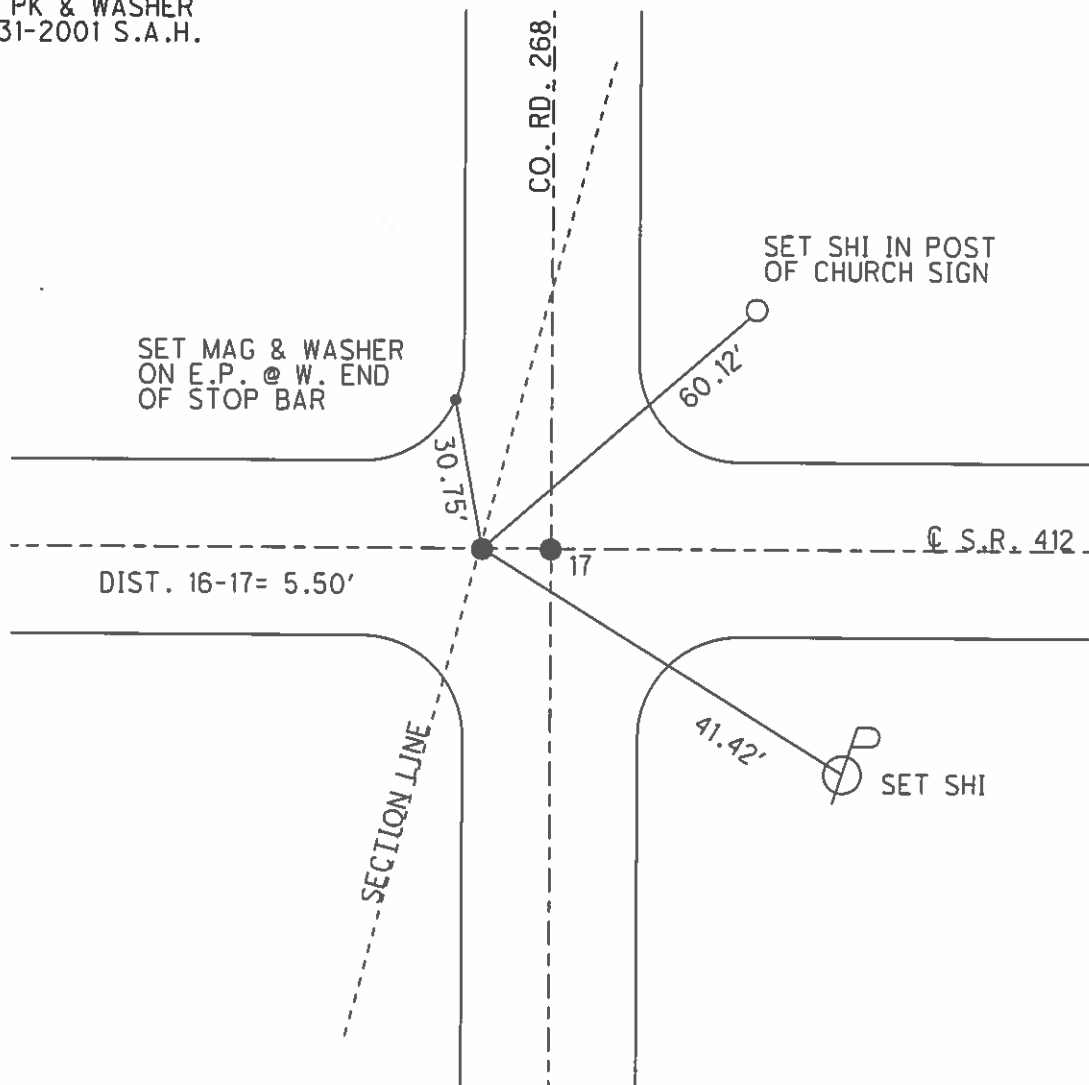
PERSONNEL _____ REFERENCE NO. 16 SHEET 10 OF 34
 NOTES LEU DATE 06-23-2015 ROUTE SR 412
 H.C. LEU WEATHER SUNNY COUNTY SANDUSKY
 R.C. HOMAN TEMP. 80°F TOWNSHIP TOWNSEND
 _____ SECTION 20
 _____ T 5 N R 17 E

TYPE MONUMENT MAG & WASHER
 ON SURFACE - ~~BELOW~~ ON
~~LEFT - C~~ PAV'T - ~~RIGHT~~ ON
TO - EDGE PAVEMENT
 S.L.M. 406+40



Grid: Northing: 621867.073 Easting: 1848960.201

SET PK & WASHER
 08-31-2001 S.A.H.



O.D.O.T. DISTRICT 2 SURVEY OFFICE

PERSONNEL

REFERENCE NO. 16

SHEET 9 OF 11

NOTES TO ROUSES

H.C. B. VAN DUSEN

DATE 7-05-01

ROUTE 412

R.C. A. BROWN

WEATHER SUNNY

COUNTY SANDUSKY

TEMP. + 75° F

TOWNSHIP TOWNSEND

SECTION 20

T5 N R 17 E

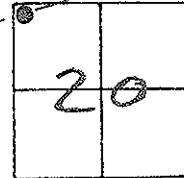
TYPE MONUMENT PK & WASHER

ON SURFACE - ~~BELOW~~ YES

LEFT - & PAV'T. - RIGHT _____

TO _____ EDGE PAVEMENT _____

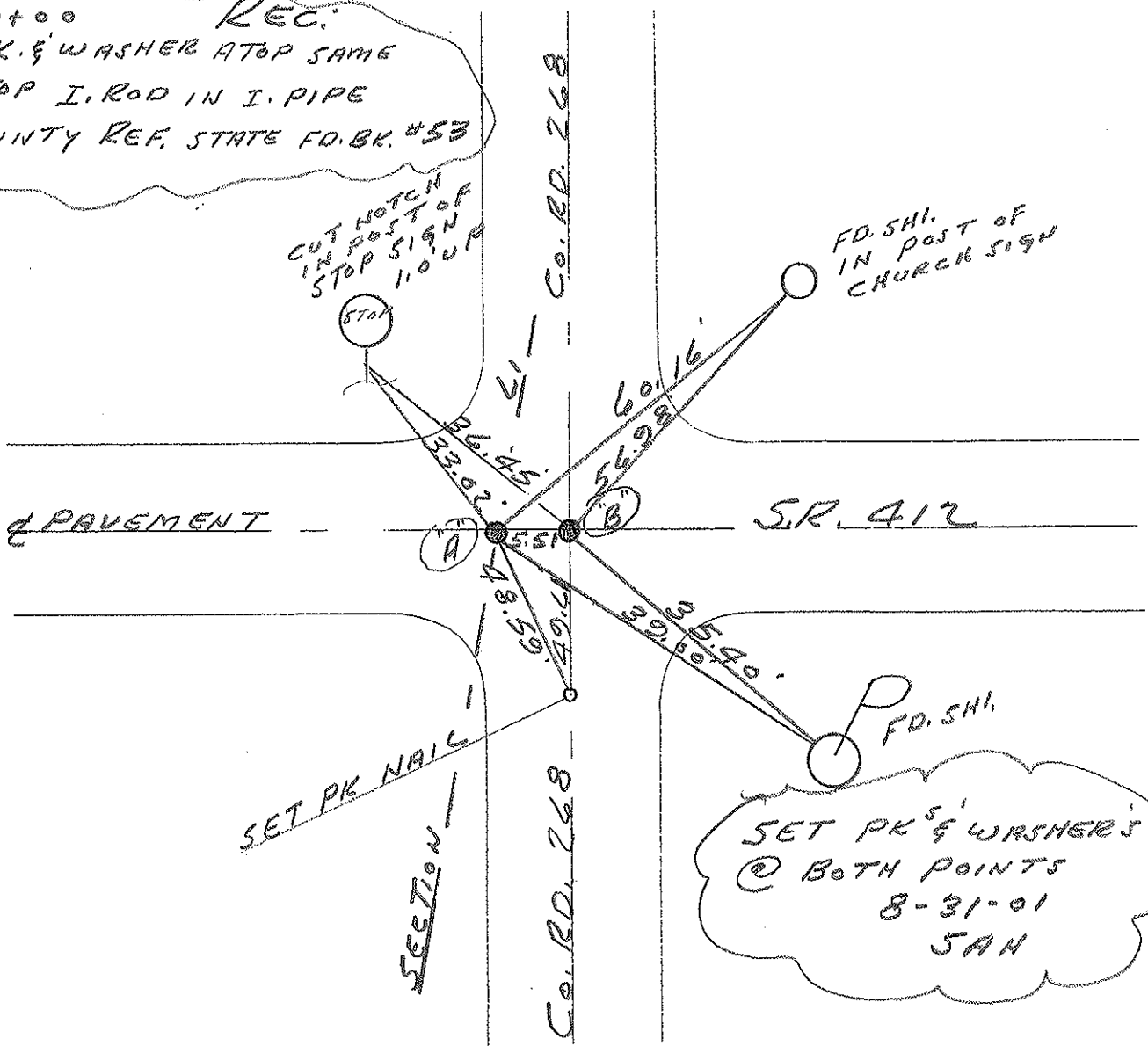
S.L.M. PT. A = 406+40 PT. B = 406+45.51



0+00 REC:
P.K. & WASHER ATOP SAME
ATOP I. ROD IN I. PIPE
COUNTY REF. STATE FD. BK. #53

CUT NOTCH
IN POST OF
STOP SIGN
11.0 UP

FD. SHI.
IN POST OF
CHURCH SIGN



SET PK & WASHER'S
@ BOTH POINTS
8-31-01
JAH

O.D.O.T. DISTRICT 2 SURVEY OFFICE

10

PERSONNEL

REFERENCE NO. 16

SHEET OF

NOTES CRONIN (DRAW)

DRAWN 3/08/89

H.C. PIPPLE

DATE 11/01/89

ROUTE # 412

R.C. BARBOUR

WEATHER SUNNY - WINDY

COUNTY SANDUSKY

GEYMAN

TEMP. 53°

TOWNSHIP TOWNSEND

SECTION 20

T 5 N R 17 E

TYPE MONUMENT P.K. WASHER

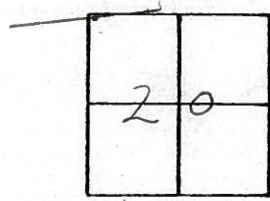
ON SURFACE - BELOW

LEFT - PAV'T. - RIGHT

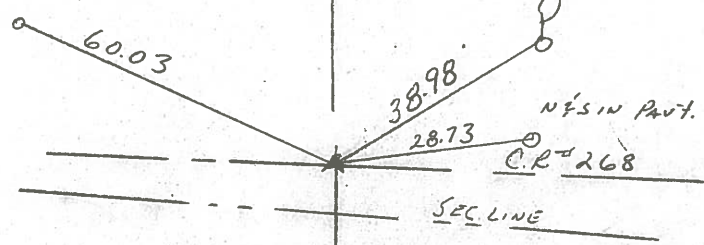
 TO EDGE PAVEMENT

S.L.M. 0+00 AHD

16



N's in Post of Church
Sign (Loose)



0+00
P.K. WASHER ATOP SAME
ATOP I. ROD IN F. PIPE
COUNTY REF - State Fo. Blk # 53

County SANDUSKY S.R. 412

Date 7/17/81 Drawn 8/4/81

Township TOWNSEND

Weather SUNNY

Section 20/19

Temp. 70°

T5N, R12E

Personnel CRONIN

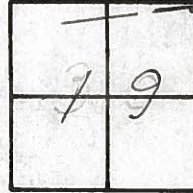
RIPPLE

GEYMAN

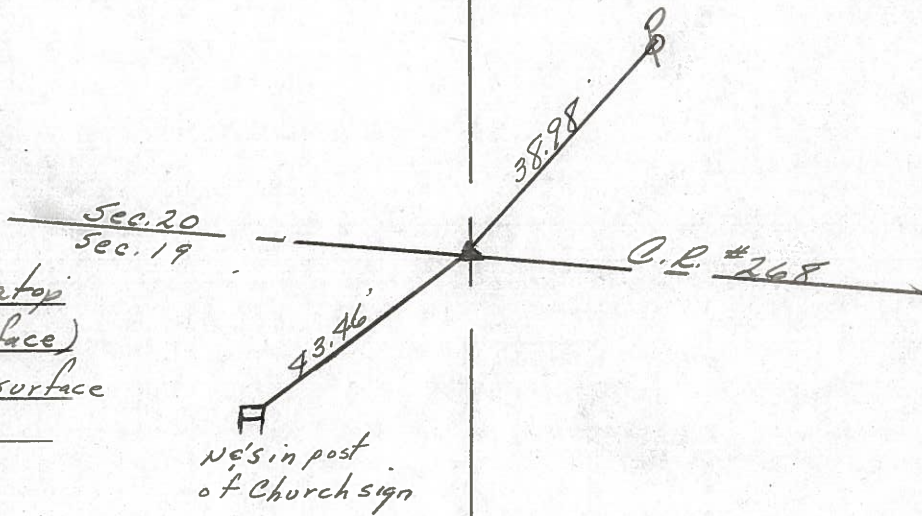
MOSSER

BARBOUR

#110



0+00
 Reset P.K. & washer atop
 I. Pipe (6 3/4" below surface)
 I. Rod in pipe 1" below surface
 County Ref.



S.R. #412

PERSONNEL	TITLE	PERSONNEL	TITLE
Cronin			
Ash			
Ripple			
Geyman			

COUNTY Sandusky

Tied 4/29/75
Drawn 2/13/75

S. R. #412

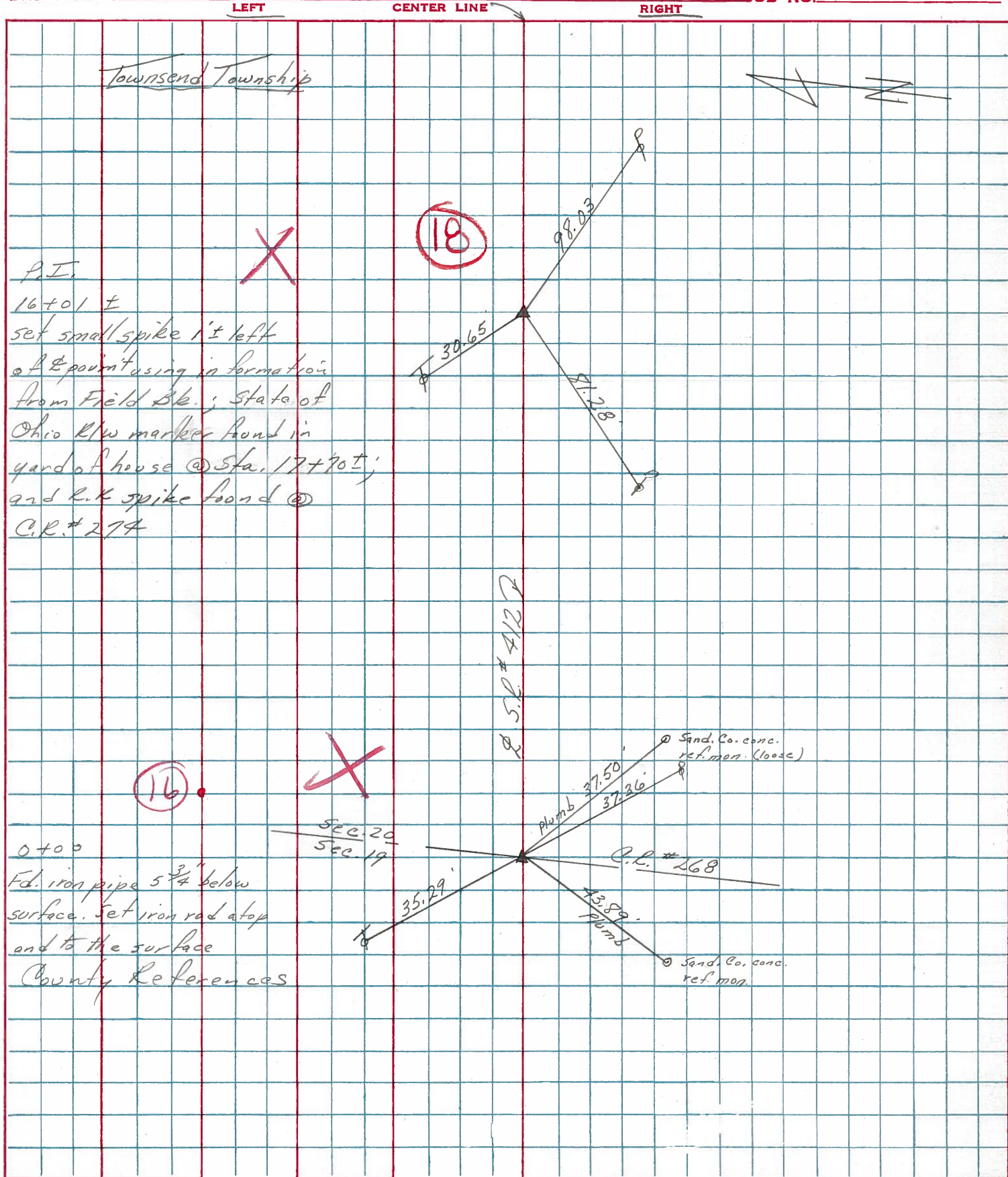
WEATHER sunny

SEC. #2 - Field Bk. #53

TEMP. 65°

DESCRIPTION Ties for Control Points

JOB NO.



Townsend Township



18



P.I.
 16+01 ±
 set small spike in left
 of E point using information
 from Field Bk.; State of
 Ohio R/W marker found in
 yard of a house @ Sta. 17+90 ±;
 and L.L. spike found @
 C.R. #274

16



0+00
 Fd. iron pipe 5 3/4" below
 surface. Set iron rod at top
 and to the surface
 County References

S.R. #412

SEC. 20
SEC. 19

Sand. Co. conc. ref. mon. (loose)

C.R. #268

Sand. Co. conc. ref. mon.