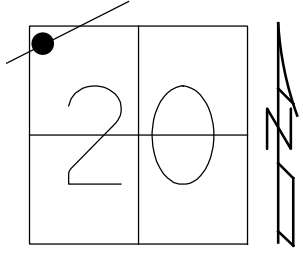


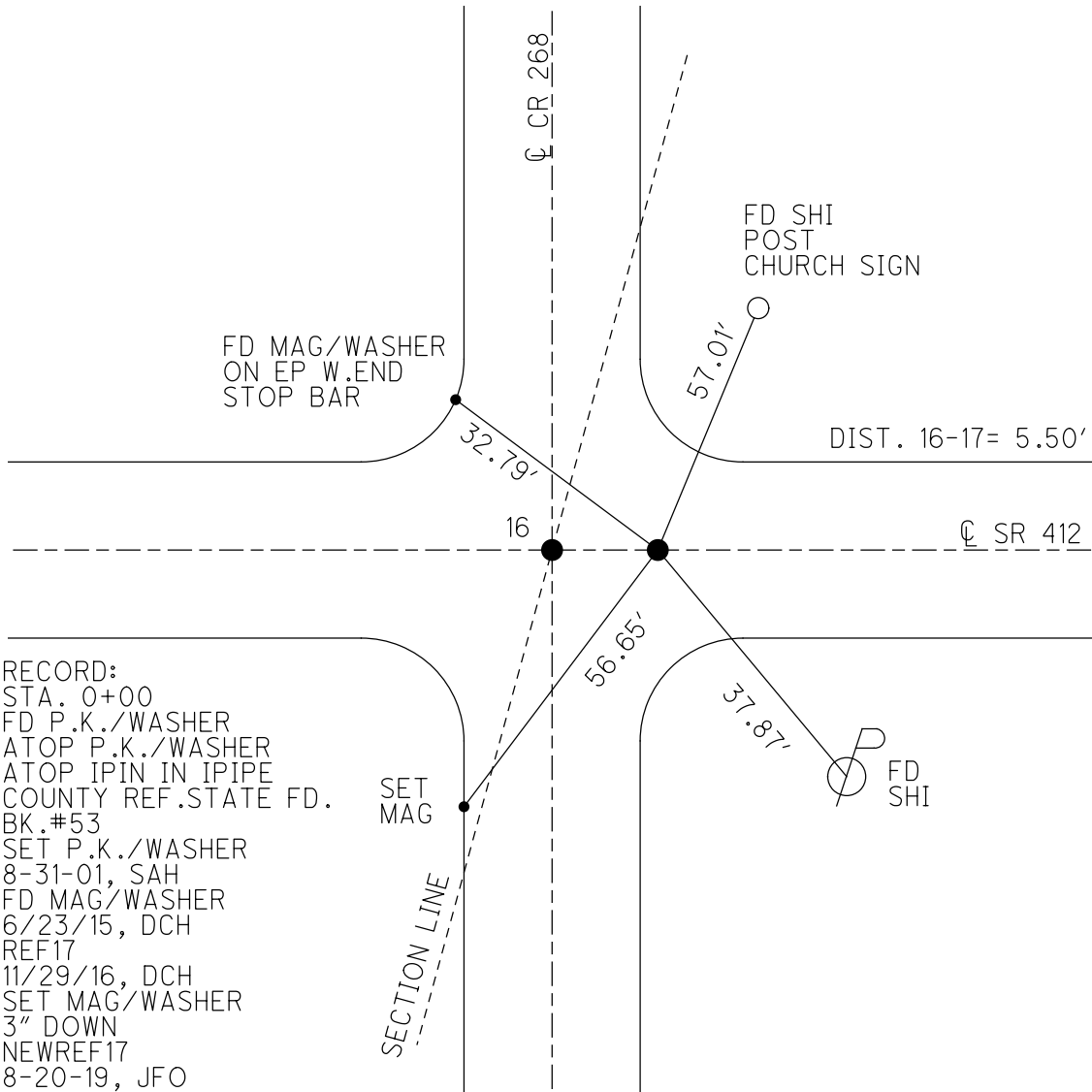
O.D.O.T. DISTRICT 2 SURVEY OFFICE (USE ONLY)

PERSONNEL _____ REFERENCE NO. 17 SHEET 11 OF 32
 NOTES LEU DATE 6/23/15 ROUTE SR 412
 H.C. LEU WEATHER SUNNY COUNTY SANDUSKY
 R.C. HOMAN TEMP. 80° TOWNSHIP TOWNSEND
 SECTION 20
 DWG BY NIESE PID 95765 T 5 N R 17 E

TYPE MONUMENT MAG/WASHER
 ON SURFACE - ~~BELOW~~ ON
 OFFSET Q PAVEMENT ON LT : RT
- TO - EDGE PAVEMENT
 STATION: 405+54.21



HORZ.DATUM: NAD83(2011) GEOID: 2012A
 GRID: NORTHING: 621867.721 EASTING: 1848965.611



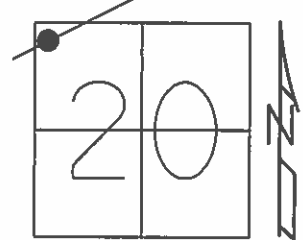
RECORD:
 STA. 0+00
 FD P.K./WASHER
 ATOP P.K./WASHER
 ATOP IPIN IN IPIPE
 COUNTY REF.STATE FD.
 BK.#53
 SET P.K./WASHER
 8-31-01, SAH
 FD MAG/WASHER
 6/23/15, DCH
 REF17
 11/29/16, DCH
 SET MAG/WASHER
 3" DOWN
 NEWREF17
 8-20-19, JFO

SECTION LINE

O.D.O.T. DISTRICT 2 SURVEY OFFICE (USE ONLY)

PERSONNEL _____ REFERENCE NO. 17 SHEET 11 OF 34
 NOTES LEU DATE 06-23-2015 ROUTE SR 412
 H.C. LEU WEATHER SUNNY COUNTY SANDUSKY
 R.C. HOMAN TEMP. 80°F TOWNSHIP TOWNSEND
 _____ SECTION 20
 _____ T 5 N R 17 E

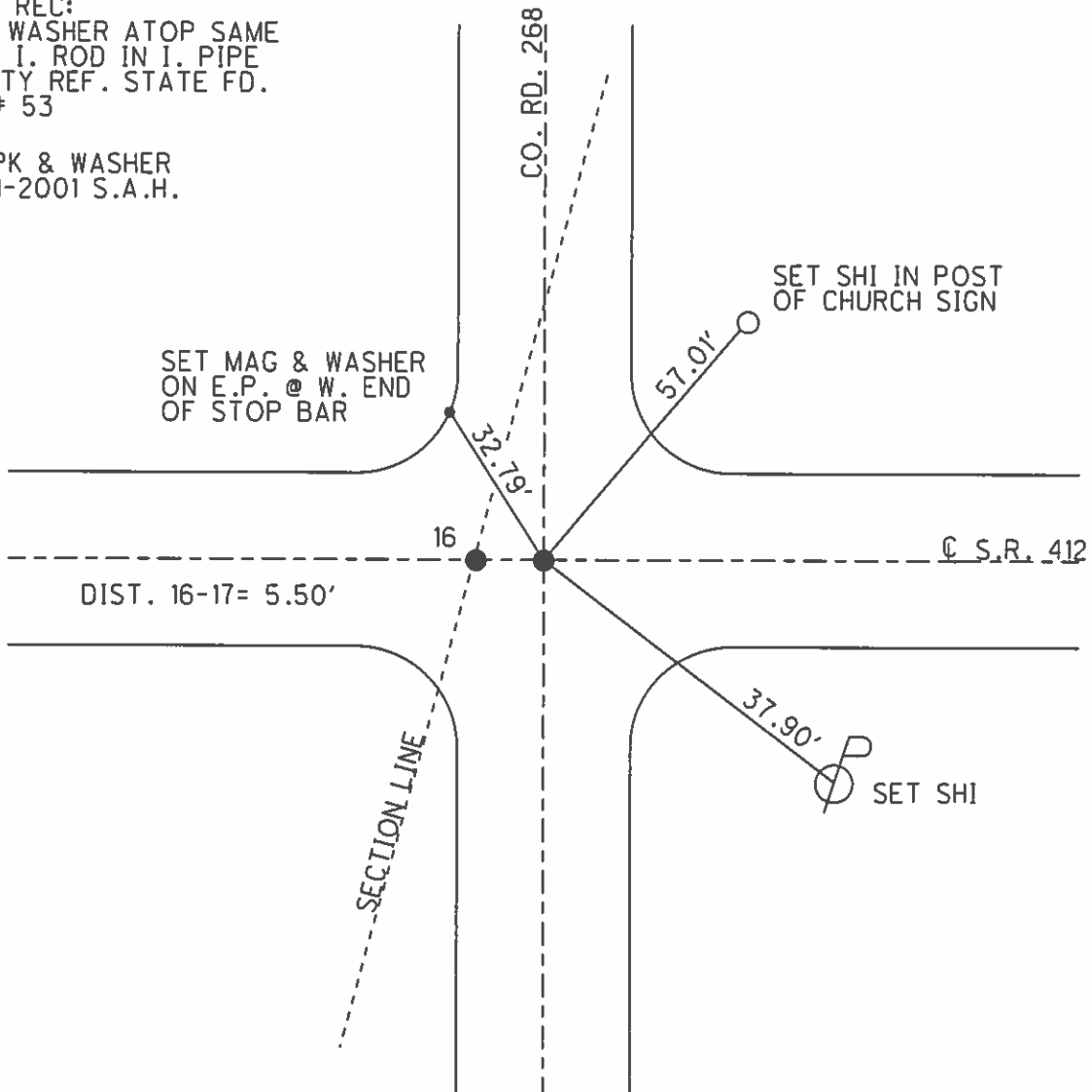
TYPE MONUMENT MAG & WASHER
 ON SURFACE - ~~BELOW~~ ON _____
~~LEFT~~ - ☉ PAV'T - ~~RIGHT~~ ON _____
 _____ TO _____ EDGE PAVEMENT
 S.L.M. 406+45.50



Grid: Northing: 621867.760 Easting: 1848965.626

0+00 REC:
 PK & WASHER ATOP SAME
 ATOP I. ROD IN I. PIPE
 COUNTY REF. STATE FD.
 BK. # 53

SET PK & WASHER
 08-31-2001 S.A.H.



O.D.O.T. DISTRICT 2 SURVEY OFFICE

PERSONNEL

REFERENCE NO. 16

SHEET 9 OF 11

NOTES TED ROUSOS

H.C. B. VAN DUSEN

DATE 7-05-01

ROUTE 412

R.C. A. BROWN

WEATHER SUNNY

COUNTY SANDUSKY

TEMP. + 75° F

TOWNSHIP TOWNSEND

SECTION 20

T. 5 N. R. 17 E

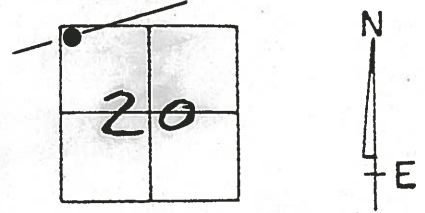
TYPE MONUMENT PK & WASHER

ON SURFACE - ~~BELOW~~ YES

LEFT - & PAV'T. - RIGHT

TO EDGE PAVEMENT

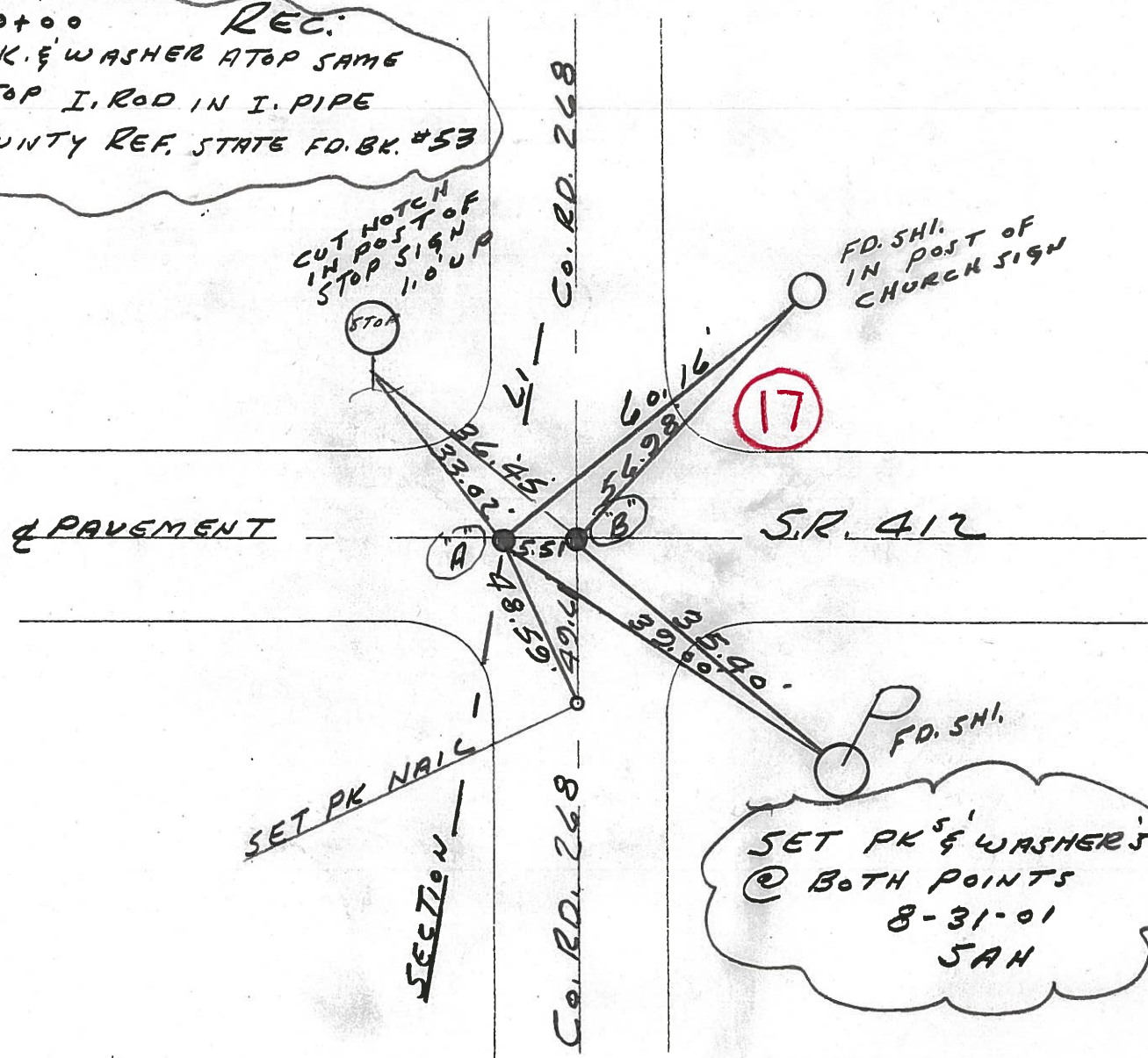
S.L.M. PT. A = 406+90 PT. B = 406+45.51



0+00 REC:
P.K. & WASHER ATOP SAME
ATOP I. ROD IN I. PIPE
COUNTY REF. STATE FD. BK. #53

CUT NOTCH
IN POST OF
STOP SIGN
11.0' UP

FD. SHI.
IN POST OF
CHURCH SIGN



SET PK & WASHER'S
@ BOTH POINTS
8-31-01
JAH