

O.D.O.T. DISTRICT 2 SURVEY OFFICE (USE ONLY)

PERSONNEL

REFERENCE NO. 18

SHEET 12 OF 32

NOTES AUBLE

DATE 5/1/18

ROUTE SR 412

H.C. LEU

WEATHER SUNNY, BREEZY

COUNTY SANDUSKY

R.C. AUBLE

TEMP. 75°

TOWNSHIP TOWNSEND

DWG BY NIESE

PID 95765

SECTION 20

T 5 N R 17 E

TYPE MONUMENT P.K.NAIL

ON SURFACE - ~~BELOW~~ ON

OFFSET  $\text{C}$  PAVEMENT 1.0' LT : RT  
9.3' TO RT EDGE PAVEMENT

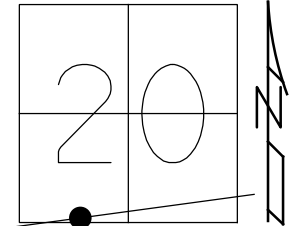
STATION: 421+49.60

HORZ.DATUM: NAD83(2011)

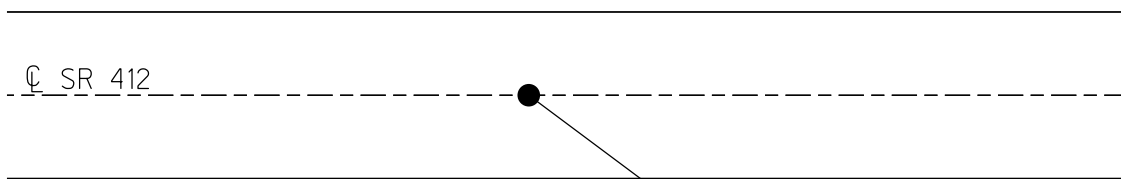
GEOID: 2012A

GRID: NORTHING: 622075.069

EASTING: 1850547.488



RECORD:  
STA.16+01±  
FD P.K./WASHER  
ATOP P.K./WASHER  
ATOP BOAT SPIKE  
FIELD BOOK #53  
SET P.K./WASHER  
8-31-01, SAH  
FD P.K.NAIL  
6/23/15, DCH  
REF18  
11/29/16, DCH  
SET MAG/WASHER  
8-21-19, JFO



┌ SIGN  
MP 8

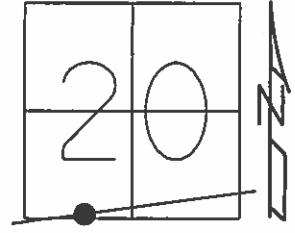
P  
FD  
SHI

RES# 5267

O.D.O.T. DISTRICT 2 SURVEY OFFICE (USE ONLY)

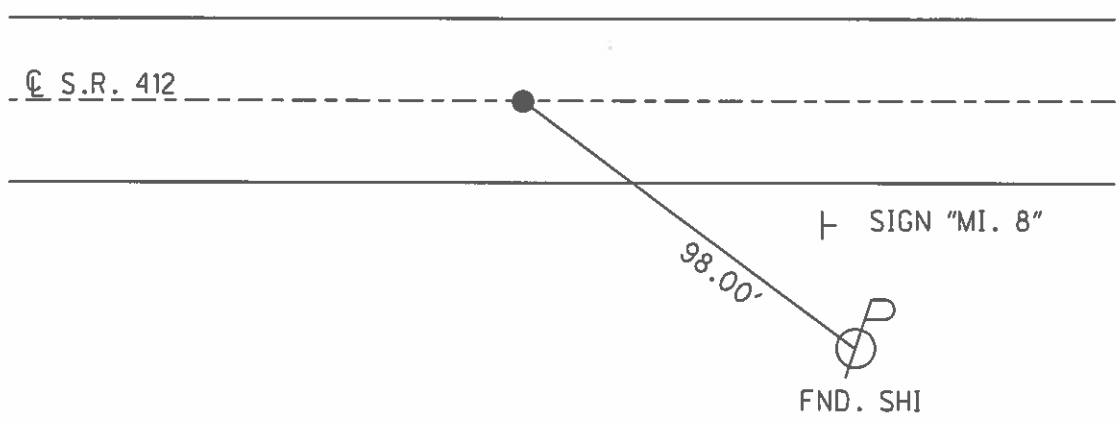
PERSONNEL \_\_\_\_\_ REFERENCE NO. 18 SHEET 12 OF 34  
NOTES LEU DATE 06-23-2015 ROUTE SR 412  
H.C. LEU WEATHER SUNNY COUNTY SANDUSKY  
R.C. HOMAN TEMP. 80°F TOWNSHIP TOWNSEND  
SECTION 20  
T 5 N R 17 E

TYPE MONUMENT PK  
ON SURFACE - ~~BELOW~~ ON  
~~LEFT~~ - C PAV'T - ~~RIGHT~~ ON  
9.3' TO RT EDGE PAVEMENT  
S.L.M. 422+50



Grid: Northing: 622075.069 Easting: 1850547.488

16+01± REC:  
PK & WASHER ATOP SAME  
ATOP BOAT SPIKE  
FIELD BOOK #53  
  
SET PK & WASHER  
08-31-2001 S.A.H.



RES# 5267

O.D.O.T. DISTRICT 2 SURVEY OFFICE

PERSONNEL

REFERENCE NO. ~~X~~ (18) SHEET 10 OF 11

NOTES T. Rousos

H.C. B. VAN DUSEN

R.C. A. BROWN

DATE 7-05-01

WEATHER JUNNY

TEMP. +75° F

ROUTE 412

COUNTY SANDUSKY

TOWNSHIP TOWNSEND

SECTION 20

T.5 N R.12 E

TYPE MONUMENT PK&WASHER

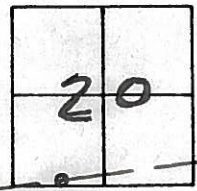
ON SURFACE - BELOW YES

~~LEFT~~ - PAV'T. - RIGHT YES

9.3 TORT. EDGE PAVEMENT

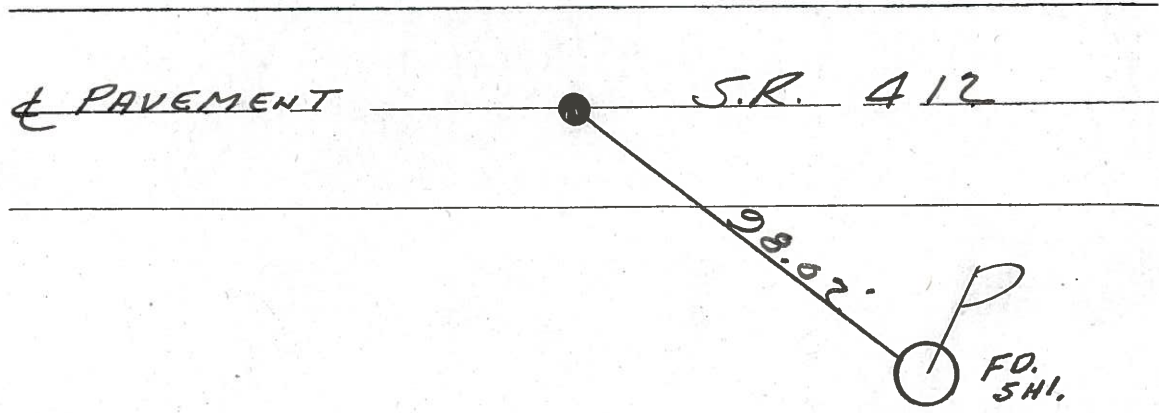
S.L.M. 422+50

(18)



16 ± REC;  
PK&WASHER ATOP.  
SAME ATOP BOAT SPIKE  
FIELD BOOK # 53

SET PK&WASHER  
8-31-01  
S.A.H.



O.D.O.T. DISTRICT 2 SURVEY OFFICE

PERSONNEL

REFERENCE NO. \_\_\_\_\_

SHEET \_\_\_\_\_ OF \_\_\_\_\_

NOTES CROWN (DRAW)

DRAWN 3/08/89

H.C. RIPPLE

DATE 11/01/89

ROUTE # 412

R.C. BARBOUR

WEATHER SUNNY-WINDY

COUNTY SANDUSKY

GEYMAN

TEMP. 53°

TOWNSHIP TOWNSEND

SECTION 20

T 5 N R 17 E

TYPE MONUMENT P.K. & WASHER

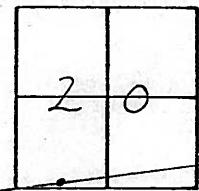
ON SURFACE - BELOW \_\_\_\_\_

LEFT - & PAV'T. - RIGHT 1

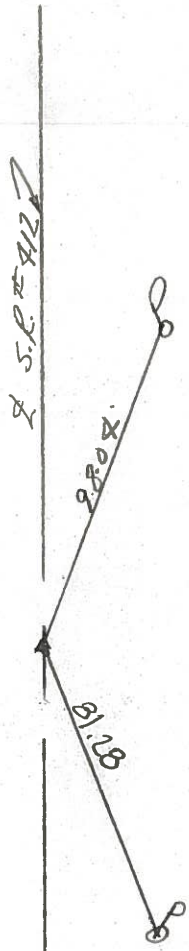
TO \_\_\_\_\_ EDGE PAVEMENT

S.L.M. \_\_\_\_\_ 16+01±

(18)



16+01±  
P.K. & WASHER ATOP SAME  
ATOP BOAT SPIKE  
FIELD BOOK #53



County SANDUSKY S.R. 412

Date 7/14/81 DRAWN 8/4/81

Township TOWNSEND

Weather sunny

Section 20

Temp. 70°

T5N, R12E

Personnel CRONIN

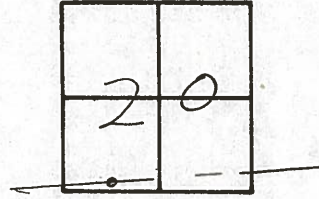
RIPPLE

GEYMAN

MOSSER

BARBOUR

18



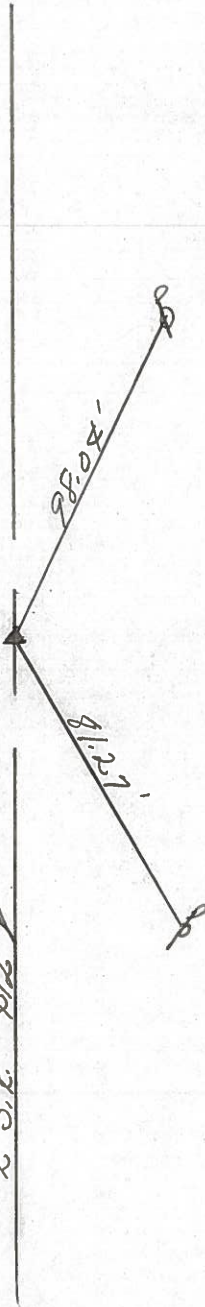
P.I

16401±

Reset P.K. & Washer atop  
bolt spike (1" below surface)

Ref. Field Book # 53

S.R. # 412



PERSONNEL TITLE PERSONNEL TITLE

COUNTY Sandusky

Tied 4/29/75  
DATE Drawn 2/3/75

Cronin

Ash

Ripple

Geyman

S. R. # 412

WEATHER sunny

SEC. # 2 - Field Bl. # 53

TEMP. 65°

DESCRIPTION Ties for Control Points

JOB NO.

LEFT

CENTER LINE

RIGHT

Townsend Township



P.I.

16+01 ±

set small spike 1 ft left

of P point using information

from Field Bl.; State of

Ohio R/W marker found in

yard of house @ Sta. 17+70 ±;

and L.L. spike found @

C.R. # 274

18



30.65

28.03

41.78

16



0+00

Fd. iron pipe 5 3/4" below

surface. Set iron rod atop

and to the surface

County References

SEC. 20  
SEC. 19

S.R. # 412

35.29

37.50

37.36

C.R. # 268

43.89

Sand. Co. conc. ref. mon. (house)

Sand. Co. conc. ref. mon.