

O.D.O.T. DISTRICT 2 SURVEY OFFICE (USE ONLY)

PERSONNEL _____

REFERENCE NO. 19

SHEET 13 OF 32

NOTES AUBLE

DATE 5/1/18

ROUTE SR 412

H.C. LEU

WEATHER SUNNY, BREEZY

COUNTY SANDUSKY

R.C. AUBLE

TEMP. 75°

TOWNSHIP TOWNSEND

SECTION 20

DWG BY NIESE

PID 95765

T 5 N R 17 E

TYPE MONUMENT R.R. SPIKE

~~ON SURFACE~~ - BELOW 9.5"

OFFSET C PAVEMENT 0.4' RT : RT

9.8' TO LT EDGE PAVEMENT

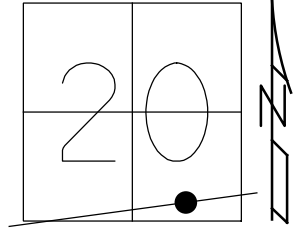
STATION: 445+77.31

HORZ.DATUM: NAD83(2011)

GEOID: 2012A

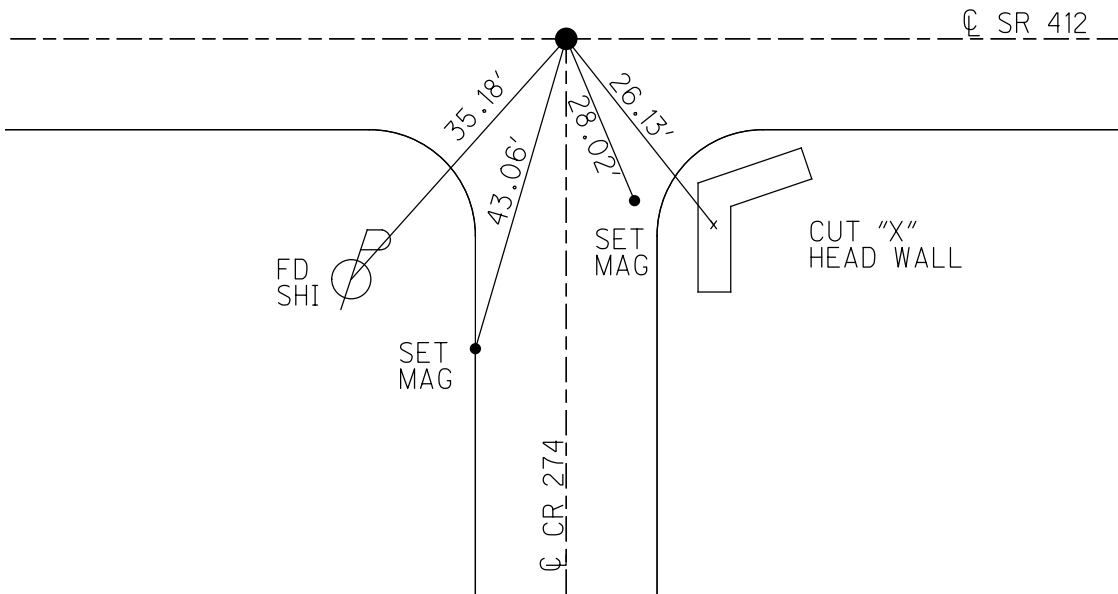
GRID: NORTHING: 622361.306

EASTING: 1852958.335



RECORD:

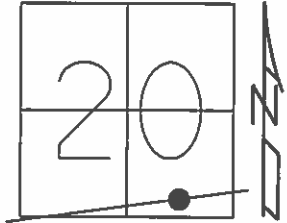
STA. 40+22.60±
 FD P.K./WASHER
 ATOP R.R. SPIKE
 CO.FD.BK.R-232, PG.12
 SET P.K./WASHER
 8-31-01, SAH
 FD R.R.SPIKE
 9.5" DOWN
 6/24/15, DCH
 REF19
 11/29/16, DCH
 SET MAG/WASHER
 NEWREF19
 8-20-2019, JFO



O.D.O.T. DISTRICT 2 SURVEY OFFICE (USE ONLY)

PERSONNEL _____ REFERENCE NO. 19 SHEET 13 OF 34
 NOTES LEU DATE 06-24-2015 ROUTE SR 412
 H.C. LEU WEATHER SUNNY COUNTY SANDUSKY
 R.C. HOMAN TEMP. 66°F TOWNSHIP TOWNSEND
 _____ SECTION 20
 _____ T 5 N R 17 E

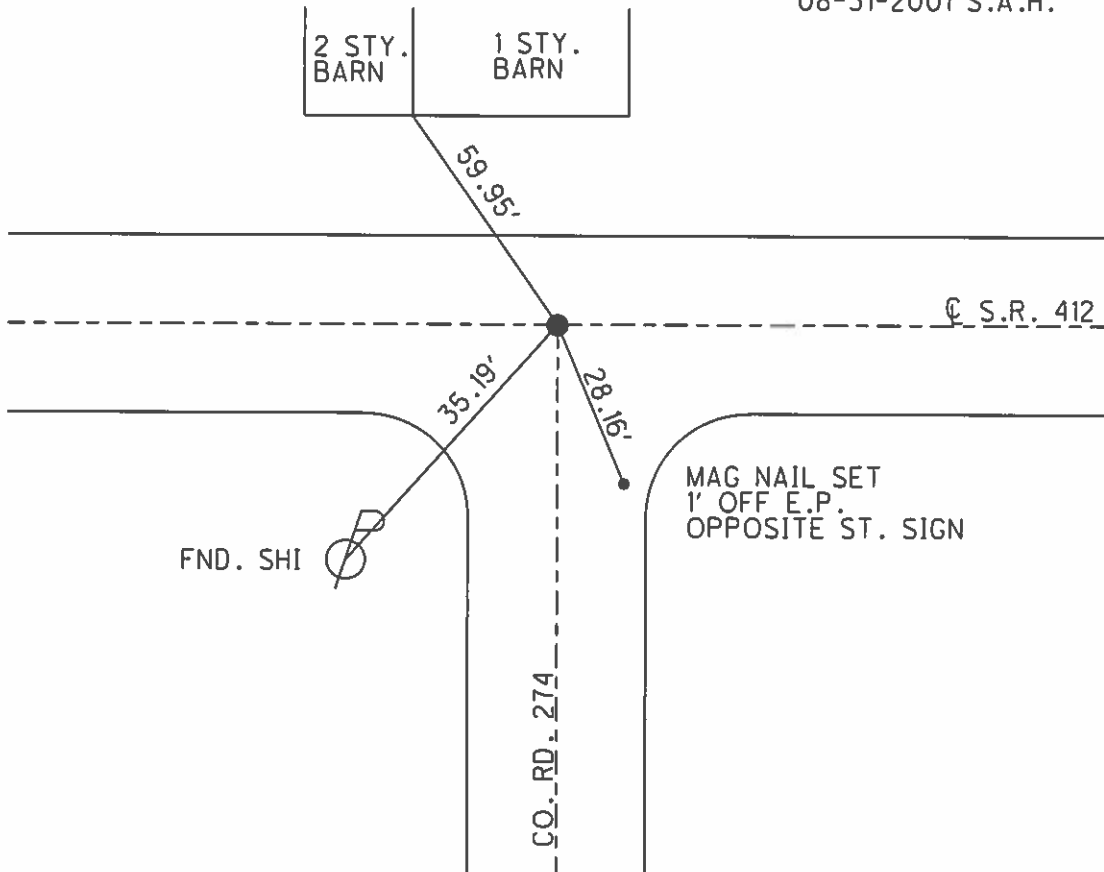
TYPE MONUMENT R.R. SPIKE
~~ON SURFACE~~ - BELOW 9.5"
~~LEFT~~ - CL PAV'T - RIGHT 0.4'
9.8' TO LT EDGE PAVEMENT
 S.L.M. 446+92



Grid: Northing: 622361.340 Easting: 1852958.264

CORNER OF BLOCK
 FOUNDATION @ BOTTOM
 OF SIDING FOR 1 STY. BARN

40+22.60± REC:
 PK & WASHER ATOP
 R.R. SPIKE
 CO. FD. BK. R-232, PG. 12
 SET PK & WASHER
 08-31-2001 S.A.H.



FND. SHI

MAG NAIL SET
 1' OFF E.P.
 OPPOSITE ST. SIGN

O.D.O.T. DISTRICT 2 SURVEY OFFICE

PERSONNEL

REFERENCE NO. 19

SHEET 11 OF 11

NOTES T. ROUSO

H.C. B. VAN DUSEN

DATE 7-05-01

ROUTE 412

R.C. A. BROWN

WEATHER SUNNY

COUNTY SANDUSKY

TEMP. +75°F

TOWNSHIP TOWNSEND

SECTION 20

T5 NR 12 E

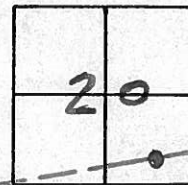
TYPE MONUMENT PK & WASHER

ON SURFACE - BELOW YES

LEFT- & PAV'T. - RIGHT

2.8 TOLT. EDGE PAVEMENT

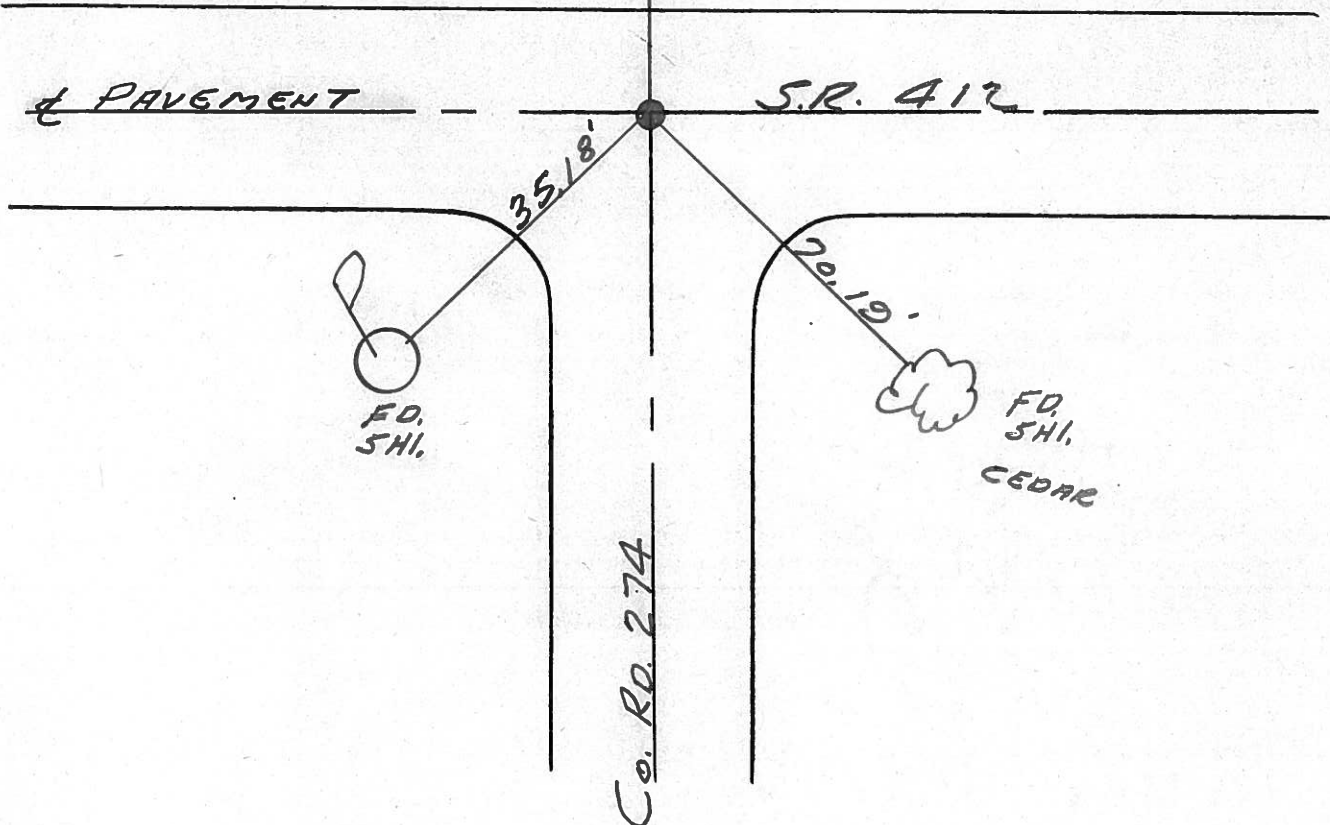
S.L.M. 446 + 92



40+22.60± *REC!*
PK & WASHER ATOP
R.R. SPIKE
Co. FD. BK. R-232, PG. 12

SET SHI.
IN S/S
18" ASH

SET PK/WASHER
8-31-01
SAH



O.D.O.T. DISTRICT 2 SURVEY OFFICE

(2)

PERSONNEL

NOTES Cronin (Draw)

H.C. RIPPLE

R.C. BARBOUR

GEYMAN

REFERENCE NO. ~~XXXX~~

DRAWN 3/08/89

DATE 11/01/89

WEATHER SUNNY - WINDY

TEMP. 53°

SHEET _____ OF _____

ROUTE # 412

COUNTY SANDUSKY

TOWNSHIP TOWNSEND

SECTION 20

T 5 N R 17 E

TYPE MONUMENT P.K. & WASHER

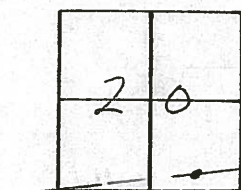
ON SURFACE - BELOW _____

LEFT - C PAV'T. - RIGHT _____

_____ TO _____ EDGE PAVEMENT

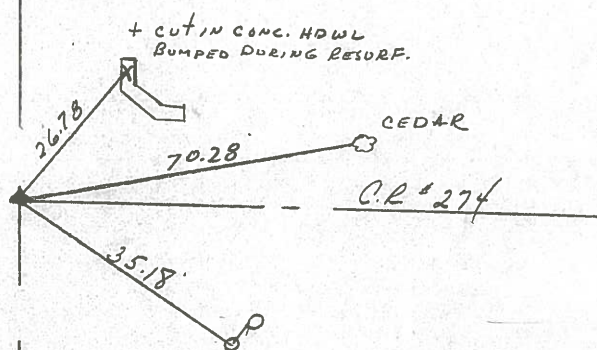
S.L.M. _____ 40+22.60±

19



E.S.R. #412

40+22.60±
P.K. & WASHER AT OP
R.R. SPIKE
Co. Fo. BK R-232, Pg. 12



County SANDUSKY S.R. 412

Date 7/14/81 DRAWN 8/7/81

Township TOWNSEND

Weather SUNNY

Section # 20

Temp. 70°

T5N, R17E

Personnel CRONIN

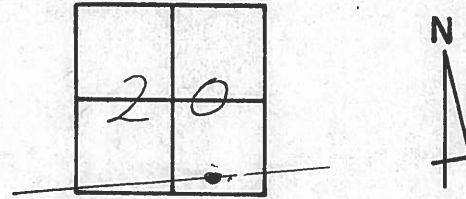
RIPPLE

GEYMAN

MOSSER

BARBOUR

x19

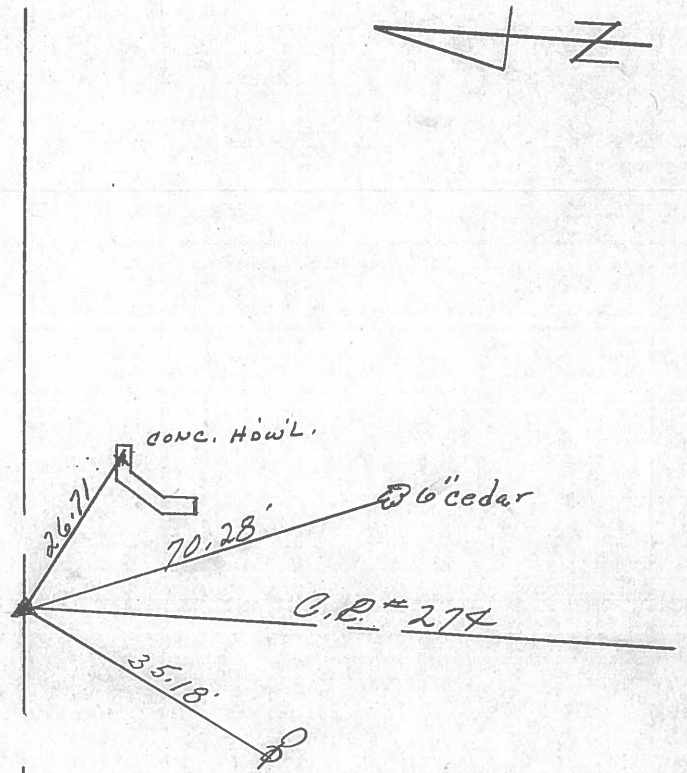


40+22.60 ±

Reset P.K. & Washer at top

R.R. spike (6 1/2" below surface)

Ref. Co. Field Bk. L232, Pg. 12



218 # 215
S.R. # 412

PERSONNEL	TITLE	PERSONNEL	TITLE
Cronin			
Ash			
Ripple			
Geyman			

COUNTY Sandusky

Tied 4/29/75
DATE Drawn 2/3/75

S. R. # 412

WEATHER sunny

SEC. #2 Field Bk #53

TEMP. 65°

DESCRIPTION Ties for Control Points

JOB NO.

