

O.D.O.T. DISTRICT 2 SURVEY OFFICE (USE ONLY)

PERSONNEL _____ REFERENCE NO. 20 SHEET 14 OF 32
 NOTES LEU DATE 5/1/18 ROUTE SR 412
 H.C. LEU WEATHER SUNNY, BREEZY COUNTY SANDUSKY
 R.C. HOMAN TEMP. 75° TOWNSHIP TOWNSEND
 DWG BY NIESE PID 95765 SECTION 20 & 21
 T 5 N R 17 E

TYPE MONUMENT LG. R.R. SPIKE

~~ON SURFACE~~ - BELOW 3"

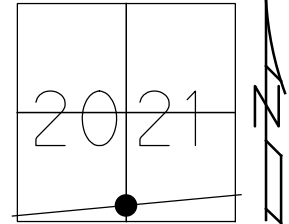
OFFSET \odot PAVEMENT 1.7' LT : ~~RT~~

8.6' TO LT EDGE PAVEMENT

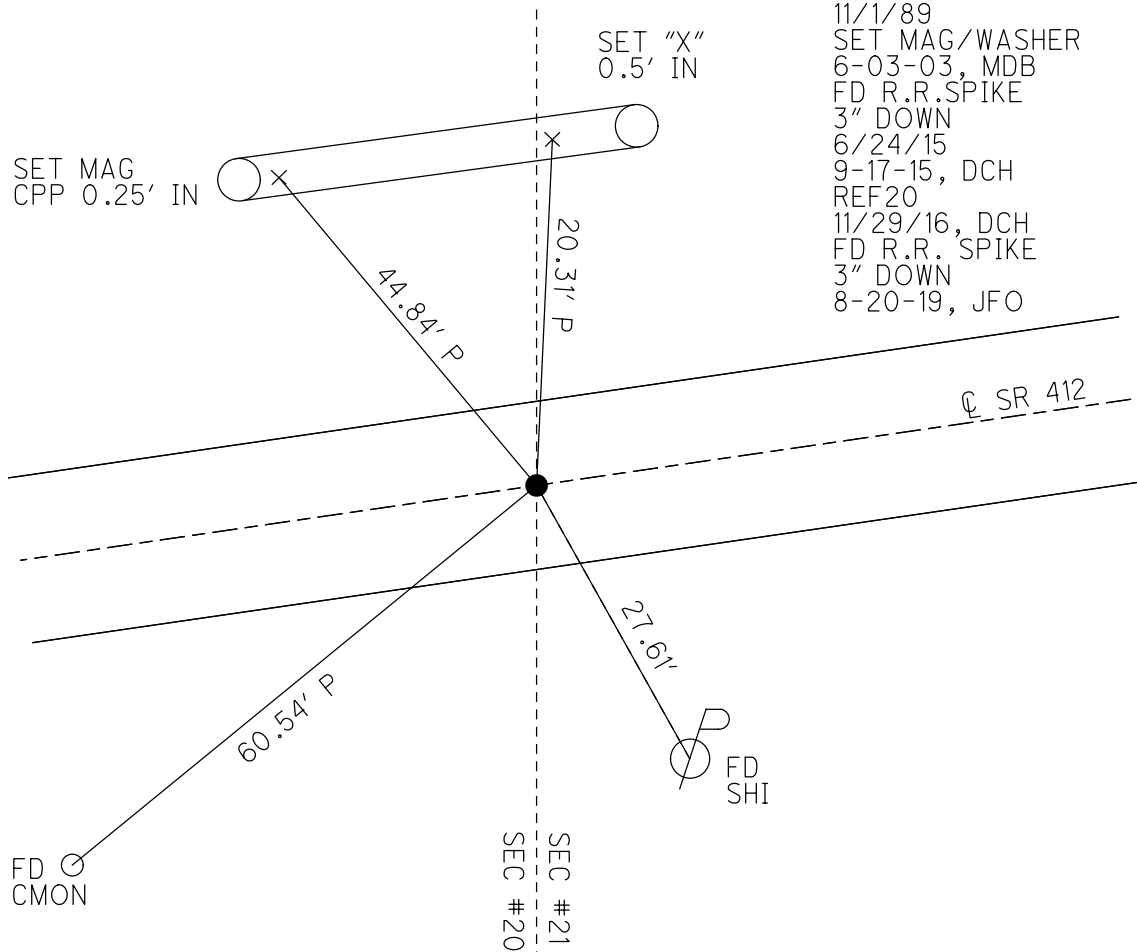
STATION: 458+96.17

HORZ. DATUM: NAD83(2011) GEOID: 2012A

GRID: NORTHING: 622523.984 EASTING: 1854267.057



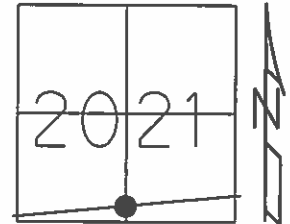
RECORD:
 STA. 53+42+
 FD P.K./WASHER
 ATOP P.K./WASHER
 ATOP R.R. SPIKE
 IN IPIPE
 11/1/89
 SET MAG/WASHER
 6-03-03, MDB
 FD R.R. SPIKE
 3" DOWN
 6/24/15
 9-17-15, DCH
 REF20
 11/29/16, DCH
 FD R.R. SPIKE
 3" DOWN
 8-20-19, JFO



O.D.O.T. DISTRICT 2 SURVEY OFFICE (USE ONLY)

PERSONNEL _____ REFERENCE NO. 20 SHEET 14 OF 34
 NOTES LEU DATE 06-24-2015 ROUTE SR 412
 H.C. LEU WEATHER SUNNY COUNTY SANDUSKY
 R.C. HOMAN TEMP. 66°F TOWNSHIP TOWNSEND
 _____ SECTION 20 & 21
 _____ T 5 N R 17 E

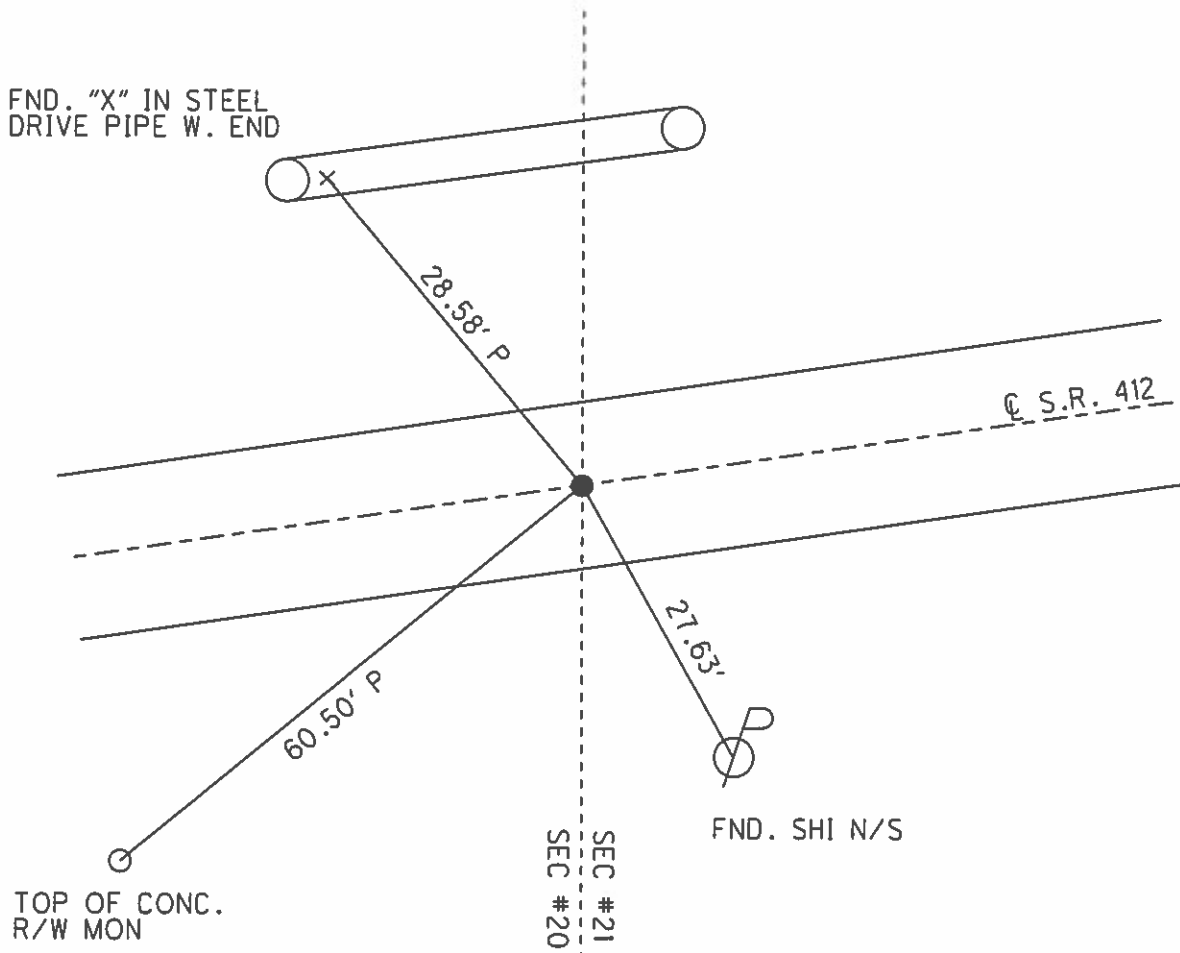
TYPE MONUMENT LG.R.R.SPIKE
~~ON SURFACE~~ - BELOW 3"
 LEFT - ☉ PAV'T - ~~RIGHT~~ 1.7'
8.6' TO LT EDGE PAVEMENT
 S.L.M. 460+46



Grid: Northing: 622523.984 Easting: 1854267.057

REC: 11-01-1989
 STA 53+42±
 PK & WASHER ATOP
 PK & WASHER ATOP
 RR SPK IN IRON PIPE

RESET MAG & WASHER
 06-03-2003 M.D.B.
 UNCOVERED 3" DOWN
 09-17-2015 D.C.H.



O.D.O.T. DISTRICT 2 SURVEY OFFICE

PERSONNEL

REFERENCE NO. 20

SHEET 1 OF 16

NOTES Barnhisel

DATE 4-10-03

ROUTE S.R. 412

H.C. Canterbury

WEATHER Cloudy

COUNTY SANDUSKY

R.C. Brumbaugh

TEMP. +35°

TOWNSHIP TOWNSEND

SECTION 20+21

T 5 N R 17 E

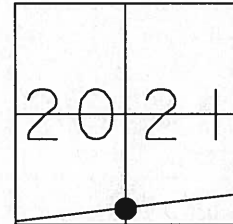
TYPE MONUMENT PK & Washer

ON SURFACE - ~~BELOW~~ on surface

LEFT - Q PAV'T - ~~RIGHT~~ 1.7'

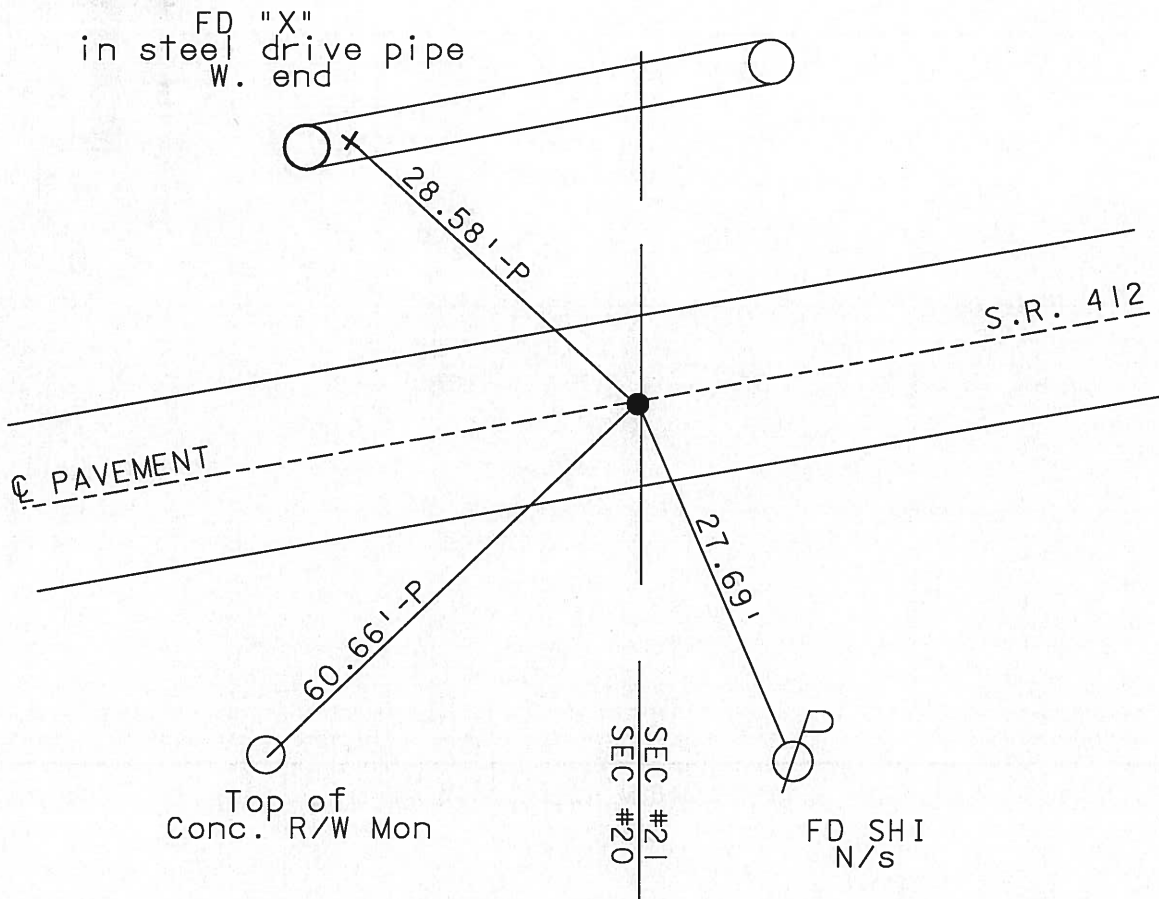
8.6 TO LT EDGE PAVEMENT

S.L.M. 460+46



Records; 11-1-1989
sta 53+42±
PK/washer atop
PK/washer atop
RR. SPK IN IRON PIPE

RESET MAG & WASHER
06/03/03
MDB



Resurfaced 2003

O.D.O.T. DISTRICT 2 SURVEY OFFICE

PERSONNEL

REFERENCE NO. 20

SHEET 1 OF 16

NOTES CHENEY

H.C. RIDDLE

DATE 4-28-1993

ROUTE #412

R.C. BARBOUR

WEATHER SUNNY

COUNTY SANDUSKY

GEYMAN

TEMP. 70°

TOWNSHIP TOWNSEND

SECTION 20 & 21

TSN R 17 E

TYPE MONUMENT PK/WASHER

ON SURFACE - ~~BELOW~~ ON

LEFT - CL PAV'T. - ~~RIGHT~~ 1.5'

7.5' TO LT EDGE PAVEMENT

S.L.M. 460+46



RECORD: 11-1-1989

STA. 53+42±

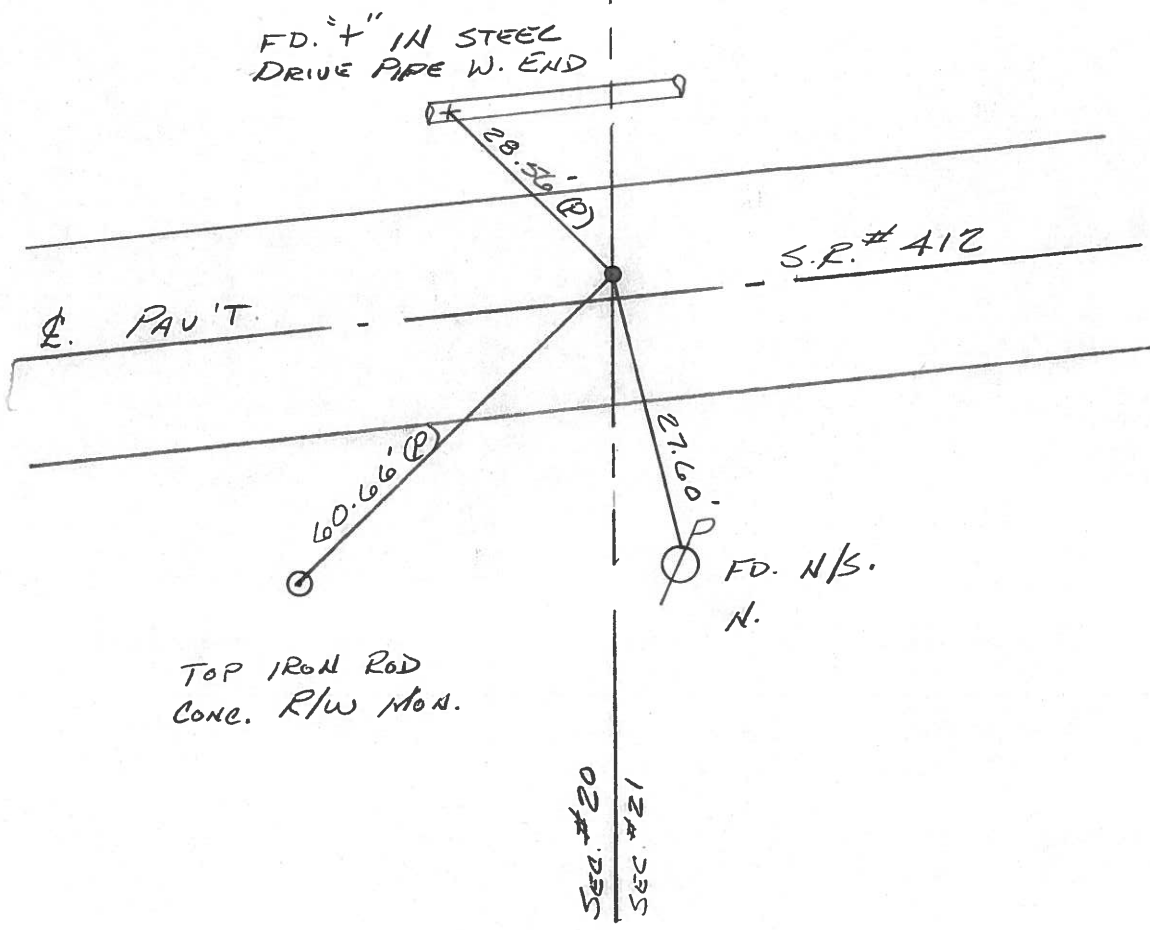
PK/WASHER ATOP

PK/WASHER ATOP

R.R. SPK. IN IRON

PIPE

SET PK/WASHER
7-22-1993
RCC



FD. 1/2" IN STEEL
DRIVE PIPE W. END

28.56' (P)

S.R. #412

CL PAV'T.

60.66' (P)

60.72' (P)

FD. N/S.
N.

TOP IRON ROD
CONC. R/W MON.

SEC. #20
SEC. #21

O.D.O.T. DISTRICT 2 SURVEY OFFICE

13

PERSONNEL

REFERENCE NO. 20

SHEET OF

NOTES CRONIN (DRAW)

DRAWN 3/08/89

H.C. RIPPLE

DATE 11/01/89

R.C. BARBOUR

WEATHER SUNNY-WINDY

GEYMAN

TEMP. 53°

ROUTE # 412

COUNTY SANDUSKY

TOWNSHIP TOWNSEND

SECTION 20 & 21

T 5 N R 17 E

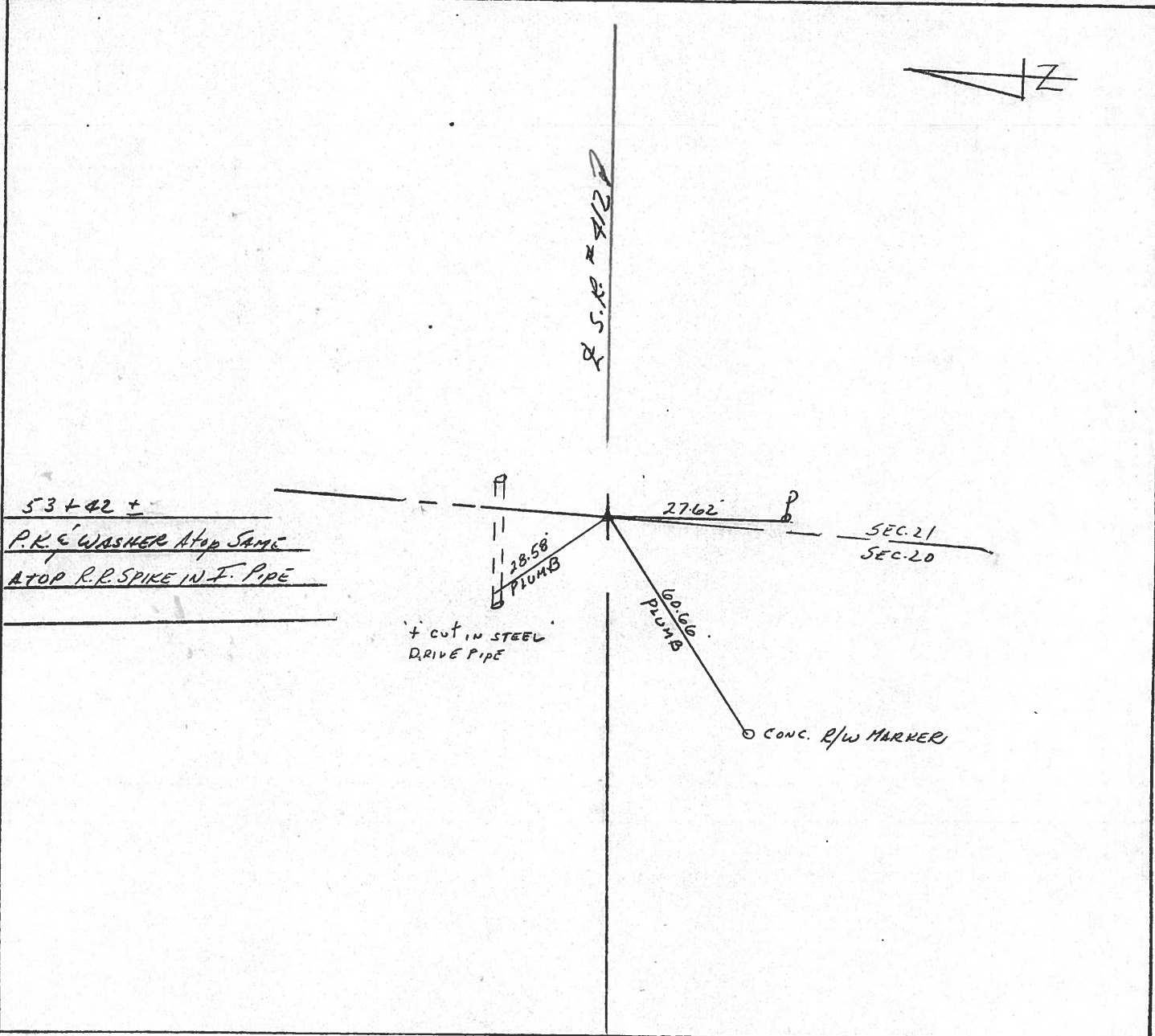
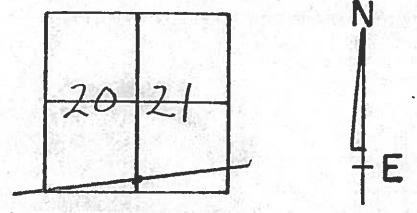
TYPE MONUMENT P.K. & WASHER

ON SURFACE - BELOW

LEFT - & PAV'T. - RIGHT 2'

 TO EDGE PAVEMENT

S.L.M. 53+42F



County Sandusky S.R. 412

Date 9/9/82 - Drawn 9/15/82

Township Townsend

Weather sunny

Section 20 & 21

Temp. 75°

T5N, R1E

Personnel Cronin

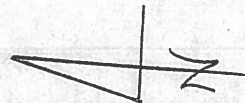
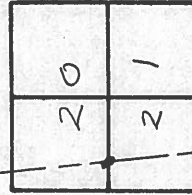
Ripple

Geyman

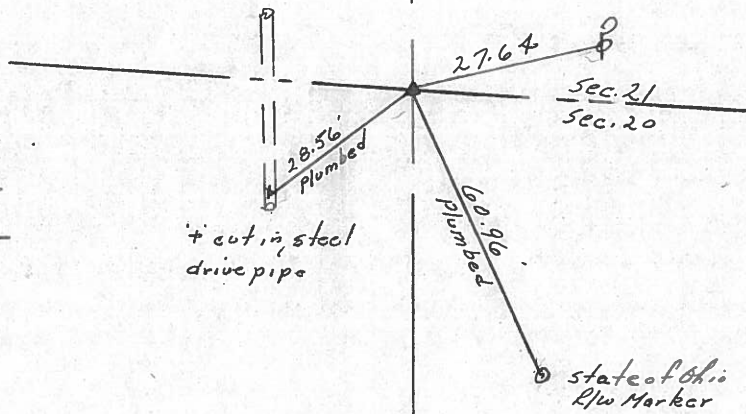
Mosser

Barbour

#20



53+42 ±
 Set P.K. & washer atop
 R.R. spike in iron pipe - 2 ±
 Lt. & pavement



E.P.W. 5R # 412

PERSONNEL TITLE PERSONNEL TITLE

Cronin
Ash
Ripple
Geyman

COUNTY Sandusky

Tied 4/29/75
DATE Drawn 2/3/75

S. R. # 412

WEATHER sunny

SEC. #2 Field Bk #53

TEMP. 65°

DESCRIPTION Ties for Control Points

JOB NO.

LEFT

CENTER LINE

RIGHT

Townsend Township



(20)

53+42 ±

Fd. iron pipe 5 1/2' below surface, 2' ± left of & permit. Set R.R. spike at top 9' to the surface. (x cut in spike)

Sec. 21 -
Sec. 20

27.64

63.84

69.29

CONC. Mon. State R/W Marker

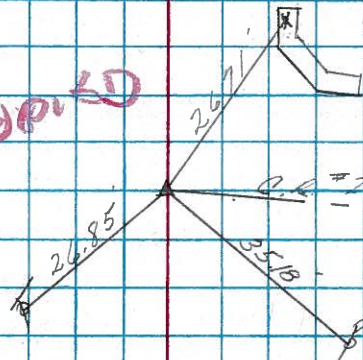
S. R. # 412

(19)

~~COPYED~~

40+22.60 ±

Fd. R.R. spike 5 1/2' below surface. Set small spike & washer at top 9' to the surface - Set R.R. spike (x out) at top, 9' to the surface
County Field Bk. # 232, Pg 12 refers to R.R. spike



Sec. 20