

O.D.O.T. DISTRICT 2 SURVEY OFFICE (USE ONLY)

PERSONNEL	REFERENCE NO.	21 A	SHEET	17	OF	34
NOTES	LEU	DATE	06-24-2015	ROUTE	SR 412	
H.C.	LEU	WEATHER	SUNNY	COUNTY	SANDUSKY	
R.C.	HOMAN	TEMP.	75°F	TOWNSHIP	TOWNSEND	
				SECTION	21	
				T	5	N
				R	17	E

TYPE MONUMENT MAG & WAHSER

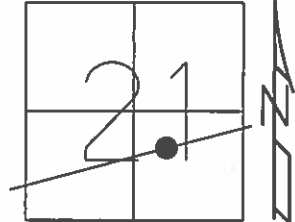
ON SURFACE - ~~BELOW~~ ON

~~LEFT~~ - ℄ PAV'T - RIGHT 0.3'

9.9' TO RT EDGE PAVEMENT

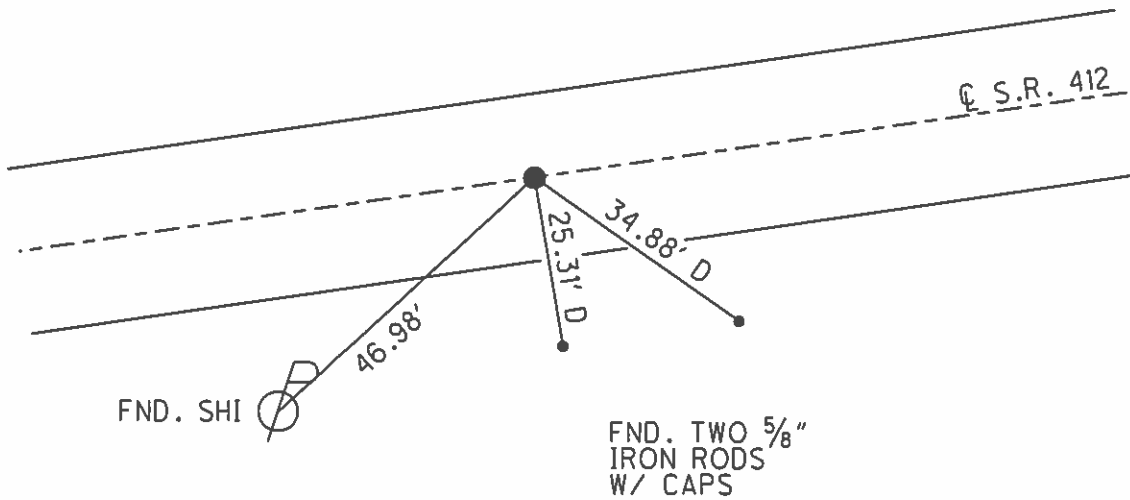
S.L.M. 497+68

Grid: Northing: 622975.242 Easting: 1857954.318



REC: 09-09-1982  
 STA (1219+00)  
 FROM 1964 BRIDGE PLAN

RESET MAG & WASHER  
 06-03-2003 M.D.B.



O.D.O.T. DISTRICT 2 SURVEY OFFICE

PERSONNEL

REFERENCE NO. 21-A

SHEET 2 OF 16

NOTES Barnhisel

DATE 4-10-03

ROUTE S.R. 412

H.C. Canterberry

WEATHER Cloudy

COUNTY SANDUSKY

R.C. Brumbaugh

TEMP. +35°

TOWNSHIP TOWNSEND

SECTION 21

T 5 N R 17 E

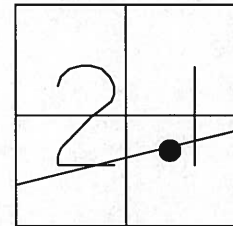
TYPE MONUMENT PK & Washer

ON SURFACE ~~BELOW~~ on surface

~~LEFT~~ - C PAV'T - RIGHT 0.3'

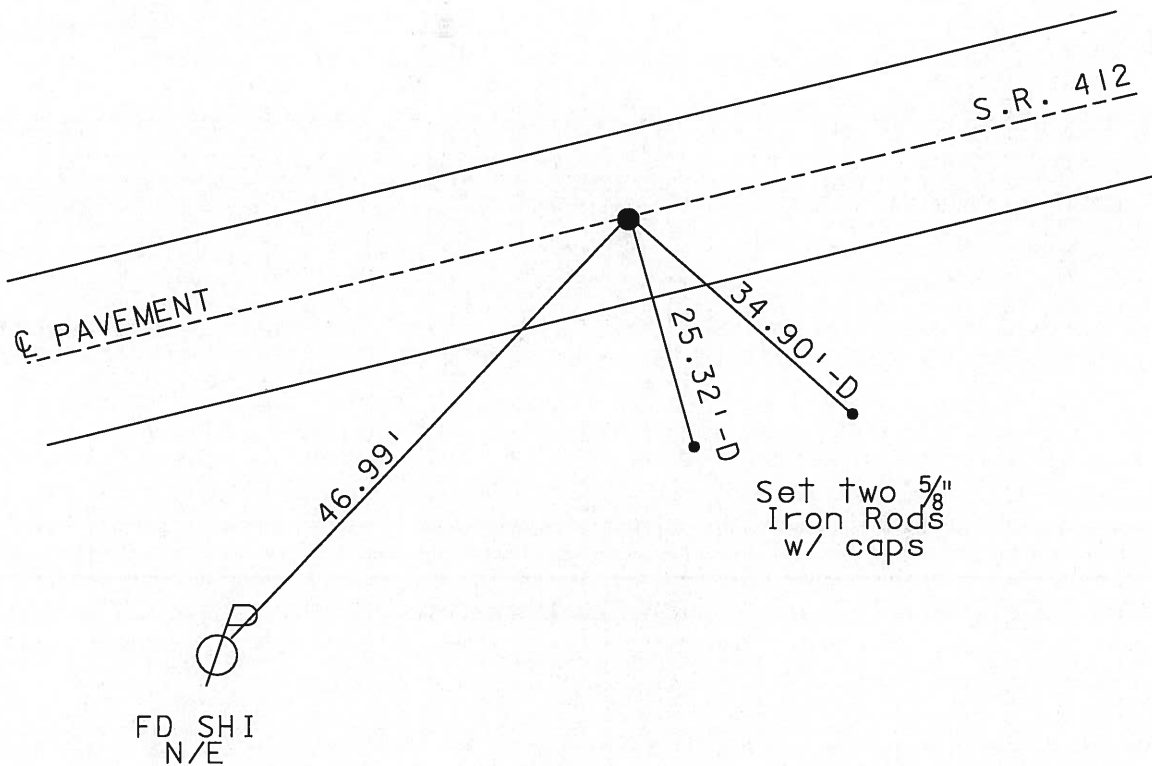
9.9 TO RT EDGE PAVEMENT

S.L.M. 497+68



RECORD: STA (1219+00)  
FROM 1964 BRIDGE PLAN  
→ 9-9-1982

RESET MAG & WASHER  
06/03/03  
MDB



O.D.O.T. DISTRICT 2 SURVEY OFFICE

PERSONNEL

REFERENCE NO. 21-A

SHEET 2 OF 16

NOTES CHENEY

H.C. RIPPLE

DATE 4-28-1993

ROUTE #412

R.C. BARBOUR

WEATHER SUNNY

COUNTY SANDUSKY

GEYMAN

TEMP. 70°

TOWNSHIP TOWNSEND

SECTION 21

T5N R17E

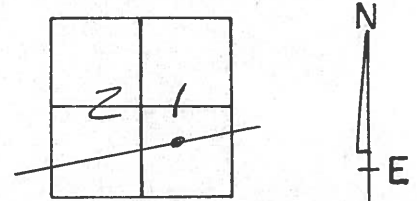
TYPE MONUMENT PK/WASHER

ON SURFACE - ~~BELOW~~ ON

~~LEFT~~ - Q PAV'T. - ~~RIGHT~~ ON

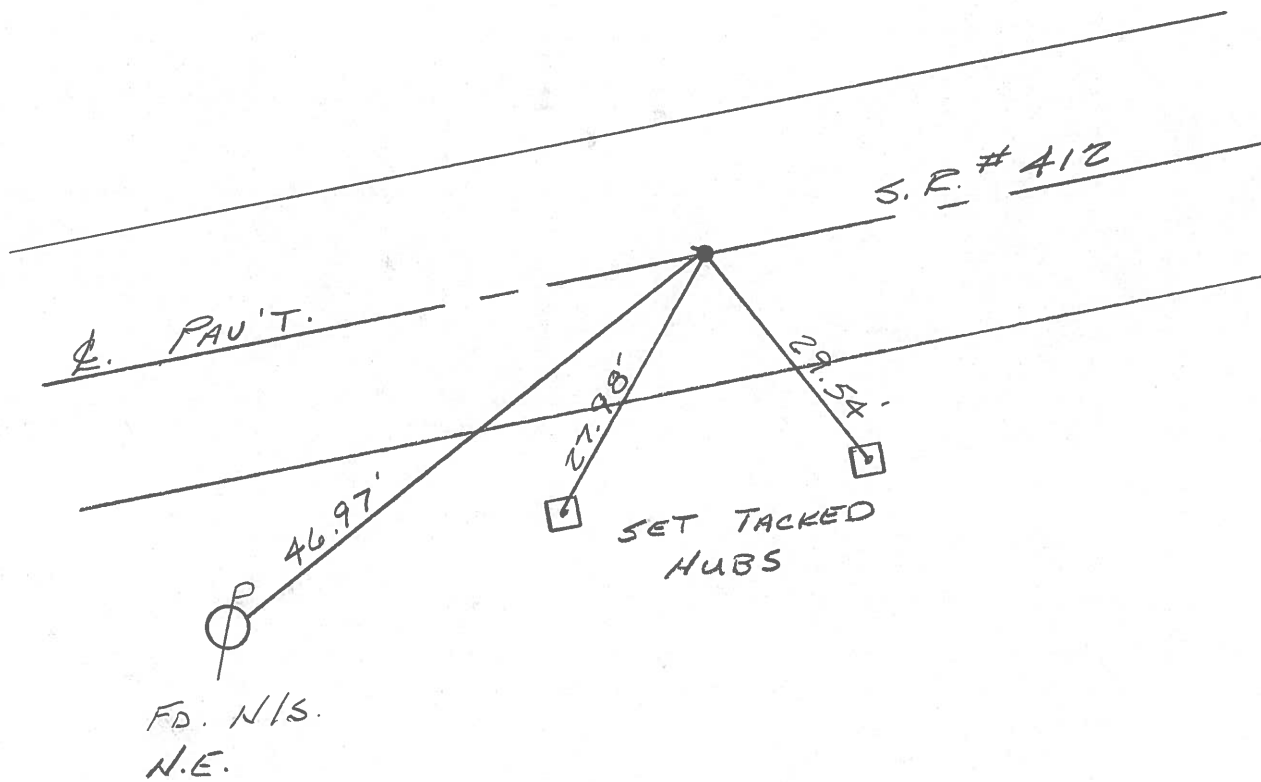
9' TO LT. EDGE PAVEMENT

S.L.M. 497+68



RECORDED: 9-9-1982  
STA. 1219+00  
SET PK/WASHER ATOP  
BOAT SPK. ATOP  
NAIL/SHINER - 1964 BRIDGE  
PLANS

SET PK/WASHER  
 7-22-1993  
 RCC



County Sandusky S.R. 412

Date 9/9/82 Drawn 9/15/82

Township Townsend

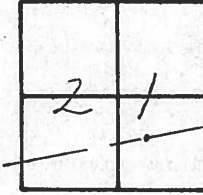
Weather sunny

Section 21

Temp. 75°

T5N, R12E

Personnel Cronin

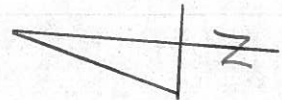
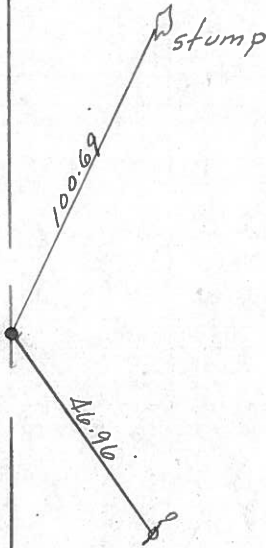


#21-A

Ripple  
Geyman  
Mosser  
Barbour

1219+00

set P.K. & washer atop  
 boat spike atop nail  
 & shiner - 1964 Bridge  
 Plans



R/W ?? S.R. #412

PERSONNEL	TITLE	PERSONNEL	TITLE
Cronin			
Ash			
Lippie			
Geyman			

COUNTY Sandusky

Tied 4/29/75  
DATE Drawn 2/3/75

S. R. # 412

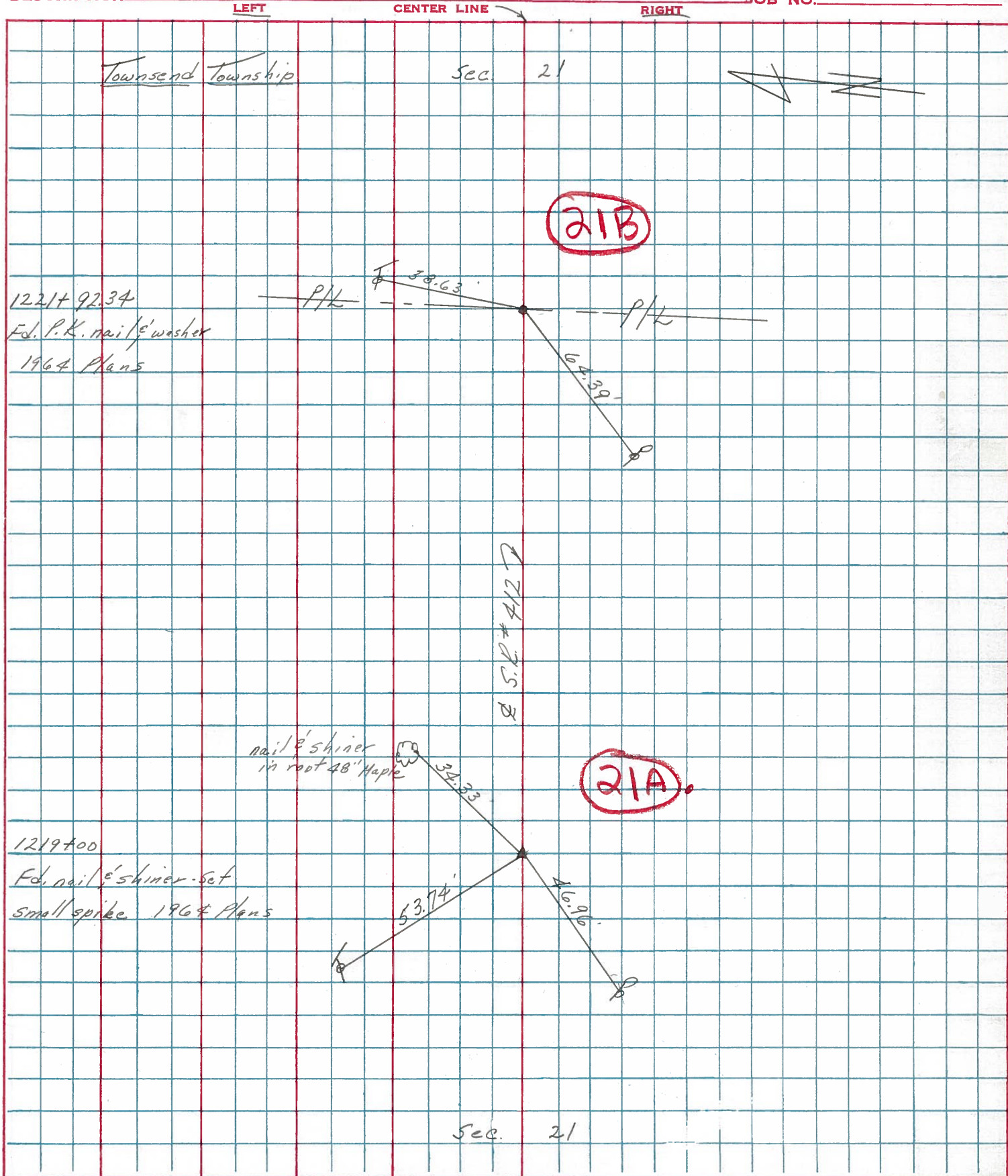
WEATHER sunny

SEC. Sen. 12-23.24

TEMP. 65°

DESCRIPTION Ties for Control Points

JOB NO.



PERSONNEL TITLE PERSONNEL TITLE

Schneider  
Masser  
Barbour  
Potts

COUNTY Sandusky DATE Jan. 1968

S. R. #412 WEATHER

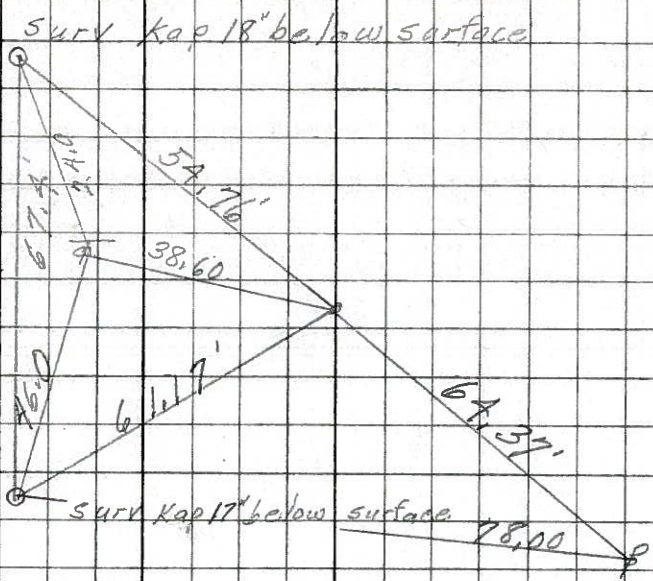
SEC. N.E. of Fremont TEMP.

DESCRIPTION LEFT CENTER LINE RIGHT JOB NO.

(21B)

P/L West Line S.E. 1/2  
Sec- 21  
1221+ 92.34  
P.K. Nail

7219



(21A)

P.O.T.  
1219+ 00  
Begin survey  
Nail & shiner

7218

