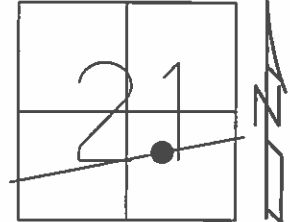


O.D.O.T. DISTRICT 2 SURVEY OFFICE (USE ONLY)

PERSONNEL \_\_\_\_\_ REFERENCE NO. 21 B SHEET 18 OF 34  
 NOTES LEU DATE 06-24-2015 ROUTE SR 412  
 H.C. LEU WEATHER SUNNY COUNTY SANDUSKY  
 R.C. HOMAN TEMP. 76°F TOWNSHIP TOWNSEND  
 SECTION 21  
 T 5 N R 17 E

TYPE MONUMENT MAG & WASHER  
 ON SURFACE - ~~BELOW~~ ON \_\_\_\_\_  
 LEFT - ☉ PAV'T - ~~RIGHT~~ 0.5'  
9.8' TO LT EDGE PAVEMENT  
 S.L.M. 500+61

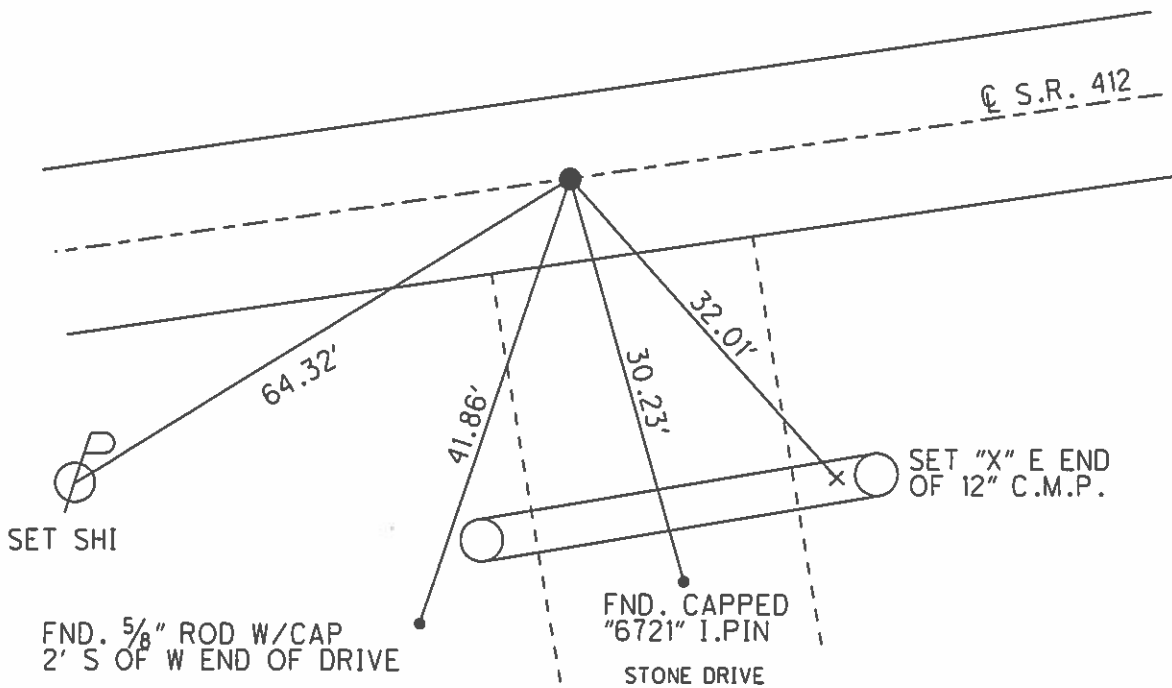


Grid: Northing: 623010.900 Easting: 1858244.483

REC: 09-09-1982  
 STA 1221+92.34  
 BRIDGE PLAN 1964

RESET MAG & WASHER  
 06-03-2003 M.D.B.

UNCOV. MAG  
 09-17-20015 D.C.H.



O.D.O.T. DISTRICT 2 SURVEY OFFICE

PERSONNEL

REFERENCE NO. 21-B

SHEET 3 OF 16

NOTES Barnhisel

DATE 4-10-03

ROUTE S.R. 412

H.C. Canterbury

WEATHER Cloudy

COUNTY SANDUSKY

R.C. Brumbaugh

TEMP. +35°

TOWNSHIP TOWNSEND

SECTION 21

T 5 N R 17 E

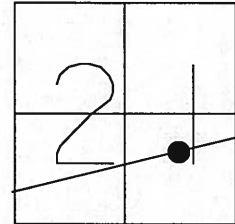
TYPE MONUMENT PK & Washer

ON SURFACE - ~~BELOW~~ YES

LEFT - Q PAV'T - ~~RIGHT~~ 0.5'

9.8 TO LT EDGE PAVEMENT

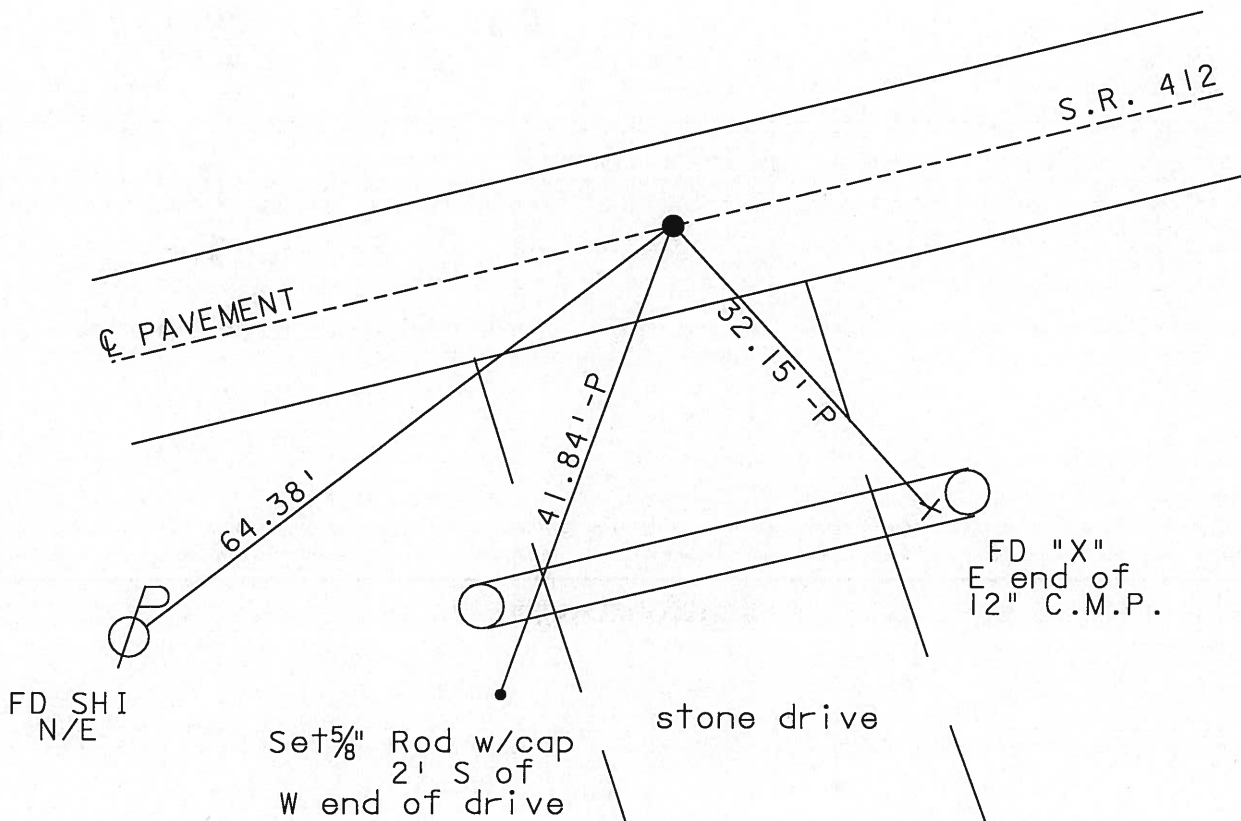
S.L.M. 500+61



RECORD: STA (1221+92.34)  
BRIDGE PLAN 1964

RESET MAG & WASHER  
06/03/03  
MDB

9-5-1982



O.D.O.T. DISTRICT 2 SURVEY OFFICE

PERSONNEL

REFERENCE NO. 21-13 SHEET 3 OF 16

NOTES CHENEY

H.C. RIPPLE

DATE 4-28-1993

ROUTE #412

R.C. BARBOUR

WEATHER SUNNY

COUNTY SANDUSKY

GEYMAN

TEMP. 70°

TOWNSHIP TOWNSEND

SECTION 21

T S N R I T E

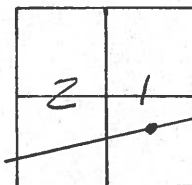
TYPE MONUMENT PK/WASHER

~~ON~~ SURFACE - BELOW 2"±

~~LEFT - & PAV'T. - RIGHT~~ ON

9' TO LT. EDGE PAVEMENT

S.L.M. 500+61



RECORD: 9-9-1982

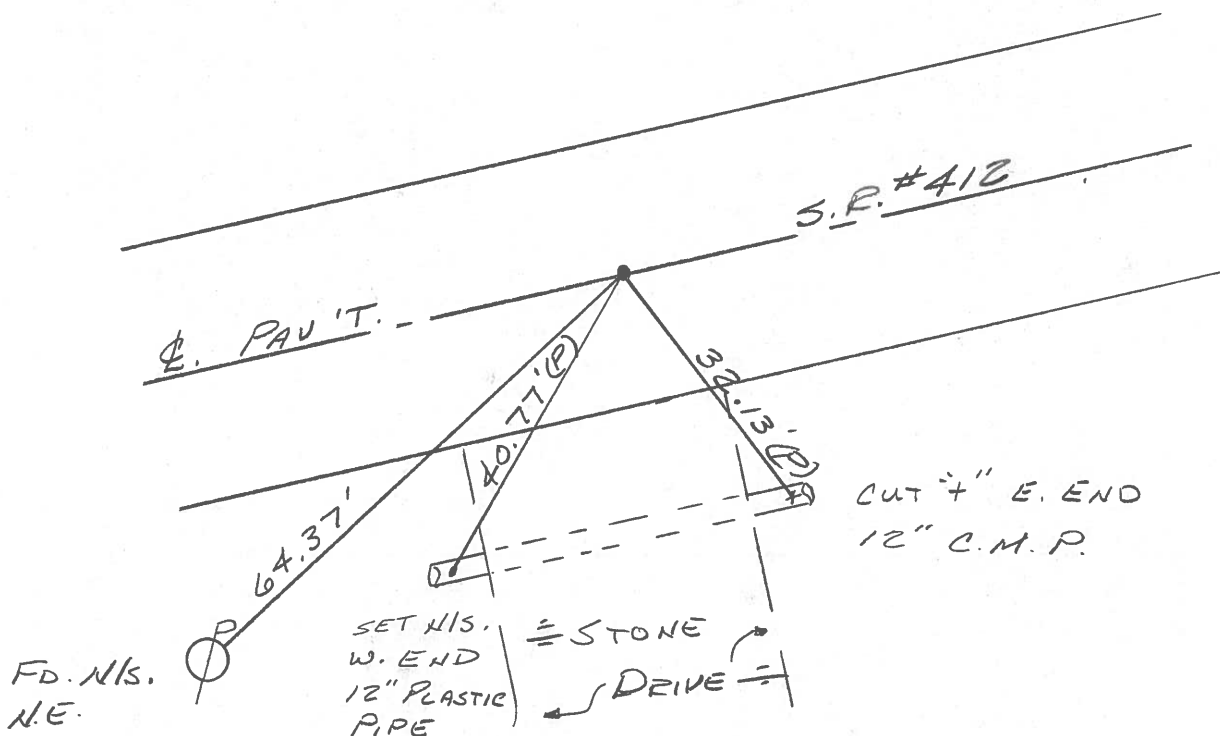
STA. 1221+92.34

PK/WASHER BELOW

SURFACE - DIG WHEN

NEEDED - 1964 PLANS

SET PK/WASHER  
7-22-1993  
RCC



③

ODOT. DISTRICT 2 SURVEY OFFICE

Sht. \_\_\_ of \_\_\_

County Sandusky S.R. 412

Date 9/9/82 Drawn 9/15/82

Township Townsend

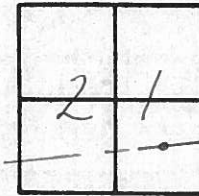
Weather sunny

Section 21

Temp. 75°

T5N, R17E

Personnel Cronin

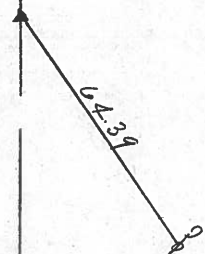


#21-B

Ripple  
Geyman  
Mosser  
Barbour



1221 + 92.34  
P.K. E washer 0.1 below  
surface. Dig when needed  
1964 Plans



R/R/W ?? S.R. #412.7

PERSONNEL	TITLE	PERSONNEL	TITLE
Cronin			
Ash			
Lippie			
Geyman			

COUNTY Sandusky

DATE Tied 4/29/75  
Drawn 2/3/75

S. R. # 412

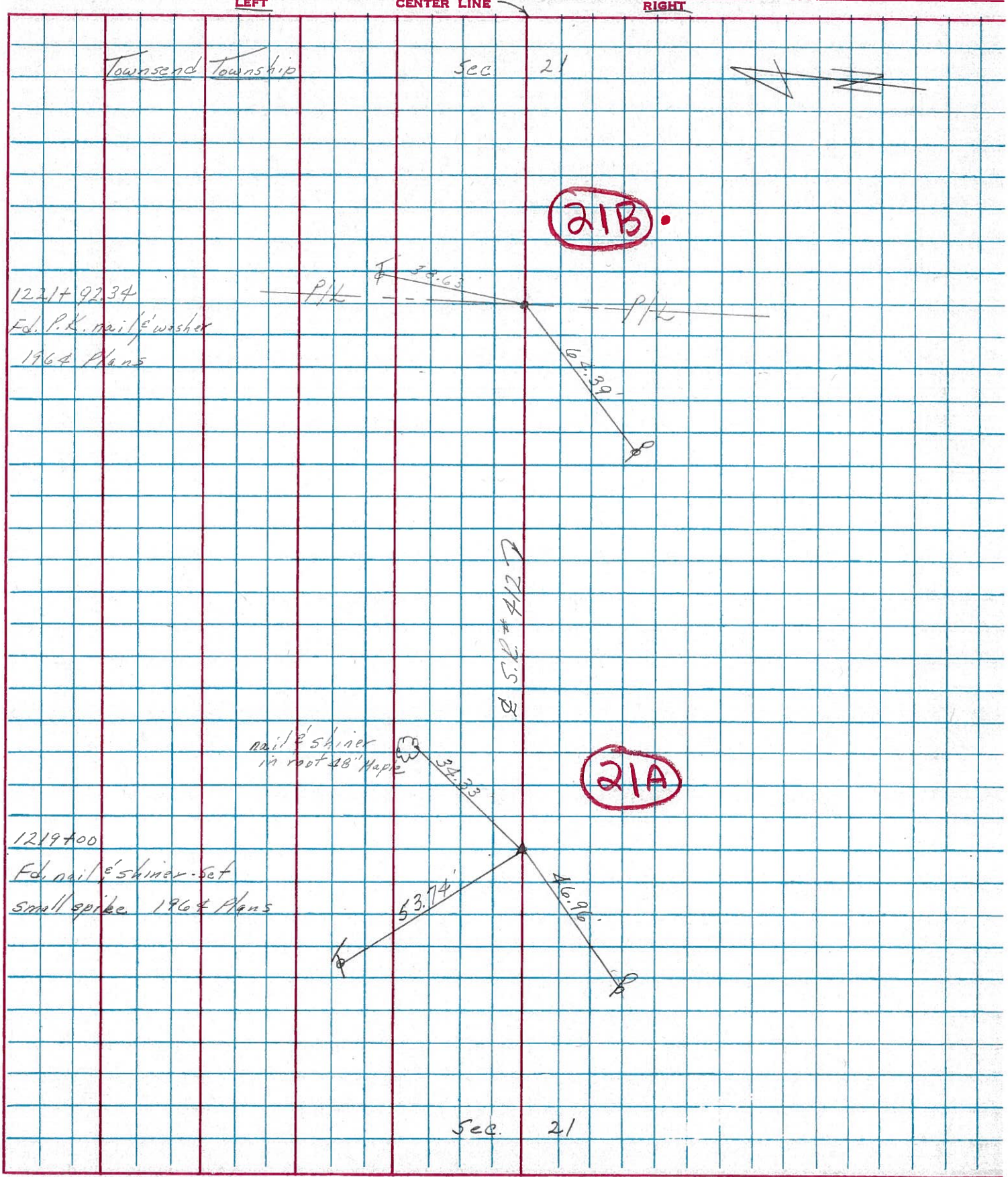
WEATHER sunny

SEC. San. 12-23.24

TEMP. 65°

DESCRIPTION Ties for Control Points

JOB NO.



PERSONNEL	TITLE	PERSONNEL	TITLE	COUNTY	DATE	WEATHER	TEMP.
Schneider				Sandusky	Jan. 1968		
Masser				S. R. #412			
Barbour				SEC. N.E. of Fremont			
Potts							

DESCRIPTION \_\_\_\_\_ LEFT \_\_\_\_\_ CENTER LINE \_\_\_\_\_ RIGHT \_\_\_\_\_ JOB NO. \_\_\_\_\_

