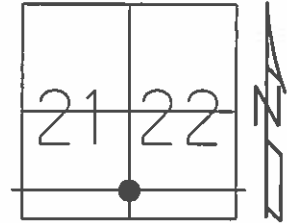


O.D.O.T. DISTRICT 2 SURVEY OFFICE (USE ONLY)

PERSONNEL _____ REFERENCE NO. 22 SHEET 19 OF 34
 NOTES LEU DATE 06-24-2015 ROUTE SR 412
 H.C. LEU WEATHER SUNNY COUNTY SANDUSKY
 R.C. HOMAN TEMP. 76°F TOWNSHIP TOWNSEND
 _____ SECTION 21 & 22
 _____ T 5 N R 17 E

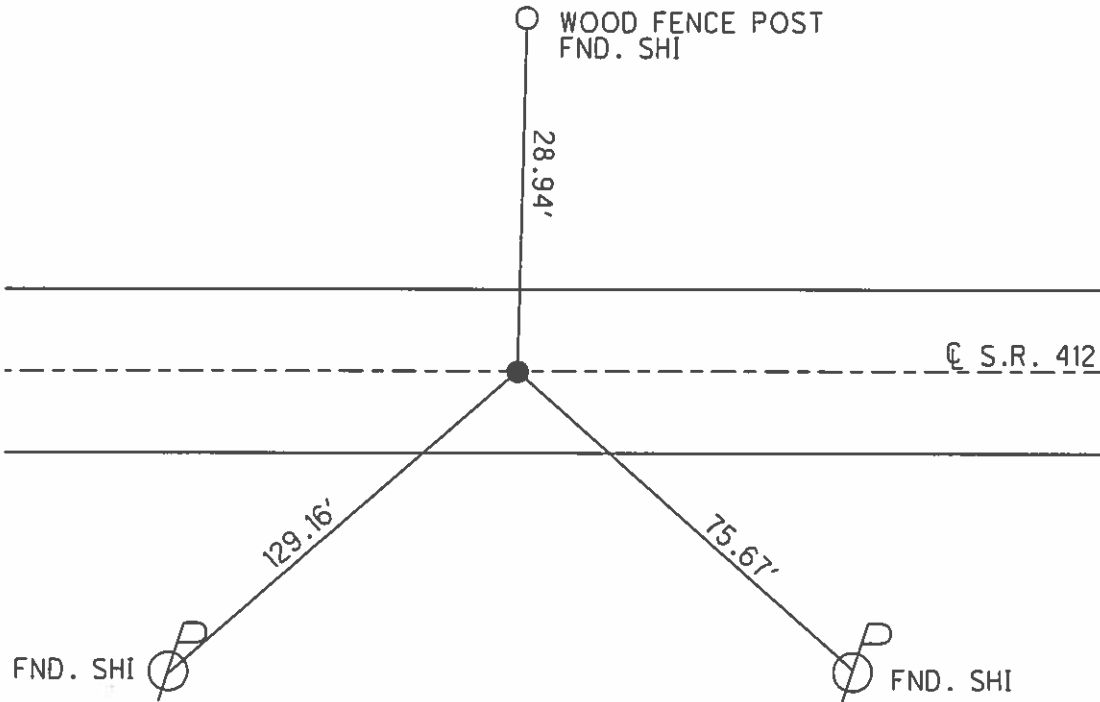
TYPE MONUMENT MAG & WASHER
 ON SURFACE - ~~BELOW~~ ON _____
 LEFT - ☉ PAV'T - ~~RIGHT~~ 0.4'
9.8' TO LT EDGE PAVEMENT
 S.L.M. 513+92
 Grid: Northing: 623173.101 Easting: 1859563.056



REC: 09-09-1982
 STA 1235+20.76
 BRIDGE PLAN 1964

RESET MAG & WASHER
 06-03-2003 M.D.B.

UNCOVERED MAG & WASHER
 09-17-2015 D.C.H.



O.D.O.T. DISTRICT 2 SURVEY OFFICE

PERSONNEL

REFERENCE NO. 22

SHEET 4 OF 16

NOTES Barnhisel

DATE 4-10-03

ROUTE S.R. 412

H.C. Canterbury

WEATHER Cloudy

COUNTY SANDUSKY

R.C. Brumbaugh

TEMP. +35°

TOWNSHIP TOWNSEND

SECTION 21+22

T 5 N R 17 E

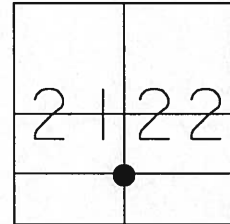
TYPE MONUMENT PK & Washer

ON SURFACE ~~BELOW~~ on surface

LEFT - Q PAV'T - ~~RIGHT~~ 0.4

9.8 TO LT EDGE PAVEMENT

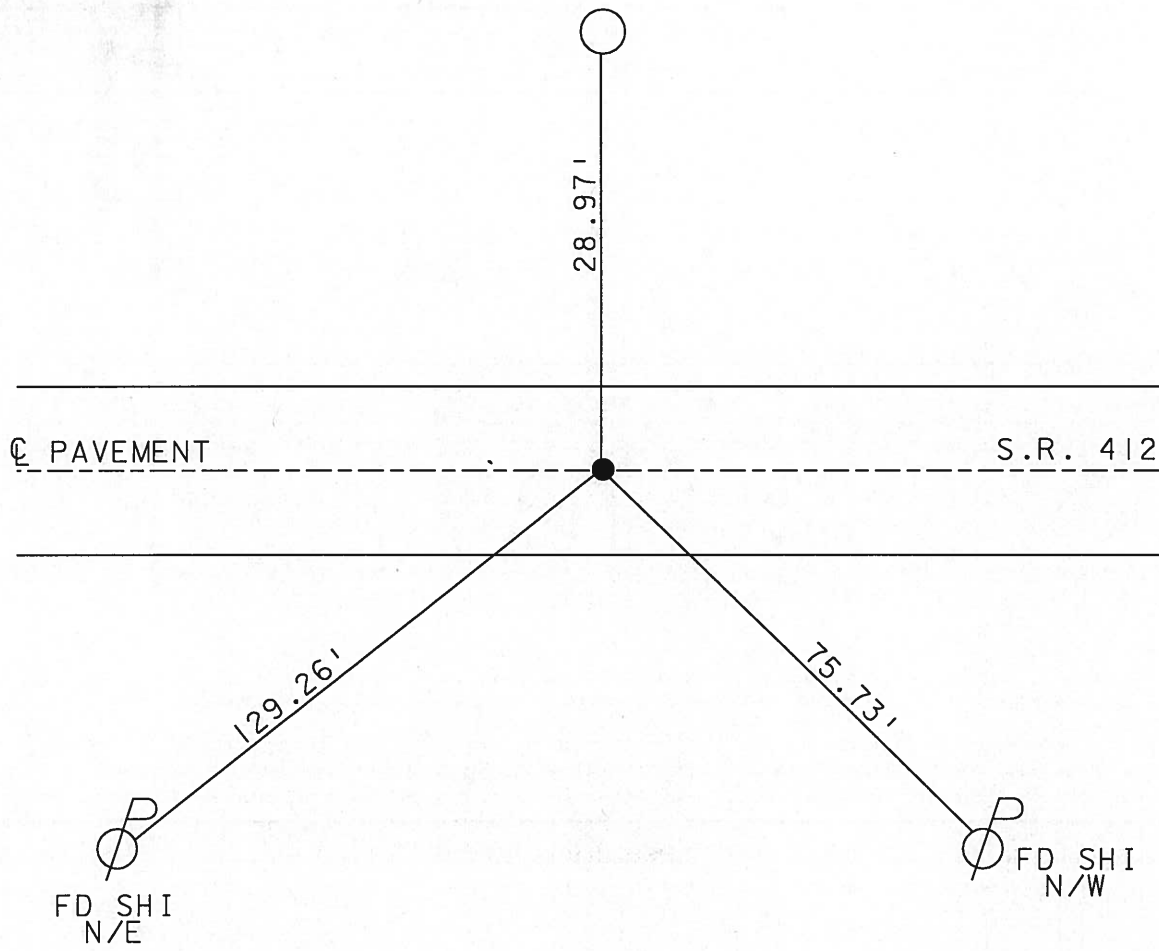
S.L.M. 513+92



RECORD: STA (1235+20.76)
BRIDGE PLAN 1964
→ 9-9-1982

RESET MAG & WASHER
06/03/03
MDB

Wood Fence Post
FD SHI
S/S



O.D.O.T. DISTRICT 2 SURVEY OFFICE

PERSONNEL

REFERENCE NO. 22

SHEET 4 OF 16

NOTES CHENEY

H.C. RIPPLE

DATE 4-28-1993

ROUTE #412

R.C. BARBOUR

WEATHER SUNNY

COUNTY SANDUSKY

GEYMAN

TEMP. 70°

TOWNSHIP TOWNSEND

SECTION 21 & 22

T5N R17E

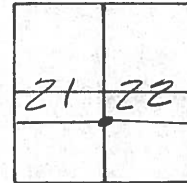
TYPE MONUMENT PK/WASHER

ON SURFACE - ~~BELOW~~ ON

~~LEFT~~ - CL PAV'T. - ~~RIGHT~~ ON

9' TO LT. EDGE PAVEMENT

S.L.M. 513+92



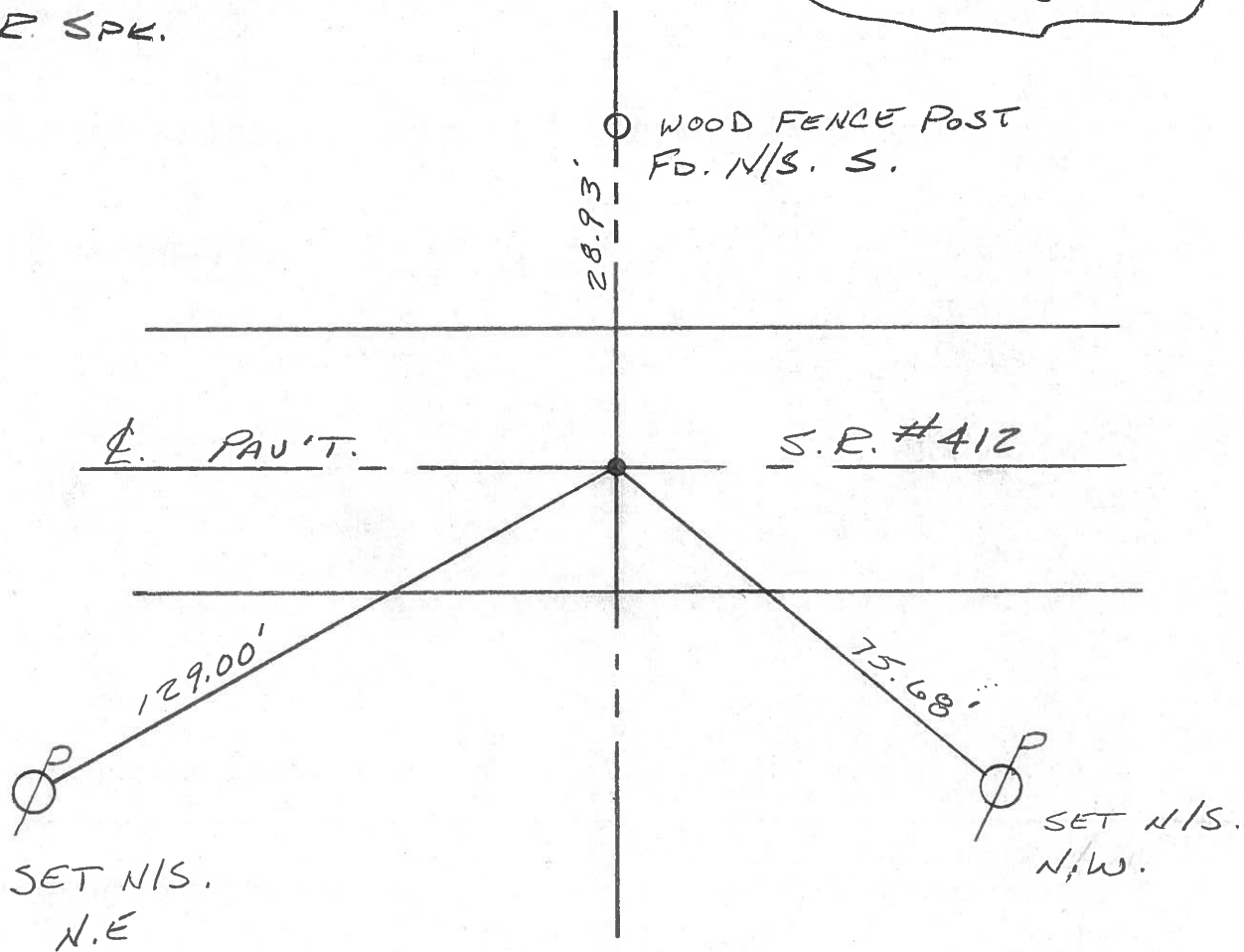
RECORD: 9-9-1982

STA. 1235+20.76

SET PK/WASHER ATOP

R.R. SPK.

SET PK/WASHER
7-22-1993
RCC



County Sandusky S.R. 412

Date 9/9/82 Drawn 9/15/82

Township Townsend

Weather Sunny

Section 21 & 22

Temp. 75°

T⁵N, R¹⁷E

Personnel Cronin

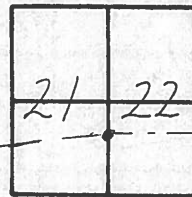
Ripple

Geyman

Mosser

Barbour

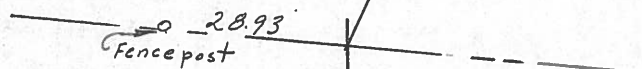
#22



1235+20.76

set P.K. & washer atop R.R.

spike



S.R. 412

PERSONNEL TITLE PERSONNEL TITLE

Cronin

COUNTY Sandusky

Tied 4/29/75

Ash

DATE Drawn 2/3/75

Ripple

S. R. #412

WEATHER sunny

Geyman

SEC. San. 12-23.24

TEMP. 65°

DESCRIPTION Ties for Control Points

JOB NO.

LEFT

CENTER LINE

RIGHT

Townsend Township

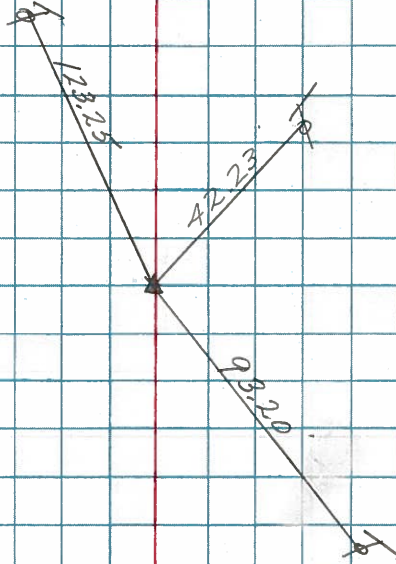
Sec. 22

24

P.I

0.4 Mi East of C.R. #294

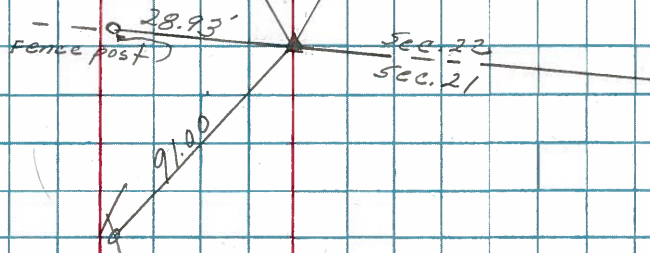
Set R.R. spike (X cut) 4'± Lt. of & of paint - Set this point by splitting paint. Nothing else available



22

1235+20.76

Fd. P.L. nail on surface 0.5'± left of & of paint. 1964 Plans - Potted & set R.R. spike (X cut in spike)



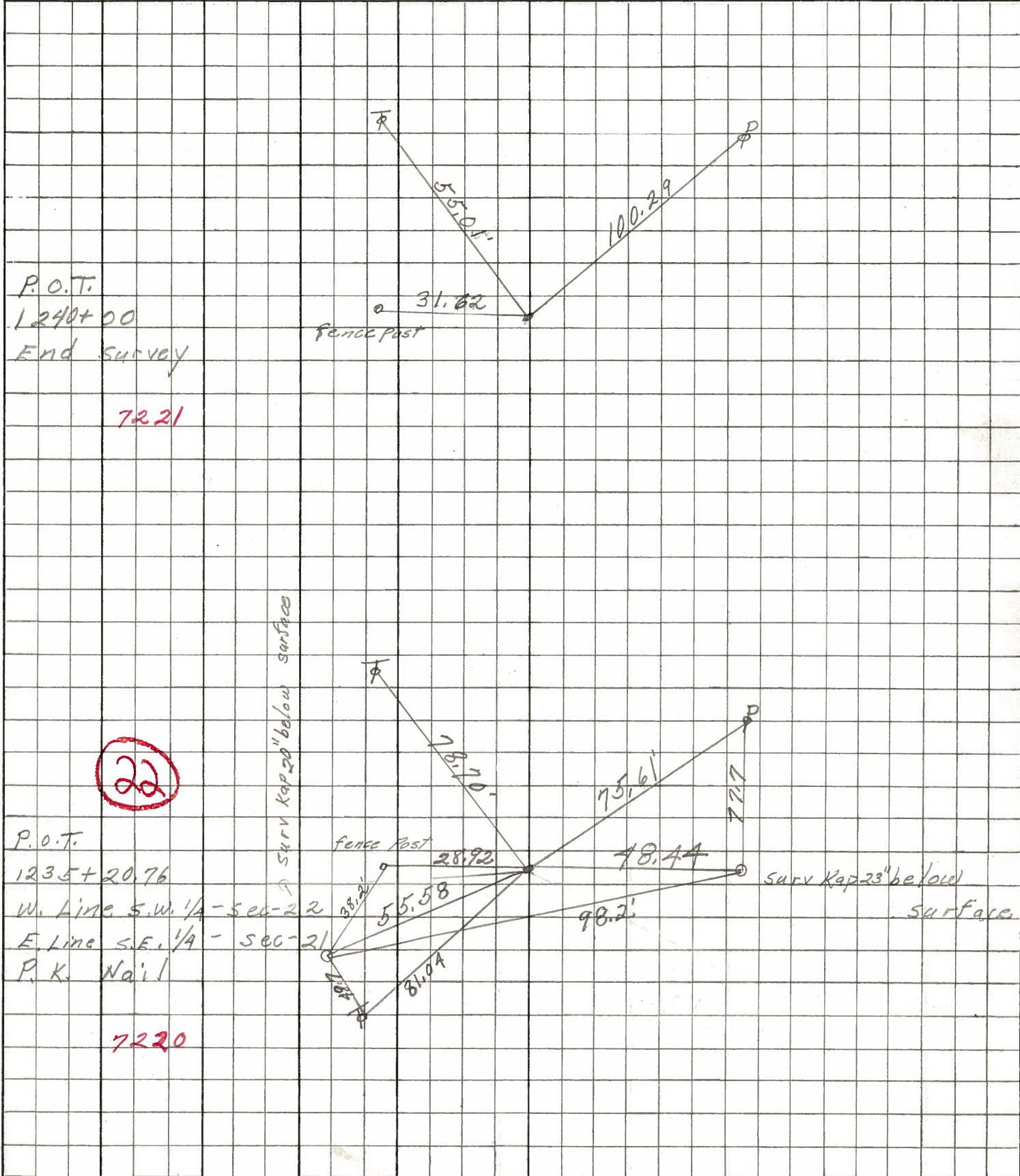
PERSONNEL	TITLE	PERSONNEL	TITLE
Schneider			
Mosser			
Barbour			
Potts			

COUNTY Sandusky DATE Jan. 1968

S. R. #412 WEATHER

SEC. N.E. of Fremont TEMP.

DESCRIPTION Ties for Control Points LEFT CENTER LINE RIGHT JOB NO.



P.O.T.
1240+00
End Survey

7221

22

P.O.T.
1235+20.76
W. Line S.W. 1/4 - sec-22
E. Line S.E. 1/4 - sec-21
P.K. Nail

7220