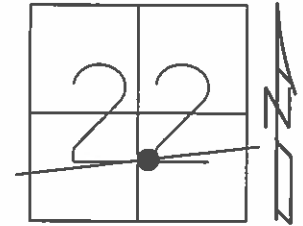


O.D.O.T. DISTRICT 2 SURVEY OFFICE (USE ONLY)

PERSONNEL _____ REFERENCE NO. 24 SHEET 20 OF 34
 NOTES LEU DATE 06-24-2015 ROUTE SR 412
 H.C. LEU WEATHER SUNNY COUNTY SANDUSKY
 R.C. HOMAN TEMP. 76°F TOWNSHIP TOWNSEND
 _____ SECTION 22
 _____ T 5 N R 17 E

TYPE MONUMENT MAG & WASHER
 ON SURFACE - ~~BELOW~~ ON
 LEFT - ☉ PAV'T - RIGHT 3.9'
6.2' TO LT EDGE PAVEMENT
 S.L.M. 550+33

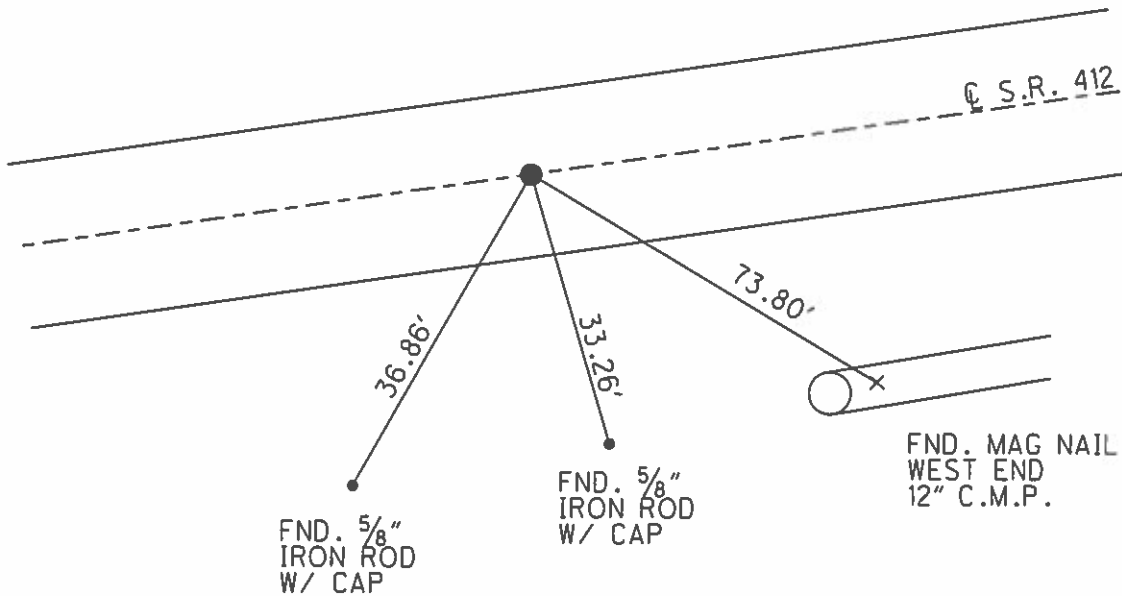


Grid: Northing: 623616.884 Easting: 1863170.883

RECORD: 09-09-1982
 P.I. - 0.4 MI. E. OF C.R. 294
 POINT WAS SET BY SPLITTING
 PAV'T FWD. & BACK. NOTHING
 ELSE WAS AVAILABLE. RR SPK.
 0.1'± BELOW SURFACE
 4'± LT ☉ PAV'T

RESET MAG & WASHER
 06-03-2003 M.D.B.

UNCOVERED MAG & WASHER
 09-17-2015 D.C.H.



O.D.O.T. DISTRICT 2 SURVEY OFFICE

PERSONNEL

REFERENCE NO. 24

SHEET 5 OF 16

NOTES Barnhisel

DATE 04-10-03

ROUTE SR 412

H.C. Canterbury

WEATHER Cloudy

COUNTY Sandusky

R.C. Barnhisel

TEMP. +35°

TOWNSHIP Townsend

Brumbaugh

SECTION 22

T 5 N R 17 E

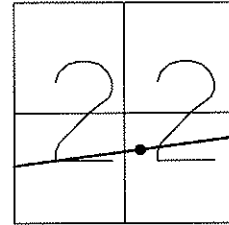
TYPE MONUMENT Mag & Washer

ON SURFACE - ~~BELOW~~ on surface

LEFT - Q PAV'T - ~~RIGHT~~ 3.9'

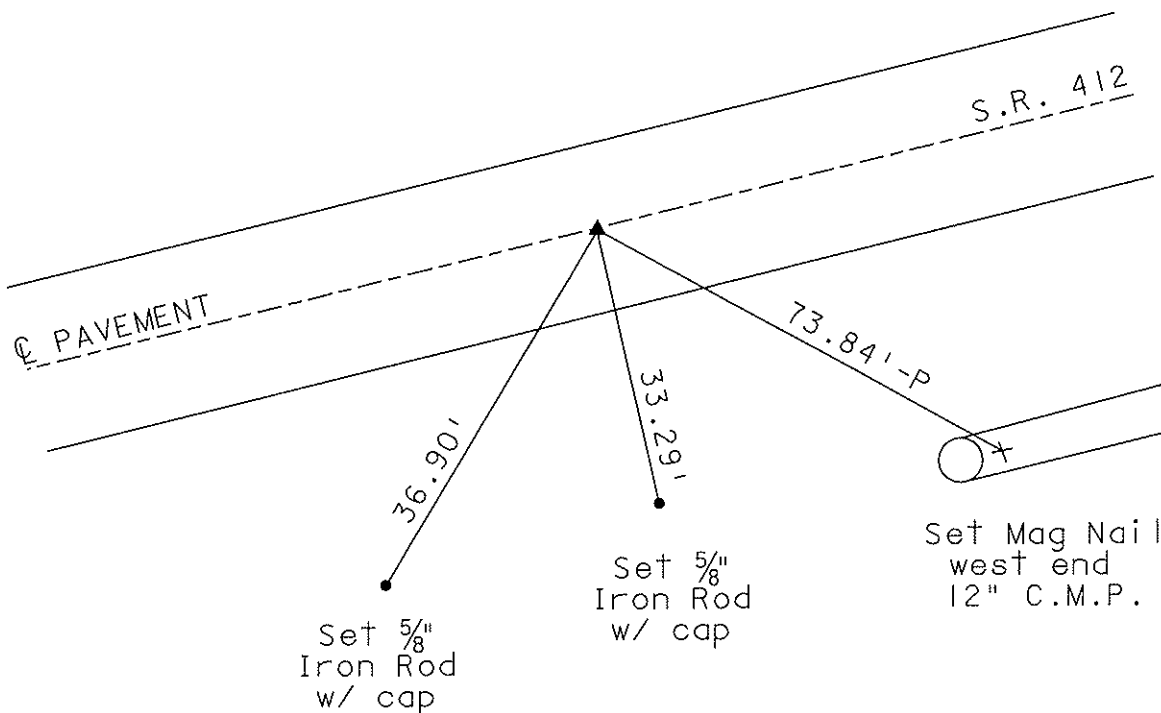
6.2' TO LT EDGE PAVEMENT

S.L.M. 550+33



Record# 09-09-1982
 P.I. - 0.4 Mi. E. of C.R. 294
 Point was set by splitting
 pav't fwd. & back. Nothing
 else was available. RR Spk.
 0.1'+/- below surface,
 4'+/- LT Q pav't.

RESET MAG & WASHER
 06/03/03
 MDB



O.D.O.T. DISTRICT 2 SURVEY OFFICE

PERSONNEL

REFERENCE NO. # 24

SHEET 5 OF 16

NOTES CHENEY

H.C. RIPPLE

DATE 4-28-1993

ROUTE #412

R.C. BARBOUR

WEATHER SUNNY

COUNTY SANDUSKY

GEYMAN

TEMP. 70°

TOWNSHIP TOWNSEND

SECTION 22

T. 5 N. R. 17 E

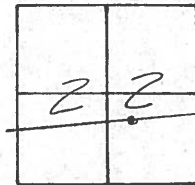
TYPE MONUMENT R.P. SPK.

~~ON~~ SURFACE - BELOW 2"±

LEFT - CL PAU'T. - ~~RIGHT~~ 4'±

5'± TO LT. EDGE PAVEMENT

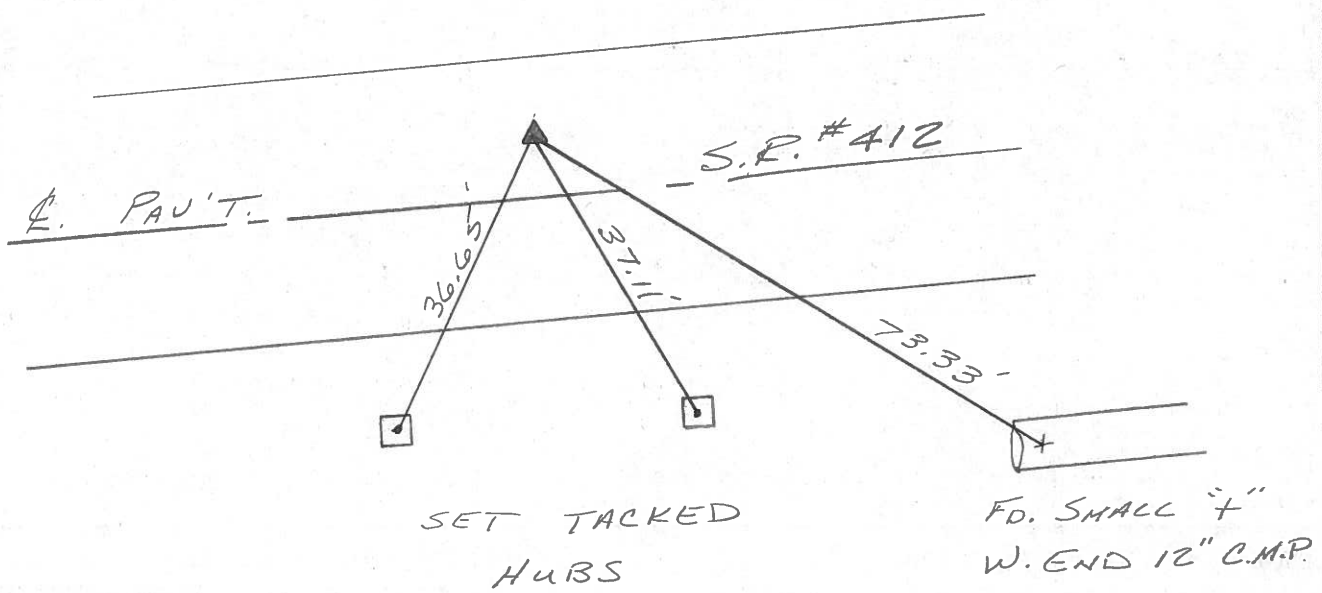
S.L.M. 550+33



RECORD: 9-9-1982

P.I. - 0.4 MI. E. OF C.R. #294
 POINT WAS SET BY SPLITTING
 PAU'T. FWD. & BACK. NOTHING
 ELSE WAS AVAILABLE. R.P.
 SPK. 0.1'± BELOW SURFACE,
 4'± LT. CL PAU'T.

SET PK/WASHER
 7-22-1993
 FCC



County Sandusky S.R. 412

Date 9/9/82

Township Townsend

Weather sunny

Section 22

Temp. 60°

T5N, R12E

Personnel Cronin

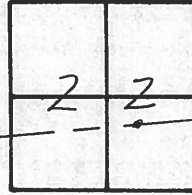
Ripple

Geyman

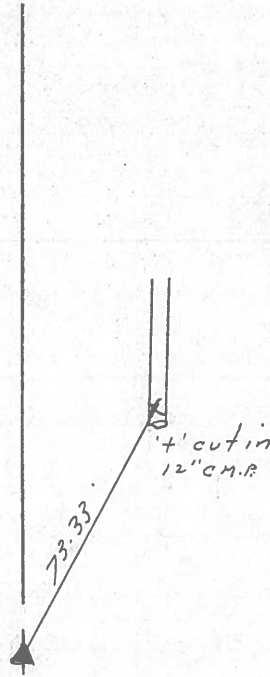
Mosser

Barbour

#24



P.I.
0.4 East of C.R. #294 - Point
was set by splitting pavement
 fwd. & back. Nothing else was
 available. R.R. spike 0.1 ±
 below surface 4 ± Lt. & Pavement



R.R. ? S.R. #412

PERSONNEL TITLE PERSONNEL TITLE

COUNTY Sandusky

Tied 4/29/75
DATE Drawn 2/3/75

Cronin

Ash

Ripple

Geyman

S. R. #412

WEATHER sunny

SEC. San. 12-23.24

TEMP. 65°

DESCRIPTION Ties for Control Points

LEFT CENTER LINE RIGHT JOB NO.

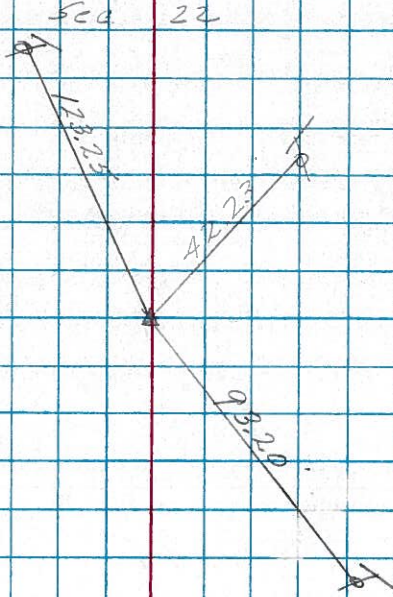
Townsend Township

24

P.I.

0.4 Mi. East of C.R. #294

Set R.R. spike (X cut) 4'± left of
E of point - Set this point
by splitting point. Nothing
else available



22

1235+20.76

Fd. P.L. nail on surface
0.5'± left of E of point.
1964 Plans - Potted &
set R.R. spike (X cut in spike)

