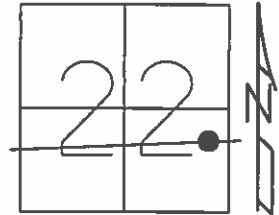


O.D.O.T. DISTRICT 2 SURVEY OFFICE (USE ONLY)

PERSONNEL _____ REFERENCE NO. 24 A SHEET 21 OF 34
 NOTES LEU DATE 06-24-2015 ROUTE SR 412
 H.C. LEU WEATHER PARTLY CLOUDY COUNTY SANDUSKY
 R.C. HOMAN TEMP. 76°F TOWNSHIP TOWNSEND
 _____ SECTION 22
 _____ T 5 N R 17 E

TYPE MONUMENT MAG & WASHER
 ON SURFACE - ~~BELOW~~ ON _____
~~LEFT~~ - ☐ PAV'T - ~~RIGHT~~ ON _____
10.1' TO RT EDGE PAVEMENT
 S.L.M. 562+16

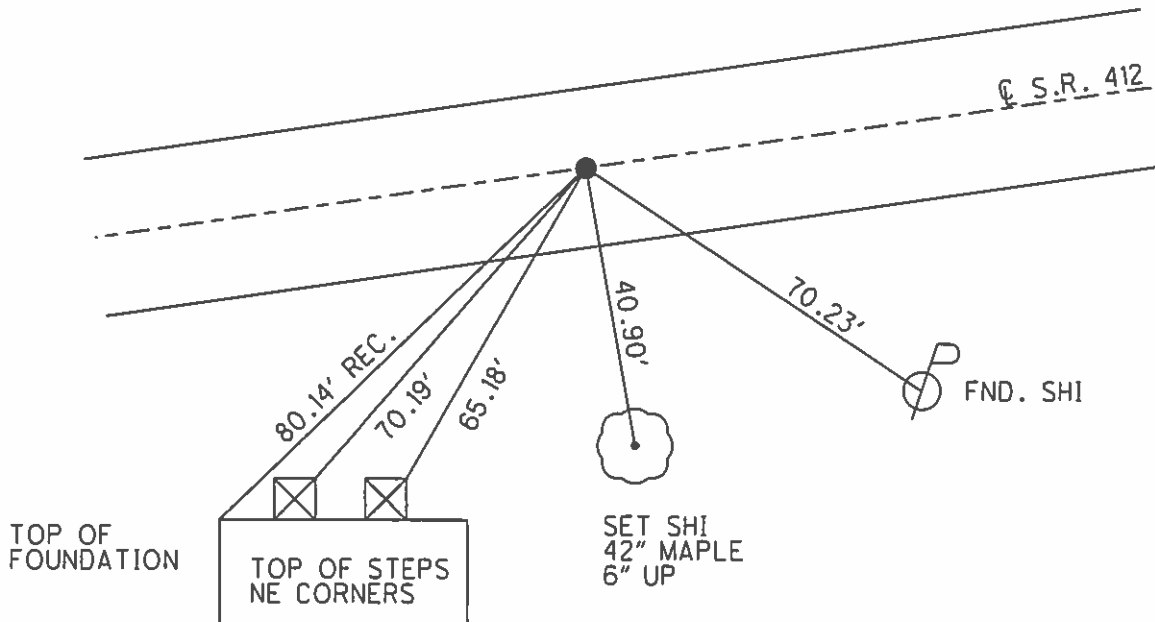


Grid: Northing: 623627.806 Easting: 1864352.136

RECORD: 05-02-1989
 P.I.
 0.65± MI. E. OF CR# 294
 0.1± MI. W. OF CR# 302
 POINT SET BY SPLITTING PAV'T
 NOTHING ELSE AVAILABLE

RESET MAG & WASHER
 06-03-2003 M.D.B.

UNCOVERED MAG & WASHER
 09-17-2015 D.C.H.



O.D.O.T. DISTRICT 2 SURVEY OFFICE

PERSONNEL

REFERENCE NO. 24-A

SHEET 6 OF 16

NOTES Barnhisel

DATE 4-10-03

ROUTE S.R. 412

H.C. Canterbury

WEATHER cloudy

COUNTY SANDUSKY

R.C. Barnhisel

TEMP. +35°

TOWNSHIP TOWNSEND

Brumbaugh

SECTION 22

T 5 N R 17 E

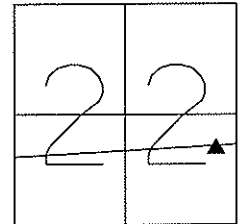
TYPE MONUMENT PK & Washer

ON SURFACE - ~~BELOW~~ on surface

~~LEFT~~ - Q PAV'T - ~~RIGHT~~ on Q

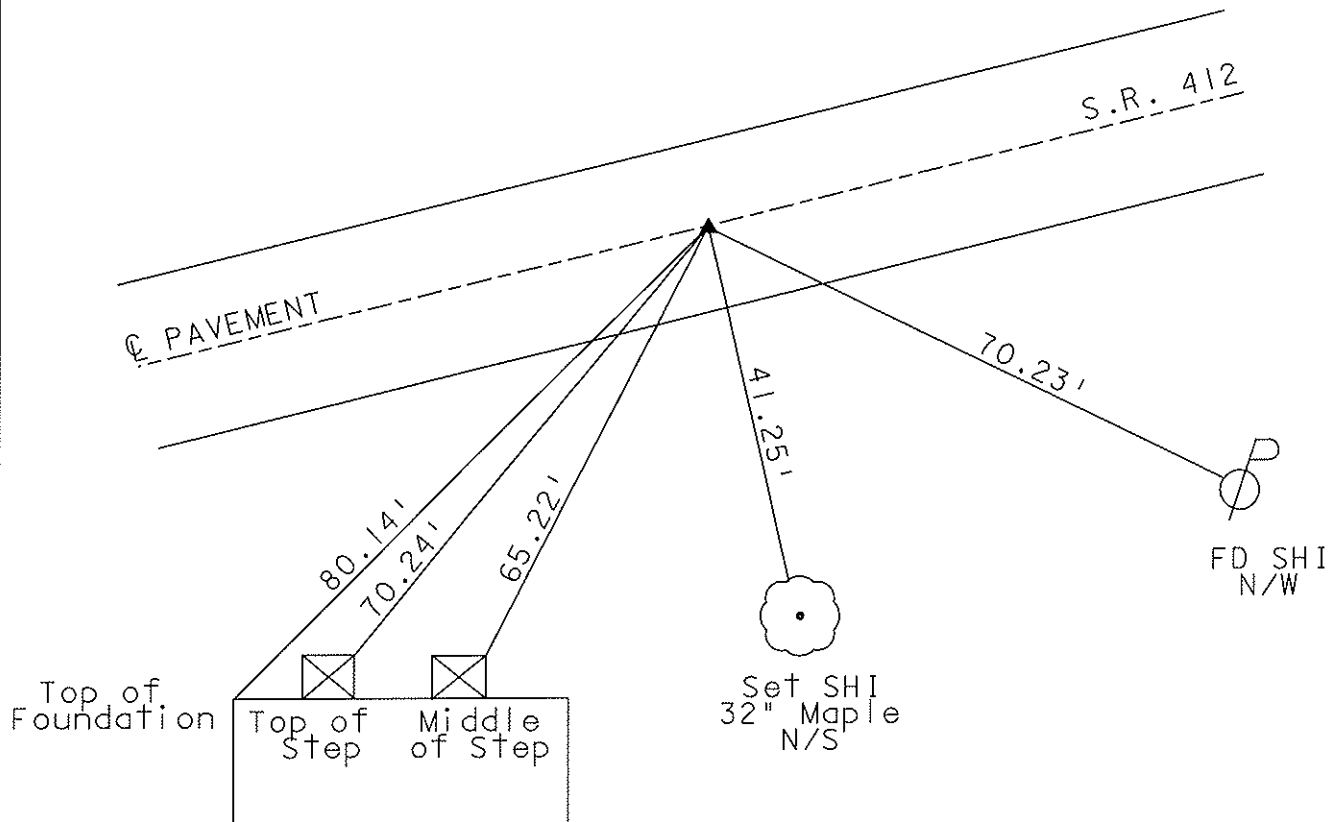
10.1 TO RT EDGE PAVEMENT

S.L.M. 562+16



Record: 05-02-1989
 P.I.
 0.65 +/- Mi. E. of CR# 294
 0.1 +/- Mi. W. of CR# 302
 Point set by splitting pav't.
 Nothing else available.

RESET MAG & WASHER
 06/03/03
 MDB



O.D.O.T. DISTRICT 2 SURVEY OFFICE

PERSONNEL

REFERENCE NO. 24-A

SHEET 6 OF 16

NOTES CHENEY

H.C. RIPPLE

DATE 4-28-1993

ROUTE #412

R.C. BARBOUR

WEATHER SUNNY

COUNTY SANDUSKY

CAHYMAN

TEMP. 70°

TOWNSHIP TOWSEND

SECTION 22

T S N R I T E

TYPE MONUMENT PK / WASHER

ON SURFACE - BELOW ON

~~LEFT~~ - C. PAV'T. - ~~RIGHT~~ ON

9'± TO LT. EDGE PAVEMENT

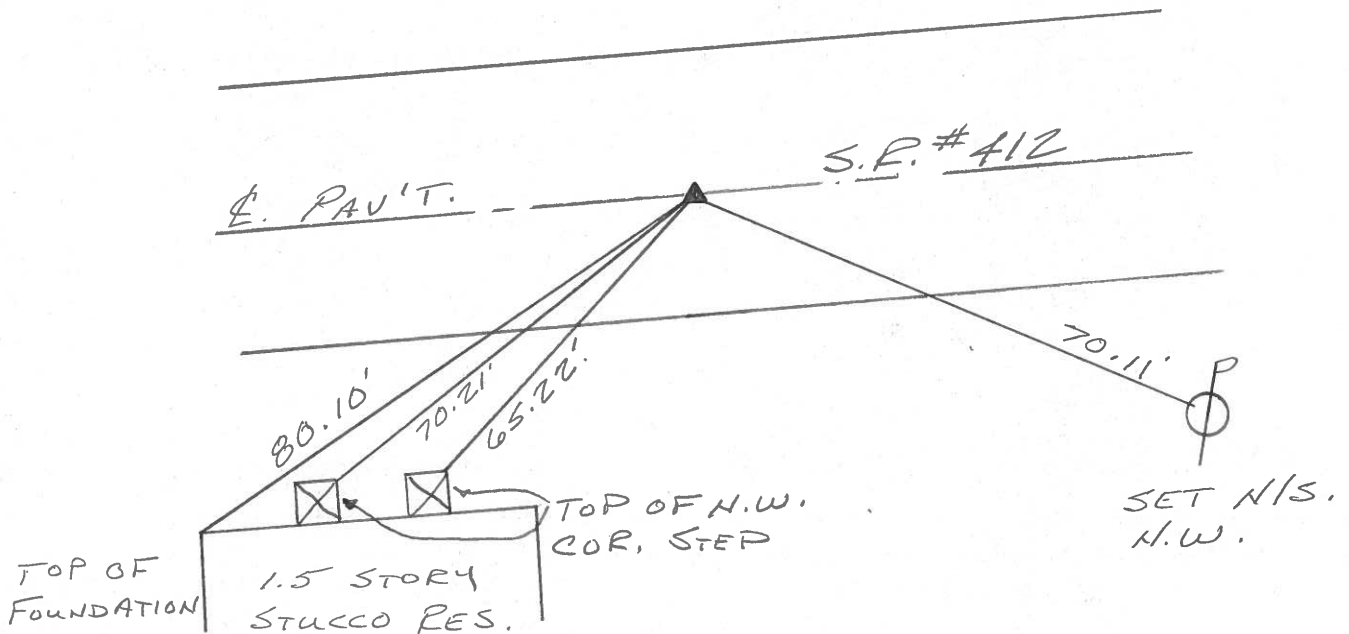
S.L.M. 562+16



RECORD: 5-2-1989

SET PK/WASHER
 7-22-1993
 RCC

P.I.
 0.65 ± MI. E. OF C.R.#294
 0.1 ± MI. W. OF C.R.#302
 POINT SET BY SPLITTING
 PAV'T. - NOTHING ELSE
 AVAILABLE.



O.D.O.T. DISTRICT 2 SURVEY OFFICE

PERSONNEL

REFERENCE NO. 24-A

SHEET 1 OF 2

NOTES CRONIN

H.C. RIPPLE

R.C. GEYMAN

BARBOUR

DATE 5-2-89

WEATHER SUNNY

TEMP. +55°

ROUTE S.R. 412

COUNTY SANDUSKY

TOWNSHIP TOWNSEND

SECTION 22

T 5 N R 17 E

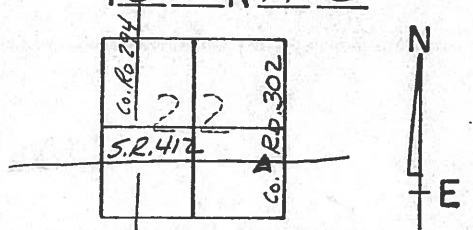
TYPE MONUMENT P.K. WASHER ATOP R.R. SINK.

ON SURFACE - BELOW _____

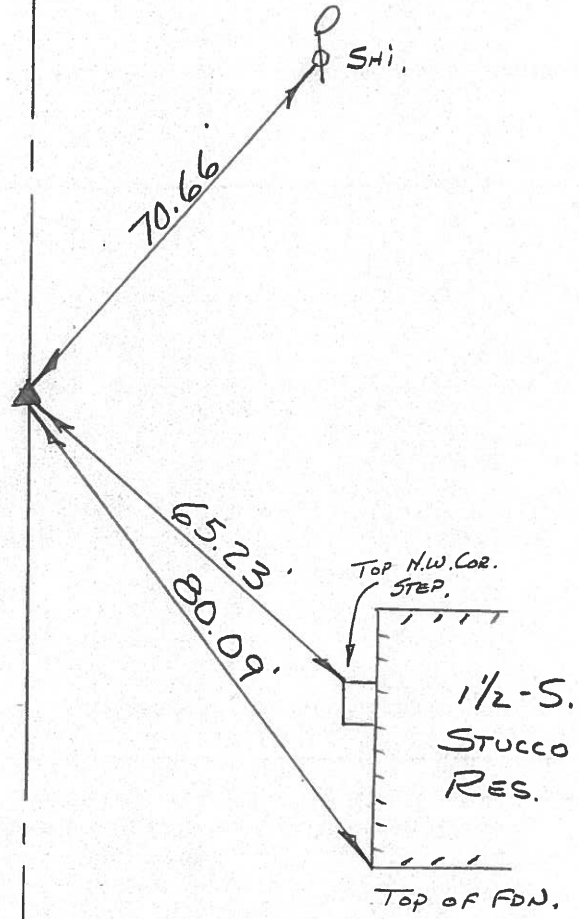
LEFT - & PAV'T. - RIGHT _____

_____ TO _____ EDGE PAVEMENT

S.L.M. 531 + 59.39



P.I.
 0.65 mi. ± E. OF Co. Rd. #294 &
 0.10 mi. ± W. OF Co. Rd. #302
 POINT SET BY SPLITTING PAVE.
 NOTHING ELSE AVAILABLE



County Sandusky S.R. 412

Township Townsend

Section 22

T5N, R17E

Personnel Cronin

Ripple

Geyman

Mosser

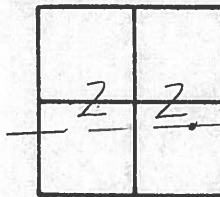
Barbour

24-A

Date 9/9/82 Drawn 9/15/82

Weather sunny

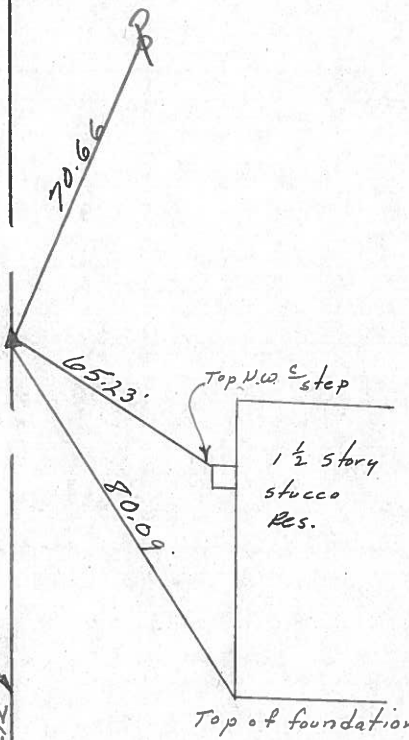
Temp. 60°



P.I.
0.65 Mi. East of C.R. #294
Point was set by splitting
pavement. Nothing else
available - Set P.K. & washer
atop R.R. spike

ALSO 0.10 Mi. W. of C.R. #302
OK 1-3-85

E.R./W.?? S.R. #412



PERSONNEL TITLE PERSONNEL TITLE

Cronin
Ash
Ripple
Geyman

COUNTY Sandusky

DATE Drawn 4/29/75
2/3/75

S. R. #412

WEATHER sunny

SEC.

TEMP. 65°

DESCRIPTION Ties For Control Points

JOB NO.

LEFT CENTER LINE RIGHT

Townsend Township

Sec. 23



26A

chisel mark 1.7' up from ground

30 M.P.H. sign post

54.23

40.50

P.O.T.

Set L.L. spike (x out)
0.6 Mi. East of C.R. #302
set this point by splitting
paint

Sec. 23

Sec. 22

S.R. #412

24A.

P.T.

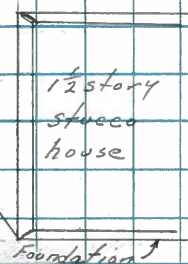
0.65 Mi. East of C.R. #294
Set R.R. spike (x out)
set this point by
splitting paint.

21.10

20.64

65.54

50.00



Sec. 22