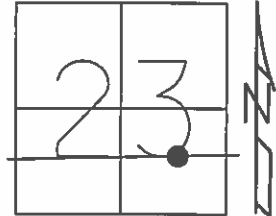


O.D.O.T. DISTRICT 2 SURVEY OFFICE (USE ONLY)

PERSONNEL _____ REFERENCE NO. 26 B2 SHEET 24 OF 34
 NOTES HOMAN DATE 06-25-2015 ROUTE SR 412
 H.C. HOMAN WEATHER CLOUDY COUNTY SANDUSKY
 R.C. LEU TEMP. 70°F TOWNSHIP TOWNSEND
 SECTION 23
 T 5 N R 17 E

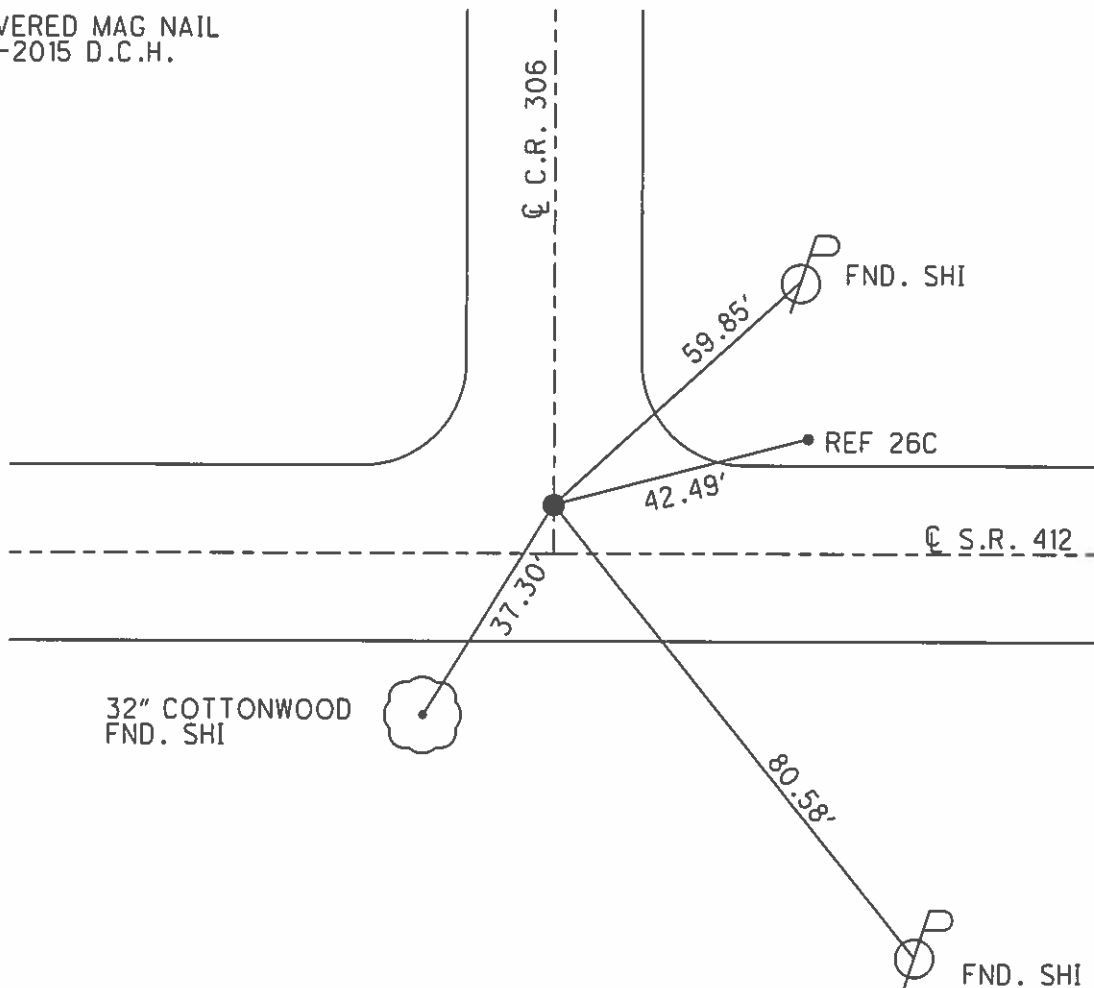
TYPE MONUMENT MAG & WASHER
 ON SURFACE - ~~BELOW~~ ON _____
 LEFT - ℄ PAV'T - ~~RIGHT~~ 4.3'
14.9' TO RT EDGE PAVEMENT
 S.L.M. 608+41



Grid: Northing: 623747.498 Easting: 1868948.924

RESET MAG & WASHER
 06-03-2003 M.D.B.

UNCOVERED MAG NAIL
 09-17-2015 D.C.H.



O.D.O.T. DISTRICT 2 SURVEY OFFICE

PERSONNEL

REFERENCE NO. 26-B2

SHEET 9 OF 16

NOTES Barnhisel

DATE 4-10-03

ROUTE S.R. 412

H.C. Canterberry

WEATHER Cloudy

COUNTY SANDUSKY

R.C. Brumbaugh

TEMP. +35°

TOWNSHIP TOWNSEND

SECTION 23

T 5 N R 17 E

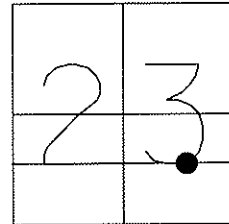
TYPE MONUMENT PK & Washer

ON SURFACE - ~~BELOW~~ on surface

LEFT - ☉ PAVT - ~~RIGHT~~ 4.3'

14.9 TO RT EDGE PAVEMENT

S.L.M. 608+41



RESET MAG & WASHER
06/03/03
MDB

