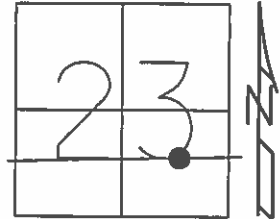


O.D.O.T. DISTRICT 2 SURVEY OFFICE (USE ONLY)

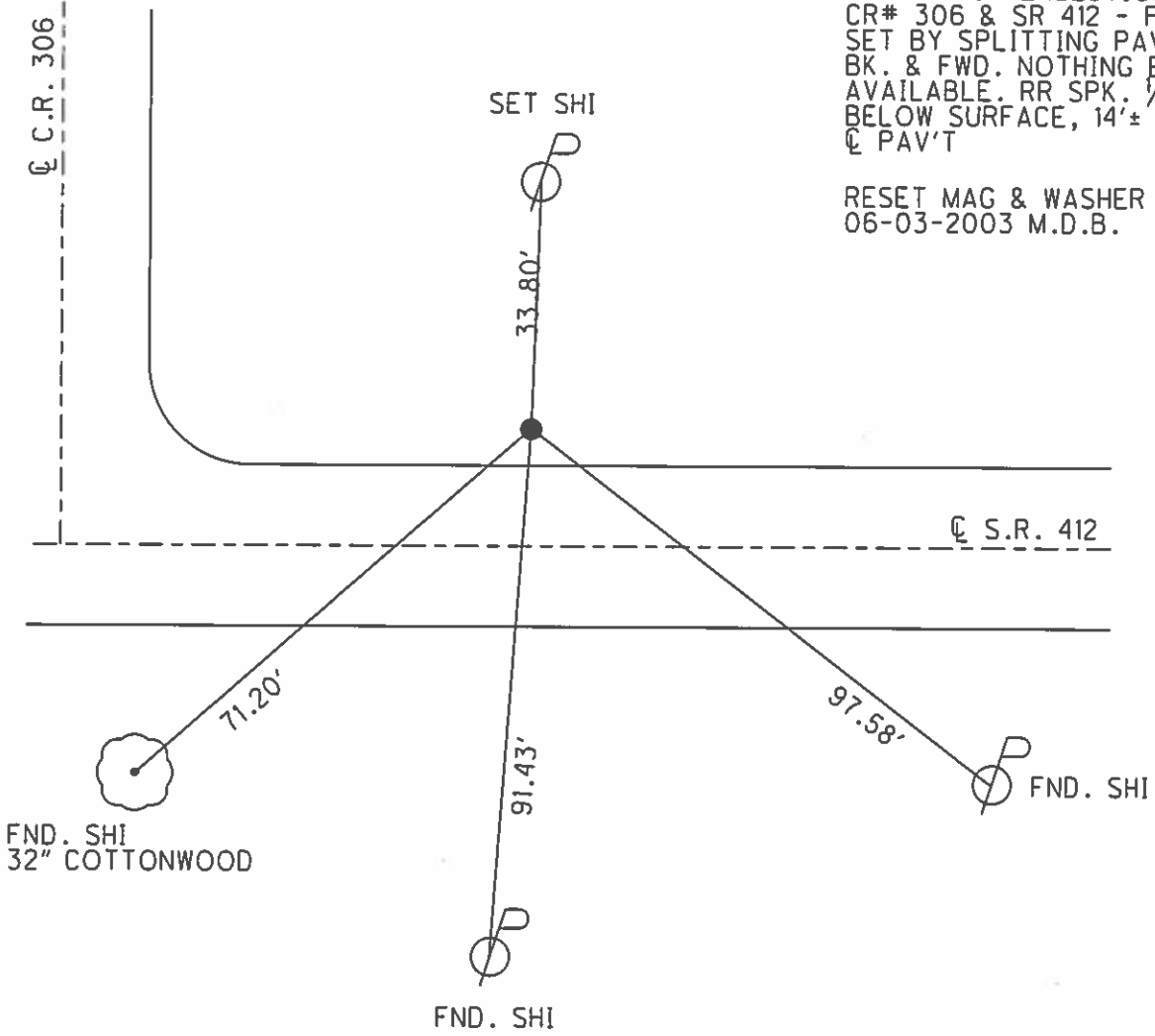
PERSONNEL \_\_\_\_\_ REFERENCE NO. 26 C SHEET 25 OF 34  
 NOTES HOMAN DATE 04-10-2003 ROUTE SR 412  
 H.C. HOMAN WEATHER CLOUDY COUNTY SANDUSKY  
 R.C. LEU TEMP. 35°F TOWNSHIP TOWNSEND  
 \_\_\_\_\_ SECTION 23  
 \_\_\_\_\_ T 5 N R 17 E

TYPE MONUMENT PK & WASHER  
~~ON SURFACE~~ - BELOW 1.5'  
 LEFT - ☉ PAV'T - ~~RIGHT~~ 14.6'  
5.2' LT TO LT EDGE PAVEMENT  
 S.L.M. 608+82  
 Grid: Northing: 623763.871 Easting: 1868988.158



REC: 09-09-1982  
 P.I. Δ RT.  
 NE COR. INTERSECTION OF  
 CR# 306 & SR 412 - POINT  
 SET BY SPLITTING PAV'T  
 BK. & FWD. NOTHING ELSE  
 AVAILABLE. RR SPK. 1/2"  
 BELOW SURFACE, 14'± LT  
 ☉ PAV'T

RESET MAG & WASHER  
 06-03-2003 M.D.B.



O.D.O.T. DISTRICT 2 SURVEY OFFICE

PERSONNEL

REFERENCE NO. 26-C

SHEET 10 OF 16

NOTES Barnhisel

DATE 4-10-03

ROUTE S.R. 412

H.C. Canterbury

WEATHER Cloudy

COUNTY SANDUSKY

R.C. Brumbaugh

TEMP. +35°

TOWNSHIP TOWNSEND

SECTION 23

T 5 N R 17 E

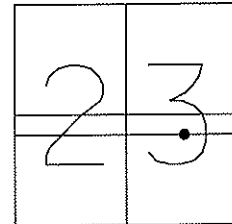
TYPE MONUMENT PK & Washer

~~ON SURFACE~~ - BELOW 1.5"

LEFT - Q PAV'T - ~~RIGHT~~ 14.6'

5.2' LT OF LT EDGE PAVEMENT

S.L.M. 608+82



RESET MAG & WASHER  
06/03/03  
MDB

Record: 09-09-1982  
P.I. Δ Rt.

NE Cor. Intersection of  
CR #306 & SR 412- Point  
set by splitting pav't  
bk. & fwd. Nothing else  
available. RR Spk.  
1/2" below surface,  
14' +/- LT Q pav't.

