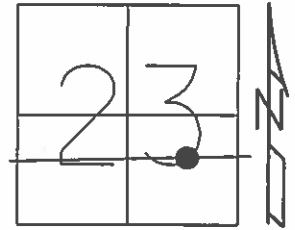


O.D.O.T. DISTRICT 2 SURVEY OFFICE (USE ONLY)

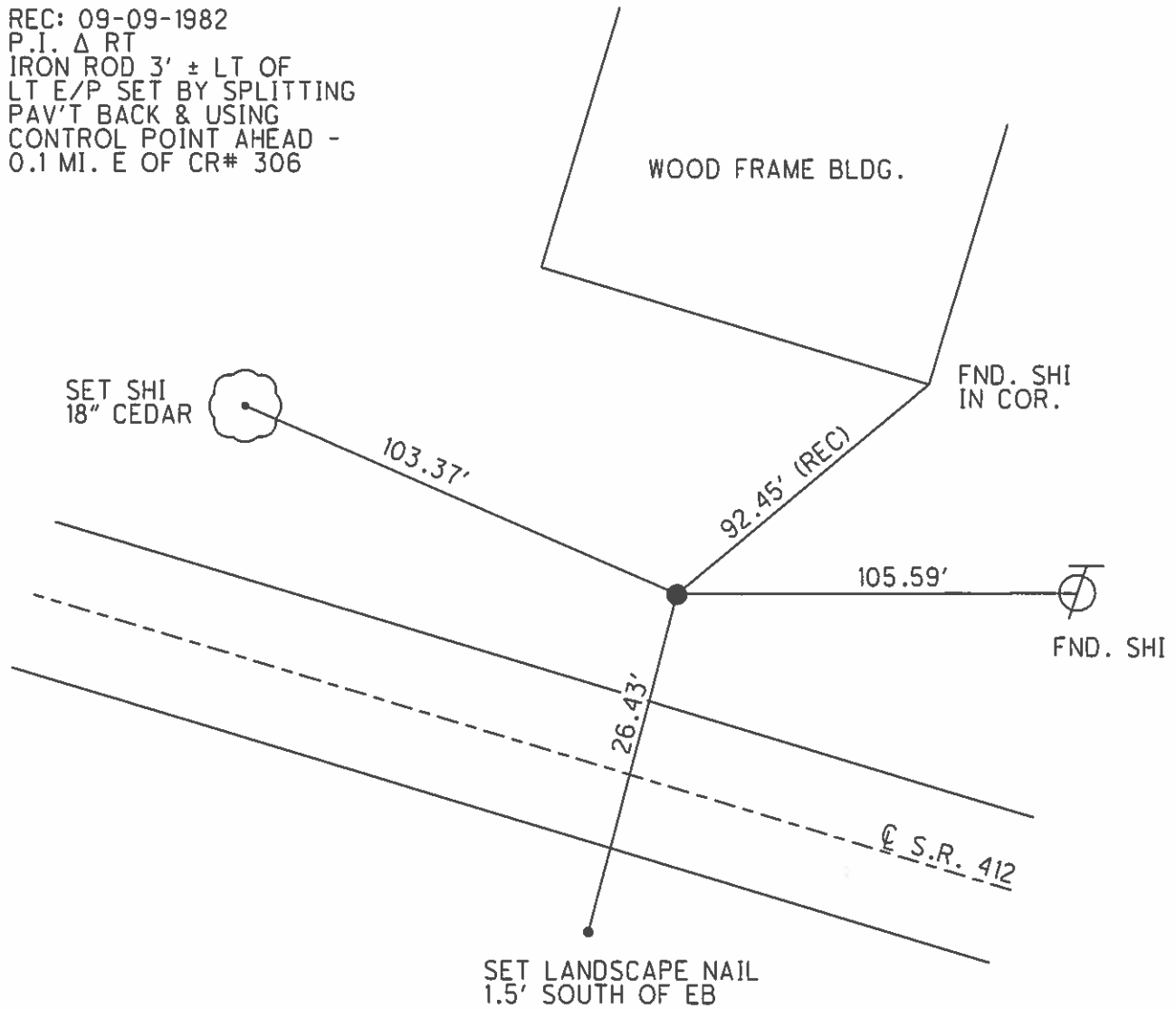
PERSONNEL \_\_\_\_\_ REFERENCE NO. 26 D SHEET 26 OF 34  
 NOTES HOMAN DATE 06-26-2015 ROUTE SR 412  
 H.C. HOMAN WEATHER CLOUDY COUNTY SANDUSKY  
 R.C. LEU TEMP. 70°F TOWNSHIP TOWNSEND  
 \_\_\_\_\_ SECTION 23  
 \_\_\_\_\_ T 5 N R 17 E

TYPE MONUMENT 1" IPIN  
~~ON SURFACE~~ - BELOW 0.7'  
 LEFT - ☉ PAV'T - ~~RIGHT~~ 13'  
3.3' TO RT EDGE PAVEMENT  
 S.L.M. 614+48



Grid: Northing: 623630.572 Easting: 1869542.464

REC: 09-09-1982  
 P.I. Δ RT  
 IRON ROD 3' ± LT OF  
 LT E/P SET BY SPLITTING  
 PAV'T BACK & USING  
 CONTROL POINT AHEAD -  
 0.1 MI. E OF CR# 306



O.D.O.T. DISTRICT 2 SURVEY OFFICE

PERSONNEL

REFERENCE NO. 26-D

SHEET 11 OF 16

NOTES Barnhisel

DATE 4-10-03

ROUTE S.R. 412

H.C. Canterbury

WEATHER Cloudy

COUNTY SANDUSKY

R.C. Brumbaugh

TEMP. +35°

TOWNSHIP TOWNSEND

SECTION 23

T 5 N R 17 E

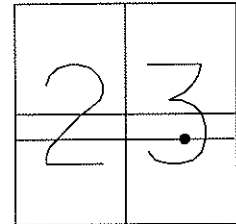
TYPE MONUMENT 1" Iron Rod

~~ON SURFACE~~ - BELOW 0.7'

LEFT - Q PAV'T - ~~RIGHT~~ 13'

3.3' RT TO RT EDGE PAVEMENT

S.L.M. 614+48



Set SHI  
14" Cedar  
E/S



Wood Frame Bldg.

FD SHI  
in cor.

103.62'

92.45' (rec)

105.64'

Q PAVEMENT

FD SHI  
W/S

S.R. 412

Record: 09-09-1982

P.I. Δ Rt

Iron Rod 3' +/- LT of  
LT E/P set by splitting  
pav't back & using  
control point ahead -  
0.1 Mi. E of CR # 306

O.D.O.T. DISTRICT 2 SURVEY OFFICE

PERSONNEL

REFERENCE NO. 26-D

SHEET 11 OF 16

NOTES CHENEY

H.C. RIPPLE

R.C. BARBOUR

GEYMAN

DATE 4-29-1993

WEATHER PARTLY SUNNY

TEMP. 60°

ROUTE #412

COUNTY SANDUSKY

TOWNSHIP TOWNSEND

SECTION 23

T5N R17E

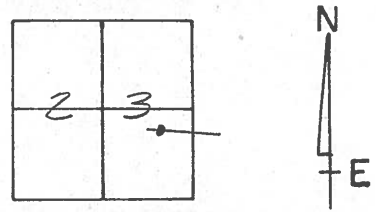
TYPE MONUMENT 1" IRON ROD

~~ON~~ SURFACE - BELOW 0.5'

LEFT-CL PAV'T. - RIGHT 13' ±

2.5' ± RT. TO RT. EDGE PAVEMENT

S.L.M. 614+48



RECORDED: 9-9-1982

P.I. Δ Rt.

1. ROD 3' ± LT. LT. E/P -

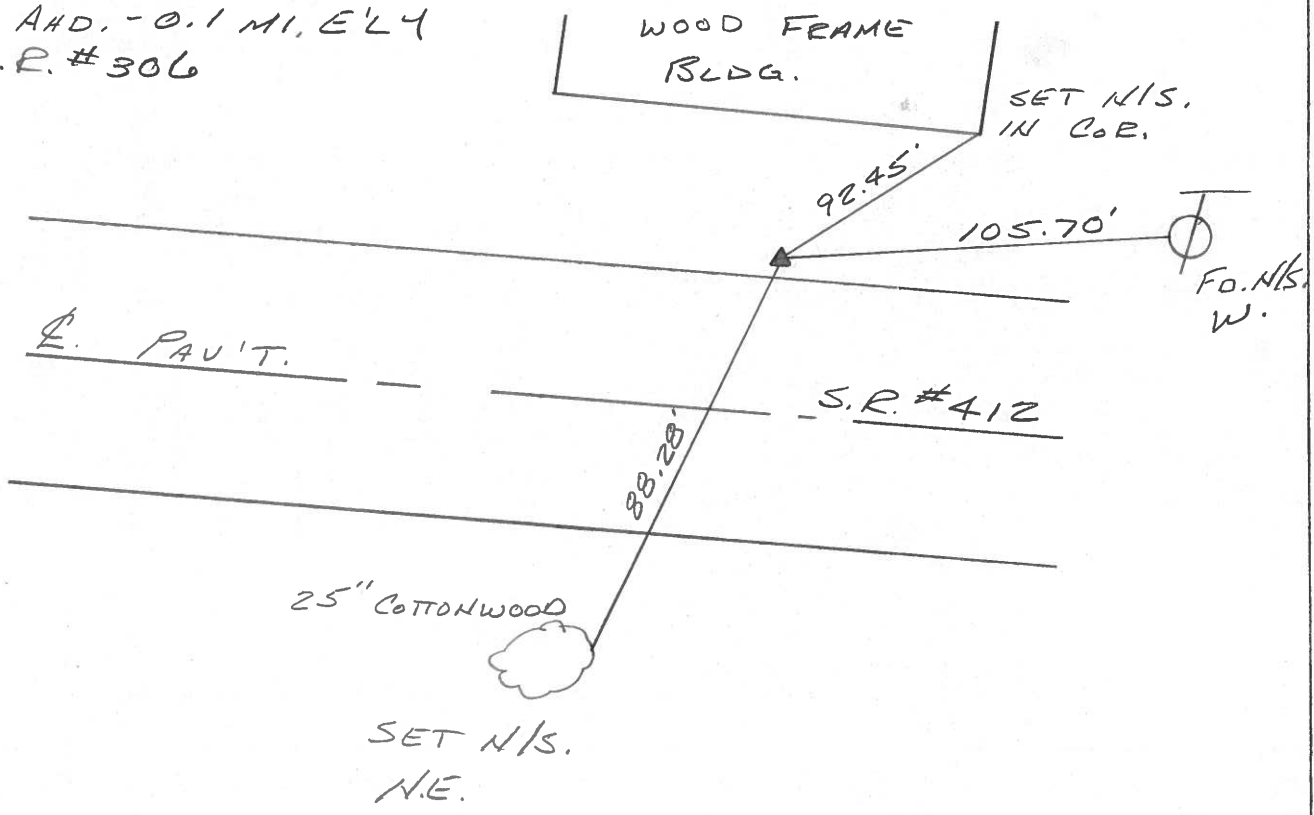
SET BY SPLITTING PAV'T.

BACK & USING CONTROL

POINT AHD. - 0.1 MI. E'LY

OF C.P. #306

PAINTED ARROW ON PAV'T  
7-22-1993  
RCC



County Sandusky S.R. 412

Date 9/9/82 Drawn 9/16/82

Township Townsend

Weather sunny

Section 23

Temp. 64°

T5N, R12E

Personnel Cronin

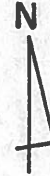
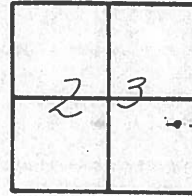
Ripple

Geyman

Mosser

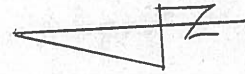
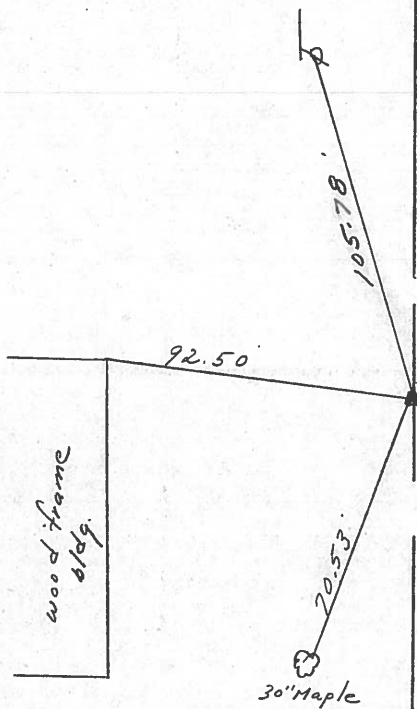
Barbour

#26-D



P.I. A Rt.

I. Rod 3 1/2 LF. LF. E.P. - set  
by splitting pavement back  
using control points and  
0.1 M. Ely. of C.R. #306



S.R/W.?? S.R. #412

PERSONNEL	TITLE	PERSONNEL	TITLE	COUNTY	DATE
Cronin		Schneider		Sandusky	4/30/75
Ash		Mosser		S. R. # 412	WEATHER sunny
Ripple		Barbour		SEC.	TEMP. 55°
Geyman					

DESCRIPTION Ties for Control Points JOB NO. \_\_\_\_\_

