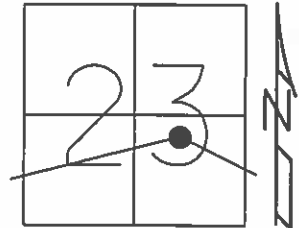


O.D.O.T. DISTRICT 2 SURVEY OFFICE (USE ONLY)

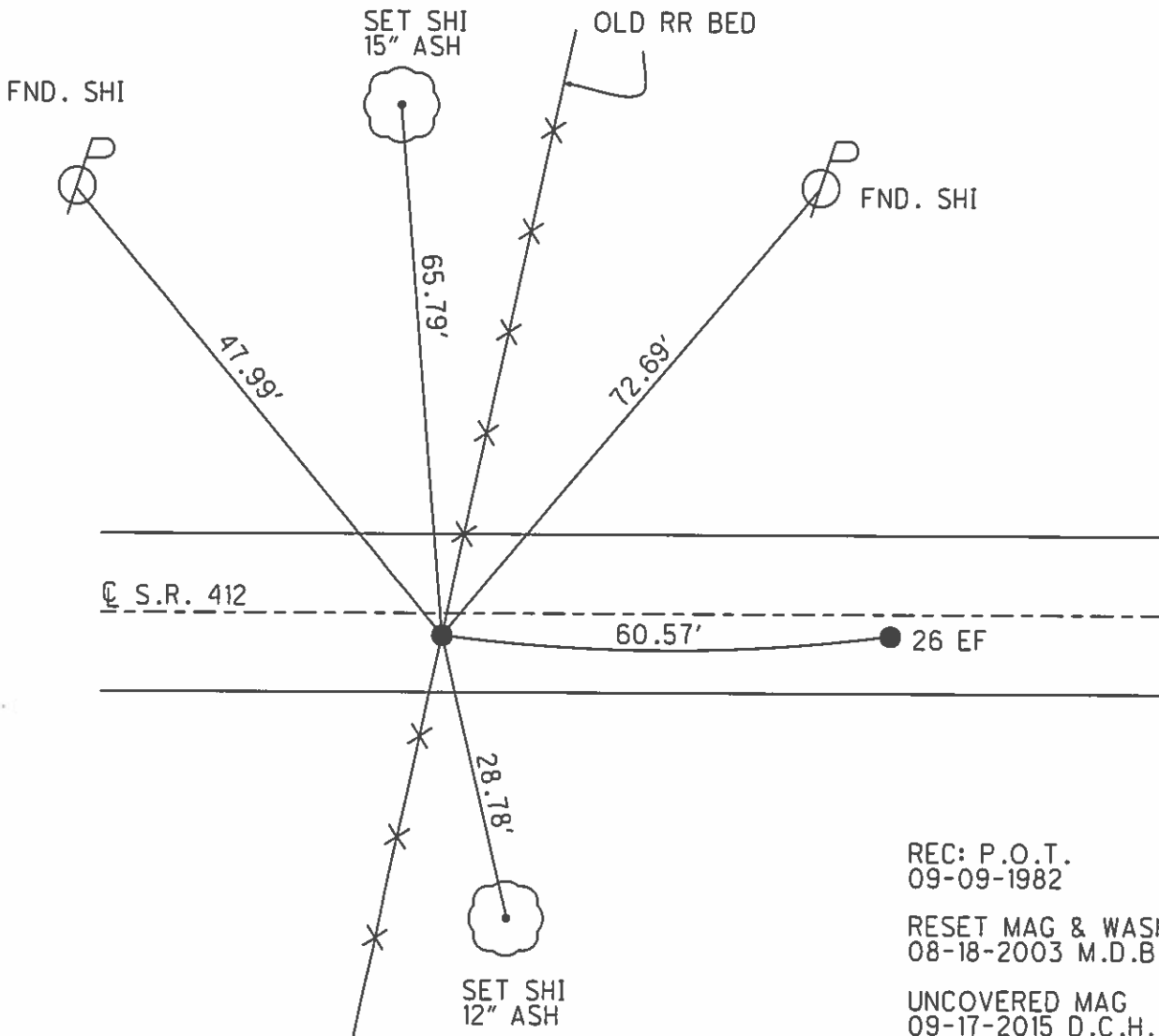
PERSONNEL \_\_\_\_\_ REFERENCE NO. 26 E SHEET 27 OF 34

NOTES HOMAN DATE 06-26-2015 ROUTE SR 412  
 H.C. HOMAN WEATHER CLOUDY COUNTY SANDUSKY  
 R.C. LEU TEMP. 70°F TOWNSHIP TOWNSEND  
 SECTION 23  
T 5 N R 17 E

TYPE MONUMENT MAG & WASHER  
 ON SURFACE - ~~BELOW~~ ON  
~~LEFT~~ - CL PAV'T - RIGHT 3.8'  
6' TO RT EDGE PAVEMENT  
 S.L.M. 618+37



Grid: Northing: 623437.164 Easting: 1869808.013



REC: P.O.T.  
 09-09-1982  
 RESET MAG & WASHER  
 08-18-2003 M.D.B.  
 UNCOVERED MAG  
 09-17-2015 D.C.H.

O.D.O.T. DISTRICT 2 SURVEY OFFICE

PERSONNEL

REFERENCE NO. 26-E

SHEET 12 OF 16

NOTES Brumbaugh

DATE 04-02-03

ROUTE S.R. 412

H.C. Barnhisel

WEATHER SUNNY

COUNTY SANDUSKY

R.C. Glass

TEMP. +60°

TOWNSHIP TOWNSEND

SECTION 23

T 5 N R 17 E

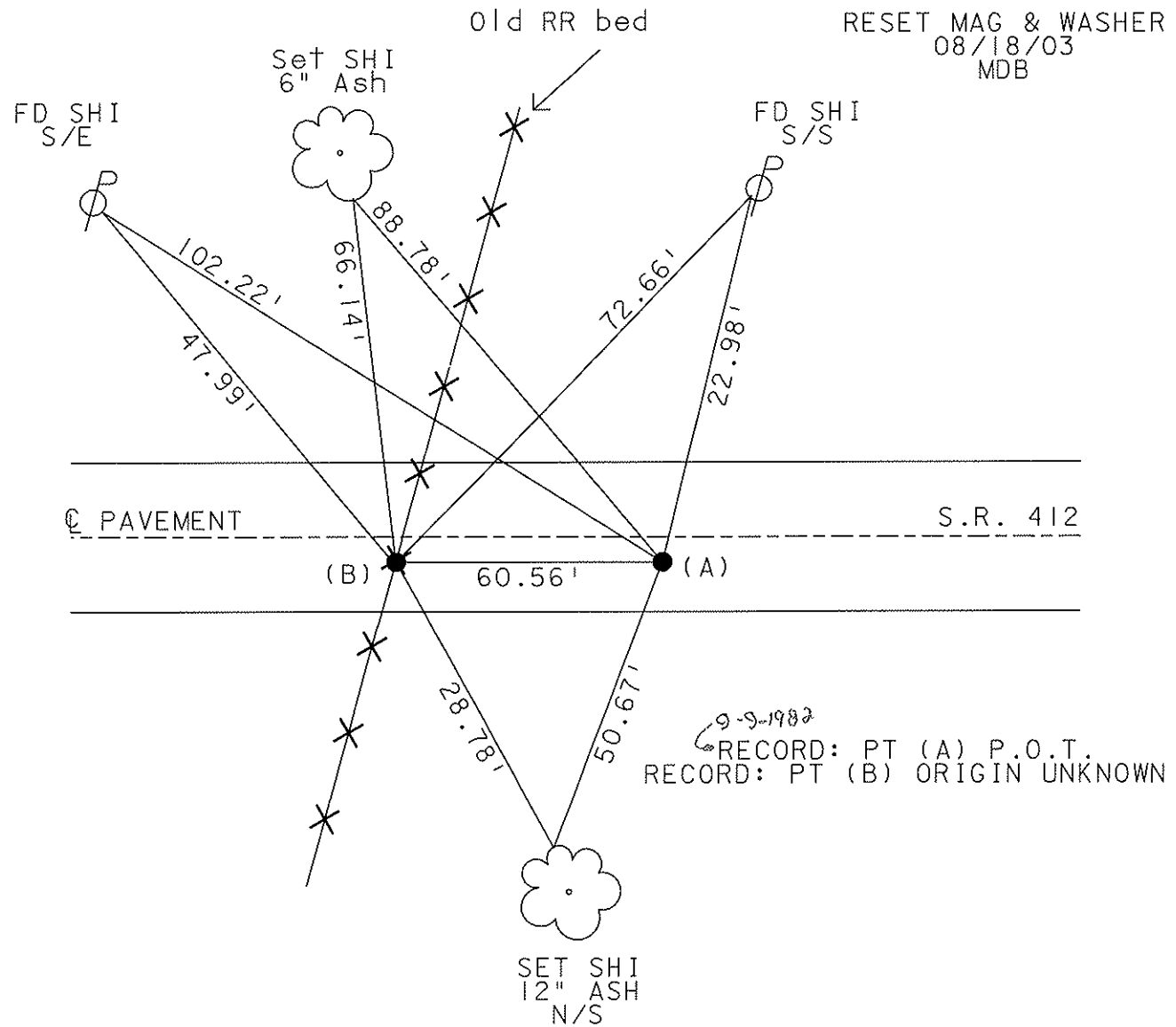
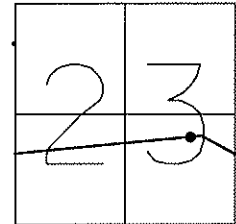
TYPE MONUMENT BOTH POINTS PK & WASHER

ON SURFACE - BELOW (B) 2" DOWN PT (A) SUR

~~LEFT~~ - Q PAV'T - RIGHT 3.8'

6' TO RT EDGE PAVEMENT

S.L.M. 618+37



O.D.O.T. DISTRICT 2 SURVEY OFFICE

PERSONNEL

REFERENCE NO. 26-E

SHEET 12 OF 16

NOTES CHENEY

H.C. RIPPLE

R.C. BARBOUR

GEYMAN

DATE 4-29-1993

WEATHER PARTLY SUNNY

TEMP. 60°

ROUTE #412

COUNTY SANDUSKY

TOWNSHIP TOWNSEND

SECTION 23

T5N R17E

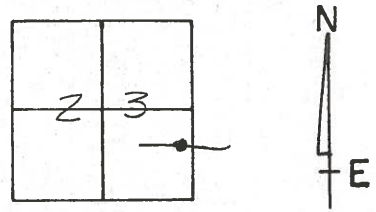
TYPE MONUMENT <sup>"A"</sup> PK/WASHER

ON SURFACE - ~~BELOW~~ ON

~~LEFT~~ - RIGHT 4'±

6'± TO RT EDGE PAVEMENT

S.L.M. 618+37



RECORD: 9-9-1982

P.O.T. 0.2 MI. E'LY C.R. #300

SET PK/WASHER ATOP RR.

SPK. (SET IN PLACE OF  
A MASON NAIL - FOUND)

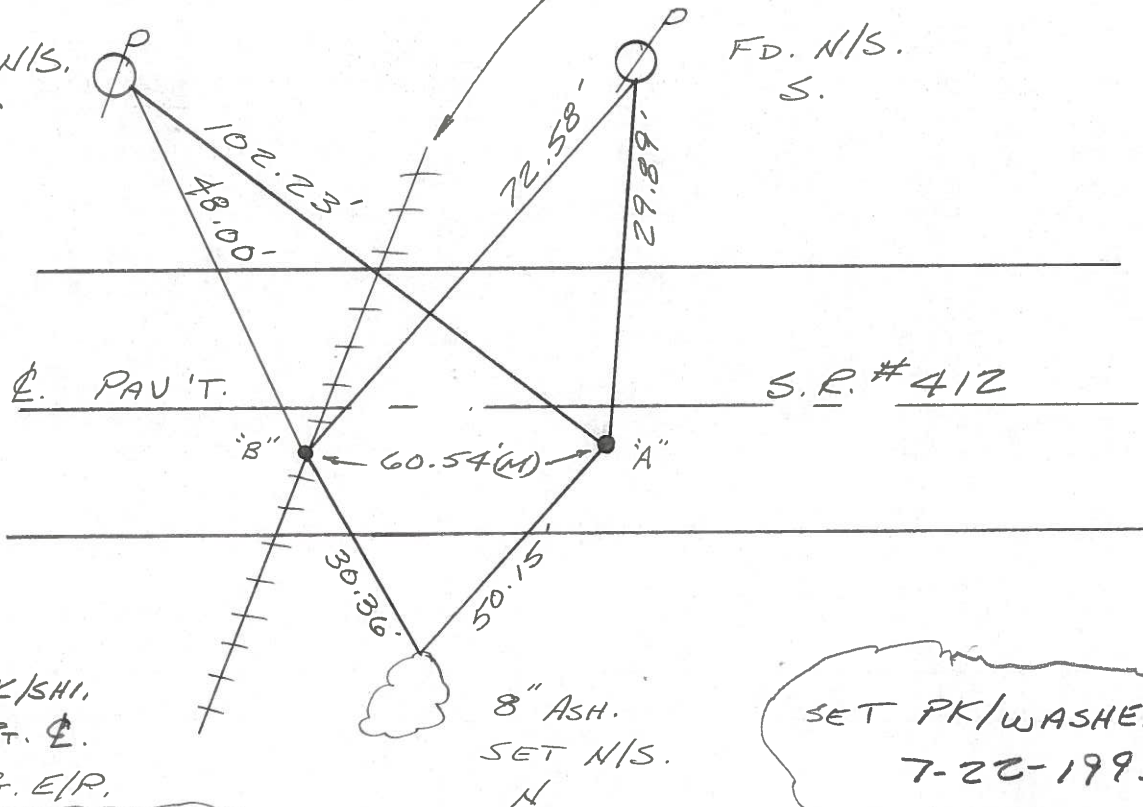
3.5' RT. & PAU'T.

**26E**

OLD R.R.  
BED

SET N/S.  
S.E.

FD. N/S.  
S.



<sup>"B"</sup>  
FD. PK/SHI,  
4'± RT. &  
6'± RT. E/P.

8" ASH.  
SET N/S.  
H

SET PK/WASHERS  
7-22-1993  
FCC

ORIGIN UNKNOWN

11

Q.D.O.T. DISTRICT 2 SURVEY OFFICE

Sht.      of     

County Sandusky S.R. 412

Date 9/9/82 Drawn 9/16/82

Township Townsend

Weather sunny

Section 23

Temp. 64°

T<sup>S</sup>N, R<sup>12</sup>E

Personnel Cronin

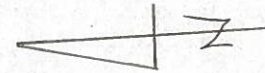
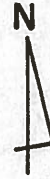
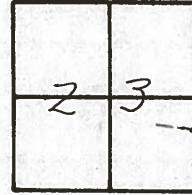
Ripple

Geyman

Mosser

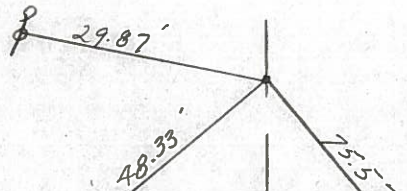
Barbour

#26-E



P.O.T

0.2 M. Ely C.R. #300. Set P.K  
& washer atop R.R. spike that  
was set in place of a mason  
nail found 3.5' Rt. & P.V.T



ctr. N.E. bolt  
 conc. base for  
 old R.R. Xing  
 sign

face N.E. bolt  
 conc. base. old  
 R.R. Xing sign

& R/W ?? S.R. #412

PERSONNEL	TITLE	PERSONNEL	TITLE
Cronin		Schneider	
Ash		Mosser	
Ripple		Barbour	
Geyman			

COUNTY Sandusky DATE 4/30/75  
 S. R. # 412 WEATHER sunny  
 SEC. \_\_\_\_\_ TEMP. 55°

DESCRIPTION Ties for Control Points JOB NO. \_\_\_\_\_

