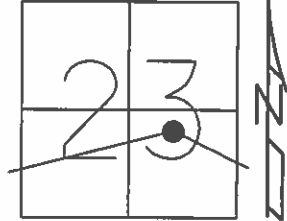


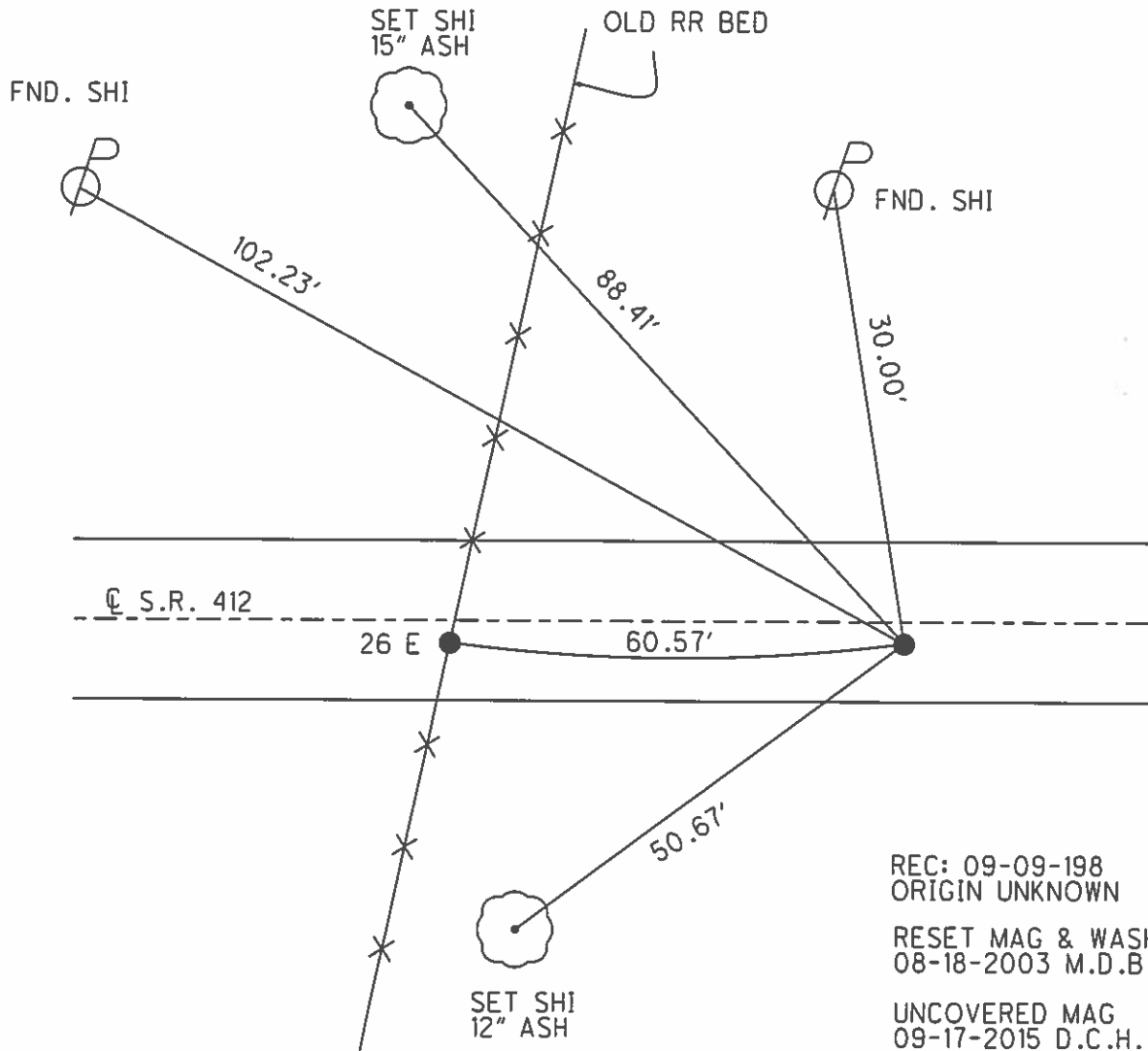
O.D.O.T. DISTRICT 2 SURVEY OFFICE (USE ONLY)

PERSONNEL _____ REFERENCE NO. 26 EF SHEET 28 OF 34
 NOTES HOMAN DATE 06-26-2015 ROUTE SR 412
 H.C. HOMAN WEATHER CLOUDY COUNTY SANDUSKY
 R.C. LEU TEMP. 70°F TOWNSHIP TOWNSEND
 _____ SECTION 23
 _____ T 5 N R 17 E

TYPE MONUMENT MAG & WASHER
 ON SURFACE - ~~BELOW~~ ON _____
~~LEFT~~ - CL PAV'T - RIGHT 3.8'
6' TO RT EDGE PAVEMENT
 S.L.M. 618+97.57



Grid: Northing: 623401.539 Easting: 1869856.941



REC: 09-09-198
 ORIGIN UNKNOWN
 RESET MAG & WASHER
 08-18-2003 M.D.B.
 UNCOVERED MAG
 09-17-2015 D.C.H.

O.D.O.T. DISTRICT 2 SURVEY OFFICE

PERSONNEL

REFERENCE NO. 26-E

SHEET 12 OF 16

NOTES CHENEY

H.C. RIPPLE

R.C. BARBOUR

GEYMAN

DATE 4-29-1993

WEATHER PARTLY SUNNY

TEMP. 60°

ROUTE #412

COUNTY SANDUSKY

TOWNSHIP TOWNSEND

SECTION 23

T5N R17E

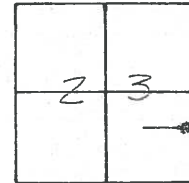
TYPE MONUMENT ^{"A"} PK/WASHER

ON SURFACE - ~~BELOW~~ ON

~~LEFT~~ - RT PAV'T. - RIGHT 4±

6± TO RT EDGE PAVEMENT

S.L.M. 618+37



RECORD: 9-9-1982

P.O.T. 0.2 MI. E'LY C.R. #306

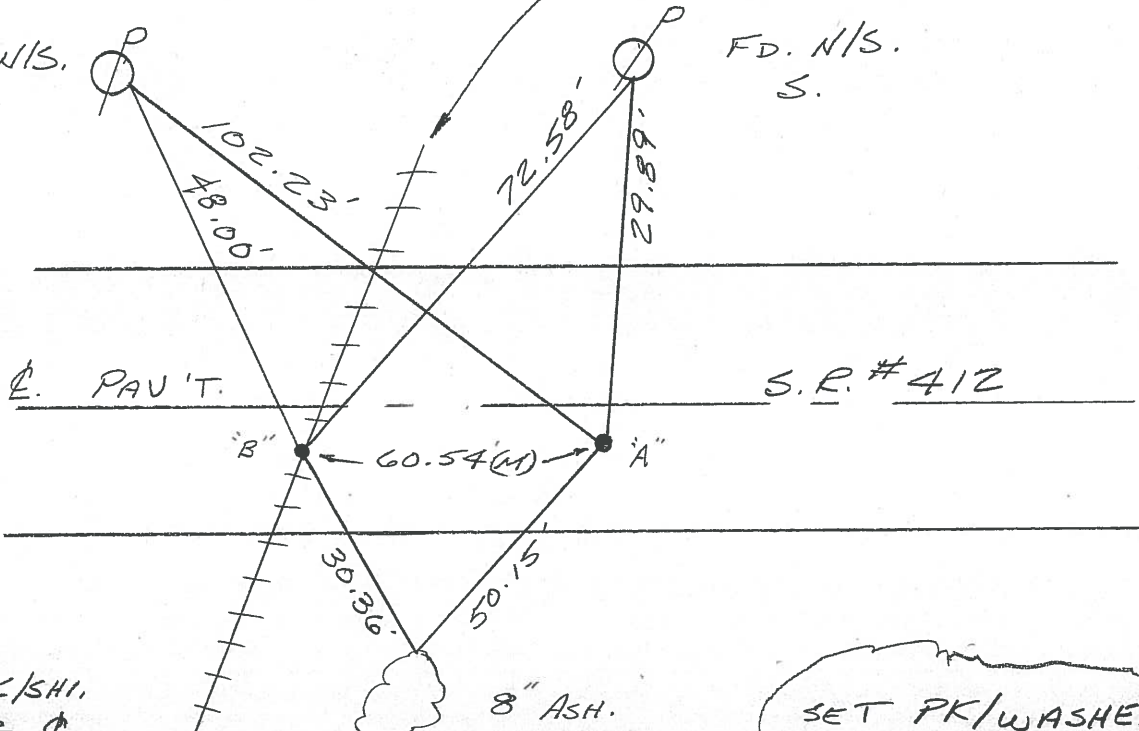
SET PK/WASHER ATOP RR.

SPK. (SET IN PLACE OF A MASON NAIL - FOUND)

3.5' RT. E. PAV'T.

26EF

SET N/S. S.E.



^{"B"}
FD. PK/SHI.
4± RT. E.
6± RT. E/P.

ORIGIN UNKNOWN

8" ASH.
SET N/S.
H

SET PK/WASHERS
7-22-1993
RCC